

CHARTING THE COURSE:
INSTITUTIONAL CHARACTERISTICS AND THEIR
ROLE IN PREDICTING PRIMARY MODALITY
ENROLLMENT AT SELECT COMMUNITY
COLLEGES



UNIVERSITY OF
WEST GEORGIA

Rebecca A. Free

Purpose

Research Question

Empirically explore the predictive relationship between institutional characteristics and modality enrollment to address gaps.

Strategically review and leverage institutional data for enrollment health.

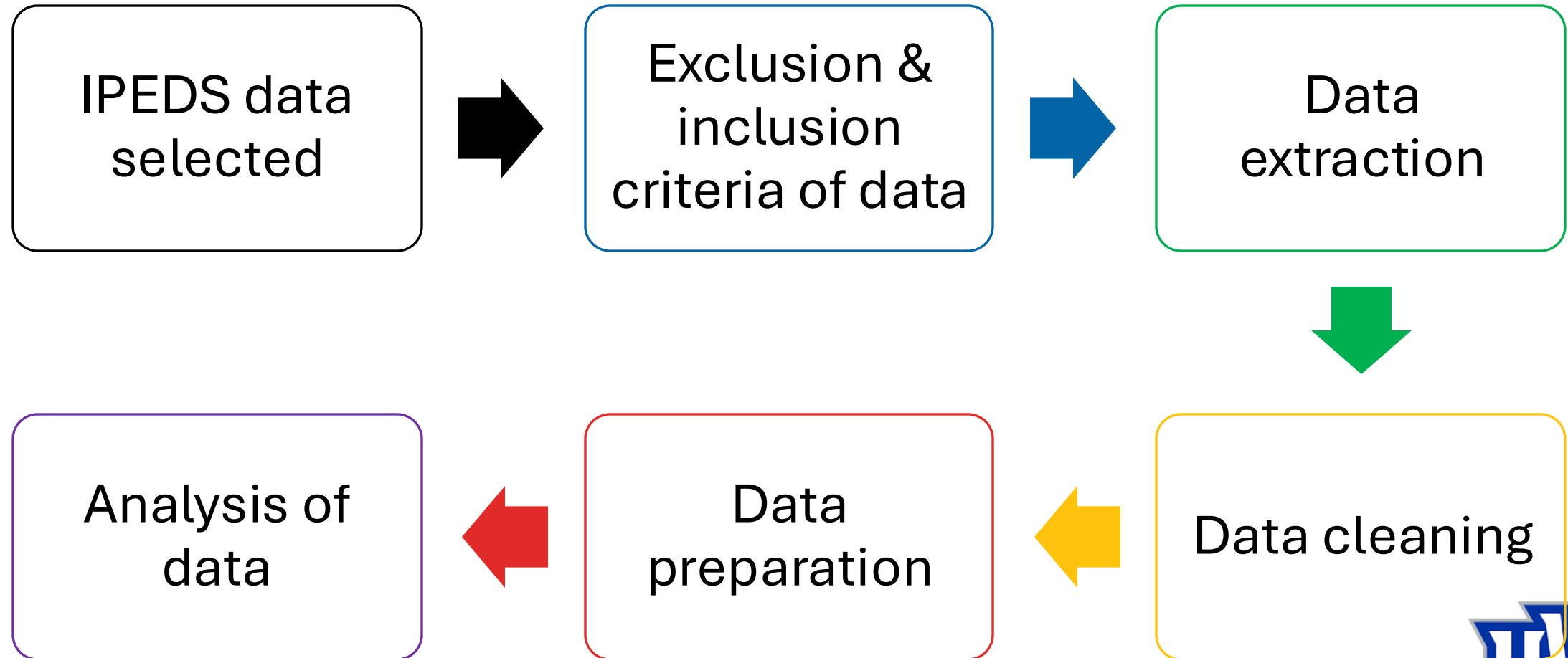
Can institutional control, locale, and size effectively anticipate the primary modality—primarily distance education, primarily mixed education, or primarily face-to-face education—that community colleges enroll students in?

Majority of current research focuses on 4-year institutions

Previous research is outdated and lacks robust findings



PROCEDURE



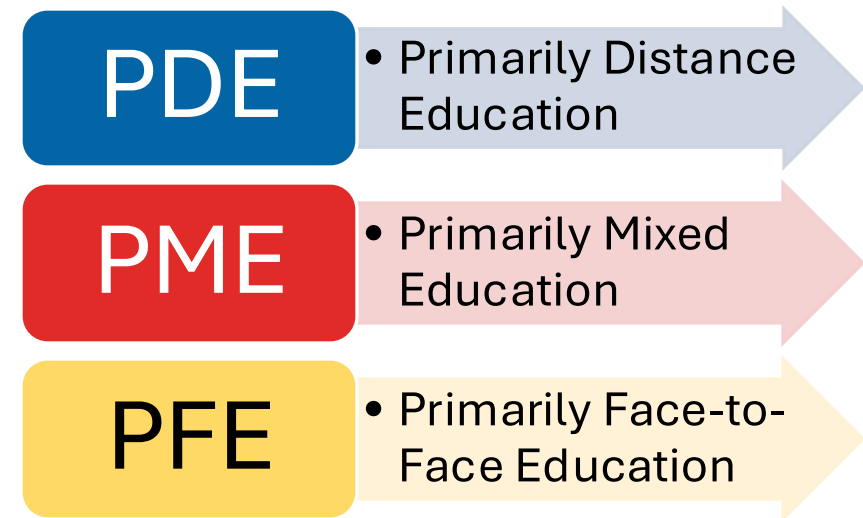
RESEARCH ANALYSIS

- Multinomial logistic regression (MLNR) at $p < .05$
 - IV_1 : Institutional Control
 - IV_2 : Institutional Locale
 - IV_3 : Institutional Size
 - DV: primary modality enrollment represents the predominant mode of instruction at the institution.
 - Primarily Distance Education (PDE)
 - Primarily Mixed Education (PME)
 - Primarily Face-to-face Education (PFE)
- Final N = 324

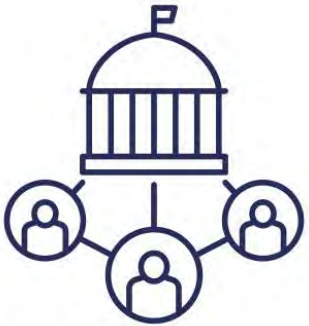


FINDINGS

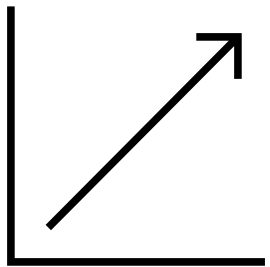
- The MNL analysis was statistically significant, whereby Institutional control, locale, and size are significant predictors of primary modality enrollment at community colleges.
- In the absence of predictive variables: PFE > PDE > PME
- Overall model only made **68.2%** of correct predictions:
 - PDE (90.0%)
 - PFE (57.4%)
 - PME (52.9%)



SPECIFIC FOCUS: INSTITUTIONAL CONTROL & SIZE



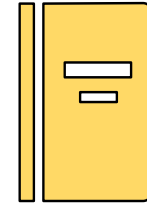
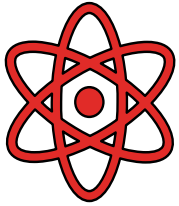
- Private NFP institutions: more likely to offer PDE than PME
 - Findings **do not** align with previous research (e.g., Pontes & Pontes, 2013)



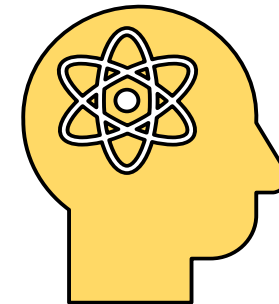
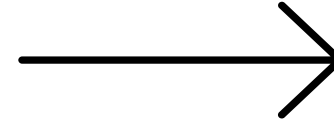
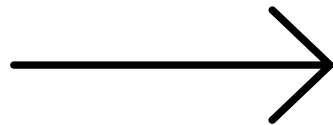
- Small community colleges (those with under 1,000 students): more likely to offer PME over PDE
 - No previous research exists as most focuses on other outcomes.
- Growth in community colleges may influence primary modality enrollment



CONCLUSION



- This quantitative study significantly contributes to literature and closes gaps.
- This study provides community college leaders with valuable knowledge to leverage data.



QUESTIONS?



UNIVERSITY OF
WEST GEORGIA

Thank You!