

UNIVERSITY of 
West Georgia®



2011 - 2012 FACT BOOK



2011-2012

University of West Georgia

Fact Book



Department of Institutional Research and Planning
Carrollton, GA 30118
678-839-6449

Office of the President

Dear Students, Faculty and Staff Colleagues, Alumni, and Friends of the University:



We refer to the University of West Georgia as a land of opportunity, for a number of reasons.

First, our land literally presents us with a great deal of opportunities, as evidenced by the growth of our campus. We have recently begun construction on a state-of-the-art nursing education building, we have completed a visual arts building, and we've erected the largest residential facility to date on campus, Center Pointe Suites.

We've also opened a new bookstore and completed a major renovation of Ingram Library that includes a replica of the office of the late Thomas B. Murphy, longtime speaker of the Georgia House of Representatives.

UWG also is a land of opportunity because of its outstanding academics.

It's rare to find an institution that provides as many opportunities for undergraduate research as UWG does. The national success of our students in undergraduate research competitions continues to be outstanding. The 106 programs of study offer students a choice of majors and degrees that can fit their skills and ambitions.

Our enrollment has grown, recently reaching a record of more than 11,600, including more than 10,000 undergraduates, also a record. But our class sizes remain ideal for learning life lessons. We are large enough to expose students to a variety of diverse opinions and opportunities, yet small enough to let each student find a niche that enables success.

Our land of opportunity also presents a vibrant campus life for students, faculty, staff and the community. The university and the local area benefit from the cultural enrichment, educational opportunities and entertainment that have become a regular part of the scene at UWG. Whether you're taking in an international festival, a lecture by a renowned expert, a concert by a dynamic musical act or an exciting sporting event, UWG provides a fantastic venue.

Meanwhile, this land of opportunity continues to produce students, faculty and staff who prove that amazing things happen when you Go West.

UWG placed highly in a national ranking of online learning programs, WebMBA programs and online graduate nursing education programs compiled by U.S. News and World Report. UWG's debate teams won one national competition and finished near the top of the pack in another, continuing a tradition of success. The campus of UWG earned a Tree Campus USA designation, recognizing our environmental stewardship.

And the Princeton Review once again recognized UWG as a Best Southeastern College and named the Richards College of Business to its 300 Best Business Schools list. Both national recognitions are based on a survey regarding the college's academic programs and student satisfaction, as well as the university's student body and campus life.

At the University of West Georgia, we are blazing trails to new possibilities for scholarly achievement, creative expression, and service to humanity. Go West!

Onward and Upward, West Georgia!

Sincerely,

A handwritten signature in black ink, appearing to read "Beheruz N. Sethna".

Beheruz N. Sethna, Ph.D.
Professor of Business Administration, and
President of the University

University of West Georgia Fact Book

Table of Contents

The University

History of the University	2
Campus Description	2
Map of Campus	4
Mission Statement	5
Vision Statement	6
The Strategic Plan	7
The Four Guiding Principles	7
Accreditations and Affiliations	8
The Honors College	9
Student Programs and Services	9
Intercollegiate Athletics	12

The Administration

Administrative Organization	14
University System of Georgia Strategic Plan	14
University System of Georgia Institutions	15
University System of Georgia Board of Regents	15
University System of Georgia Administrative Personnel	16
University of West Georgia Administration	17
Departments of Instruction and Chairpersons	17
University of West Georgia Organization Charts	18

Enrollment and Credit Hour Production

Detailed Composition of UWG Student Body	22
Geographic Origin of Students by Classification	23
Geographic Origin of Students	24
Admissions Data	26
SAT Scores of Entering Freshmen	27
Total FTE Students	28
Total Enrollment and Student Credit Hour by Level	29
Credit Hour History by College	30
Distance and Distributed Education Center	37
History of Continuing Education Programs	38
Off Campus Programs	39
Retention Rates of Fall First-Time Full-Time Freshman Students	39
Student Financial Aid	40
Student Financial Aid Growth	42

Degrees

Degrees and Majors Offered	44
Degrees Conferred	46

Faculty

Faculty Profile	52
Composition of Faculty	53
Faculty Profile by College	54
Average Salary by Employee Category	61

Sponsored Research

Office of Research and Sponsored Projects	64
Fiscal Year(s) Assessment	65
Faculty Research Grants	66

Financial Information

Budgeting and Assessment Cycle	70
University Revenue by Source	71
University Operating Expenses	72
Distribution of the Student Dollar	75
Statement of Net Assets	76

West Georgia Foundation, Development and Alumni Relations

University of West Georgia Foundation	78
Foundation Officers and Trustees	79
Annual Fund Drive Results	80
Scholarships	81
West Georgia Alumni Association	87
Geographical Distribution of Alumni State of Georgia	88
Geographical Distribution of Alumni United States	89

Campus Planning and Facilities

Campus Planning and Facilities	92
Land Holdings	92
Campus Facilities	93

Information Resources and Technology

Irvine Sullivan Ingram Library	98
Library Acquisitions	100
Information Technology Services	101

Institutional Research and Planning

Mission	104
History	104
Goals	104
Major Projects	105
Completed Requests	105
IRP Website	106



The University



The University

<http://www.westga.edu/>

History

The University of West Georgia, a four-year institution of the University System of Georgia, is a co-educational, residential, liberal arts institution located in Carrollton, Georgia.

Carrollton, the seat of Carroll County, is about an hour drive from Atlanta. According to the 2010 Census estimate, Carroll County has a population of 110,527 with retail shopping, medical, educational, entertainment, financial, and recreational services, making it one of Georgia's fastest growing industrial areas.

The University of West Georgia was established in 1906 as the Fourth District Agricultural and Mechanical School, one of twelve such institutions by the State of Georgia between 1906 and 1917. Twenty five years later, an Act by the Board of Regents of the University System of Georgia changed Carrollton A&M School to West Georgia College, a junior college. Dr. Irvine S. Ingram, principal of the A&M School, was named the institution's first president. In 1939, the Board of Regents authorized the College to add a three-year program in elementary education.

In 1957, the institution was authorized to confer the B.S. degree in education, making it a four-year college within the University System of Georgia. Two years later, West Georgia College added the Bachelor of Arts degree in English, history, and mathematics.

During the following years, West Georgia College became one of the fastest growing institutions of higher learning in the South. From an enrollment of 576 in 1957, the institution's student body reached a milestone of 11,646 in fall 2011. West Georgia offers twelve undergraduate degrees with majors in 49 different fields.

In 1967, the Board of Regents authorized the establishment of a graduate program at the master's level. Currently, the degrees offered are bachelors, masters, doctorates, post-baccalaureates, post-masters, and education specialists.

In 1983, the Board of Regents approved the External Degree Program as a cooperative effort between Dalton College and West Georgia. The Board of Regents in 1988 approved opening the Newnan Center, a joint effort of the Newnan-Coweta Chamber of Commerce and other businesses, civic and educational leaders in the area. With an enrollment of 399 in fall 2011, the Newnan Center provides access to higher education for residents of Coweta County.

In June 1996, the Board of Regents of the University System of Georgia officially changed the name of West Georgia College to the State University of West Georgia and to the University of West Georgia in 2005.

The Campus

The campus is a unique blend of old and new. Boasting numerous cultivar of trees, shrubs, and flowers, the campus is dotted with structures of the early 1900s, as well as buildings exemplifying the most contemporary modes of architecture.

West Georgia began as an A&M school in 1906 on the three-block-long expanse shaded by old oak, elm, and maple trees that surrounds a number of brick buildings and stretches into a semi-circle on front, or "Old Campus."

A modern academic complex composed of a library, social science, humanities, and math-physics buildings lies beyond the "Old Campus." A business school annex was added in 1985. Other buildings in the area include a three-story student center, a three-story campus center, and a health services building. A performing arts center, containing two theatres, a black box and a main stage, which seat 250 and 455 respectively was completed in 1989.



The focal point of the University's core curriculum classes is situated across from the Performing Arts Center—the Technology-enhanced Learning Center (TLC). The \$20 million, 110,000-square-foot, three-story, state-of-the-art building was completed in the summer of 2001. Academic departments housed in the TLC include Computer Science, English, Chemistry, and History. The defining feature of the TLC is the “smart” classrooms, or studio classrooms, in which every student has a computer at his or her desk. Other features include three lecture halls, a seminar room for each department, one general-purpose computer lab, and several chemistry labs, in addition to faculty offices. In the lecture halls, students have a place to plug in their laptops, and in the lobby area, computer screens offer students a chance for a quick revision of their assignments between classes. Labs and lectures are integrated, and experiments are done on computers. The University believes that this high-tech teaching method increases student learning and is proud to be one of only three institutions in the University System of Georgia to use this technology.

Much of the University's other recent physical development occurred on the Westside of campus. The Education Center, a structure unique in the University System, contains five large lecture-demonstration rooms, which by moving the sliding partitions serve as a 1,000-seat auditorium. It also features an instructional materials center, television and sound recording studios, an audiovisual laboratory and dark room, counseling rooms, group observation rooms, study carrels, and other areas for independent study.

Adjacent to the Education Center is the Biology Building, a facility with numerous laboratories, lecture halls, and the latest scientific equipment. The Education Annex, a 42,000-square-foot facility, opened in 1995. This facility houses education and nursing faculty offices, classrooms, laboratories, and the campus day-care center.

A complete renovation of the University's baseball complex was made possible by a gift from the E. Woodfin Murphy family in Carrollton. The 20,000-square-foot, two-level Murphy Field house provides offices for all athletic personnel, a football locker room, academic support area, sports information offices, a sports medicine area, and meeting rooms.

In fall 2009, the University of West Georgia opened a 262-bed Greek Village. The Village includes a community building, outdoor basketball and volleyball court, outdoor green space, parking, and half a dozen six-bed townhouses. Each house has a living/chapter room, kitchen, laundry facilities, single and double bedrooms, and semi-private bathrooms. The university now has 3,045 beds available to the students.

The Coliseum opened January 2009; a 6,500 capacity facility is the home for UWG Wolves basketball and volleyball programs and the Department of Health, Physical Education and Sports Studies. Its schedule includes athletic and community events, classes, concerts, corporate meetings, local high school graduations, and UWG orientations.

In September 2009, West Georgia Wolves opened its 9,000-seat football stadium. The facility, located on approximately 250 acres, will be completed in stages to include locker rooms, weight and training rooms, several athletic programs, and offices for the Athletics Department.

Kennedy Interfaith Chapel and Bonner House are two of the oldest buildings on campus. The Chapel was owned first by the Episcopal Church and later by the Catholic Church. When the local parish built a new church, its members donated the Chapel to the University for non-denominational use. In 1964, after the Chapel was moved to the campus, the late Robert F. Kennedy dedicated it to the memory of his brother, the late President John F. Kennedy.

The Bonner House, constructed in 1843 as a plantation home, is the oldest building on campus. The frame colonial structure has served various purposes through the years.

Source: Institutional Research and Planning



Campus Map



Mission of the University of West Georgia

The University of West Georgia seeks to achieve preeminence in providing educational excellence in a personal environment through an intellectually stimulating and supportive community for its students, faculty, and staff.

Purpose

The University, a charter member of the University System of Georgia, is a comprehensive, residential institution providing selectively focused undergraduate and graduate public higher education primarily to the people of West Georgia. The University is also committed to regional outreach through a collaborative network of external degree centers, course offerings at off-campus sites and an extensive program of continuing education for personal and professional development. Opportunities for intellectual and personal development are provided through quality teaching, scholarly inquiry, creative endeavor, and service for the public good.

Essential Activities

West Georgia educates students in a range of disciplinary, interdisciplinary, and professional programs at the baccalaureate level. It also offers a significant number of graduate programs at the master's and educational specialist's levels. The University has a commitment to education at the doctoral level in the field of education as well as other selected areas. In addition to being accredited as an institute of higher education, the University maintains national accreditation or recognition in most undergraduate and graduate fields of specialization.

The University of West Georgia pursues its purpose through the following activities:

- Instruction in general education and the promotion of life-long learning that together lay the foundations of what is essential to being an educated person.
- Faculty-directed student research and professional activities that complement classroom learning through learning by doing and reflection on doing.
- Faculty research, scholarship, and creative endeavors that promote knowledge, enhance professional development, contribute to quality instruction, and provide for significant student involvement and field-based experience.
- Educational opportunities such as the Honors College and, for extraordinary high school-aged students, the Advanced Academy of Georgia that serve the needs of exceptionally prepared students.
- A broad range of public service activities and proactive partnerships that: promote more effective utilization of human and natural resources; contribute to economic, social and technical development; and enhance the quality of life within the University's scope of influence.
- Student services, including outstanding first-year experiences, which increase opportunities for academic success and personal development and enhance the climate of campus life.

Values

The University of West Georgia values the following:

- High-quality general education, undergraduate and graduate programs, that:
 - 1) Are grounded in a strong liberal arts curriculum;
 - 2) Impart broad knowledge and foster critical understanding needed for intellectual growth, personal and social responsibility, cultural and global literacy and lifelong learning;
 - 3) Emphasize disciplinary rigor;
 - 4) Foster the development of effectiveness in communication critical and independent thinking, problem solving, and the use of information resources and technology; and
 - 5) Create a learning community dedicated to instructional excellence where close student-faculty interaction enhances both teaching and learning for a diverse and academically well-prepared student body.
- Cultivate of a personal environment.
- Affirmation of the equal dignity of each person by valuing cultural, ethnic, racial, and gender diversity in students, faculty, and staff.
- Practices that embody the ideals of an open democratic society and that cultivate an environment of collegiality.

These commitments culminate in educational experiences that foster the development of thoughtful and productive leaders and citizens who make a positive impact throughout an increasingly global society.

Vision Statement for the University of West Georgia Year 2000 and Beyond

The University of West Georgia will be a leader within the University System of Georgia in providing educational excellence in a personal environment.

The University of West Georgia will seek to create for students from various backgrounds every possible avenue to intellectual achievement, personal development, and leadership potential without compromising academic excellence. The University will maintain close contact with all people of the region, be responsive to their needs while raising their aspirations, and generating a more highly educated populace.

The University of West Georgia will be recognized for excellence in teaching and learning, research, and public service in undergraduate, graduate, and continuing education. The University will be recognized as being fundamental to the educational, social, cultural, technological, and economic advancement of the region and state.

Specifically, the University of West Georgia will be characterized by:

- Educational Excellence evidenced by outstanding educational experiences, national and regional recognition of selected programs, faculty who excel in their disciplines, superior staff support, and an increasingly capable student body. At West Georgia, teaching, research, and service will be intricately intertwined and supportive of each other.
- A Safe, Supportive Community committed to enhancing learning, through close contracts between students and faculty, small classes taught by senior faculty whenever possible and through dedicated staff who help provide a vibrant campus life.
- An Outstanding, Diverse Faculty and Staff who demonstrate effective communication and teaching skills; utilize new technologies and innovative strategies to enhance student learning; and exhibit the highest standards of intellectual achievement, research, and continuing growth.
- Educational Opportunities for a Wide Range of Academically-Prepared Students that include a strong academic knowledge base for the development of leadership skills and life-long learning. The University of West Georgia will help ensure its students future success by developing the ability of individuals to access, interpret, analyze using current technology and make use of relevant facts, information, and knowledge to think critically, solve problems, work with, and communicate effectively with other. West Georgia will develop the whole individual so that as alumni they will continue to be contributing members of their families, institutions, communities, state, nation, and world.
- Educational Opportunities for Exceptional Students: West Georgia will build a reputation for having an Honors College with a distinctive liberal arts curriculum and additional peaks of excellence in selected undergraduate and graduate majors and professional programs, with student involvement in faculty research, and themes that run across the curriculum, such as communication, leadership development, interdisciplinary studies, critical thinking, and problem solving.
- A Region-Wide Learning Community that Engages and Inspires Traditional and Non-Traditional Students to become educated persons with global and multi-cultural perspectives and advanced technological knowledge. The University will help develop both ethical principles and intellectual flexibility for the future and will celebrate and energize the human spirit through respecting and supporting individual differences in learning styles, identities, and personal/professional goals.
- Pro-active Partnerships with Public and Private Schools and Other Educational Institutions, Business, Industry, Government, and Cultural and Social Organizations in order to analyze, synthesize, evaluate, predict, and respond to changing state and regional needs, to support Georgia's educational, economic, and cultural development, and to ensure graduates' readiness for the present and future.
- A Unified, Clearly Focused, University with each part contributing to and understanding how every other part contributes to the mission of the University and to the larger society.

The Strategic Plan, 2010 - 2015

UWG's Four Strategic Guiding Principles

1. Academic Programs Balancing Liberal Arts with Professional Preparation
2. A Campus that is Safe, Engaging, and Exciting
3. Steady and Intelligent Enrollment and Resource Growth
4. Meaningful Engagement with Off-campus Communities

The Strategic Plan is designed to shape the University of West Georgia for the next five years in such a way as to place it as a destination university, particularly among peer universities in the state of Georgia and among those universities in the nation granting doctoral degrees in programs that balance liberal education with professional preparation. In addition to this bold pledge of shaping, creating, and maintaining such a distinctive educational mission as expressed in its degree programs, it also promises to be a leader in campus safety and campus life. That is to say, West Georgia will be guided by a commitment to a safe and engaging campus. West Georgia predicts a growing enrollment, and the University is committed to a steady and smart growth that together with careful resource management will enhance our primary mission of academic excellence in a personal environment. Finally, we are committed to our external community from Atlanta to India to Japan, but we are quite mindful of our local community of Carrollton, Georgia, and will build on all of our current obligations of giving students opportunities for service work in the community even as we invite the community into our campus and thus work together to develop our neighborhood as a recognizable university village.

The Four Guiding Principles and Twelve Goals

Guiding Principle 1: The University will develop and support a distinctive set of quality academic programs ranging from bachelors to doctorates that blend the best of professionalized liberal education, experiential learning, and individual transformation.

Goal 1: Every undergraduate academic program will demonstrate a distinctive blending of liberal education, professional competencies, and experiential learning, preparing students to be ethically responsible and civically engaged professionals in the global economy of the 21st century.

Goal 2: Every undergraduate student will be advised to take advantage of one of multiple available learning communities. Learning communities that are available to students will include communities organized by living arrangement, by year in program, by other co-curricular associations – Honors Program, Advanced Academy, Band, Athletics, Debate, or program in the major.

Goal 3: The University will endeavor to increase enrollment in and graduation from graduate programs, including doctoral programs, that have as their mark a practical professional purpose, experiential learning opportunities, and an intellectual program informed by a foundation of liberal education.

Guiding Principle 2: Every responsible agency of the University will be dedicated to creating a safe, supportive, and engaging campus life.

Goal 4: The University will maintain an environment that is safe and conducive to learning.

Goal 5: The University community will provide a balanced variety of cultural, recreational, leisure, and informal education programming opportunities for faculty, staff, and students that enhance the quality of campus life.

Goal 6: All units will strive to improve the compensation and working environment.



Guiding Principle 3: The steady enrollment growth over the next five years will be managed to enhance the University's dedication to educational excellence in a personal environment.

- Goal 7: The University will endeavor to increase our overall enrollment to 14,500 by the year 2015.
- Goal 8: With our enrollment growth West Georgia will remain committed to the following targets of academic quality: faculty-student ratio of 18 to 1; average class size of 29; full-time to part-time faculty ratio of 4.4 to 1.
- Goal 9: West Georgia will develop several new facilities to improve quality along with meeting capacity demands due to enrollment growth, such as new classroom space for Nursing and Art.

Guiding Principle 4: The University will increase its fund-raising and community service to match the needs of all of our stakeholders and communicate our story effectively.

- Goal 10: Capital Campaign: The Development Office will prepare for a capital campaign to assist in meeting the long-term needs of the University of West Georgia
- Goal 11: Communication and Marketing: The Office of University Communications and Marketing (UCM) will internally and externally promote the missions and goals of the strategic plan. This will be achieved by aligning the institution's integrated marketing plan (advertising, visual identity standards, web presence, media relations, etc.) with the strategic plan.
- Goal 12: Community Relations: The University will engage the local community educationally, culturally and recreationally.

Accreditations and Affiliations

The University of West Georgia is accredited by the Commission on Colleges of the Southern Association of Colleges and Schools to award baccalaureate, master, and doctorate degrees. Contact the Commission on Colleges at 1866 Southern Lane, Decatur, Georgia 30033-4097 or call 404-679-4501 for questions about the accreditation of the University of West Georgia.

The purpose of publishing the Commission's address and contact number is to enable interested constituents (1) to learn about the accreditation status of the institution, (2) to file a third-party comment at the time of the institution's decennial review, or (3) to file a complaint against the institution for alleged non-compliance with a standard or requirements. However, inquiries about the institution, such as admission requirements, financial aid, educational programs, etc., should be addressed directly to the institution and not to the Commission's office.

Accreditations also include the following:

- *The Association to Advance Collegiate Schools of Business (International)*
- *American Chemical Society*
- *The American Association of Colleges of Nursing*
- *American Speech-Language Hearing Association*
- *Commission on Collegiate Nursing Education*
- *Computing Accreditation Commission of the Accreditation Board for Engineering and Technology*
- *Council for Humanistic Transpersonal Psychologies*
- *National Association of Schools of Arts and Design*
- *National Association of Schools of Music*
- *National Association of Schools of Public Affairs and Administration*
- *National Association of Schools of Theatre*
- *National Council for Accreditation of Teacher Education*

Organizations in which the University holds institutional membership include the American Council on Education, the American Association of State Colleges and Universities, the American Association of Colleges for Teacher Education, the Conference of Southern Graduate Schools, the Georgia Association of Colleges, the National Association for Foreign Student Affairs, the National Business Education Association, and the National Collegiate Honors Council.



The Honors College

The Honors Program was initiated in 1975 and in June 1999 became the Honors College, making it the first in Georgia. The Honors College includes the Advanced Academy of Georgia, the Select Student Program, HOPE-ACCEL program for jointly enrolled high school juniors and seniors, and the Intercollegiate Debate Program. It does not award degrees, but offers a distinctive curriculum featuring special sections of courses required in the core curriculum and junior and senior seminars. The courses are designed to offer more opportunities for research in preparation for graduate or professional school and places more responsibility on the individual student.

Admission is open to entering freshmen who meet two of the following three criteria: (1) a combined SAT score of at least 1200 or ACT Composite score of 26, (2) a minimum score of 610 on the Critical Reading portion of the SAT or an ACT English score of 27, or (3) a high school grade point average of 3.5 or higher. The college is also open to any student who has completed 15 or more hours at West Georgia with an overall GPA of 3.2 or higher. Students must enter no later than the beginning of their sophomore year. Honors courses are open on a space available basis to any student with a cumulative GPA of 3.2 or higher who has completed 15 or more credit hours.

Student Affairs and Enrollment Management

The Division of Student Affairs and Enrollment Management complements the University's academic programs by offering a variety of educational services, developmental programs, and activities designed to enrich the students' college life.

EXCEL: Center for Academic Success, is devoted to the academic success students with special programs for first year, transfer, and undecided.

EXCEL offers the following services:

- Tutoring in all the undergraduate core curriculum classes;
- Academic advising for all students who not decided on a major as well as certain pre-majors, such as criminology, mass communication, nursing, and psychology.
- Free Major and career exploration program to help find the best fit major and future career path.

Multicultural Achievement Program (MAP) is housed in the EXCEL Center and assists minority students academically. MAP provides programs and services to meet the needs of minority students:

- Certified peer mentors, who are campus leaders and academic achievers, work with small groups of new students while servicing as role models, helping freshmen establish good study habits, and being a referral agent to other campus resources.
- Seminars related to achieving academic success and enhancing cultural awareness
- Seminars related to achieving academic success and enhancing cultural awareness.
- A second year program is offered which guides students with exploring majors and careers and provides opportunities for second year students to engage in a variety of learning opportunities awareness.
- Minority alumni serve as mentors to juniors and seniors and lead career seminars.
- The academic progress of students is monitored, and individual academic coaching sessions are available in note-taking, time management and various study skills.

The *Center for Student Involvement* facilitates student engagement, leadership, and involvement through a variety of programs and services. The office coordinated the registration process for over 150 student organizations which involve 5,200 members and provided over 1,300 programs and activities in 2010-2011. The staff provides advisement for a Social Greek system and governing councils (National Pan-Hellenic Council, the National Pan-Hellenic Council, and the Interfraternity Council), that involved over 10 percent of the undergraduate population. The staff also advised the Student Activities Council, which provides a number of diverse student programs including Homecoming, Welcome Back Week, and Spring Fling, as well as comedy, music and multicultural programs. The office coordinates the annual Campus Activities Awards Program and provides numerous leadership training programs during the year through the UWG LEAD (Leadership Education and Development) Program. Leadership programs included LEAD Weekend, Leadership in the Wilderness, an Emerging Leaders Program and the popular Leadership To Go.



The *Student Development Center* provides career, mental health, academic counseling, and support services for disabled students. The Center provides training and supervision for select graduate students. In the past year, approximately 1,000 students were seen for personal, academic and career counseling. More than 1,800 students participate in group and developmental programs offered each year. Eleven of the twelve counselors on staff are licensed and hold a specialist or doctoral degree. The Center also provides 680 disabled students with assistance in physical and academic access to campus and classroom programs.

The *University Bookstore* carries all textbooks, materials, and school supplies necessary for students' use in their classes. The Bookstore offers a wide selection of imprinted gifts and clothing, office supplies, general books, and art supplies. It is also a UPS pick-up station. New and used textbooks are available online at www.bookstore.westga.edu.

Source: Undergraduate Catalog 2011-2012

The mission of *University Recreation (UREC)* is to inspire, empower, and educate the university community by providing comprehensive, high-quality, student-focused programs, facilities, and services that create community, connectivity, and develop exceptional leaders who value and embody healthy lifestyles.

The department is responsible for Club Sports, Event Management, Fitness/Wellness, Intramural Sports, Outdoor Recreation, and the Campus Center operation and management. Open in 2006, the Campus Center is a 131,000 sq. ft. facility and contains 13,000 sq. ft. fitness center, four basketball courts, 50 ft. tall and 25 ft. tall climbing walls, two group exercise studios, indoor track, game room, 9,000 sq. ft. ballroom, meeting spaces, locker rooms, and an equipment rental center.

Throughout the course of the year, the Center's turnstiles recorded approximately 300,000 swipes and around 1,200 meetings and events were hosted in the ballroom and meeting spaces. Through the Fitness/Wellness, the department offers 50 group exercise classes a week including step aerobics, Spinning, yoga, Pilates, Zumba, and boot camp; over 200 personal training sessions are conducted; and specialized programs such as UWG's Biggest Loser are coordinated. 120 Intramural Sports teams participate in sports such as flag football, soccer, basketball, softball, tennis, and ultimate Frisbee, with the champions competing at the state, regional, or national level. The Outdoor Recreation program leads 12-15 local and regional trips per year including backpacking, caving, sea kayaking, whitewater rafting, rock-climbing, and hiking. UREC operates a Rental Center, where members of the Campus Center can check out canoes, bikes, kayaks, etc. to utilize in conjunction with our programs or on their own.

University Recreation is one of the largest employers of students. Throughout the course of the year, UREC utilizes between 100-150 students to manage and operate its facilities, programs and services.

Source: University Recreation

The *Department of Career Services* provides a comprehensive career development and employment program for all students and alumni of West Georgia. Available services include job search/career coaching, resume referral to employing organizations, student employment opportunities, and career-related learning experiences through professional practice programs.

The department offers the following specific services:

- Career Employment assistance (job listing services, job search seminars, special career events, and other services).
- Student Employment (on and off campus part-time, seasonal, temporary jobs);
- Professional Practice Program opportunities, including internships and cooperative education (major and/or career related work experience);
- Cooperative Education provides a well-balanced combination of college study and periods of hands-on experience in a work setting related to the student's major and/or career goals.

- Internships provide a type of community-based learning experience and prepare students for services in their chosen field of study. Internships aid the student to develop their intellectual capacity, understand and appreciate democratic institutions, and stimulate students toward the examination and development of personal and professional values.

Career Services		
Student Employment	FY 2010	FY 2011
Student Visits to Office	7,478	8,865
Student Referrals	10,389	12,925
Placements	602	744
Wages Generated	\$1,790,624	\$2,458,816
Volunteer Services Office		
Student Visits to Office ¹	666	651
Student Referrals	782	677
Student Opportunities	154	160
Professional Practice		
Counseling Contacts ¹	1,128	1,001
Student Referrals	209	187
Student Placement	116	128
Participating Employers	59	82
Wages Generated	\$245,242	\$341,467
Career Employment Program		
Student Visits to Office	818	1,545
Resume Referrals	467	441
Overall Employer Recruitment	210	232

¹Combined number of students for Volunteer Services and Professional Practice Program

Source: Career Services

Health Services provides diagnosis, first aid, and treatment of minor or short-term acute illnesses or injuries under the supervision of a physician. Health Services is open from 8:00 a.m. to 6:00 p.m. Monday through Thursday and 8:00 a.m. to 5:00 p.m. Friday. Students are referred to other medical personnel or facilities for special services such as x-ray, surgery, and dentistry. Medication necessary for treatment is usually available at the Center. In addition, many tests performed in the Health Center laboratory are covered by the student's health fee. Health Services saw 27,167 patients and filled 52,372 prescriptions in Fiscal Year 2011.

Source: Health Services

The Department of Housing and Residence Life provides a living/learning community environment that complements the educational process of the University. Ten residence halls house more than 3,000 West Georgia students. Unmarried freshmen that do not reside with parents within a thirty-mile radius of the University are required to live on campus. We offer co-ed and single gender housing options for students who live on campus. Co-ed residence halls have separate areas for men and women, typically separated by wings. Residence halls provide students with the convenience of being close to campus life and its activities as well as comfortable and attractive surroundings. On campus living provides each student with the community living experience, which fosters the development of disciplined minds, social conscientiousness, and responsibility for governing hall affairs. In addition, the department offers a variety of social, educational, and recreational programs which are provided to promote individual growth and development.

Student Housing Occupancy			
Residence Hall	Type	Fall 2010	Fall 2011
Arbor View	Co-ed	583	574
Bowdon	Co-ed	295	264
Boykin	Women	174	168
Downs	Co-ed	193	290
Gunn	Co-ed	76	94
Strozier Complex	Co-ed	117	173
Tyus	Co-ed	173	181
University Suites	Co-ed	593	588
Watson	Women	270	290
Greek Villiage		219	258
By Level			
Academy		40	57
Freshman		1,780	1,905
Sophomore		479	439
Junior		244	245
Senior		140	168
Graduate		10	12
Other			54
Total		2,693	2,880

Source: Housing and Residence Life

Intercollegiate Athletics

<http://www.uwgsports.com/>

University of West Georgia (UWG) Athletics is a member of NCAA Division II and the Gulf South Conference (GSC), one of the oldest and most prestigious conferences in Division II. The university currently offers 12 varsity sports: baseball, men's and women's basketball, men's and women's cross country, football, men's and women's golf, women's soccer, women's softball, women's tennis and women's volleyball.

UWG proudly boasts athletic facilities that rank among the finest of any Division II program in the nation. Since 2009 six teams have moved into new, state-of-the-art home venues. The Coliseum serves as home to the men's and women's basketball and volleyball teams; softball and soccer have moved into new, on-campus home stadiums, while UWG football now plays its home games in University Stadium.

The new homes for football, soccer, and softball are part of the sprawling UWG Athletic Complex. Beyond the new playing sites, this facility includes a women's field house for the soccer and softball programs, a soccer practice field, football practice fields, and the soon-to-be completed Athletic Office Building that includes locker room and training room facilities. Beyond, plans are on the drawing board for a new baseball facility and other improvements within the coming years.

West Georgia teams are no strangers to success. From a 1974 Men's Basketball National Championship to the 1982 NCAA Football, UWG Athletics continues to be a strong contender in Gulf South Conference and NCAA events. Men's Basketball has participated in eight NCAA Regional Tournaments and 13 GSC post-season events since 1994. In 2002 the team won both the GSC and NCAA South Region titles, thus earning the school's first ever berth in the Division II Elite Eight. Baseball captured the GSC title in 1998, earning the right to host the NCAA South Central Regional. UWG captured the tournament to earn a berth in the Division II World Series. Beyond, the football program won GSC titles in 1997, 1998 and 2000, and has advanced to the NCAA Division II Playoffs on four separate occasions.

Women's volleyball earned GSC Tournament berths from 2004-2007, winning the school's first GSC title and advancing to the NCAA Tournament in 2007. Women's basketball has a lengthy record of accomplishment, including two GSC titles (1992, 1994) and advancing to the NCAA Tournament in many occasions, most recently in 2008.

Both men's and women's cross country teams enjoy long records of GSC success, combining for eight league crowns since the mid-1990s. In 2000 the women's cross country team captured the NCAA South Region title, and in 2003 claimed the league's individual title. Both programs continue to be among the GSC's best and appear regularly in the regional rankings.

Women's soccer and men's and women's golf have made a big contribution to the university's winning tradition. The soccer program has advanced three times to the GSC Tournament. Both golf teams have enjoyed success in regular season and GSC Tournament play, including the men's team twice (2007, 2009) qualifying a player for the NCAA Regional Tournament.

Women's tennis was re-introduced as an intercollegiate sport at UWG during the 2010-11 academic year. After a 10-year absence, the program has already shown significant growth, and prospects for future success are very bright.

Athletics has always played a major role in campus life at the University of West Georgia. The commitment is now stronger than ever to field successful teams with talented student-athletes who succeed in both the classroom and on the field of play.

Source: Intercollegiate Athletics

The Administration



Administrative Organization

The University System of Georgia

In 1931 Georgia State government reorganized and created the University System of Georgia's Board of Regents, which unified Georgia public higher education under one governing and management authority.

The Board of Regents is a State constitutional board responsible for governance, control, and management of its member institutions. The governor appoints members to the Board, who each serves seven years. The Board is composed of 18 members, five are appointed from the state-at-large and one from each of the 13 congressional districts. The Board elects a chancellor who serves as chief executive officer and chief administrative officer of the University System.

The Board oversees the 35 colleges and universities that comprise the University System of Georgia, Skidaway Institute of Oceanography and the Georgia Public Library System. These institutions enrolled approximately 318,027 students in fall of 2011 and employed 41,680 faculty and staff to provide teaching and related services to students and the communities.

The Board of Regents of the University System of Georgia is located at:

270 Washington Street, SW
Atlanta, Georgia 30334, U.S.A.

University System of Georgia Strategic Plan

Transforming the System, Changing Lives, Strengthening the State

The Board of Regents has developed a Strategic Plan that will guide and focus the actions of many toward continuing the great tradition of educating more Georgians to a higher level than at any time in history.

The Strategic Plan defines six broad goals designed to ensure the investment that the citizens of Georgia have made in their system of public higher education continues to serve the needs and transforms the lives of future generations.

For more information on the University System's Strategic Plan, go to: <http://www.usg.edu/strategicplan/>

The six strategic goals:

1. Renew excellence in undergraduate education to meet students' 21st century educational needs.
2. Create enrollment capacity to meet the needs of 100,000 additional students by 2020.
3. Increase the USG's participation in research and economic development to the benefit of a global Georgia.
4. Strengthen the USG's partnerships with the State's other education agencies.
5. Maintain affordability so that money is not a barrier to participation in the benefits of higher education.
6. Increase efficiency, working as a System.

The Chancellor and the Central Office staff are responsible for administering the affairs of the University System of Georgia under the general direction of the Board of Regents.

University of West Georgia

The President is responsible to the Chancellor for the operation and management of the University. The president is a member of the General Faculty, Chair of the President's Advisory Committee, Chair of the General Faculty, and ex officio member of all standing committees of the Senate.

The President's Advisory Committee, the Administrative Council, the Planning Council, and the Technology Coordination Council when requested by the President, shall advise on policy recommendations forwarded to the President by the Faculty Senate.

Source: USG Website and UWG Policies and Procedures

University System of Georgia

Institutions

Research Universities

Georgia Health Sciences University
 Georgia Institute of Technology
 Georgia State University
 University of Georgia

Regional Universities

Georgia Southern University
 Valdosta State University

State Universities

Albany State University
 Armstrong Atlantic State University
 Augusta State College
 Clayton State University
 Columbus State University
 Fort Valley State University
 Georgia College & State University
 Georgia Southwestern State University
 Kennesaw State University
 North Georgia College & State University
 Savannah State University
 Southern Polytechnic State University
 University of West Georgia

State Colleges

Abraham Baldwin Agricultural College (ABAC)
 Atlanta Metropolitan College
 College of Coastal Georgia
 Dalton State College
 Darton College
 East Georgia College
 Gainesville State College
 Georgia Gwinnett College
 Georgia Highlands College
 Georgia Perimeter College
 Gordon College
 Macon State College
 Middle Georgia College
 South Georgia College

Two-Year Colleges

Bainbridge College
 Waycross College

Independent Research

Skidaway Institute of Oceanography

2011-2012 Regents

Larry R. Ellis, Atlanta	At-Large
Robert "Bob" F. Hatcher, Macon	At-Large
Donald M. Leebern, Jr., McDonough	At-Large
Larry Walker, Perry	At-Large
Philip A. Wilheit, Sr., Gainesville	At-Large

By District

Kenneth R. Bernard, Jr., Douglasville	Thirteenth
Rutledge A. (Rusty) Griffin Jr., Valdosta	First
C. Thomas Hopkins, Jr., MD, Griffin	Third
W. Mansfield Jennings, Jr., Hawkinsville	Eighth
James R. Jolly, Dalton	Ninth
William "Dink" H. NeSmith, Jr., Athens	Tenth

Vice Chair

Doreen Stiles Poitevint, Bainbridge	Second
Willis J. Potts, Jr., Rome	Eleventh
Neil L. Pruitt, Jr., Norcross	Fifth
Wanda Yancey Rodwell, Stone Mountain	Fourth
Kessel Stelling, Jr., Columbus	Sixth
Benjamin "Ben" J. Tarbutton, III, Sandersville	Twelfth

Chair

Richard L. Tucker, Duluth	Seventh
---------------------------	---------

University System of Georgia Administrative Personnel

Mr. Henry "Hank" M. Huckaby

Dr. Steve W. Wrigley

CHANCELLOR

Executive Vice Chancellor for Administration

INTERNAL AUDIT AND COMPLIANCE

Mr. John Fuchko, III

Chief Audit Officer and Associate Vice Chancellor

ACADEMIC AFFAIRS

Mr. David Morgan

Dr. Felita Williams

Dr. Marci M. Middleton

Mr. Bob Cernock

Dr. Lynne Weisenbach

Dr. Linda Noble

Mr. Ben Robinson

Dr. Curtis A. Carver Jr.

Dr. Susan Campbell Lounsbury

Ms. Virginia Michelich

Ms. Tonya Lam

Interim Executive Vice Chancellor and Chief Academic Officer

Assistant Vice Chancellor for Academic Planning

Assistant Vice Chancellor for Academic Programs

Associate Vice Chancellor for Data Administration/Chief Data

Vice Chancellor, Educator Preparation and Innovation

Associate Vice Chancellor for Faculty Affairs

Executive Director of Health Workforce Planning and Analysis

Vice Chancellor and Chief Information Officer

Assistant Vice Chancellor, Research and Policy Analysis

Assistant Vice Chancellor for Student Achievement

Associate Vice Chancellor, Student Affairs

ADMINISTRATIVE AND FISCAL AFFAIRS

Mr. John E. Brown

Dr. Lamar Veatch

Ms. Linda Daniels

Mr. Peter Hickey

Ms. Sandra Neuse

Mr. J. Burns Newsome

Vacant

Mr. Tom Scheer

Ms. Dorothy Roberts

Ms. Tina Woodard

Ms. Shelley C. Nickel

Vice Chancellor Fiscal Affairs and Treasurer

Assistant Vice Chancellor, Georgia Public Library Service

Vice Chancellor for Facilities

Associate Vice Chancellor, Development and Administration

Assistant Vice Chancellor, Compliance and Operations

Vice Chancellor, Legal Affairs and Secretary to the Board

Vice Chancellor for Human Resources

Associate Vice Chancellor for Life and Health Benefits

Systems Benefits Administrator

Assistant Vice Chancellor for Professional Development

Associate Vice Chancellor, Planning and Implementation

EXTERNAL AFFAIRS

Mr. Tom Daniel

Ms. Terry Durden

Ms. Amanda D. Seals

Mr. John Millsaps

Sr. Vice Chancellor, Office of External Affairs

Assistant Vice Chancellor, Office of Economic Development

Executive Director, Government Relations

Associate Vice Chancellor, Media and Publications

Source: University System of Georgia
www.usg.edu

University of West Georgia Administration

Officers of General Administration

Dr. Beheruz N. Sethna	President
Dr. Michael Horvath	<i>Provost and Vice President</i> Academic Affairs
Mr. James R. Sutherland	<i>Vice President</i> Business and Finance
Dr. Scot Lingrell	<i>Vice President</i> Student Affairs and Enrollment Management
Dr. Bill Estes	<i>Vice President</i> University Advancement

Academic Colleges and School

Dr. Randy Hendricks	<i>Dean</i> College of Arts and Humanities
Dr. Kim Metcalf	<i>Dean</i> College of Education
Dr. Bruce Landman (I)	<i>Dean</i> College of Science and Mathematics
Dr. N. Jane McCandless	<i>Dean</i> College of Social Sciences
Dr. Melanie Clay	<i>Executive Director</i> Extended Learning and Dean UWG e-Core
Dr. Michael Hester	<i>Dean</i> Honors College and Trans-disciplinary Studies
Dr. Faye McIntyre	<i>Dean</i> Richards College of Business
Dr. Kathryn Grams	<i>Dean</i> School of Nursing

Administrative

Mr. Justin Barlow	<i>Director</i> Admissions
Mr. Jimmy L. Agan	<i>Director</i> Continuing Education
Ms. Kimberly Jordan	<i>Director</i> Financial Aid
Ms. Kathy Kral	<i>Chief</i> Information Officer
Dr. Ebenezer F. Kolajo	<i>Director</i> Institutional Research and Planning
Ms. Lorene Flanders	<i>Dean</i> University Libraries
Ms. Donna Haley	<i>Registrar</i>

Instructional Departments and Chairpersons

College of Arts and Humanities

Mr. Kevin Shunn	<i>Art</i>
Dr. David Newton	<i>English and Philosophy</i>
Dr. Felix Tweraser	<i>Foreign Languages</i>
Dr. Steve Goodson	<i>History</i>
Dr. Kevin Hibbard	<i>Music</i>
Dr. Pauline Gagnon	<i>Theatre</i>

Richards College of Business

Dr. Ron Colley	<i>Accounting and Finance</i>
Dr. David Boldt	<i>Economics</i>
Dr. Thomas Gainey	<i>Management</i>
Dr. Salil M. Talpade	<i>Marketing and Real Estate</i>

College of Education

Dr. Michael Garrett	<i>Collaborative Support and</i> <i>Intervention</i>
Dr. Donna Harkins	<i>Early Learning and</i> <i>Childhood Education</i>
Dr. Barbara Kawulich (I)	<i>Educational Innovation</i>
Dr. Frank Butts	<i>Leadership and Applied</i> <i>Instruction</i>

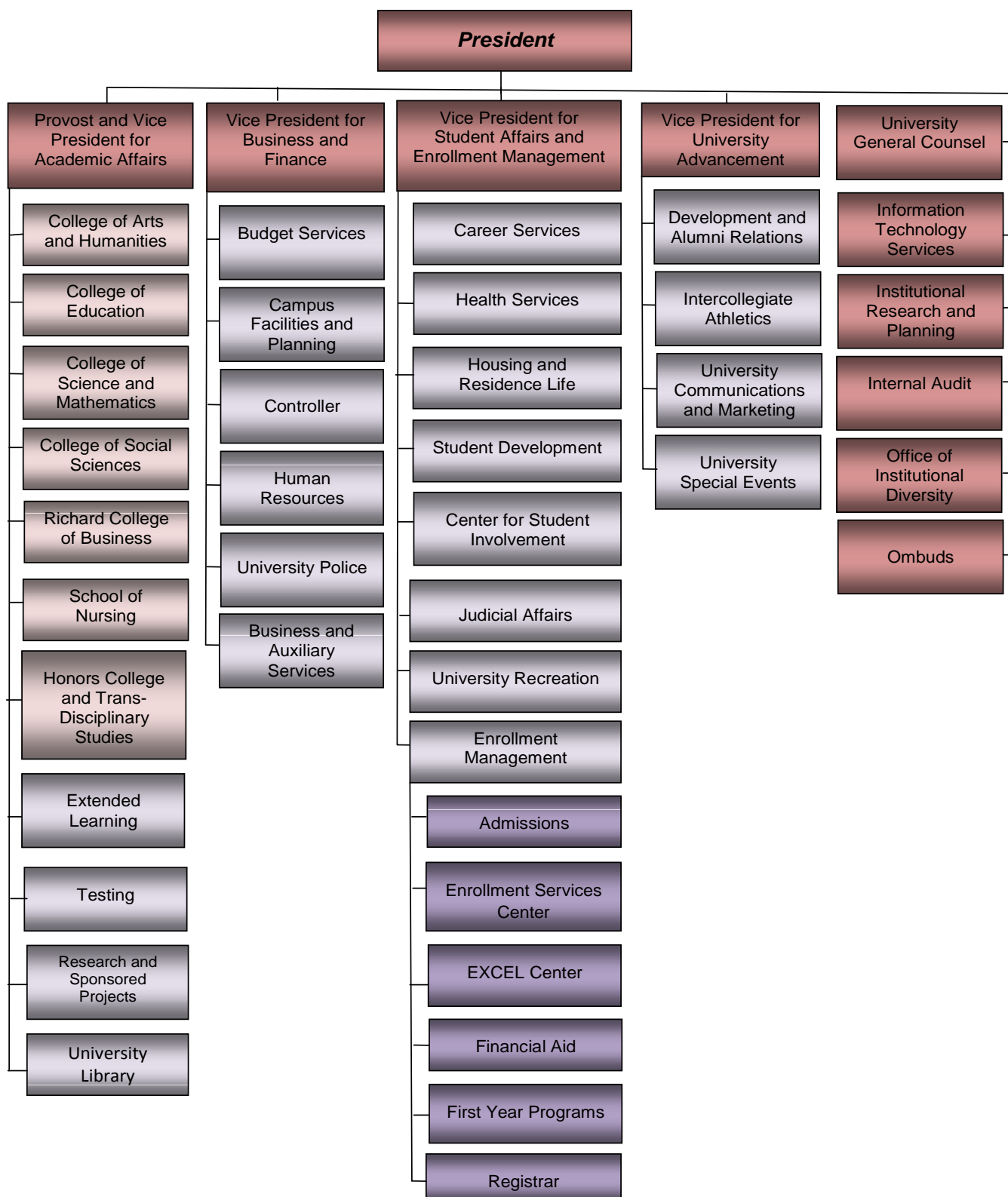
College of Science and Mathematics

Dr. Henry Zot	<i>Biology</i>
Dr. Spencer Slattery	<i>Chemistry</i>
Dr. Adel Abunawass	<i>Computer Science</i>
Dr. Curtis L. Hollabaugh	<i>Geosciences</i>
Dr. Van Minh Nguyen (I)	<i>Mathematics</i>
Dr. Bobby E. Powell	<i>Physics</i>

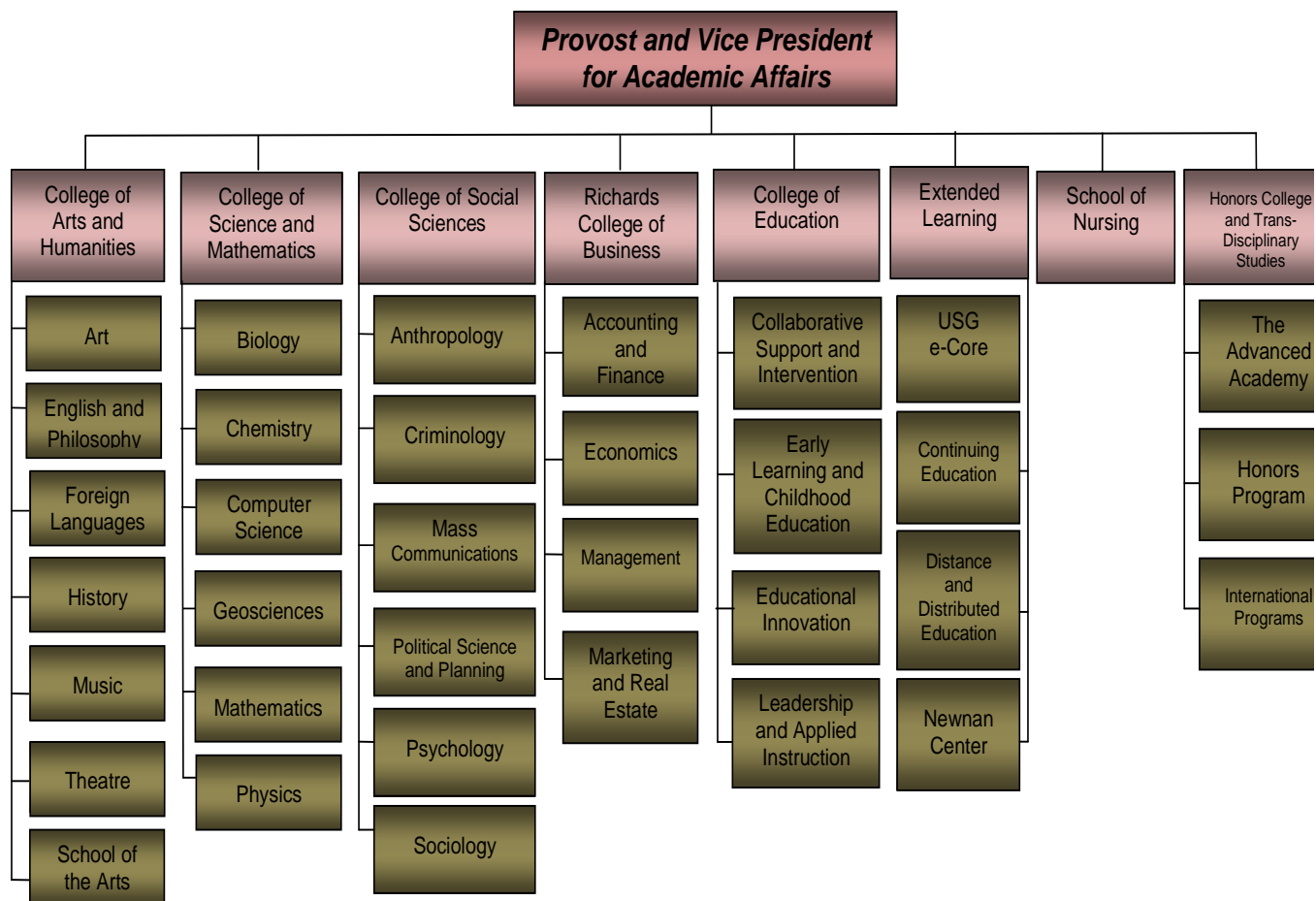
College of Social Sciences

Dr. Marjorie Snipes	<i>Anthropology</i>
Dr. David Jenks (I)	<i>Criminology</i>
Dr. Camilla Gant	<i>Mass Communications</i>
Dr. Robert M. Schaefer	<i>Political Science</i>
Dr. Donadrian Rice	<i>Psychology</i>
Dr. Robert Sanders (I)	<i>Sociology</i>

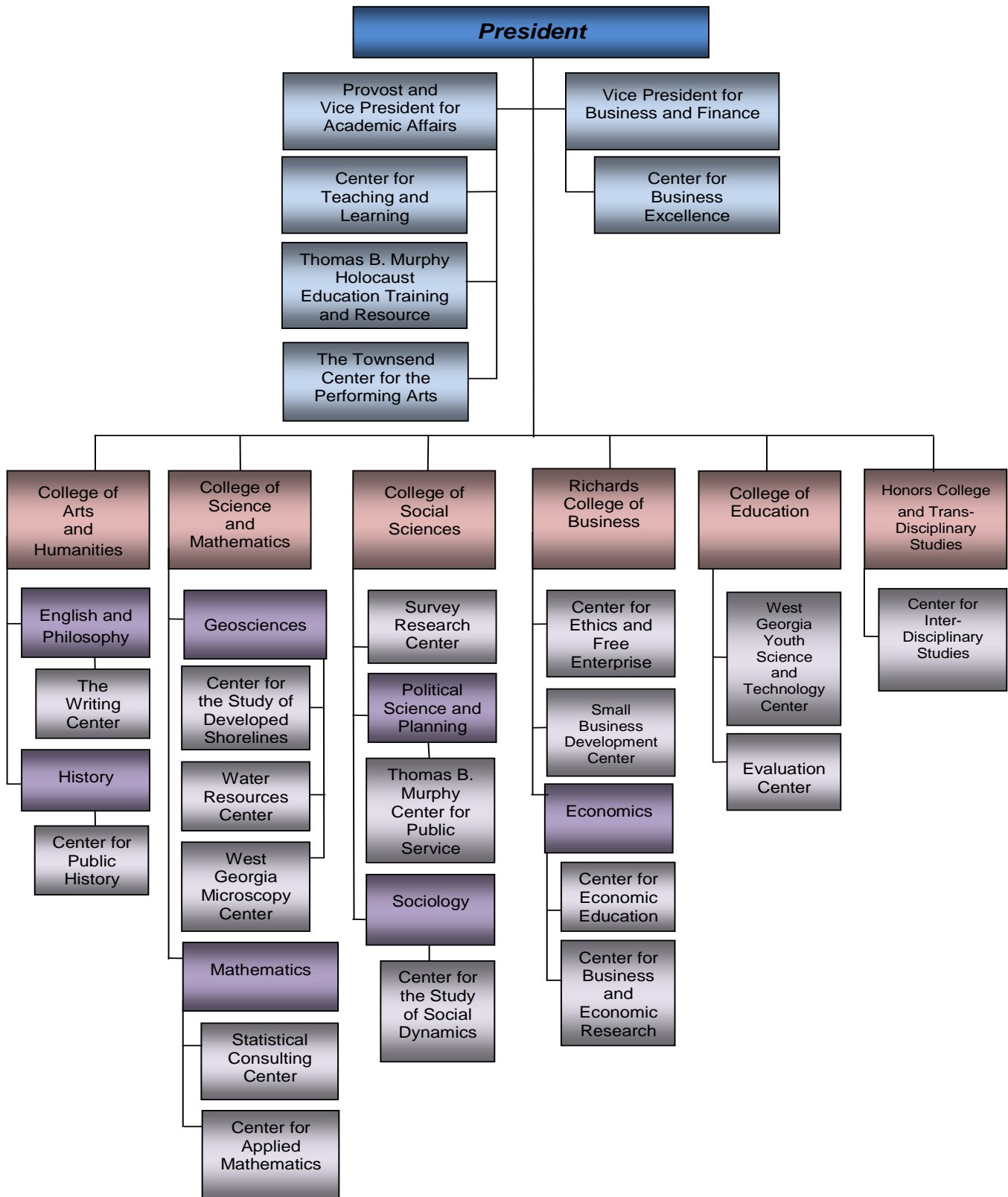
UWG Administration Units



UWG Academic Units



UWG Centers



Enrollment and Credit Hour Production



Composition of UWG Student Body Fall 2002 - 2011

	2002	2003	2004	2005	2006	2007	2008	2009	2010	2011
Classification										
Freshman	3,208	3,264	3,316	3,258	3,247	3,424	3,554	3,516	3,293	3,414
Sophomore	1,613	1,662	1,652	1,750	1,812	1,902	2,031	2,117	2,205	2,231
Junior	1,362	1,447	1,548	1,492	1,589	1,581	1,648	1,810	1,915	1,979
Senior	1,340	1,515	1,613	1,698	1,666	1,768	1,867	2,025	2,152	2,251
Graduate	2,012	2,210	1,937	1,808	1,688	1,835	2,022	1,878	1,576	1,617
Joint Enrollment	92	107	94	93	113	124	86	109	90	105
*Others	48	50	56	55	48	43	44	45	52	49
Total Enrollment	9,675	10,255	10,216	10,154	10,163	10,677	11,252	11,500	11,283	11,646
Gender (total students)										
Female	6,144	6,561	6,446	6,376	6,406	6,700	7,075	7,182	7,051	7,253
Male	3,531	3,694	3,770	3,778	3,757	3,977	4,177	4,318	4,232	4,393
Ethnicity										
Hispanic/Latino								355	348	456
Non-Hispanic								9,529	9,394	9,867
Ethnicity Unknown/Undeclared								1,616	1,541	1,323
Race										
African/Black American	2,151	2,314	2,367	2,342	2,461	2,707	2,837	2,920	2,959	3,486
American Indian	20	24	24	22	22	29	32	44	36	27
Asian or Pacific Islander	114	139	161	155	161	188	192			
Asian								181	163	179
Native Hawaiian/Pacific Islander								7	10	14
Caucasian/White	7,176	7,505	7,363	7,281	7,136	7,142	7,364	7,059	6,422	6,904
Hispanic	101	127	151	171	199	214	272		348	456
Multiracial	113	146	150	183	184	217	259	84	152	308
Other/Undeclared						180	296	1,205	1,193	272
New Students										
Beginning Freshmen	1,637	1,740	1,719	1,656	1,709	1,828	1,998	1,916	1,825	1,940
**Transfers	576	634	615	577	591	602	609	661	601	714
Graduate Students	405	389	289	288	317	327	387	385	287	396
Joint Enrollment	64	77	67	74	80	90	54	79	64	75
*Others	28	26	37	36	31	29	39	44	48	46
Total	2,710	2,866	2,727	2,631	2,728	2,876	3,087	3,085	2,825	3,171
Attendance Status										
Full-time Undergraduate	6,374	6,741	6,899	6,921	7,002	7,415	7,833	8,126	8,123	8,265
Full-time Graduate	372	419	381	422	360	453	468	549	529	532
Total	6,746	7,160	7,280	7,343	7,362	7,868	8,301	8,675	8,652	8,797
Part-time Undergraduate	1,289	1,304	1,380	1,425	1,473	1,427	1,397	1,496	1,584	1,764
Part-time Graduate	1,640	1,791	1,556	1,386	1,328	1,382	1,554	1,329	1,047	1,085
Total	2,929	3,095	2,936	2,811	2,801	2,809	2,951	2,825	2,631	2,849

*Transients are included in this category.

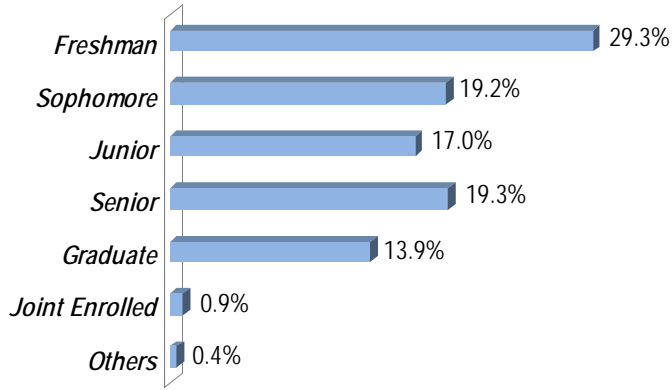
**Category includes transfer freshmen, sophomores, juniors, and seniors.

New IPEDS Race/Ethnicity reporting effective summer 2009.

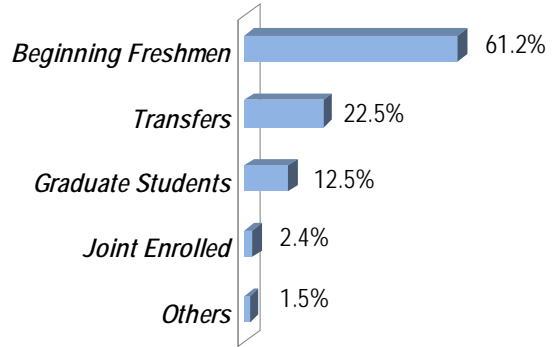
Source: Offices of the Registrar and Institutional Research and Planning

Student Body At A Glance Fall 2011

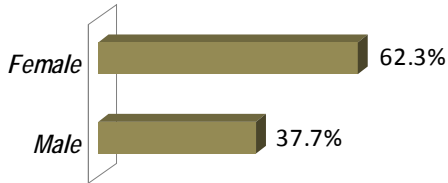
Classification



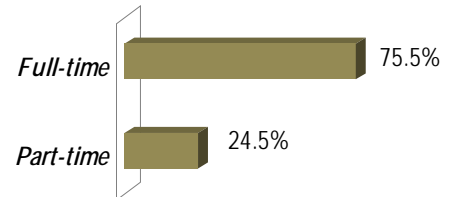
New Students



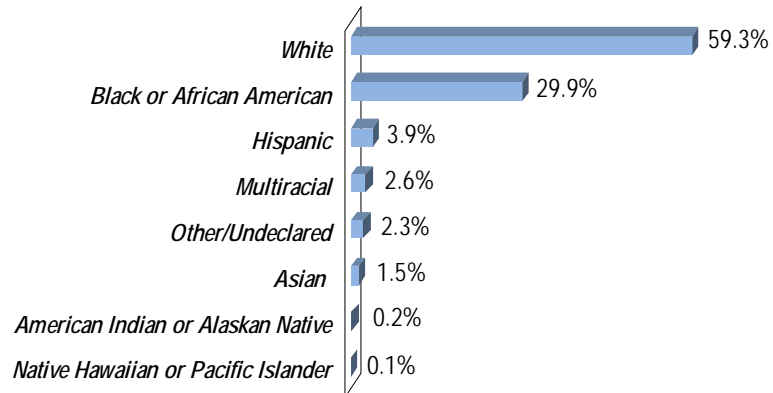
Gender



Attendance Status



Race



Geographic Origin of Students by County Fall 2011

Service Area Counties	Undergraduate	Graduate	Total
Bartow	78	27	105
Butts	24	2	26
Carroll	1,437	225	1,662
Catoosa	27	6	33
Chattooga	22	4	26
Cherokee	126	26	152
Coweta	1,027	169	1,196
Dade	5	4	9
Dawson	11	0	11
Douglas	886	125	1,011
Fannin	10	2	12
Fayette	443	66	509
Floyd	140	35	175
Forsyth	81	6	87
Gilmer	9	2	11
Gordon	48	14	62
Haralson	277	27	304
Harris	30	2	32
Heard	82	11	93
Henry	303	27	330
Lamar	13	5	18
Meriwether	21	10	31
Monroe	5	2	7
Murray	24	9	33
Muscogee	59	22	81
Newton	95	9	104
Paulding	383	60	443
Pickens	8	0	8
Pike	17	3	20
Polk	119	24	143
Rockdale	109	13	122
Spalding	60	7	67
Talbot	2	0	2
Troup	148	30	178
Upson	23	3	26
Walker	56	3	59
Whitfield	74	11	85
Total	6,282	991	7,273

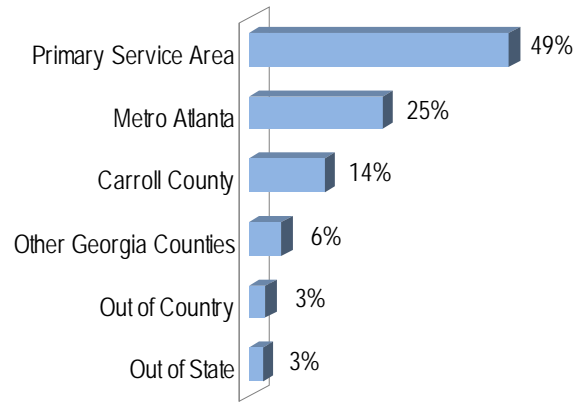
Five Metro Area Counties	Undergraduate	Graduate	Total
Clayton	229	35	264
Cobb	625	133	758
Dekalb	547	60	607
Fulton	572	113	685
Gwinnett	556	43	599
Total	2,529	384	2,913

	Undergraduate	Graduate	Total
Other Georgia Counties	631	84	715
Out of Country	329	61	390
Out of State	258	97	355
Total	1,218	242	1,460

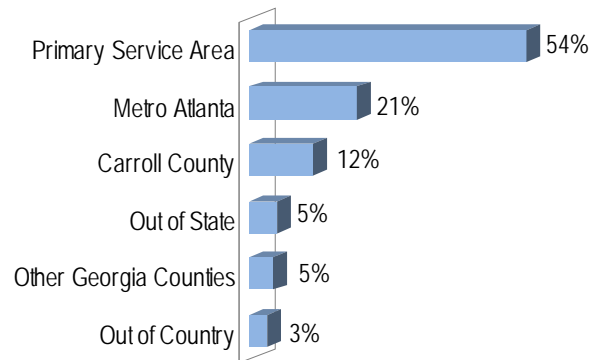
Source: Office of Institutional Research and Planning

Geographic Origin of Students Fall 2011

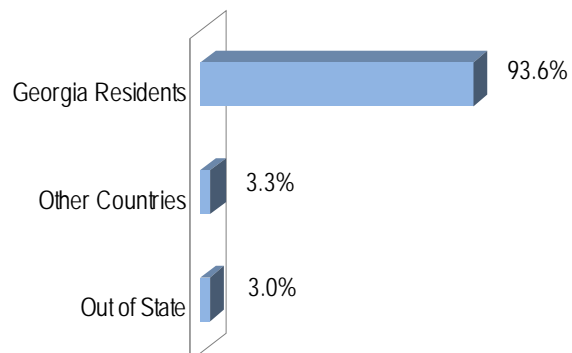
Undergraduate Students



Graduate Students



Geographic Origin



UWG Admissions Data

Fall 2002 - 2011

The Office of Admissions administers the admissions policies and procedures for the University, evaluates eligibility of applicants for admission, and recommends policies governing admission.

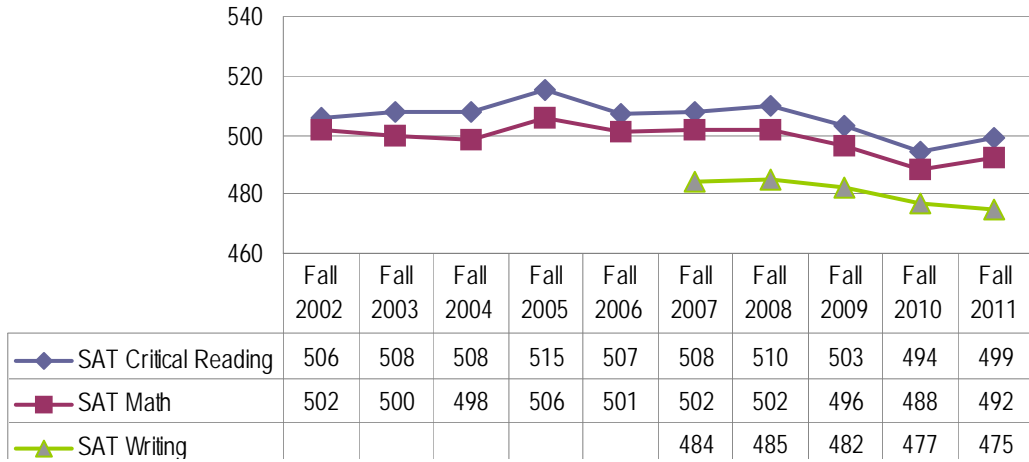
The Office of Admissions also coordinates a comprehensive student recruitment program for the University.

All Students	2002	2003	2004	2005	2006	2007	2008	2009	2010	2011
Students Enrolled	9,675	10,255	10,216	10,154	10,163	10,677	11,252	11,500	11,283	11,646
New Students Enrolled	2,710	2,866	2,727	2,631	2,728	2,876	3,087	3,085	2,825	3,171
New Students Enrolled	28%	28%	27%	26%	27%	27%	27%	27%	25%	27%
Graduate Students										
Enrolled	2,012	2,210	1,937	1,808	1,688	1,835	2,022	1,878	1,576	1,617
New Graduate Students Enrolled	405	389	289	288	317	327	387	385	287	396
New Graduate Students Enrolled	20%	18%	15%	16%	19%	18%	19%	21%	18%	25%
Undergraduate Students										
Enrolled	7,663	8,045	8,279	8,346	8,475	8,842	9,230	9,622	9,707	10,029
New Undergraduate Students Enrolled	2,305	2,477	2,438	2,343	2,411	2,549	2,700	2,700	2,538	2,775
New Undergraduate Students Enrolled	30%	31%	29%	28%	28%	29%	29%	28%	26%	28%
All Undergraduates										
Undergraduate Applications Submitted	5,692	6,316	6,471	6,676	7,331	7,361	7,571	7,528	7,876	8,254
Undergraduate Applicants Accepted	3,597	3,954	3,940	3,771	3,842	4,004	4,483	4,429	4,424	4,641
Undergraduate Applicants Enrolled	2,241	2,400	2,371	2,269	2,331	2,459	2,646	2,621	2,474	2,630
Undergraduate Applicants Accepted	63%	63%	61%	56%	52%	54%	59%	59%	56%	56%
Accepted and Enrolled	62%	61%	60%	60%	61%	61%	59%	59%	56%	57%
New Freshman Students										
New Freshman Applicants	4,451	4,848	4,953	5,175	5,696	5,803	6,159	5,981	6,361	6,634
Freshman Applicants Accepted	2,830	3,026	3,031	2,859	2,937	3,089	3,589	3,444	3,460	3,637
New Freshman Students Enrolled	1,637	1,740	1,719	1,656	1,709	1,828	1,998	1,916	1,825	1,991
New Freshman Applicants Accepted	64%	62%	61%	55%	52%	53%	58%	58%	54%	55%
New Freshman Accepted and Enrolled (Yield)	58%	58%	57%	58%	58%	59%	56%	56%	53%	55%
New Transfer Students										
New Transfer Applicants	1,241	1,468	1,518	1,501	1,635	1,558	1,412	1,547	1,515	1,620
Transfer Applicants Accepted	767	928	909	912	905	915	894	985	964	1,004
New transfer Students Enrolled	604	660	652	613	622	631	648	705	649	639
New Transfer Applicants Accepted	62%	63%	60%	61%	55%	59%	63%	64%	64%	62%
New Transfer Accepted and Enrolled	79%	71%	72%	67%	69%	69%	72%	72%	67%	64%
Scores										
Mean SAT Critical Reading	506	508	508	515	507	509	510	503	494	499
Mean SAT Math	502	500	498	506	501	502	502	496	488	492
Mean SAT Writing	-	-	-	-	-	484	485	482	477	475
Mean High School GPA First-time Full-time	2.98	2.96	2.97	3.01	3.00	3.09	3.04	3.04	3.06	3.06

Source: Offices of Admissions, Registrar, and Institutional Research and Planning

First-time Entering Freshmen

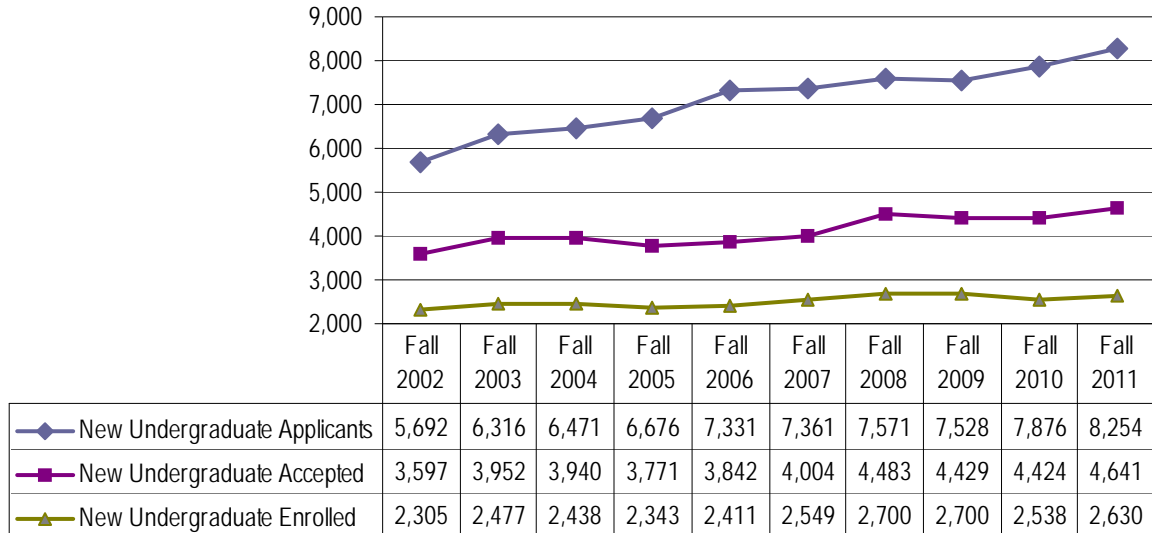
Entering Freshmen Average SAT Scores*



*SAT Scores are from the re-centered scale.

Note: Effective Fall 2007 SAT Verbal became SAT Critical Reading and SAT Writing was added. Scores reported are for first-time, full-time freshmen students.

New Undergraduate Applicants' Profile



Total Enrollment and Student Credit Hour (SCH) by Level (FY 2006-2012)

Academic Years	Lower Level			Upper Level			Graduate Level			Total	
	Head Count	SCH	Avg. SCH	Head Count	SCH	Avg. SCH	Head Count	SCH	Avg. SCH	SCH	FTE*
2005-2006											
Summer 2005	1,331	12,422	9.3	1,989	11,226	5.6	1,480	8,092	5.5	31,740	2,790
Fall 2005	5,146	73,511	14.3	3,200	32,963	10.3	1,808	8,800	4.9	115,274	8,907
Spring 2006	4,282	63,354	14.8	3,412	33,901	9.9	1,682	8,425	5.0	105,680	8,121
Total		149,287			78,090			25,317		252,694	19,818
2006-2007											
Summer 2006	1,389	12,305	8.9	1,975	10,893	5.5	1,374	7,496	5.5	30,694	2,707
Fall 2006	5,207	75,008	14.4	3,268	33,539	10.3	1,688	8,198	4.9	116,745	8,942
Spring 2007	4,437	66,827	15.1	3,501	34,527	9.9	1,661	8,439	5.1	109,793	8,370
Total		154,140			78,959			24,133		257,232	20,019
2007-2008											
Summer 2007	1,581	14,313	9.1	2,177	11,689	5.4	1,444	8,101	5.6	34,103	2,976
Fall 2007	5,490	77,852	14.2	3,352	36,101	10.8	1,835	9,745	5.3	123,698	9,462
Spring 2008	4,693	71,303	15.2	3,598	36,092	10.0	1,917	10,592	5.5	117,987	8,948
Total		163,468			83,882			28,438		275,788	21,386
2008-2009											
Summer 2008	1,741	15,706	9.0	2,362	13,262	5.6	1,695	9,941	5.9	38,909	3,412
Fall 2008	5,714	82,945	14.5	3,516	37,266	10.6	2,022	11,078	5.5	131,289	9,989
Spring 2009	4,865	73,199	15.0	3,755	39,434	10.5	1,910	10,362	5.4	122,995	9,274
Total		171,850			89,962			31,381		293,193	22,675
2009-2010											
Summer 2009	1,766	16,619	9.4	2,567	14,393	5.6	1,567	8,805	5.6	39,817	3,483
Fall 2009	5,784	85,052	14.7	3,838	40,609	10.6	1,878	10,531	5.6	136,192	10,309
Spring 2010	5,000	75,042	15.0	4,078	42,292	10.4	1,748	9,838	5.6	127,172	9,622
Total		176,713			97,294			29,174		303,181	23,414
2010-2011											
Summer 2010	1,864	17,668	9.5	2,666	14,966	5.6	1,296	7,411	5.7	40,045	3,461
Fall 2010	5,636	84,024	14.9	4,071	41,753	10.3	1,576	9,181	5.8	134,958	10,213
Spring 2011	4,815	74,145	15.4	4,261	42,089	9.9	1,475	8,803	6.0	125,037	9,451
Total		175,837			98,808			25,395		300,040	23,125
2011-2012											
Summer 2011	1,831	18,778	10.3	2,852	15,131	5.3	1,190	6,858	5.8	40,767	3,502
Fall 2011	5,795	84,167	14.5	4,234	44,491	10.5	1,617	9,888	6.1	138,546	10,575
Spring 2012	4,855	73,918	15.2	4,433	44,902	10.1	1,645	10,295	6.3	129,115	9,820
Total		176,863			104,524			27,041		308,428	23,898

*FTE for all years represents the most current definition set by the Board of Regents (Total full-time undergraduate students taking 12 or more hours + total full-time graduate students taking 9 or more hours) + (Total part-time undergraduate credit hours/12 + total part-time graduate credit hours/9)

Source: Office of Institutional Research and Planning

Total FTE* for Undergraduate and Graduate Students (FY 2006 - 2012)

Academic Years	Undergraduate	Graduate	Total FTE
2005-2006			
Summer 2005	1,822	968	2,790
Fall 2005	7,761	1,146	8,907
Spring 2006	7,055	1,066	8,121
Total	16,638	3,180	19,818
2006-2007			
Summer 2006	1,807	900	2,707
Fall 2006	7,875	1,067	8,942
Spring 2007	7,298	1,072	8,370
Total	16,980	3,039	20,019
2007-2008			
Summer 2007	2,031	945	2,976
Fall 2007	8,260	1,202	9,462
Spring 2008	7,673	1,275	8,948
Total	17,964	3,422	21,386
2008-2009			
Summer 2008	2,282	1,130	3,412
Fall 2008	8,650	1,339	9,989
Spring 2009	8,000	1,274	9,274
Total	18,932	3,743	22,675
2009-2010			
Summer 2009	2,453	1,030	3,483
Fall 2009	9,022	1,287	10,309
Spring 2010	8,412	1,210	9,622
Total	19,887	3,527	23,414
2010-2011			
Summer 2010	2,589	872	3,461
Fall 2010	9,085	1,128	10,213
Spring 2011	8,390	1,061	9,451
Total	20,064	3,061	23,125
2011-2012			
Summer 2011	2,710	792	3,502
Fall 2011	9,382	1,193	10,575
Spring 2012	8,614	1,206	9,820
Total	20,707	3,191	23,898

*FTE for all years represents the most current definition set by the Board of Regents (Total full-time undergraduate students taking 12 or more hours + total full-time graduate students taking 9 or more hours) + (Total part-time undergraduate credit hours/12 + total part-time graduate credit hours/9)

Source: Office of Institutional Research and Planning

Student Credit Hour by Level (FY 2006 - 2012) College of Arts and Humanities*

<i>Academic Years</i>	<i>Lower Level</i>	<i>Upper Level</i>	<i>Graduate Level</i>	<i>Total</i>
2005-2006				
Summer 2005	4,297	1,228	332	5,857
Fall 2005	24,073	4,253	495	28,821
Spring 2006	20,580	4,910	402	25,892
<i>Total</i>	<i>48,950</i>	<i>10,391</i>	<i>1,229</i>	<i>60,570</i>
2006-2007				
Summer 2006	3,992	1,396	180	5,568
Fall 2006	23,710	4,607	425	28,742
Spring 2007	21,639	5,160	448	27,247
<i>Total</i>	<i>49,341</i>	<i>11,163</i>	<i>1,053</i>	<i>61,557</i>
2007-2008				
Summer 2007	4,896	1,406	294	6,596
Fall 2007	24,907	5,003	475	30,385
Spring 2008	24,774	5,313	513	30,600
<i>Total</i>	<i>54,577</i>	<i>11,722</i>	<i>1,282</i>	<i>67,581</i>
2008-2009				
Summer 2008	4,965	1,658	293	6,916
Fall 2008	27,703	4,998	500	33,201
Spring 2009	25,486	5,208	491	31,185
<i>Total</i>	<i>58,154</i>	<i>11,864</i>	<i>1,284</i>	<i>71,302</i>
2009-2010				
Summer 2009	5,497	1,334	248	7,079
Fall 2009	29,595	4,822	551	34,968
Spring 2010	26,133	5,203	531	31,867
<i>Total</i>	<i>61,225</i>	<i>11,359</i>	<i>1,330</i>	<i>73,914</i>
2010-2011				
Summer 2010	5,555	1,714	250	7,519
Fall 2010	29,252	5,004	592	34,848
Spring 2011	26,572	5,103	533	32,208
<i>Total</i>	<i>61,379</i>	<i>11,821</i>	<i>1,375</i>	<i>74,575</i>
2011-2012				
Summer 2011	5,550	1,745	243	7,538
Fall 2011	29,552	5,657	493	35,702
Spring 2012	25,960	5,536	551	32,047
<i>Total</i>	<i>61,062</i>	<i>12,938</i>	<i>1,287</i>	<i>75,287</i>

*The College of Arts and Sciences was reorganized to form the Colleges of Arts and Humanities, Science and Mathematics, and Social Sciences in spring 2011.

Note: Data from previous years were revised to reflect the current reorganizational structure.

Source: Office of Institutional Research and Planning

Student Credit Hour by Level (FY 2006 - 2012) College of Education

Academic Years	Lower Level*	Upper Level	Graduate Level	Total
2005-2006				
Summer 2005	1,307	872	6,438	8,617
Fall 2005	3,946	8,563	5,995	18,504
Spring 2006	3,971	8,339	5,895	18,205
Total	9,224	17,774	18,328	45,326
2006-2007				
Summer 2006	1,064	779	6,228	8,071
Fall 2006	4,130	8,178	5,732	18,040
Spring 2007	3,963	7,679	5,869	17,511
Total	9,157	16,636	17,829	43,622
2007-2008				
Summer 2007	1,119	1,135	6,680	8,934
Fall 2007	3,993	8,548	6,982	19,523
Spring 2008	3,759	8,158	7,549	19,466
Total	8,871	17,841	21,211	47,923
2008-2009				
Summer 2008	1,299	1,303	8,205	10,807
Fall 2008	4,127	8,810	7,822	20,759
Spring 2009	4,179	9,403	6,820	20,402
Total	9,605	19,516	22,847	51,968
2009-2010				
Summer 2009	1,645	1,703	6,948	10,296
Fall 2009	4,374	10,051	6,811	21,236
Spring 2010	4,071	9,902	6,231	20,204
Total	10,090	21,656	19,990	51,736
2010-2011				
Summer 2010	1,411	1,855	5,716	8,982
Fall 2010	4,754	10,630	5,830	21,214
Spring 2011	4,034	10,345	5,593	19,972
Total	10,199	22,830	17,139	50,168
2011-2012				
Summer 2011	1,385	1,611	5,438	8,434
Fall 2011	4,011	10,796	6,370	21,177
Spring 2012	3,923	10,522	6,535	20,980
Total	9,319	22,929	18,343	50,591

*Lower level courses were revised to include XIDS and learning support reading courses.

Source: Office of Institutional Research and Planning

Student Credit Hour by Level (FY 2006 - 2012) College of Science and Mathematics*

Academic Years	Lower Level	Upper Level	Graduate Level	Total
2005-2006				
Summer 2005	3,387	957	318	4,662
Fall 2005	24,849	3,658	377	28,884
Spring 2006	22,405	4,189	364	26,958
Total	50,641	8,804	1,059	60,504
2006-2007				
Summer 2006	3,887	927	317	5,131
Fall 2006	26,446	4,303	389	31,138
Spring 2007	23,838	4,498	417	28,753
Total	54,171	9,728	1,123	65,022
2007-2008				
Summer 2007	4,071	1,089	235	5,395
Fall 2007	27,902	4,468	496	32,866
Spring 2008	24,304	4,499	470	29,273
Total	56,277	10,056	1,201	67,534
2008-2009				
Summer 2008	5,093	1,070	278	6,441
Fall 2008	27,817	5,246	458	33,521
Spring 2009	25,840	5,400	499	31,739
Total	58,750	11,716	1,235	71,701
2009-2010				
Summer 2009	5,555	1,294	290	7,139
Fall 2009	28,592	5,612	549	34,753
Spring 2010	25,567	5,988	514	32,069
Total	59,714	12,894	1,353	73,961
2010-2011				
Summer 2010	6,146	1,619	202	7,967
Fall 2010	28,322	5,322	449	34,093
Spring 2011	25,122	5,731	498	31,351
Total	59,590	12,672	1,149	73,411
2011-2012				
Summer 2011	6,978	1,480	268	8,726
Fall 2011	28,981	6,094	476	35,551
Spring 2012	25,540	6,165	570	32,275
Total	61,499	13,739	1,314	76,552

*The College of Arts and Sciences was reorganized to form the Colleges of Arts and Humanities, Science and Mathematics, and Social Sciences in spring 2011.

Note: Data from previous years were revised to reflect the current reorganizational structure.

Source: Office of Institutional Research and Planning

Student Credit Hour by Level (FY 2006 - 2012) College of Social Sciences*

Academic Years	Lower Level	Upper Level	Graduate Level	Total
2005-2006				
Summer 2005	1,769	2,992	322	5,083
Fall 2005	14,536	5,925	1,022	21,483
Spring 2006	9,952	6,220	918	17,090
Total	26,257	15,137	2,262	43,656
2006-2007				
Summer 2006	1,472	2,870	233	4,575
Fall 2006	14,438	6,259	858	21,555
Spring 2007	11,430	6,518	883	18,831
Total	27,340	15,647	1,974	44,961
2007-2008				
Summer 2007	2,016	2,712	249	4,977
Fall 2007	14,605	6,911	838	22,354
Spring 2008	12,161	6,781	827	19,769
Total	28,782	16,404	1,914	47,100
2008-2009				
Summer 2008	1,953	2,535	346	4,834
Fall 2008	15,976	6,188	844	23,008
Spring 2009	11,106	6,712	909	18,727
Total	29,035	15,435	2,099	46,569
2009-2010				
Summer 2009	2,132	2,594	276	5,002
Fall 2009	14,392	6,761	1,058	22,211
Spring 2010	12,427	7,681	1,007	21,115
Total	28,951	17,036	2,341	48,328
2010-2011				
Summer 2010	2,689	2,691	184	5,564
Fall 2010	13,851	7,305	1,072	22,228
Spring 2011	12,859	7,301	1,025	21,185
Total	29,399	17,297	2,281	48,977
2011-2012				
Summer 2011	3,015	3,447	201	6,663
Fall 2011	14,266	7,751	1,247	23,264
Spring 2012	12,682	9,056	1,237	22,975
Total	29,963	20,254	2,685	52,902

*The College of Arts and Sciences was reorganized to form the Colleges of Arts and Humanities, Science and Mathematics, and Social Sciences in spring 2011.

Note: Data from previous years were revised to reflect the current reorganizational structure.

Source: Office of Institutional Research and Planning

Student Credit Hour by Level (FY 2006 - 2012) Richards College of Business

Academic Years	Lower Level	Upper Level	Graduate Level	Total
2005-2006				
Summer 2005	1,419	4,955	680	7,054
Fall 2005	4,655	8,712	750	14,117
Spring 2006	5,043	8,413	682	14,138
Total	11,117	22,080	2,112	35,309
2006-2007				
Summer 2006	1,359	4,435	538	6,332
Fall 2006	4,725	8,237	616	13,578
Spring 2007	4,737	8,596	699	14,032
Total	10,821	21,268	1,853	33,942
2007-2008				
Summer 2007	1,632	4,743	643	7,018
Fall 2007	4,827	8,723	785	14,335
Spring 2008	5,205	8,989	1,130	15,324
Total	11,664	22,455	2,558	36,677
2008-2009				
Summer 2008	1,886	5,919	819	8,624
Fall 2008	5,663	9,272	1,237	16,172
Spring 2009	5,422	9,982	1,478	16,882
Total	12,971	25,173	3,534	41,678
2009-2010				
Summer 2009	1,526	6,148	1,035	8,709
Fall 2009	5,516	10,420	1,317	17,253
Spring 2010	5,418	10,350	1,390	17,158
Total	12,460	26,918	3,742	43,120
2010-2011				
Summer 2010	1,418	5,703	1,059	8,180
Fall 2010	5,366	10,105	1,077	16,548
Spring 2011	4,924	10,234	1,001	16,159
Total	11,708	26,042	3,137	40,887
2011-2012				
Summer 2011	1,754	5,447	708	7,909
Fall 2011	5,540	10,644	828	17,012
Spring 2012	5,225	10,256	1,042	16,523
Total	12,519	26,347	2,578	41,444

*Academic years 2009 and 2010 data were revised to include XIDS credit hours.

Source: Office of Institutional Research and Planning

Student Credit Hour by Level (FY 2006 - 2012) School of Nursing*

Academic Years	Lower Level	Upper Level	Graduate Level	Total
2005-2006				
Summer 2005	243	222	2	467
Fall 2005		1,852	161	2,013
Spring 2006		1,830	164	1,994
Total	243	3,904	327	4,474
2006-2007				
Summer 2006	219	486		705
Fall 2006	42	1,955	178	2,175
Spring 2007		2,076	123	2,199
Total	261	4,517	301	5,079
2007-2008				
Summer 2007	243	604		847
Fall 2007		2,448	169	2,617
Spring 2008		2,352	103	2,455
Total	243	5,404	272	5,919
2008-2009				
Summer 2008	333	777		1,110
Fall 2008		2,752	217	2,969
Spring 2009		2,728	165	2,893
Total	333	6,257	382	6,972
2009-2010				
Summer 2009		1,320	8	1,328
Fall 2009	336	2,943	245	3,524
Spring 2010		3,168	165	3,333
Total	336	7,431	418	8,185
2010-2011				
Summer 2010		1,384		1,384
Fall 2010	360	3,387	161	3,908
Spring 2011		3,375	153	3,528
Total	360	8,146	314	8,820
2011-2012				
Summer 2011		1,401		1,401
Fall 2011	385	3,549	474	4,408
Spring 2012		3,367	360	3,727
Total	385	8,317	834	9,536

*The Department of Nursing in the College of Arts and Sciences became the School of Nursing in fall 2008.

Source: Office of Institutional Research and Planning

Student Credit Hour by Level (FY 2006 - 2012) Newnan Center

Academic Years	Lower Level	Upper Level	Graduate Level	Total
2005-2006				
Summer 2005	87	90	1,254	1,431
Fall 2005	771	145	1,080	1,996
Spring 2006	693	232	1,068	1,993
Total	1,551	467	3,402	5,420
2006-2007				
Summer 2006	126	342	1,473	1,941
Fall 2006	768	358	906	2,032
Spring 2007	834	596	882	2,312
Total	1,728	1,296	3,261	6,285
2007-2008				
Summer 2007	132	462	987	1,581
Fall 2007	858	678	1,095	2,631
Spring 2008	863	716	1,293	2,872
Total	1,853	1,856	3,375	7,084
2008-2009				
Summer 2008	276	642	1,452	2,370
Fall 2008	1,038	1,227	1,719	3,984
Spring 2009	765	1,234	1,485	3,484
Total	2,079	3,103	4,656	9,838
2009-2010				
Summer 2009	477	793	849	2,119
Fall 2009	1,077	1,871	573	3,521
Spring 2010	880	1,431	672	2,983
Total	2,434	4,095	2,094	8,623
2010-2011				
Summer 2010	572	812	768	2,152
Fall 2010	1,090	1,894	582	3,566
Spring 2011	842	1,604	603	3,049
Total	2,504	4,310	1,953	8,767
2011-2012				
Summer 2011	588	920	444	1,952
Fall 2011	1,457	2,149	312	3,918
Spring 2012	1,089	1,781	276	3,146
Total	3,134	4,850	1,032	9,016

Source: Office of Institutional Research and Planning

Distance and Distributed Education Center

<http://uwgonline.westga.edu/>

Distributed Education is the term used to describe alternative learning environments whereby faculty draw on appropriate technology to provide instruction outside of the traditional classroom. The distributed model can be used in combination with traditional classroom-based courses or it can be used to create distance education courses, in which most learning occurs independent of time and/or place. In the University System of Georgia, if more than 50 percent of instruction in a course is delivered via distance technologies, it is classified as a Distance Education course.

Through its Distance and Distributed Education Center, the University offers credit classes to students at times and locations outside of the traditional classroom. The University of West Georgia was one of the first institutions in the University System of Georgia to offer full or partial online credit courses. The courses utilize the internet to deliver materials, assignments, facilitate discussion, and other appropriate interactions. Distance or Distributed credit courses are delivered fully or partially online through two-way live videoconferencing or through a combination of technologies.

A primary function of the Distance and Distributed Education Center is to provide support services and training for faculty and students participating in these courses. The Center also provides opportunities for collaboration and research for those who manage and administer Distance and Distributed Education programs throughout the nation through its online academic journal, its online non-credit certificate program, and its annual conference. For more information about Distance or Distributed Education, visit the Honors House, telephone 678-839-6248, or visit the University website.

Source: UWG Undergraduate Catalog 2011-2012

Unduplicated Headcount and Total Credit Hours Enrolled in Online Courses by Method of Delivery Fall 2007-2011

Online Course Delivery Mode	Fall 2007		Fall 2008		Fall 2009		Fall 2010		Fall 2011	
	Head Count	Credit Hours	Head Count	Credit Hours	Head Count	Credit Hours	Head Count	Credit Hours	Head Count	Credit Hours
G - eCore	512	2,114	488	2,184	585	2,899	750	3,503	606	2,728
D - 51-94% Distance	2,106	6,551	2,008	7,103	1,732	6,091	1,939	6,841	1,757	6,314
N - 95% or more Distance	623	1,764	2,051	6,365	2,532	8,452	2,706	9,754	3,436	14,269
Unduplicated Total	2,928	10,429	4,073	15,652	4,189	17,442	4,611	20,098	4,900	23,311

Note: e-Core means electronic core curriculum courses which enable the University System of Georgia students to complete the first two years of their college courses entirely online, except for occasional proctored exams.

G - designates e-Core courses.

D - designates courses in which 51-94% of the delivery mode is online.

N - designates courses in which 95% or more of the delivery mode is online.

Source: Office of Institutional Research and Planning

Continuing Education

<http://www.westga.edu/conted/>

The Department of Continuing Education and Public Services has emerged as the extension of the traditional on-campus learning process. Non-credit classes are developed and offered to citizens of the University community at convenient locations and with flexible schedules to accommodate a wide variety of participants.

The mission of Continuing Education is to identify and provide non-credit educational opportunities that will enhance the quality of life for local citizens and provide training support to business and industry that will serve as a catalyst for economic development.

The CEU is defined as ten contact hours of participation in a qualified continuing education program. The CEU is recognized as the national standard for measuring an individual's participation in a non-credit program. Programs qualifying for CEU credit are referred to as Category I. Category I activities are designed to enhance occupational skills, and individual permanent records as transcripts are maintained. Courses that are designed primarily for personal enrichment and are social, cultural, or recreational in nature are referred to as Category II courses. No permanent individual records or transcripts are maintained for Category II courses.

Continuing Education Programs Fiscal Years 2003-2011

<i>Fiscal Year</i>	<i>Programs</i>	<i>Participants</i>	<i>CEUs</i>
2003	635	16,048	13,606
2004	488	15,573	8,262
2005	332	4,403	6,478
2006	226	2,589	2,617
2007	266	2,909	2,945
2008	260	2,261	2,689
2009	250	2,816	2,594
2010	242	2,255	2,742
2011	191	2,553	2,476

Note: Numbers include categories I and II

Source: *Continuing Education*

Off-Campus Programs

The Board of Regents approved and established a West Georgia satellite campus in Newnan, Georgia in August 1988. The Center currently offers degree and non-degree programs.

Approved by the Board of Regents August 2002, as a cooperative effort between Georgia Highlands College and the University of West Georgia, the External Degree Program services students in the Floyd County area who wish to continue formal education beyond the associate degree.

Off Campus Profile Fall 2011

Off Campus Sites	# of Courses	# of Students	Credit Hours		
			Undergraduate	Graduate	Total
Newnan Resident Center	44	568	3,606	312	3,918
Middle Georgia	2	22	0	88	88
North Georgia	18	113	975	105	1,080
Atlanta Area	5	54	0	282	282

Note: Table does not include distance courses (N) taught 95 percent or more online.
Source: Off-Campus Course Report

Retention and Graduation Rates of Fall First-Time Full-Time Freshman Students

		Entered Fall 2002	Entered Fall 2003	Entered Fall 2004	Entered Fall 2005	Entered Fall 2006	Entered Fall 2007	Entered Fall 2008	Entered Fall 2009	Entered Fall 2010
First Year	N=	1,625	1,728	1,701	1,653	1,700	1,793	2,007	1,909	1,848
Second Year	Fall	1,127	1,240	1,203	1,163	1,238	1,345	1,471	1,397	1,346
		69.35%	71.76%	70.72%	70.36%	72.82%	75.01%	73.29%	73.18%	72.84%
Third Year	Fall	813	920	879	921	917	1,022	1,126	1,100	
		50.03%	53.24%	51.68%	55.72%	53.94%	57.00%	56.10%	57.62%	
Fourth Year	Fall	691	811	751	809	808	932	1014		
		42.52%	46.93%	44.15%	48.94%	47.53%	51.98%	50.52%		
Fifth Year	Fall	471	544	524	563	489	587			
		28.98%	31.48%	30.81%	34.06%	28.76%	32.74%			
Sixth Year	Fall	192	225	228	235	201				
		11.82%	13.02%	13.40%	14.22%	11.82%				
Graduation	N=	177	208	198	207	248	298			
Rate	4 yr	10.89%	12.04%	11.64%	12.52%	14.59%	16.62%			
	N=	417	507	474	492	533				
	5 yr	25.66%	29.34%	27.87%	29.76%	31.35%				
	N=	513	627	587	632					
	6 yr	31.57%	36.28%	34.51%	38.23%					

Note: Graduation Rates updated as of the end of summer 2011.

Each entering class includes all entering freshmen enrolled full time whose first term is the fall indicated or the previous summer.

Source: Office of Institutional Research and Planning

Student Financial Aid Fiscal Years 2008 - 2011

The Office of Financial Aid coordinates financial assistance for nearly seventy-two percent of West Georgia's students. Office staff determines eligibility for aid awarded by the University and record aid received by students from other sources, such as the University of

West Georgia Foundation, corporations, and individuals. The Office coordinates all student financial aid awards and reports all aid awarded to students attending the University to the Board of Regents, federal government, and University officials.

Undergraduate	2007-2008		2008-2009		2009-2010		2010-2011	
	No. of Awards*	Amount	No. of Awards*	Amount	No. of Awards*	Amount	No. of Awards*	Amount
Loans								
Perkins	253	264,122	392	323,021	327	315,249	201	242,603
Ford Direct Stafford	3,543	21,520,651	4,134	27,974,105	4,428	32,133,794	4,849	35,709,111
PLUS	269	2,010,249	363	2,845,601	328	2,961,893	393	3,323,700
UWG Emergency	403	261,852	403	265,405	400	262,197	455	299,663
Private	397	2,701,602	356	1,926,199	175	1,183,849	170	1,307,468
**HOPE Promise	226	578,250	189	499,500	3	1,130	0	0
**Service Cancelable	68	229,225	0	170,437	0	0	0	0
<i>Total</i>	<i>5,159</i>	<i>27,565,951</i>	<i>5,837</i>	<i>34,004,268</i>	<i>5,661</i>	<i>36,858,112</i>	<i>6,068</i>	<i>40,882,545</i>
Scholarships								
Institutional	454	1,669,408	543	1,716,975	437	1,614,893	439	1,576,803
Private	166	672,178	193	926,411	252	736,963	283	660,832
State	60	40,501	24	36,788	12	40,616	11	28,732
<i>Total</i>	<i>680</i>	<i>2,382,087</i>	<i>760</i>	<i>2,680,174</i>	<i>701</i>	<i>2,392,472</i>	<i>733</i>	<i>2,266,367</i>
Grants								
Hope	1,953	11,289,044	2,294	13,944,390	2,331	14,614,345	2,341	16,136,906
Pell	2,105	8,316,602	2,638	13,158,820	2,891	15,846,773	3,761	21,011,951
SEOG	205	152,150	274	218,972	319	241,093	271	192,350
Vocational Rehabilitation	139	314,483	155	602,614	146	388,701	122	379,001
LEAP	18	28,947	27	28,450	38	35,217	33	31,297
***ACG	15	212,850	101	53,858	209	726,538	254	868,676
***SMART	26	102,275	61	156,953	70	228,922	110	316,447
<i>Total</i>	<i>4,461</i>	<i>20,416,351</i>	<i>5,550</i>	<i>28,164,057</i>	<i>6,004</i>	<i>32,081,589</i>	<i>6,892</i>	<i>38,936,628</i>
Federal Programs								
Work Study	276	315,445	129	150,348	231	381,080	198	309,169
Americorps	3	6,455	4	7,783	2	7,507	2	10,276
<i>Total</i>	<i>279</i>	<i>321,900</i>	<i>133</i>	<i>158,131</i>	<i>233</i>	<i>388,587</i>	<i>200</i>	<i>319,445</i>
Grand Total	10,579	50,686,289	12,280	65,006,630	12,599	71,720,760	13,893	82,404,985

*Number of awards may represent duplicated headcount because some student received more than one type of financial aid.

**Previous years HOPE Promise and Service Cancelable were included in Stafford Loans.

***ACG and SMART grants began fall 2006.

Note: Fiscal year term (summer, fall, and spring) numbers for 2008 through 2010 were adjusted because of a reporting error.

Source: Financial Aid

Student Financial Aid Fiscal Years 2008 - 2011

Graduate	2007-2008		2008-2009		2009-2010		2010-2011	
	No. of Awards*	Amount	No. of Awards*	Amount	No. of Awards*	Amount	No. of Awards*	Amount
Loans								
Perkins	3	3,500	5	3,833	4	2,834	13	7,500
Ford Direct Stafford	719	7,106,472	908	9,046,806	869	9,827,991	839	10,251,166
GRAD PLUS (new)	1	6,323	1	8,491	2	19,308	7	40,155
Emergency	87	57,580	85	53,090	69	43,321	63	46,550
Private	7	28,626	22	124,846	8	54,675	7	58,109
HOPE Teacher	145	233,250	169	135,392	98	124,250	0	0
Loans Total	962	7,435,751	1,190	9,372,458	1,050	10,072,379	929	10,403,480
Scholarships								
Institutional	40	74,535	27	52,678	20	40,102	27	5,116
Private	7	28,626	10	18,357	12	13,615	18	19,923
Scholarships Total	47	103,161	37	71,035	32	53,717	45	25,039
Federal Programs								
Work Study	0	0	1	2,316	3	5,624	1	951
Americorps	0	0	1	4,812	2	3,503	2	6,729
Federal Total	0	0	2	7,128	5	9,127	3	7,680
Grand Total	1,009	7,538,912	1,229	9,450,621	1,087	10,135,223	977	10,436,199

*Number of awards may represent duplicated headcount because some student received more than one type of financial aid.

Note: Fiscal year term (summer, fall, and spring) numbers for 2008 through 2010 were adjusted because of a reporting error.

Fiscal Year	Loans	Scholarships	Work Study	Total
2008	7,435,751	103,161	0	7,538,912
2009	9,372,458	71,035	7,128	9,450,621
2010	10,072,379	53,717	9,127	10,135,223
2011	10,403,480	25,039	7,680	10,436,199

Number of Students Served*				
Fiscal Year	Loans	Scholarships	Work Study	Total
2008	962	47	0	1,009
2009	1,190	37	2	1,229
2010	150	32	5	1,087
2011	929	45	3	977

* Unduplicated headcount within categories
Source: Office of Financial Aid

UWG Student Financial Aid Fiscal Years 2002 - 2011

Fiscal Year	Loans	HOPE Scholarships	Other Scholarships	Grants	Work Study	Total
2002	16,292,531	8,869,893	1,405,583	4,824,621	413,632	31,806,260
2003	19,097,179	9,501,835	1,498,035	5,670,785	367,045	36,134,879
2004	22,158,711	10,755,456	1,443,160	6,195,410	338,265	40,891,002
2005	24,438,516	11,368,110	1,617,131	6,184,011	357,340	43,965,108
2006	26,779,221	10,814,832	1,639,918	6,300,158	322,800	45,856,929
2007	23,523,562	10,999,142	1,869,232	7,214,380	294,769	43,901,085
2008	27,565,951	11,289,044	2,382,087	9,127,307	321,900	50,686,289
2009	34,004,268	13,944,390	2,680,174	14,219,667	158,131	65,006,630
2010	36,858,112	14,614,345	2,392,472	17,078,543	388,587	71,322,059
2011	40,882,545	16,136,906	2,266,367	22,420,721	319,445	82,025,984

Number of Students Served*

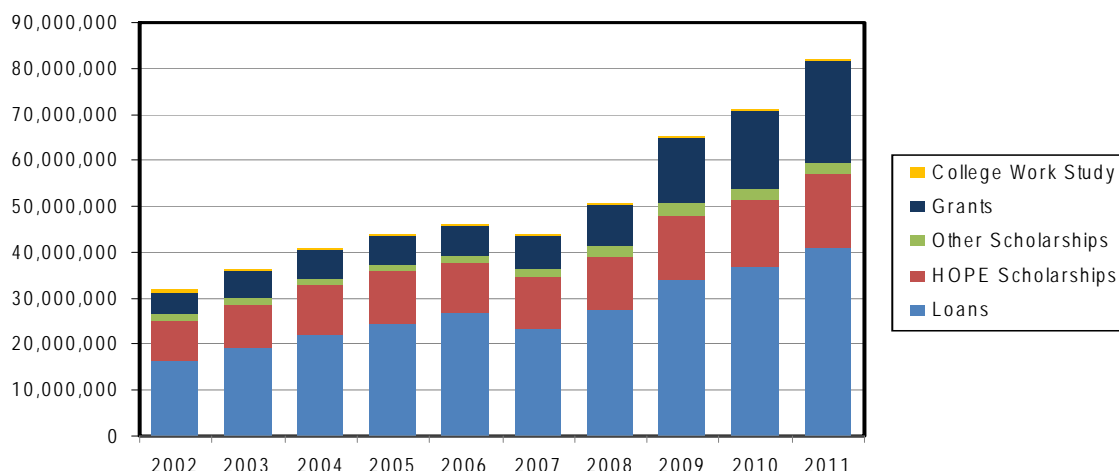
Fiscal Year	Loans	HOPE Scholarships	Other Scholarships	Grants	Work Study	Total
2002	6,031	3,965	925	2,016	383	13,320
2003	6,880	3,968	881	2,222	330	14,281
2004	7,253	4,135	833	2,863	328	15,412
2005	6,851	4,618	876	2,443	314	15,102
2006	9,280	4,453	901	2,831	279	17,744
2007	7,670	4,453	901	2,831	279	17,744
2008	5,159	1,953	680	2,508	279	10,579
2009	5,837	2,294	760	3,256	133	12,280
2010	5,661	2,331	701	3,527	233	12,453
2011	6,068	2,341	733	4,429	200	13,771

*Unduplicated headcount within categories of aid.

Shaded areas indicate reporting error by Financial Aid. Headcount was duplicated 2000 through 2002.

Note: Due to reporting error, 2008-2010 numbers were adjusted to reflect fiscal year terms (summer, fall, and spring).

Student Financial Aid Growth



Source: Financial Aid

Degrees



Degrees and Majors Offered Fall 2011

Bachelor of Arts

Art
Biology
Chemistry **
English **
Foreign Languages and Literatures*
Geography
Global Studies
History **
International Economic Affairs
Mass Communications
Mathematics
Philosophy
Political Science
Psychology
Theatre

Bachelor of Business Administration

Accounting
Economics
Finance
Management
Management Information Systems
Marketing
Real Estate

Bachelor of Fine Arts

Art*

Bachelor of Music

Composition
Music Education *
Music, Elective Studies in Business
Performance
Performance, Emphasis in Jazz Studies
Performance, Emphasis in Piano Pedagogy

Bachelor of Science

Anthropology
Biology **
Computer Science
Criminology
Earth Science **
Economics **
Environmental Science
Environmental Studies
Geography
Geology
Mathematics **
Physics **
Political Science
Sociology
Sport Management

Bachelor of Science in Chemistry

Bachelor of Science in Education

Early Childhood Education (P-5)
Physical Education (P-12)
Speech-Language Pathology (P-12)
Special Education (P-12)

Bachelor of Science in Nursing

Master of Arts

Criminology
English
History
Psychology
Sociology

Master of Arts in Teaching (collaborative)

Secondary Education and Teaching
Mathematics
Science

Master of Business Administration

**Certification obtainable in grades P-12*

***Certification obtainable in grades 6-12*

Degrees and Majors Offered

Master of Education

Business Education
Early Childhood Education
Media
Middle Grades Education
Professional Counseling
Reading Education
Secondary Education
 English
 Mathematics
 Science
 Social Studies
Special Education
 General Curriculum
 Adapted Curriculum
Speech-Language Pathology

Master of Music

Music Education
Performance

Master of Professional Accounting

Master of Public Administration

Master of Science

Applied Computer Science
Biology
Mathematics

Master of Science in Nursing

Master of Science in Urban and Regional Planning

Specialist in Education

Early Childhood Education
Educational Leadership
Media
Professional Counseling and Supervision
Secondary Education

Doctor of Education

Professional Counseling and Supervision
School Improvement

Doctor of Psychology

Individual, Organizational, and Community
Transformation

Post-Master's Certificate

Health Systems Leadership
Nursing Education

Non-Degree Initial Certification Programs in Education

Art (P-12)
Biology (6-12)
Broad Field Science (6-12)
Business Education (6-12)
Chemistry (6-12)
Early Childhood Education (P-5)
Earth/Space Science (6-12)
English (6-12)
French (P-12)
History (6-12)
Mathematics (6-12)
Media Specialist (P-12)
Middle Grades Education (4-8)
Music (P-12)
Physics (6-12)
Political Science (6-12)
School Counseling (P-12)
Spanish (P-12)

Non-Degree Add-On Certification Programs and Endorsements in Education

Birth through Five Endorsement
Educational Leadership
ESOL Endorsement
Media Specialist
Reading Specialist

**Certification obtainable in grades P-12*

***Certification obtainable in grades 6-12*

Source: UWG Undergraduate Catalog 2011-2012

UWG Degrees Conferred Fiscal Years 2002 – 2011

<i>Fiscal Years</i>	2002	2003	2004	2005	2006	2007	2008	2009	2010	2011
Bachelor of Arts										
Anthropology	2	4	11	4	4	5	9	9	10	11
Art	3	-	2	1	2	2	4	4	2	1
Biology	2	-	-	-	-	-	-	-	-	-
Chemistry	6	6	11	9	9	11	11	7	8	10
Chemistry/Secondary Education		-	-	1	3	2	-	2	1	-
English	33	31	19	30	45	31	35	27	36	36
Foreign Languages										5
French	2	2	2	3	5	1	2	2	-	-
Geography	1	2	1	1	-	-	3	1	2	2
German			1	-	-	-	1	4	3	1
Global Studies	-	1	1	-	2	1	2	1	-	2
History	16	16	19	17	28	32	33	38	34	36
International Economic Affairs	3	2	8	11	2	3	3	4	5	5
Mass Communications	28	29	37	38	49	40	47	40	48	46
Mathematics	-	-	-	-	1	1	-	-	-	-
Philosophy	5	4	1	5	5	4	4	8	14	9
Political Science	2	4	8	9	4	3	8	5	9	5
Psychology	72	86	78	73	64	88	75	92	82	89
Sociology	9	2	1	1	-	-	-	-	-	-
Spanish	6	3	-	6	6	6	12	6	7	4
Speech and Theatre Arts	5	1	2	-	-	-	-	-	-	-
Theatre			2	6	5	2	4	8	7	8
<i>Total</i>	195	193	204	215	234	232	253	258	268	270
Bachelor of Business Administration										
Accounting	26	36	45	35	46	40	38	58	68	76
Technology Support Systems	4	4	3	4	2	1	-	-	1	-
Business Information Systems	57	54	40	43	-	-	-	-	-	-
Economics	3	2	2	5	8	4	4	2	5	5
Finance	32	39	28	33	33	17	37	37	42	41
Management	72	76	87	86	103	104	88	120	118	126
Management Information Systems					31	24	16	14	25	14
Marketing	57	61	87	71	91	84	81	87	100	90
Real Estate	5	4	11	19	16	17	19	14	10	4
<i>Total</i>	256	276	303	296	330	291	283	332	369	356
Bachelor of Fine Arts	22	19	29	36	35	30	26	37	38	31
Bachelor of Science in Chemistry	7	8	4	4	10	11	15	13	12	11

Degrees for double majors are reported by first major only.

Degrees Conferred (continued)

<i>Fiscal Years</i>	<i>2002</i>	<i>2003</i>	<i>2004</i>	<i>2005</i>	<i>2006</i>	<i>2007</i>	<i>2008</i>	<i>2009</i>	<i>2010</i>	<i>2011</i>
Bachelor of Science in Education										
Business Education	3	4	8	3	6	7	5	3	7	7
Early Childhood Education	109	102	129	164	160	160	191	191	199	190
Middle Grades Education	27	17	19	25	29	21	19	37	17	23
Physical Education	17	13	27	27	19	14	5	21	26	27
Secondary Science Education	2	1	-	-	-	-	-	-	-	-
Secondary Social Science Education	12	4	2	3	-	-	-	-	-	-
Special Education	18	20	29	17	22	25	4	-	6	18
Speech Language Pathology	18	23	12	17	12	17	18	15	24	23
<i>Total</i>	<i>206</i>	<i>184</i>	<i>226</i>	<i>256</i>	<i>248</i>	<i>244</i>	<i>242</i>	<i>267</i>	<i>279</i>	<i>288</i>
Bachelor of Music										
Elective Studies in Business-Music	1	-	-	1	-	-	-	-	-	-
Music Education	2	3	5	4	6	6	5	8	9	10
Performance	2	2	4	2	3	1	1	3	5	1
Theory and Composition	1	-	1	-	-	-	-	-	-	-
<i>Total</i>	<i>6</i>	<i>5</i>	<i>10</i>	<i>7</i>	<i>9</i>	<i>7</i>	<i>6</i>	<i>11</i>	<i>14</i>	<i>11</i>
Bachelor of Science										
Biology	30	26	56	41	44	65	70	76	85	76
Biology/Secondary Education		-	1	-	2	4	-	1	5	5
Computer Science	18	15	8	14	7	7	11	5	12	22
Criminal Justice	23	18	-	-	-	-	-	-	-	-
Criminology	-	-	38	35	36	28	41	43	42	48
Earth Science-Secondary Education									1	-
Economics	5	4	12	7	14	7	16	11	17	17
Economics-Secondary Education			2	-	-	-	-	1	1	2
Environmental Science	2	-	3	1	1	3	1	-	-	3
Environmental Studies	-	2	-	2	3	3	1	2	4	3
Geography	1	3	3	1	2	2	7	3	1	10
Geology	11	8	2	5	8	5	11	8	7	16
Mathematics	5	7	9	16	7	15	12	13	13	16
Physics	5	7	5	2	4	3	7	6	4	3
Physics/Secondary Education		-	-	-	-	-	-	1	-	-
Political Science	13	13	23	27	34	26	31	29	26	33
Sociology	44	34	47	66	49	41	55	60	44	43
Sports Management									17	24
<i>Total</i>	<i>157</i>	<i>137</i>	<i>209</i>	<i>217</i>	<i>211</i>	<i>209</i>	<i>263</i>	<i>259</i>	<i>279</i>	<i>321</i>
Bachelor of Science in Earth Science	-	-	-	1	1	2	1	1	-	-
Bachelor Science in Nursing	58	53	51	65	66	69	107	104	130	179
Bachelor of Science in Recreation	24	23	34	39	39	33	25	49	18	-

Degrees for double majors are reported by first major only.

Degrees Conferred (continued)

Fiscal Years	2002	2003	2004	2005	2006	2007	2008	2009	2010	2011
Master of Arts										
Criminology									4	3
English	9	2	5	10	5	3	6	5	4	7
Gerontology	9	3	3	2	-	1	-	1	-	-
History	6	6	8	8	7	8	6	10	7	10
Psychology	24	24	30	28	25	16	25	14	11	17
Sociology	5	3	4	2	4	1	6	3	4	1
<i>Total</i>	53	38	50	50	41	29	43	33	30	38
Master of Business Administration	20	29	42	37	30	23	21	49	82	87
Master of Professional Accounting	10	7	6	5	3	6	4	10	18	19
Master of Education										
Administration and Supervision	54	67	35	84	43	24	10	24	9	-
Art Education	2	1	1	2	5	4	2	3	1	-
Business Education	16	17	18	31	27	28	26	14	17	20
Early Childhood Education	47	54	48	33	41	26	40	59	44	77
Educational Leadership									1	12
Guidance and Counseling	29	40	28	55	41	43	40	44	23	-
Media	24	29	41	59	48	39	39	40	53	47
Middle Grades Education	31	37	25	11	22	18	16	12	13	11
Physical Education	9	1	9	9	1	4	4	7	1	2
Professional Counseling									20	39
Reading Instruction	18	6	13	19	12	11	12	7	11	11
Secondary Education	34	22	18	16	14	17	11	13	11	10
Spanish Language Teacher Education							2	-	2	3
Special Education	38	24	23	47	36	23	29	24	40	39
Speech Lanaguage Pathology	31	32	17	5	18	14	11	18	20	9
<i>Total</i>	333	330	276	371	308	251	242	265	266	280
Master of Music										
Music Education	1	2	2	-	3	1	2	3	2	-
Performance	2	3	-	3	-	-	-	-	2	3
<i>Total</i>	3	5	2	3	3	1	2	3	4	3
Master of Public Administration	9	8	12	10	5	8	12	10	9	14
Master of Science										
Applied Computer Science			1	4	9	7	6	2	9	10
Biology	5	5	9	4	7	3	6	4	10	4
Teaching and Applied Mathematics										1
<i>Total</i>	5	5	10	8	16	10	12	6	19	15

Degrees for double majors are reported by first major only.

Degrees Conferred (continued)

<i>Fiscal Years</i>	2002	2003	2004	2005	2006	2007	2008	2009	2010	2011
*Master of Science in Rural and Small Town Planning	-	1	2	1	4	-	-	1	1	-
Master of Science in Nursing			10	5	5	11	10	11	9	10
Specialist in Education										
Administration and Supervision	19	19	55	46	36	48	46	37	16	-
Business Education	-	6	5	5	1	4	4	4	3	5
Early Childhood Education	41	10	10	3	6	7	12	20	16	22
Educational Leadership									53	24
Guidance and Counseling	11	10	12	9	13	9	12	14	12	-
Media	19	12	23	32	34	41	31	45	62	52
Middle Grades Education	20	9	13	6	7	4	6	8	10	3
Physical Education	2	7	1	2	-	2	-	4	-	-
Professional Counseling									3	5
Professional Counseling and Supervision										2
Secondary Education	6	10	5	6	8	12	5	5	4	7
Special Education	17	13	15	14	17	11	17	20	58	20
<i>Total</i>	135	96	139	123	122	138	133	157	237	140
Post-Baccalaureate Certificate										
Geographic Information Systems									1	5
Museum Studies						1	5	7	8	3
Public History						-	3	2	-	2
Public Management						3	-	2	5	-
<i>Total</i>						4	8	11	14	10
Doctorate in Education (Ed.D.)										
School Improvement			1	2	8	6	8	8	7	13
Total Number of Degrees by Level										
Bachelor	930	898	1,070	1,136	1,183	1,128	1,221	1,331	1,407	1,467
Post-Baccalaureate Certificate						4	8	11	14	10
Education Specialist	135	96	139	123	122	138	133	157	237	140
Master	433	423	410	490	415	339	346	388	438	466
Doctorate in Education			1	2	8	6	8	8	7	13
Total	1,498	1,417	1,620	1,751	1,728	1,615	1,716	1,895	2,103	2,096

Degrees for double majors are reported by first major only.

Source: Office of Institutional Research and Planning

Faculty



Faculty Profile Institutional Total Fall 2011

Rank	Teaching Faculty		Administrators		Librarians	Total	Percent
	Full-time	Part-time	General ¹	Academic ²			
Professor	64	10	3	37	2	116	19.5%
Associate Professor	91	1	2	10		104	17.5%
Assistant Professor	135	16		1	5	157	26.4%
Lecturer	41					41	7.0%
Instructor	61	109			6	176	29.6%
College/School							
Richards College of Business	45	9	2	6		62	10.4%
College of Education	74	56	2	8		140	23.6%
College of Arts and Humanities	119	31		10		160	27.0%
College of Science and Mathematics	76	15		9		100	16.8%
College of Social Sciences	56	16	1	10		83	14.0%
Library				2		2	0.3%
School of Nursing	22	9		3	13	47	7.9%
Highest Degree Earned							
Doctorate	269	36	5	44		354	59.6%
Master's or EDS	122	96		4	13	235	39.6%
Professional Bachelor	1	4				5	0.8%
Tenure Status							
Tenured	156		4	46	2	208	35.0%
Tenure-Track	127			2	5	134	22.6%
Non-Tenure Track	109	136	1		6	252	42.4%
Race							
Black or African American	26	11		3		40	6.7%
American Indian or Alaskan Native	1			2		3	0.5%
Asian	35	2	1	3		41	6.9%
Native Hawaiian or Pacific Islander							0.0%
Hispanic	9	1				10	1.7%
White	321	122	4	40	13	500	84.2%
Gender							
Female	206	92	2	16	10	326	54.9%
Male	186	44	3	32	3	268	45.1%
Total Faculty	392	136	5	48	13	594	100.0%

¹General Administrators include the President, Provost and Vice President for Academic Affairs, Associate Vice Presidents for Academic Affairs and Deputy Provost.

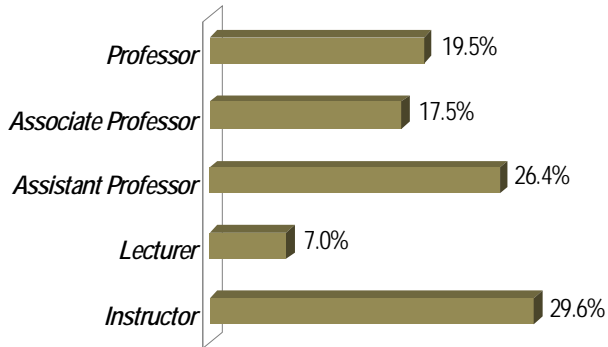
²Academic Administrators include Deans, Associate Deans, Department Chairs, and Academic Directors.

Note: Limited term faculty are included in the full-time faculty category.

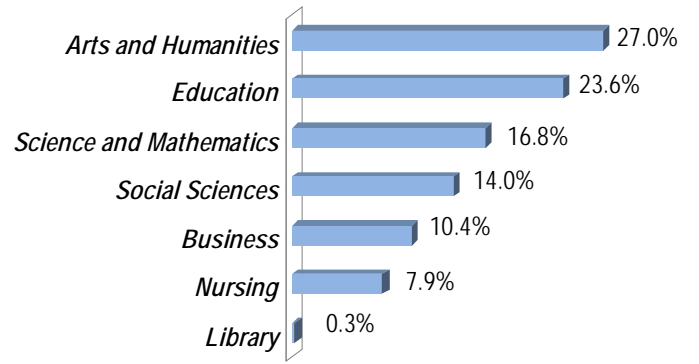
Source: Academic Affairs

Composition of Faculty Fall 2011

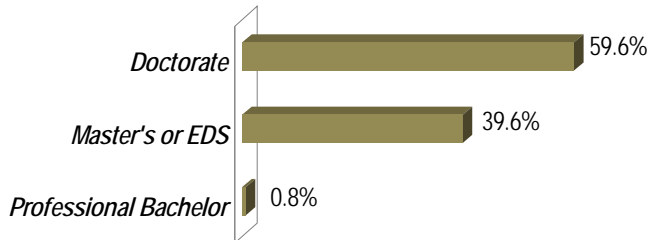
Rank



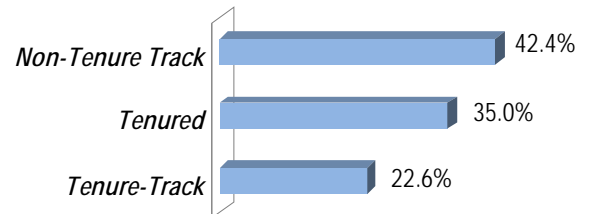
College/School



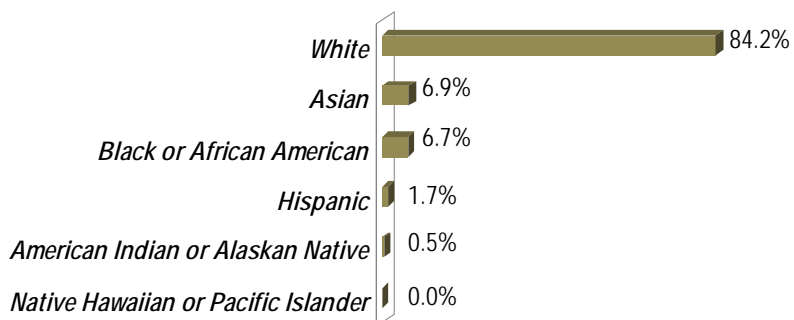
Highest Degree Earned



Tenure Status



Race



Gender



Faculty Profile

College of Arts and Humanities

Fall 2011

Rank	Teaching Faculty		Administrators	Total	Percent
	Full-time	Part-time	Academic ¹		
Professor	16		7	23	14.4%
Associate Professor	28		3	31	19.4%
Assistant Professor	34	1		35	21.9%
Lecturer	13			13	8.0%
Instructor	28	30		58	36.3%
Highest Degree Earned					
Doctorate	61	1	8	70	43.8%
Master's or EDS	58	29	2	89	55.6%
Professional Bachelor		1		1	0.6%
Tenure Status					
Tenured	44		10	54	33.8%
Tenure-Track	50			50	31.2%
Non-Tenure Track	25	31		56	35.0%
Race					
Black or African American	3	3		6	3.8%
American Indian or Alaskan Native	1			1	0.6%
Asian	2			2	1.2%
Native Hawaiian or Pacific Islander					0.0%
Hispanic	3			3	1.9%
White	110	28	10	148	92.5%
Gender					
Female	64	19	3	86	53.7%
Male	55	12	7	74	46.3%
Total Faculty	119	31	10	160	100.0%

¹Academic Administrators include Deans, Associate Deans, Department Chairs, and Academic Directors.

Note: Limited term faculty are included in the full-time faculty category.

Source: Academic Affairs

Faculty Profile

College of Education

Fall 2011

Rank	Teaching Faculty		Administrators		Total	Percent
	Full-time	Part-time	General ¹	Academic ²		
Professor	8	3	1	4	16	11.4%
Associate Professor	21	1	1	4	27	19.3%
Assistant Professor	29	14			43	30.7%
Lecturer	6				6	4.3%
Instructor	10	38			48	34.3%
Highest Degree Earned						
Doctorate	58	22	2	8	90	64.3%
Master's or EDS	16	31			47	33.6%
Professional Bachelor		3			3	2.1%
Tenure Status						
Tenured	30	0	2	7	39	27.8%
Tenure-Track	25	0		1	26	18.6%
Non-Tenure Track	19	56			75	53.6%
Race						
Black or African American	11	4			15	10.7%
American Indian or Alaskan Native				2	2	1.4%
Asian	6				6	4.3%
Native Hawaiian or Pacific Islander						0.0%
Hispanic						0.0%
White	57	52	2	6	117	83.6%
Gender						
Female	49	45	1	4	99	70.7%
Male	25	11	1	4	41	29.3%
Total Faculty	74	56	2	8	140	100.0%

¹General Administrators include Provost and Vice President for Academic Affairs and Associate Vice President for Academic Affairs.

²Academic Administrators include Deans, Associate Deans, Department Chairs, and Academic Directors.

Note: Limited term faculty are included in the full-time faculty category.

Source: *Academic Affairs*

Faculty Profile

College of Science and Mathematics

Fall 2011

Rank	Teaching Faculty		Administrators	Total	Percent
	Full-time	Part-time	Academic ¹		
Professor	14	3	9	26	26.0%
Associate Professor	23			23	23.0%
Assistant Professor	22			22	22.0%
Lecturer	8			8	8.0%
Instructor	9	12		21	21.0%
Highest Degree Earned					
Doctorate	64	4	9	77	77.0%
Master's or EDS	12	11		23	23.0%
Professional Bachelor					0.0%
Tenure Status					
Tenured	37		9	46	46.0%
Tenure-Track	21			21	21.0%
Non-Tenure Track	18	15		33	33.0%
Race					
Black or African American			1	1	1.0%
American Indian or Alaskan Native					0.0%
Asian	17		2	19	19.0%
Native Hawaiian or Pacific Islander					0.0%
Hispanic	1			1	1.0%
White	58	15	6	79	79.0%
Gender					
Female	28	8		36	36.0%
Male	48	7	9	64	64.0%
Total Faculty	76	15	9	100	100.0%

¹Academic Administrators include Deans, Associate Deans, Department Chairs, and Academic Directors.

Note: Limited term faculty are included in the full-time faculty category.

Source: Academic Affairs

Faculty Profile

College of Social Sciences

Fall 2011

Rank	Teaching Faculty		Administrators		Total	Percent
	Full-time	Part-time	General ¹	Academic ²		
Professor	14		1	7	22	26.5%
Associate Professor	8			2	10	12.1%
Assistant Professor	20			1	21	25.3%
Lecturer	4				4	4.8%
Instructor	10	16			26	31.3%
Highest Degree Earned						
Doctorate	46	2	1	10	59	71.1%
Master's or EDS	9	14			23	27.7%
Professional Bachelor	1				1	1.2%
Tenure Status						
Tenured	22		1	9	32	38.6%
Tenure-Track	18			1	19	22.8%
Non-Tenure Track	16	16			32	38.6%
Race						
Black or African American	7	3		2	12	14.5%
American Indian or Alaskan Native						0.0%
Asian	3	1			4	4.8%
Native Hawaiian or Pacific Islander						0.0%
Hispanic	2	1			3	3.6%
Caucasian/White	44	11	1	8	64	77.1%
Gender						
Female	24	7	1	4	36	43.4%
Male	32	9		6	47	56.6%
Total Faculty	56	16	1	10	83	100.0%

¹General Administrator includes Associate Vice President for Research and Sponsored Projects.

²Academic Administrators include Deans, Associate Deans, Department Chairs, and Academic Directors.

Note: Limited term faculty are included in the full-time faculty category.

Source: Academic Affairs

Faculty Profile

Richards College of Business

Fall 2011

Rank	Teaching Faculty		Administrators		Total	Percent
	Full-time	Part-time	General ¹	Academic ²		
Professor	11	2	1	6	20	32.0%
Associate Professor	10		1		11	18.0%
Assistant Professor	11				11	18.0%
Lecturer	10				10	16.0%
Instructor	3	7			10	16.0%
Highest Degree Earned						
Doctorate	36	4	2	6	48	77.4%
Master's or EDS	9	5			14	22.6%
Professional Bachelor						0.0%
Tenure Status						
Tenured	20		1	6	27	43.6%
Tenure-Track	10		1		11	17.7%
Non-Tenure Track	15	9			24	38.7%
Race						
Black or African American	3				3	4.9%
American Indian or Alaskan Native						0.0%
Asian	7	1	1	1	10	16.0%
Native Hawaiian or Pacific Islander						0.0%
Hispanic	3				3	4.9%
White	32	8	1	5	46	74.2%
Gender						
Female	19	4		1	24	38.7%
Male	26	5	2	5	38	61.3%
Total Faculty	45	9	2	6	62	100.0%

¹General Administrators include the President and Deputy Provost.

²Academic Administrators include Deans, Associate Deans, Department Chairs, and Academic Directors.

Note: Limited term faculty are included in the full-time faculty category.

Source: Academic Affairs

Faculty Profile School of Nursing Fall 2011

Rank	Teaching Faculty		Administrators	Total	Percent
	Full-time	Part-time	Academic ¹		
Professor	1	2	3	6	17.7%
Associate Professor	1			1	2.9%
Assistant Professor	19	1		20	58.8%
Lecturer					0.0%
Instructor	1	6		7	20.6%
Highest Degree Earned					
Doctorate	4	3	3	10	29.4%
Master's or EDS	18	6		24	70.6%
Professional Bachelor					0.0%
Tenure Status					
Tenured	3		3	6	17.7%
Tenure-Track	3			3	8.8%
Non-Tenure Track		9		25	73.5%
Race					
Black or African American	2	1		3	8.8%
American Indian or Alaskan Native					0.0%
Asian					0.0%
Native Hawaiian or Pacific Islander					0.0%
Hispanic					0.0%
White	20	8	3	31	91.2%
Gender					
Female	22	9	3	34	100.0%
Male					0.0%
Total Faculty	22	9	3	34	100.0%

¹Academic Administrators include Deans, Associate Deans, Department Chairs, and Academic Directors.

Note: Limited term faculty are included in the full-time faculty category.

Source: Academic Affairs

Faculty Profile

Irvine S. Ingram Library

Fall 2011

Rank	Administrators		Total	Percent
	Academic ¹	Librarians		
Professor	1	2	3	20.0%
Associate Professor	1		1	6.7%
Assistant Professor		5	5	33.3%
Lecturer				0.0%
Instructor		6	6	40.0%
Highest Degree Earned				
Doctorate				0.0%
Master's or EDS	2	13	15	100.0%
Professional Bachelor				0.0%
Tenure Status				
Tenured	2	2	4	26.7%
Tenure-Track		5	5	33.3%
Non-Tenure Track		6	6	40.0%
Race				
Black or African American				0.0%
American Indian or Alaskan Native				0.0%
Asian				0.0%
Native Hawaiian or Pacific Islander				0.0%
Hispanic				0.0%
White	2	13	15	100.0%
Gender				
Female	1	10	11	73.3%
Male	1	3	4	26.7%
Total Faculty	2	13	15	100.0%

¹Academic Administrators include Deans, Associate Deans, Department Chairs, and Academic Directors.

Note: Limited term faculty are included in the full-time faculty category.

Source: Academic Affairs

Average Salary by Employee Category Fiscal Years 2005-2012

Faculty	FY 2005		FY 2006		FY 2007		FY 2008	
	Number	Average	Number	Average	Number	Average	Number	Average
Professor	53	70,558	56	72,937	60	73,374	65	77,201
Associate Professor	86	52,853	85	55,406	82	57,552	82	58,814
Assistant Professor	151	46,045	142	48,286	134	52,320	148	51,659
Instructor	54	33,878	61	35,477	78	35,452	64	37,424
Lecturer	18	45,618	20	43,496	24	44,758	26	44,598
All Faculty	362	\$49,790	364	\$51,120	378	\$52,691	385	\$53,939

Staff	FY 2005		FY 2006		FY 2007		FY 2008	
Administrative	283	42,794	303	44,231	331	48,861	248	47,512
Clerical	146	22,523	139	23,403	135	23,489	190	26,254
Maintenance	130	22,838	139	23,339	119	23,131	154	26,215
All Staff	559	\$29,385	581	\$30,324	585	\$31,827	592	\$35,128

Faculty	FY 2009		FY 2010		FY 2011		FY 2012	
	Number	Average	Number	Average	Number	Average	Number	Average
Professor	59	76,830	62	81,923	99	86,019	107	87,236
Associate Professor	86	59,871	94	60,656	98	63,389	101	63,327
Assistant Professor	145	52,511	157	51,791	144	51,961	141	53,550
Instructor	76	38,137	73	38,543	68	38,318	67	37,858
Lecturer	30	44,288	30	44,381	39	42,749	40	43,543
All Faculty	396	\$54,327	416	\$55,459	448	\$56,487	456	\$57,103

Staff	FY 2009		FY 2010		FY 2011		FY 2012	
Administrative	315	49,139	320	47,636	316	57,061	383	54,032
Clerical	187	26,633	187	26,994	173	28,460	210	28,367
Maintenance	149	26,795	155	27,865	125	26,958	143	26,365
All Staff	651	\$37,560	662	\$34,165	614	\$42,966	736	\$41,334

Note: Faculty totals include all full-time teaching faculty, librarians, and other (f-t) faculty with temporary appointment.

Sources: Academic Affairs and the Office of Human Resources

Research and Sponsored Projects



Office of Research and Sponsored Projects

<http://www.westga.edu/oso/>

History

The University of West Georgia established a central office to administer research grants and other sponsored projects in 1967. University reorganization in 1973 placed responsibility for sponsored projects, grants, contracts, budgeting of funds from sources external to the University, and institutional research in the Office of Instructional and Research Services. By 1980, that unit became the Division of Budget and Research Services, reporting to the President of the University. In Fiscal Year 1996, Sponsored Operations was placed under the Vice President for Academic Affairs and was renamed the Office of Research and Sponsored Projects (ORSP) in 2011.

Services Rendered

The Office aids and supports faculty, staff, and student efforts to secure funds from sources external to the University in support of instructional, research, and service programs. The compliance specialists accomplish this through Pre-Award and Post-Award by: 1) matching faculty/staff/student interests and needs with appropriate funding sources; 2) routing requests for proposals (RFPs) to specific faculty/department/program personnel; 3) assisting faculty/staff/students in developing applications and proposals; 4) negotiating and receiving all awards; 5) overseeing financial management of all awards; 6) ensuring compliance with expenditure regulations; 7) overseeing time and effort reporting; 8) tracking expenditures, prepare invoices and financial reports; 9) overseeing all grant and contract compliance functions including the Institutional Review Board (IRB), Institutional Animal Care and Use Committee (IACUC), and Institutional Biosafety Committee (IBC); and, 10) providing staff development through grants preparation/administration workshops and seminars.

The ORSP staff provide the day-to-day services necessary to support all program activities funded from sources external to UWG and provide support for the administration of the internal Faculty Research Grant program.

The Associate Vice President for Research and Sponsored Projects recommends all external contracts, proposals, and grants, and monitors institutional performance under such agreements.

UWG secures grants, gifts, and contracts from federal, state, and local government agencies, corporations, and private foundations. This external funding and other revenue enable the University to fulfill its official mission to emphasize creative teaching, encourage research, and promote the development of human resources through educational programs.

Goals

The Research and Sponsored Projects Office established the following strategic goals:

1. To promote and support the instructional, research, and public service missions of UWG.
2. To encourage University units and individual faculty, staff, and student efforts in seeking funds from external agencies in support of instructional, research, and public service projects.
3. To monitor the internal Faculty Research Grant Program in compliance with established institutional policies and procedures.
4. To assist faculty, staff, and students in efforts to comply with federal and state statutes, state of Georgia laws, and University System policies.
5. To aid faculty, staff, and students in securing increased support for University research and other sponsored activities from federal, state, corporate, and private foundation sources.

Source: Office of Research and Sponsored Projects

Sponsored Operations Assessment As of June 30 of Each Fiscal Year

<i>Fiscal Year</i>	<i>Number of Proposals Submitted</i>	<i>Number of Proposals Funded</i>	<i>Amount Requested</i>	<i>Amount Awarded</i>
2003	62	43	8,207,448	1,932,727
2004	51	44	4,638,100	2,255,747
2005	66	47	4,649,668	2,056,983
2006	48	38	2,681,068	1,909,258
2007	74	60	4,144,252	2,396,349
2008	74	59	4,027,924	2,097,703
2009	75	46	7,411,645	2,494,825
2010	75	53	7,152,437	2,422,145
2011	82	40	6,521,438	3,176,203

Note: Amounts exclude awards for student financial aid.

Source: Office of Research and Sponsored Projects

Faculty Research Grants Fiscal Year 2011

In addition to resources acquired from external sources, the University budgets state-allocated funds to assist faculty research efforts through the Faculty Research Grant Program. Established in 1967, the Faculty Research Grant Program provides limited seed funding for approved faculty research projects.

College of Arts and Humanities

Dr. Keith Bohannon – History

We are going to be wiped off the earth: The Collapse of Confederate Resistance in the Western Theater of the U.S. Civil War
\$1,400

Dr. Patrick Erben - English and Philosophy

Preparing the Francis Daniel Pastorius Reader for Publication
\$1,815

Dr. Jonathan Goldstein - History

Teaching the Holocaust in China on the College Level
\$2,000

Dr. Rebecca Harrison - English and Philosophy

Captive Women, Cunning Texts: Confederate Daughters and the 'Trick-Tongue' of Captivity
\$2,000

Dr. Daniel Williams - History

Archival Research on Abortion Politics Before Roe v. Wade
\$1,700

Each fiscal year, faculty members submit formal proposals to the Learning Resources Committee of the Faculty Senate requesting University support. Committee members evaluate proposals and make funding recommendations for full Senate review. The Faculty Senate approves proposals and suggests levels of funding to the Associate Vice President for Research, who subsequently allocates funds to the recipients through the Office of Research and Sponsored Projects.

In compliance with these procedures, the Faculty Research Grant funds for this Fiscal Year were awarded as follows:

College of Social Science

Dr. Jeannette Diaz-Laplante - Psychology

Community Asset Mapping in the Service of Children's Health and Wellness: Building our Community as a Healthy Community
\$1,465

Dr. JunHee-Jung Jun - Political Science and Planning

Social Capital in South Korea's Heterogeneous Communities
\$2,000

Dr. Richard Lemke - Sociology and Criminology

That's Not My Neighborhood-Examining Characteristics of Anderson's "Code of the Street" Using Both Micro and Macro Level Data
\$2,000

Dr. Soo Jung Moon - Mass Communications

Making News on North Korea: How Journalists Collect and Verify Information
\$500

College of Education

Dr. Lara Willox - Early Learning and Childhood Education

Studying Together: Collaborative Research in Field Placements
\$1,800

College of Science and Mathematics

Dr. Barbara Ballentine - Biology

Investigating Mechanisms that Allow Natural Populations to Colonize Urban Landscapes
\$2,400

Dr. Lewis Baumstark - Computer Science

A Prototyping Platform for Wearable Computing
\$1,000

Dr. Christopher Berg - Geosciences

Garnet Sm-Nd Geochronology: Connecting Metamorphism, Mineral Growth, and Microstructural Fabric Development at Garnet Hill, Georgia
\$1,870

Dr. David Bush - Geosciences

Potential Future Land Loss of Small Islands of Puerto Rico
\$1,840

Dr. Bradley Deline - Geosciences

Characterizing Early Paleozoic Echinoderm Morphology
\$2,000

Dr. Landewatte DeSilva - Physics

Quantum Dots Embedded Polymer Photonic Devices
\$1,958

Dr. Megumi Fujita - Chemistry

Synthetic Optimization of a Newly Designed Ion-Pair Receptor
\$2,000

Dr. Anne Gaquere-Parker - Chemistry

Synthesis of New Pyrrilidinofullerenes
\$2,000

Dr. Vicki Geisler - Chemistry

Analysis of Substituent Effects on the Activity of Phenolic Antioxidants
\$1,800

Dr. John Hansen - Chemistry

Folding Studies on Metal Substituted Azurins
\$1,947

Dr. Curtis Hollabaugh - Geosciences

The Occurrence and Growth of Splendid Euhedral Crystals in Pegmatites and Topaz Rhyolite
\$2,000

Dr. William Kenyon - Biology

Differing Strategies for Cellulose Degradation within the Genus
\$2,600

Dr. Farooq Khan - Chemistry

Selective Binding of Metal Ions to Antibiotics Valinomycin and Beauvericin: A Computational and Mass Spectrometric
\$1,995

Dr. Leos Kral - Biology

Characterization of the Adaptive Evolution of the Centromere-Specific Histone h3-like Protein (CENP-A) Gene in Percids
\$2,000

Dr. Mautusi Mitra - Biology

Employing Functional Genomics to Study Oxygenic Photosynthesis in the Unicellular Eukaryotic Model Green Alga *Chlamydomonas Reinhardtii*
\$2,000

Dr. Sara Molesworth-Kenyon - Biology

Chemokine Expression in the Herpes Simplex Virus Type-1 Infected Human Cornea
\$2,600

Dr. Michael Orsega - Computer Science

Increasing Student Persistence by Interspersing Additional Brief Problems
\$1,309

Source: Office of Research and Sponsored Projects

Financial Information



Budgeting and Assessment Cycle

The University of West Georgia operates under three major budgets: the Resident Instruction Budget, the Auxiliary Enterprises Budget, and the Student Activities Budget. Each serves a distinct purpose.

The Resident Instruction Budget is funded from state appropriations, student tuition and fees, and dedicated funds received from sources external to the University System of Georgia. Resident Instruction Funds support instruction, research, libraries, the computer center and laboratories, Student Services, the administrative and service offices of West Georgia, a portion of the maintenance of the physical plant, and academic scholarships and fellowships.

The Auxiliary Enterprises Budget is self-supporting and operated on a profit/loss basis. Auxiliary Enterprises generate revenue from residence hall rentals, meal ticket sales, bookstore sales, vending machine sales, student health and athletic fees, parking fees, and parking fines. Auxiliary Enterprises funds support the operation of the residence halls, dining rooms, the University Bookstore, network support, vending machines, bus service, health services, traffic operations, intercollegiate athletics (as of FY 93) and, provide funds necessary to maintain a portion of the University's physical plant.

The Student Activities Budget is funded by student activities fees and the Campus Center Facilities fee. Student Activities funds support various activities including choral and instrumental organizations, art exhibits, debate team, jazz ensemble, Student Activities Council, University game room, Student Government, University publications such as the *West Georgian* and *Eclectic*, and intramural athletics. The Campus Center Facilities fee covers the debt service for the facility in addition to the cost of operating the facility.

In addition to the three budgets, the West Georgia Foundation, Inc., a non-profit corporation dedicated to the advancement of the university, provides funding for scholarships, equipment, and services not funded by state appropriations. The [Alumni Association](#) section of the Fact Book supplies additional information about the West Georgia Foundation.

*By State law the fiscal operation period is the Fiscal Year, beginning July 1 of any year and ending June 30 of the following year.

Reporting

The format for the *Fact Book* shows information as provided in the *University of West Georgia Financial Report*. It accurately reflects the financial position of the University.

All revenue sources and expenses for all fund groups (Resident Instruction, Auxiliary, Student Activities, Sponsored Research, Continuing Education, Indirect Revenue, and Technology Fees) are combined with as much detail as previously provided. Totals for the fiscal year ending June 30, 2010 have been audited. Totals for the year ending June 30, 2011 are actual revenue and expense amounts and are still subject to changes following the State audit. Totals for the current year are original budgeted totals. Total expenditures do not include capitalized amounts such as equipment over \$5,000 and library collections.

Source: Office of Budget Services

University Revenue by Source

	<i>July 1, 2011 Budgeted</i>	<i>June 30, 2011 Actual</i>	<i>June 30, 2010 Actual</i>
Operating Revenue			
Tuition and Fees	\$ 60,594,011	\$ 61,090,670	\$ 54,587,604
Less: Scholarship allowances	\$ (12,170,040)	\$ (18,487,800)	\$ (14,732,554)
Grants and Contracts			
Federal		\$ 1,220,784	\$ 775,997
State		\$ 685,710	\$ 433,535
Other		\$ 935,304	\$ 1,035,649
Sales and Services	\$ 2,548,933	\$ 397,825	\$ 416,216
Rents and Royalties		\$ 31,388	\$ 29,109
Auxiliary			
Residence Halls	\$ 12,492,149	\$ 12,326,124	\$ 11,097,134
Bookstore	\$ 4,704,378	\$ 4,110,748	\$ 4,236,004
Food Services	\$ 7,110,574	\$ 6,655,210	\$ 6,642,481
Parking/Transportation	\$ 1,758,658	\$ 1,461,480	\$ 1,639,450
Health Services	\$ 2,208,053	\$ 2,021,659	\$ 2,043,975
Intercollegiate Athletics	\$ 5,295,816	\$ 5,284,292	\$ 4,677,408
Other Organizations	\$ 1,166,476	\$ 574,028	\$ 455,094
Other	\$ 871,990	\$ 3,137,038	\$ 2,957,601
Total Operating Revenue	<u>\$ 86,580,998</u>	<u>\$ 81,444,460</u>	<u>\$ 76,294,703</u>
Non-Operating Revenue			
State Appropriations	\$ 41,993,105	\$ 42,940,578	\$ 38,474,634
Federal Stimulus - Stabilization Funds			\$ 7,826,638
Grants and Contracts	\$ 21,283,624	\$ 23,710,478	\$ 18,862,951
Gifts		\$ 624,504	\$ 294,460
Investment Income	\$ 200,000	\$ 255,144	\$ 246,080
Other		\$ 176,232	\$ (24,681)
Total Non-operating Revenue	<u>\$ 63,476,729</u>	<u>\$ 67,706,936</u>	<u>\$ 65,680,082</u>
Capital Gifts and Grants			
State		\$ 7,222,761	\$ 3,085,277
Other Capital Gifts and Grants	\$ 1,136,601	\$ 244,018	\$ 2,200,000
Total Capital Gifts and Grants	<u>\$ 1,136,601</u>	<u>\$ 7,466,779</u>	<u>\$ 5,285,277</u>
Total Revenues	<u>\$ 151,194,328</u>	<u>\$ 156,618,175</u>	<u>\$ 147,260,062</u>

Includes all funding sources, internal revenue, special initiative, departmental sales and service, and sponsored operations. Grants and contracts do not include federal tuition scholarships.

Source: Office of Budget Services

University Operating Expenses

July 1, 2011		June 30, 2011
Operating Expenses	Budgeted	Actual
Salaries:		
Faculty	\$ 34,411,102	\$ 32,237,113
Staff	28,699,142	31,312,340
Benefits	20,311,028	18,790,021
Other Personal Services	3,924,856	326,806
Travel	1,208,257	1,037,335
Scholarships and Fellowships	9,262,387	10,822,544
Utilities	1,866,090	3,809,978
Supplies and Other Services	39,486,886	33,722,745
Depreciation/Equipment	10,029,076	10,066,614
Total Operating Expenses	149,198,824	142,125,496
Non-Operating Expenses		
Interest Expense (Capital Assets)		5,776,041
Total Expenses	\$ 149,198,824	\$ 147,901,537
EXPENSES BY CLASSIFICATION		
July 1, 2011		June 30, 2011
Operating Expenses	Budgeted	Actual
Instruction	\$ 50,834,257	\$ 48,943,797
College of Arts & Sciences		
College of Arts & Humanities	7,505,449	8,697,077
College of Science & Mathematics	7,140,018	8,293,706
College of Social Sciences	4,805,716	5,004,180
Richards College of Business	4,904,946	6,024,969
College of Education	7,058,466	7,250,251
School of Nursing	2,393,727	2,513,080
Other Instruction	17,025,935	11,160,534
Research	668,713	1,390,932
Public Service	386,587	732,453
Academic Support	16,270,588	15,503,770
Student Services (Excl Fund 13000)	7,547,859	7,110,355
Student Activities (Fund 13000)	3,708,340	2,774,446
Intramural		154,738
Social & Entertainment Activities	907,030	717,474
Student Government	49,550	34,440
Student Publications	65,550	65,660
Scholarships, Study Abroad	122,975	83,450
Other Programs/Unassigned ¹	2,563,235	1,802,134
Institutional Support	16,678,835	13,404,196
Plant Operations and Maintenance	10,655,022	13,660,864
Safety and Security	1,640,611	1,563,309
Scholarships and Fellowships	8,067,412	9,563,397
Auxiliary Enterprises	32,740,600	27,477,977
Student Housing	11,531,466	9,708,340
Food Services	6,891,290	6,680,904
Stores and Shops	4,618,390	3,878,453
Intercollegiate Athletics	4,207,065	2,907,819
Scholarships, Athletic	1,072,000	1,054,744
Other Service Units	4,420,389	4,302,461
Unallocated Expenses		
Total Operating Expenses	149,198,824	142,125,496
Non-Operating Expenses		
Interest Expense (Capital Assets)		5,776,041
Total Expenses	\$ 149,198,824	\$ 147,901,537

Actual amounts for FY11 and FY10 do not include capitalized expenditures, but do include depreciation. Includes all fund groups: resident instruction, auxiliary, student activities, continuing education, indirect revenue, and technology fees. During FY2011 the College of Arts & Sciences was reorganized as the Colleges of Arts & Humanities, Science & Mathematics, and Social Sciences. Salaries for Graduate Assistants are included in Staff Salaries.

Source: Office of Budget Services

June 30, 2010	
Operating Expenses	Actual
Salaries:	
Faculty	\$ 29,899,269
Staff	29,544,472
Benefits	17,374,138
Other Personal Services	917,560
Travel	876,692
Scholarships and Fellowships	9,510,771
Utilities	3,615,156
Supplies and Other Services	29,032,883
Depreciation/Equipment	9,672,843
Total Operating Expenses	<u>130,443,784</u>
Non-Operating Expenses	
Interest Expense (Capital Assets)	5,058,222
Total Expenses	<u>\$ 135,502,006</u>
EXPENSES BY CLASSIFICATION	
June 30, 2010	
Operating Expenses	Actual
Instruction	\$ 47,692,451
College of Arts & Sciences	22,538,905
College of Arts & Humanities	
College of Science & Mathematics	
College of Social Sciences	
Richards College of Business	6,577,244
College of Education	8,443,708
School of Nursing	2,477,906
Other Instruction	<u>7,654,688</u>
Research	1,223,968
Public Service	473,009
Academic Support	15,447,430
Student Services (Excl Fund 13000)	6,188,491
Student Activities (Fund 13000)	2,535,411
Intramural	151,520
Social & Entertainment Activities	640,762
Student Government	29,109
Student Publications	71,530
Scholarships, Study Abroad	
Other Programs/Unassigned ¹	<u>1,642,490</u>
Institutional Support	11,682,785
Plant Operations and Maintenance	10,431,139
Safety and Security	
Scholarships and Fellowships	8,282,751
Auxiliary Enterprises	26,486,349
Student Housing	9,555,165
Food Services	5,794,501
Stores and Shops	3,921,983
Intercollegiate Athletics	4,128,235
Scholarships, Athletic	
Other Service Units	<u>3,086,465</u>
Unallocated Expenses	
Total Operating Expenses	<u>130,443,784</u>
Non-Operating Expenses	
Interest Expense (Capital Assets)	5,058,222
Total Expenses	<u>\$ 135,502,006</u>

Actual amounts for FY11 and FY10 do not include capitalized expenditures, but do include depreciation. Includes all fund groups: resident instruction, auxiliary, student activities, continuing education, indirect revenue, and technology fees. During FY2011 the College of Arts & Sciences was reorganized as the Colleges of Arts & Humanities, Science & Mathematics, and Social Sciences. Salaries for Graduate Assistants are included in Staff Salaries.
Source: Office of Budget Services

Total Resident Instruction Expenditures Per Full-time Equivalent Student Fiscal Years 2008 – 2012*

<i>Fiscal Year</i>	<i>Resident Instruction Expenditures*</i>	<i>Fall Term FTE Enrollment**</i>	<i>Total Expenditures per FTE Student</i>
2008	\$83,297,659	9,462	\$8,804
2009	\$96,732,567	9,989	\$9,684
2010	\$106,480,246	10,309	\$10,329
2011	\$117,649,114	10,213	\$11,520
2012	\$112,749,884	10,575	\$10,662

* Calculated as Total Operating Expenses per Annual Financial Report less Auxiliary Services and Student Activities.

**FTE for all years represents the current definition set by the Board of Regents (Total full-time undergraduate students taking 12 or more hours + total full-time graduate students taking 9 or more hours) + (total part-time undergraduate credit hours/12 + total part-time graduate credit hours/9).

Distribution of the Student Dollar Fall 2011



1 Tuition	0.71
2 Special Institutional Fee	0.09
3 Facility Fees	0.06
4 Athletic Fee	0.05
5 Health Fee	0.03
6 Student Activity & International Fees	0.02
7 Transportation Fee	0.02
8 Technology Fee	0.02

Source: Office of Budget Services

Condensed Statement of Net Assets Fiscal Years 2010–2011

	FY 2011	FY 2010
Assets:		
Current Assets	\$ 51,003,414	\$ 45,219,847
Capital Assets, net	219,666,634	210,198,861
Other Assets	2,464,825	2,404,998
Total Assets	273,134,873	257,823,706
Liabilities:		
Current Liabilities	19,927,109	18,067,394
Noncurrent Liabilities	116,171,687	111,436,873
Total Liabilities	136,098,796	129,504,267
Net Assets:		
Invested in Capital Assets, net of deb	103,859,942	99,187,844
Restricted - nonexpendable		
Restricted - expendable	2,658,702	2,456,678
Capital Projects		
Unrestricted	30,517,433	26,674,917
Total Net Assets	\$ 137,036,077	\$ 128,319,439

Assets are cash, investments, receivables, prepaid items, inventories, capital equipment, etc.

Liabilities are accounts payable, deposits from others to the University (i.e. deposits for room rentals, breakage, etc.), and payroll deductions.

Source: Office of Budget Services

UWG Foundation Inc., Development and Alumni Relations



University of West Georgia Foundation, Inc.

The University of West Georgia Foundation, Inc. (Foundation), a Georgia charitable corporation, receives and manages private contributions (gifts) made for the benefit of the University of West Georgia. The Foundation is an organization exempt from Federal Income Tax under section 501(c)(3) of the Internal Revenue Code. Gifts to the Foundation are deductible as provided for in section 170 of the Internal Revenue Code. The Foundation encourages both restricted (specific purpose) and unrestricted (general use) gifts from donors.

The Foundation's Board of Trustees is composed of business, professional, community leaders, and officers elected by the Board. The Board establishes and provides oversight of the Foundation's operating financial policies and procedures. In addition, the Foundation is committed to provide for the integrity of original corpus (principal) dollars and assure that all fiduciary commitments made to the it's donors are honored for the life of their agreements. The officers and trustees of the Foundation are committed to a policy of full-disclosure.

The Board of Regents of the University System has recognized that gifts and income from endowments that provide for the private support of system institutions are not taken into account when determining the allocation of state funds to the institution. The Board of Regents recognizes that all of its institutions are dependent, in part, on private funding and encourages all institutions to seek the support of alumni, friends, corporations, and other private organizations.

Source: Office of Development and Alumni Relations

Foundation Officers and Trustees

2012 Foundation Officers

Mrs. Susan O. Fleck, Chairman
Mr. Howard B. (Rocky) Lipham, III '90, Vice Chairman
Mr. J. Thomas (Tommy) Vance, Secretary
Vacant, Executive Director/Treasurer

2011 Trustees

Mr. A. Paul Cadenhead* '44
Mrs. Mary M. Covington '93
Mrs. Cindy Denney '86, '93, '95
Mr. Scott Evans
Dr. Lucille Garmon
Mr. Herb Garrett '68, '71
Mr. James A. Gill*
Mr. Murray D. Gray '55
Mr. Wyche T. (Tee) Green
Mrs. Edith (Edie) F. Haney '89
Mr. Robert G. Harris '86
Mrs. Deirdre Haywood-Rouse
Mr. Cary Ichter '81
Mr. David "Bo" Jackson
Mr. Phillip Kauffman*
Mr. Robert (Bob) E. Lovvorn '53
Mrs. Michelle Morgan '86 '87
Mr. James (Jim) M. Naughton
Mr. Trent North '91
Dr. Ward B. Pafford* (former University President)
Mr. David Parkman '58, '69
Mr. Randall Redding
Mr. K. Alexander (Alex) Roush
Dr. Beheruz N. Sethna (President)
Dr. Greg Slappey
Mr. Floyd W. Smith
Mr. Robert J. (Bob) Stone*
Mr. Tom Upchurch '61
Mr. Timothy I. Warren
Mr. Robert E. White '68
Mrs. Dana J. Wynn '74

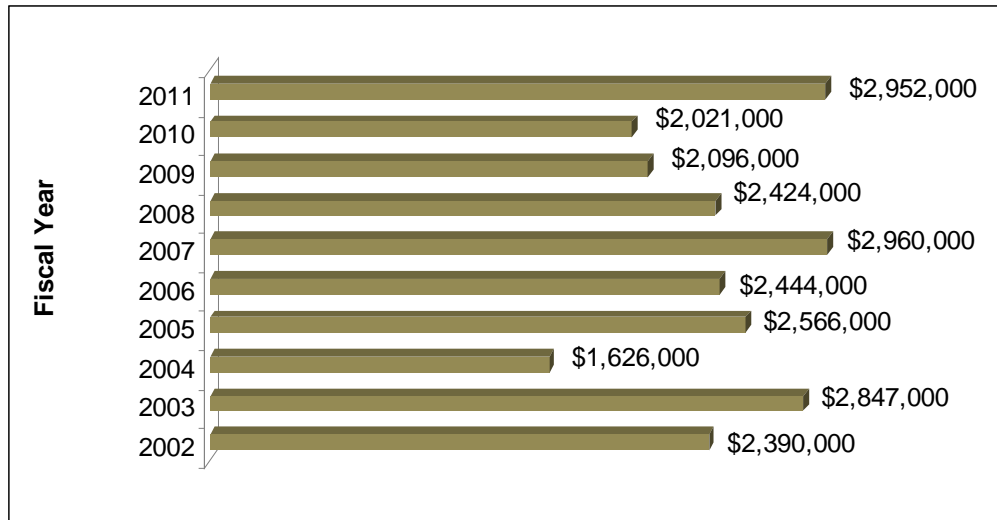
2012 Trustees

Mr. George W. Brooks, Jr. '84
Mr. A. Paul Cadenhead* '44
Mrs. Mary M. Covington '93
Mrs. Cindy Denney '86, '93, '95
Dr. Lucille Garmon
Mr. Herb Garrett '68, '71
Mr. James A. Gill*
Mrs. Edith (Edie) F. Haney '89
Mr. Robert G. Harris '86
Mrs. Deirdre Haywood-Rouse
Mr. David "Bo" Jackson
Mr. Phillip Kauffman*
Mr. R. David Knight '73
Mr. Robert (Bob) E. Lovvorn '53
Mrs. Michelle Morgan '86 '87
Mr. Trent North '91
Mr. David Parkman '58, '69
Mr. Randall Redding
Mr. K. Alexander (Alex) Roush
Dr. Michael Ruffner
Dr. Beheruz N. Sethna (President)
Mr. Floyd W. Smith
Mr. Robert J. (Bob) Stone*
Mr. Tom Upchurch '61
Mr. Timothy I. Warren
Mr. Robert E. White '68
Mrs. Dana J. Wynn '74

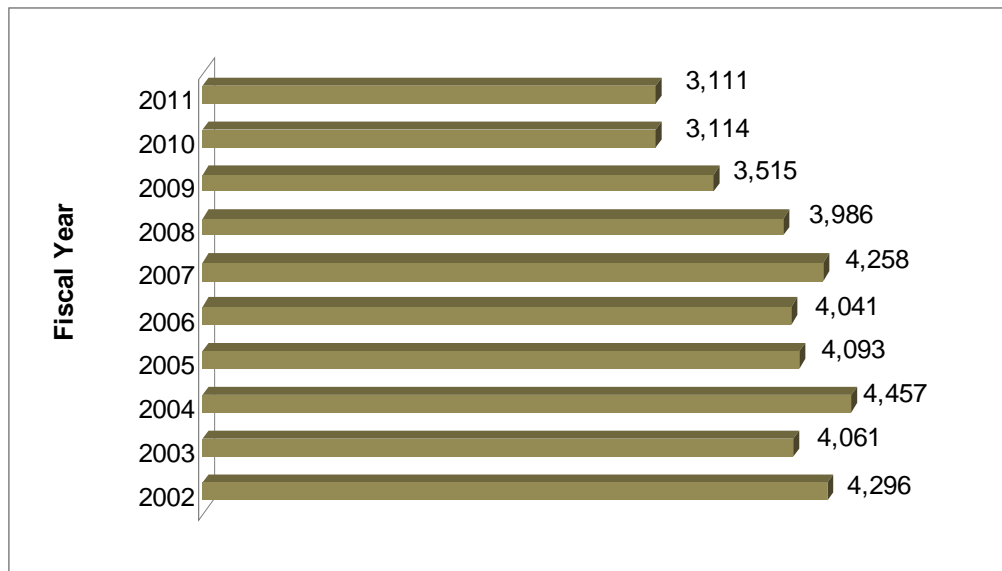
*Lifetime Member

Source: Office of Development and Alumni Relations

Annual Fund Dollars Raised



Number of Annual Fund Donors



Source: University of West Georgia Foundation, Inc.

Scholarships

General Scholarships

A&M Scholarship
Steve Andre Rotary Scholarship
Mack C. Baird Scholarship
Bowdon Sertoma Scholarship
Emory F. & Rosa W. Boyd Scholarship
James E. Boyd Scholarship
L. Wayne Brown Academic Scholarship
Jewell Miles Burson Memorial Scholarship
Business & Professional Women's Scholarship
Elizabeth Plunkett Buttimer Scholarship
Chief Charles "Barry" Carroll Memorial Scholarship
Carrollton Elementary School Scholarship
Carrollton Junior Women's Scholarship
Carrollton Lions Club Scholarship
Carrollton Parent Teacher Organization Scholarship
George Washington Carver High School Descendants Scholarship
Amos & Leona Caswell Scholarship
Betty Reynolds Cobb Scholarship
Brenda Busbin Collins Scholarship
Lerlie & Millard Copeland Scholarship
Davenport-Cadenhead Scholarship Fund
Felton Denney Scholarship
Jacob McGavock Dickinson Scholarship
Benny Drum Memorial Scholarship
Family and Diversity Scholarship
MacGregor Flanders Scholarship
Georgian Bank Scholarship Endowment Fund
Chris Gillespie Memorial Scholarship
Golden Braves Scholarship Endowment Fund
Tabatha & Logan Hancock Memorial Scholarship
Julia Barnes Harlin Memorial Scholarship
Hubert & Naomi Holland Endowment Scholarship
I.S. Ingram Scholarship
Ingram Scholarship Fund of the Forties
Irvine Sullivan & Martha Munro Ingram Scholarship
Collus O. & Eugenia Johnson Scholarship
Col. Frank Jones Kiwanis Scholarship
Kappa Sigma Lambda-Delta Alumni Chapter Endowment

General Scholarships (continued)

Terry C. Kapetanacos Memorial Scholarship
King Packaging Scholarship
Ladies Over 36 Scholarship
Mary Ann Leathers Memorial Scholarship
Thomas R. Luck, Jr. Scholarship
C. Henry Lumpkin Memorial Scholarship
Dr. John Martin Memorial Scholarship
Leon Massey Presidential Scholarship
McCalman Scholarship
Phil McDowell Scholarship Endowment Fund
L.S. Mollette Memorial Scholarship
Morgan Oil Scholarship
Sue Myers Emergency Scholarship
OFS Bright Wave Scholarship Fund
Jennifer Lynn Olson Memorial Scholarship
Elizabeth L. Parker Memorial Scholarship
Merlin O. Powers Memorial Scholarship
Chuck Puckett Family Endowment Scholarship
Alice Huffard Richards Scholarship
Roy Richards, Sr. Memorial Scholarship
Rotary Club of Carrollton Scholarship
Sylvia Shortt Scholarship for International Students
Robert P. Steed Scholarship
Suzanne Lankford Sullivan Scholarship
Alonzo & Clarence Thomas Memorial Scholarship
Henry Sims Varn Scholarship
Joe M. Ward Memorial Scholarship
West Georgia Life Underwriters Scholarship
William J. Wiggins Memorial Scholarship
Sherman & Betty Wilson Memorial Scholarship
Wasdin Scholarship
Wirsing Kiwanis Scholarship Fund

College of Arts and Humanities

General

H.O. Lovvorn Scholarship
Sally Pafford Memorial Scholarship

Scholarships

College of Arts and Humanities (continued)

Department of Art

Betty Andre Memorial Scholarship
Art Endowment
Art Scholarship Endowment
Art Study Award
Bayeux Scholarship Endowment
Cooper Bell Memorial Scholarship
Marianne Bobick Memorial Scholarship
Dorothy & C.J. Colevins Art Award
Gloria Covert Memorial Art Scholarship
David Dugan, Jr. Memorial Art Scholarship
Joyce Entrekinn Harris Scholarship
James & Marie Hingerton Scholarship
P.J. Younglove Hovey Live Art Scholarship
Mittie Brooks Johnson Memorial Scholarship
Bessie Curran Kepp Scholarship
Grace Richards Endowment Scholarship
Roush Family Scholarship
Susan & Alex Roush Scholarship
Helen Hunt Whatley Scholarship
W. Steve Worthy Presidential Scholarship

Department of English and Philosophy

Mary Anne (Sugar) Wilson Goreau DeVillier Memorial Scholarship
Dr. Corliss Hines Edwards, Jr. Memorial Scholarship
Marion L. Fisher Endowed Memorial Scholarship
Kay Magenheimer Award
Mathews English Fund
Dr. James W. Mathews Distinguished Endowed English Scholarship for Graduate Studies
Parkman Family Endowment
Willie Maude Thompson Award
George Walker English Fund
Burdett & Shirley Wantland Philosophy Scholarship

Department of Foreign Languages and Literatures

Marianne Bobick Memorial Scholarship
Jewell Miles Burson Language Award
Pierrette Frickey Award
Sobhi Ghobrial Memorial Scholarship Endowment
Cecilia Lee Scholarship
Dr. Nigel E. Smith Award

Department of History

Robert Ray & Bula Adams Claxton Endowment Scholarship
Cita Cook History Award
Michael Haigwood Goodroe Endowment
W. Cope Goodwin Memorial Scholarship
J. David Griffin Teaching Award
Kennedy History Graduate Award of Excellence
NSDAR American History Award
Casimir Palaski Chapter SAR Scholarship
Elizabeth Parker History Award
Vachel Davis Whatley, Sr. Scholarship

Center for Public History

Joseph R. Johnson Scholarship

Department of Music

Shirley Caffee Boykin Music Scholarship
Annice Whatley Cameron Music Scholarship
Carrollton Presbyterian Church Choir Award
Kelly Drake Memorial Music Scholarship
Vachel V. & Betty Combs Driver Memorial Scholarship
Faculty Music Award
Friends & Patrons of Music Scholarship
P.J. Younglove Hovey Live Art Scholarship
DeVonner J. Ingram Music Scholarship
Kawai American Piano Scholarship
Lit-Mu Award
Lit-Mu Opera
Miriam C. Merrell Scholarship
Mary Lou Munn Award
Mary Lou Munn Memorial Scholarship
Music Miscellaneous
Steve Zachariah Smith Music Scholarship
Sony Music Scholarship
Charles Wadsworth Scholarship
Elizabeth Gellerstedt Wright Memorial Scholarship

Department of Theatre Arts

William Boling, III Scholarship
Encore Theatre Company Scholarship
Friends of Theatre New Talent Award
Mildred Fokes Godard Theatre Arts
Ossie McCord McLarty Scholarship
David Carter Neale Scholarship
P.J. Younglove Hovey Live Art Scholarship

Scholarships

College of Science and Mathematics

General

Shirley Caffee Boykin Scholarship
John Phillip Kittel Memorial Scholarship
Brooks O. Pittman Science Scholarship
Fred D. & Gail Brooks White Scholarship

Department of Biology

Bowdon Area Hospital
Dr. Roy L. Denney Scholarship Fund
Arthur & Shirley Gardner Scholarship
Dr. Thomas A. Hart Scholarship Fund
Morgan M. Hutson Scholarship Fund
Ryan Kauffman Presidential Scholarship Endowment
Lampton Biological Lecture Series
William P. Maples Scholarship
Lois Martin Scholarship Fund
Dr. Jim Mathis Biology Scholarship
Molecular Photosynthesis Research Award
T.R. Cotton Williamson Memorial Scholarship

Department of Chemistry

Latha Barnes Chemistry Award
Chemistry Department Scholarship
William Lockhart Scholarship
Jack L. Grogan Scholarship
Pope-Grogan Chemistry Award
James A. Wash Scholarship Fund

Department of Computer Science

Computer Science Scholarship
Harvey Olin Jordan Scholarship

Department of Geosciences

John G. Chambers Scholarship
Geology Scholarships
Rodney K. Morrison Memorial Scholarship

Department of Mathematics

Jewell Miles Burson Calculus Award
Capt. David Cooley Memorial Scholarship
Marion Crider Endowed Chair
Marion Crider Math Department Fund
Marion Crider Scholarship
Dr. Georgia Martin Scholarship
Dr. Chatty Pittman Memorial Scholarship
Vachel Davis Whatley, Jr. Scholarship

Department of Physics

John Phillip Kittel Memorial Scholarship
Physics & Engineering Club Scholarship
R.K. Redding Construction Scholarship

College of Social Science

Department of Anthropology

Carole E. Hill Anthropology Award
Thelma B. Larson Award
Antonio J. Waring, Jr. Scholarship
Antonio J. Waring, Jr. Distinguished Professorship
John Walton Whatley Scholarship

Department of Criminology

Tony Jackson Garrett Scholarship

Department of Mass Communications

Dora Byron Memorial Scholarship
Margaret Gauthier Mass Comm Scholarship
Rhubarb Jones Scholarship
David S. Parkman, III Scholarship
Frances Parkman Memorial Scholarship
George Fields Whatley Scholarship

Department of Political Science

George T. Bagby Scholarship
Janet Clark Endowment
Dudley Crosson Scholarship
T. Trevor Head Memorial Award
Political Science Department Endowment
Jud Whatley Scholarship

Department of Psychology

Mike Arons Humanistic Psychology Scholarship
Cleo Margaret Hackney Memorial
Ann O. Wilson Endowment

Department of Sociology

Deborah Headrick Memorial Scholarship Fund
Berta Fields Whatley Scholarship

Scholarships

Richards College of Business

General Business

Major General John A. Beall Scholarship Fund
D.W. Brooks/Gold Kist of West Georgia Scholarship
Charles W. Cox Memorial Scholarship
Rufus M. Dixon Scholarship
Friends of Fred Scholarship - Fred Hutchins Scholarship Endowment
James B. Lipham Scholarship
McCalman Executive Roundtable
Dr. Faye McIntyre Honorary Scholarship
Earline J. Powers Business Education Scholarship
Henri Sims & Kennard Seforth Varn Scholarship
Richards College of Business Fund
Richards College of Business Visionary Endowment
Hugh W. Richards Memorial Scholarship
Sewell Chair Endowment
Robert J. Stone Endowment for Entrepreneurial Studies
Murray M. Webb Scholarship
Yeager Family Scholarship

Department of Accounting and Finance

Jimmy Couch Memorial
Eugene O. Poindexter Endowment Fund
Garrett, Stephens, & Thomas Scholarship
Naomi Satterfield Scholarship
Donna & Wayne Tervo Accounting Scholarship
Jack E. Threadgill, Sr. Memorial Scholarship Fund

Department of Economics

Economics Department Scholarship
Homer A. Hunt Scholarship
W. Glenn Moore Memorial Scholarship
Dr. Michael Raper Memorial Scholarship
Suzanne Lankford Sullivan Memorial Scholarship

Department of Management

Henry M. Cameron Scholarship Fund
Dr. Frank R. Hunsicker Memorial Award

Department of Marketing and Real Estate

Helen Harper Burton Memorial Scholarship
Gibson/Overton/Peete Memorial Scholarship Fund
Evelyn Taylor Greer Memorial Scholarship Fund

College of Education

General Education

CHREA 20th Century Scholarship
CHREA 21st Century Scholarship
Lewis L. & Floy Burson Combs Memorial Scholarship
William Conner Scholarship
Bill Cummings Scholarship Fund
Dr. Dano M. Faires Endowed Memorial Scholarship
Dag Folger Memorial Scholarship
Debbie Forrester Memorial Scholarship
Edna Becker Hallum Scholarship
Johnnie & Edna Huey Scholarship
Sadie M. Hughes Scholarship
Leona Ingram Scholarship
Ruth Musick Jackson Scholarship
Wilda Seagraves Jackson Award
Effie McGuire Endowment Scholarship
Hugh McTeer Memorial Scholarship
Pearl Nix Scholarship
Pilot Club of Carrollton Scholarship
Dr. Thomas W. Sills Scholarship
Wilma Kidd Thornton Memorial Scholarship
Annice Whatley Award for Excellence

Collaborative Support and Intervention

Carrollton Civitan Scholarship
Moselle T. Chappell Memorial Fund
George Colyer Scholarship
Herbert S. & Pauline T. Hatton Scholarship
Louis Herzog Scholarship - Carroll County ARC Scholarship
Dr. John J. & Ann K. Pershing Memorial Scholarship
Miss Michele & Dr. Nancy Pollard Scholarship

Early Learning and Childhood Education

Connie Wright Gunter Scholarship in Early Childhood Education
Judy Kerr Memorial Scholarship

Educational Innovation

Priscilla Bennett Family Scholarship
The Annie Belle Weaver Memorial Scholarship

Scholarships

College of Education (continued)

Leadership and Applied Instruction

Edwin M. Blue Scholarship
Mary White Davidson Scholarship
David Davis Memorial Scholarship Endowment Fund
Linton Deck Leadership Scholarship Fund
Dr. Gus Douvanis Memorial Scholarship
David Dugan Scholarship
Bernice Freeman Memorial Scholarship
Dr. Prentice L. Gott Family Scholarship
Fred F. Hallum Family Scholarship Endowment
Joe H. McGiboney Scholarship
Dot McNabb Scholarship
Dr. Robert Reeves Scholarship
Peggy Steelmon Scholarship
Thomas S. Upchurch for Educational Excellence

School of Nursing

Raymond L. Abernathy Graduate Nursing Scholarship
Ayers/Hudson Memorial Nursing Scholarship
Donna Ayers Memorial Nursing Scholarship
Dr. Jeanette C. Bernhardt Merit Scholarship Endowment
Pansy Tisinger Brown Memorial Nursing Scholarship
Carroll-Haralson Medical Alliance Scholarship
DeVillier Family Trust Fund
Jonathan & Larry Grams Memorial Scholarship
Betty Griffith Memorial Scholarship
Ila Mae Gunnell Memorial Scholarship
Dr. Claudette Hayes Scholarship
Carl C. & Judith F. Horvath Memorial Scholarship
Jean Aycock McCauley Scholarship
Nursing Department Scholarship
Reynolds Nursing Education Scholarship
Ernest M. Sewell Scholarship
Arta Mae Whatley Scholarship
Lettie Pate Whitehead Foundation Scholarship
Peter Woodhouse Ware Graduate Nursing Scholarship

Honors College

General

Advanced Academy of Georgia Scholarship in Honor of Dr. Julian Stanley
Bank of North Georgia Presidential Scholarship
BB&T Presidential Scholarship
Coca-Cola Presidential Scholarship
Ovid Davis Scholarship
Elizabeth C. Boyd Presidential Scholarship
James E. Boyd Presidential Scholarship
Mrs. Jewell Miles Burson Presidential Scholarship
Carroll EMC Presidential Scholarship
Chester Gibson Scholarship

Honors College (continued)

Richard H. Glanton Presidential Endowment
Pat Hughes Memorial Scholarship
Christine Kauffman Hanson Presidential Scholarship
J. Albert & Martha H. Jones Presidential Scholarship
Jason Kauffman Presidential Scholarship
Scott Kauffman Presidential Scholarship
Mary Ryan Miles Scholarship
Presidential Scholarship
Russell & Mary Sarnar Presidential Scholarship
Julian Stanley Academy Presidential Scholarship ???
Yong D. Suh Scholarship
Systems & Methods Presidential Scholarship
Tisinger Debate Tournament
Dr. Donald Wagner Endowed Scholarship

Newnan Center

Larry Grams Memorial Nursing Scholarship - Newnan
Newnan Campus Scholarship
Newnan Kiwanis Scholarship
Emily Thomasson Sealy Memorial Scholarship

Debate

Ovid Davis Scholarship
Chester Gibson Scholarship
Tisinger Debate Tournament

Academic Affairs

Ingram Library

Charles E. Beard Ingram Library Endowment Fund
Dr. Ronald S. Love Memorial Scholarship
Sarah Rigg Library Endowment

Business and Finance

Facilities and Grounds

"Little John" Smith Landscape Scholarship

Student Affairs and Enrollment Mangement

Career Services

Student Research Assistance Program

Student Development

William Perry & Berna Teal Burson Memorial Endowment
Render Lee Whatley Scholarship

Center for Student Involvement

Leadershape Scholarship

International Services and Programs

Sylvia Shortt Scholarship for International Students

Scholarships

University Advancement

Athletics Scholarships

Stephen C. Anthony Citizenship Athletics Scholarship
Lee Booth Scholarship
W. Brown Basketball Scholarship
W. Brown Football Scholarship
Tonia Rutledge Cheatwood Softball Scholarship
M. Dan Gray Scholarship
H. Olin Jordan Memorial Scholarship Fund
C. Henry Lumpkin Baseball Scholarship
Lynde Nix Memorial Scholarship

Other Scholarships

Alumni Association Endowment
Rev. John Caylor Baptist Student Union
Chi Phi Scholarship Fund
E. Woodfin Cole Presidential Fund
George & Bertha Echols Scholarship
Bobby Evans Baptist Student Union Scholarship
Goizuetta Scholarship Endowment
Hogan Excellence Fund
Eloise Merrell Loan Fund
National Excellence Fund
President's Discretionary Fund
Richards University Fund
West Georgia Foundation Scholarship
WG Excellence Fund
Frances Wood Wilson Foundation Scholarship

Source: Development and Alumni Relations

University of West Georgia National Alumni Association

<http://www.westga.edu/alumni/>

The alumni of the University of West Georgia constitute its largest single constituency and represent its most valuable resource. Membership in the Alumni Association is open to all graduates of the State University of West Georgia, West Georgia College, and the Fourth District Agricultural and Mechanical School. A 36-member Board of Directors, along with several lifetime members, direct activities of the Association. The Association informs alumni of institutional plans, progress, opportunities, and needs.

Perspective, the alumni publication, is mailed to all alumni and friends three times a year. The spring issue includes the Honor Roll of Giving and is presented in a magazine format.

Major activities sponsored by the Alumni Association include Homecoming, dinner with 12 strangers, as well as reunions and special events that involve hundreds of alumni each year.

2011-2012 Executive Committee

President - Rob T. Dial '06, Woodstock

Vice President - Greg Benda '05, Smyrna

Treasurer - Dustin W. "Dusty" Hightower '04, Carrollton

Secretary - Terra Washington '97, Decatur

Source: Office of Development Alumni Relations

Number of Georgia Resident Alumni as of December 2011

County	Total	County	Total	County	Total	County	Total
Appling	8	Crisp	8	Jeff Davis	3	Rabun	45
Atkinson	2	Dade	57	Jefferson	7	Randolph	8
Bacon	9	Dawson	47	Jenkins	2	Richmond	78
Baker	0	Decatur	18	Johnson	3	Rockdale	336
Baldwin	24	Dekalb	1,959	Jones	33	Schley	3
Banks	26	Dodge	11	Lamar	123	Screven	5
Barrow	152	Dooly	1	Lanier	2	Seminole	4
Bartow	776	Dougherty	59	Laurens	31	Spalding	448
Ben Hill	9	Douglas	2,292	Lee	36	Stephens	32
Berrien	5	Early	9	Liberty	16	Stewart	2
Bibb	176	Effingham	21	Lincoln	3	Sumter	26
Bleckley	6	Elbert	32	Long	2	Talbot	18
Brantley	3	Emanuel	12	Lowndes	51	Taliaferro	1
Brooks	10	Evans	5	Lumpkin	52	Tattnall	5
Bryan	18	Fannin	100	Macon	7	Taylor	5
Bulloch	30	Fayette	1,641	Madison	32	Telfair	2
Burke	7	Floyd	1,253	Marion	6	Terrell	4
Butts	105	Forsyth	612	McDuffie	14	Thomas	30
Calhoun	1	Franklin	28	McIntosh	18	Tift	33
Camden	29	Fulton	2,625	Meriwether	191	Toombs	22
Candler	6	Gilmer	130	Miller	7	Towns	34
Carroll	6,361	Glascocock	1	Mitchell	6	Treutlen	4
Catoosa	469	Glynn	124	Monroe	59	Troup	656
Charlton	3	Gordon	491	Montgome	5	Turner	5
Chatham	158	Grady	10	Morgan	70	Twiggs	3
Chattahoo	0	Greene	52	Murray	344	Union	54
Chattooga	203	Gwinnett	2,107	Muscogee	216	Upton	150
Cherokee	1,040	Habershan	78	Newton	321	Walker	432
Clarke	171	Hall	421	Oconee	108	Walton	278
Clay	2	Hancock	6	Oglethrope	19	Ware	27
Clayton	761	Haralson	1,106	Paulding	1,494	Warren	5
Clinch	1	Harris	99	Peach	11	Washingto	11
Cobb	3,694	Hart	49	Pickens	153	Wayne	13
Coffee	13	Heard	272	Pierce	10	White	57
Colquitt	13	Henry	994	Pike	179	Whitfield	963
Columbia	85	Houston	133	Polk	799	Wilcox	1
Cook	5	Irwin	4	Pulaski	4	Wilkes	15
Coweta	2,934	Jackson	134	Putnam	47	Wilkinson	8
Crawford	10	Jasper	47	Quitman	1	Worth	10
						TOTAL	42,691

968 are lost and deceased:

Source: Office of Development and Alumni Relations

Number of West Georgia Alumni in the United States as of December 2011

STATE	TOTAL	STATE	TOTAL
ALABAMA	1,178	MONTANA	16
ALASKA	28	NEBRASKA	11
ARIZONA	128	NEVADA	40
ARKANSAS	57	NEW HAMPSHIRE	16
CALIFORNIA	384	NEW JERSEY	79
COLORADO	184	NEW MEXICO	35
CONNECTICUT	38	NEW YORK	144
DELAWARE	19	NORTH CAROLINA	695
DISTRICT OF COLUMBIA	27	NORTH DAKOTA	4
FLORIDA	1,369	OHIO	133
GEORGIA	42,814	OKLAHOMA	48
HAWAII	13	OREGON	50
IDAHO	15	PENNSYLVANIA	136
ILLINOIS	117	RHODE ISLAND	8
INDIANA	105	SOUTH CAROLINA	478
IOWA	21	SOUTH DAKOTA	8
KANSAS	38	TENNESSEE	834
KENTUCKY	149	TEXAS	466
LOUISIANA	94	UTAH	30
MAINE	8	VERMONT	8
MARYLAND	135	VIRGINIA	338
MASSACHUSETTS	65	WASHINGTON	108
MICHIGAN	75	WEST VIRGINIA	22
MINNESOTA	47	WISCONSIN	45
MISSISSIPPI	125	WYOMING	14
MISSOURI	70		
		TOTAL	51,069

966 are lost, deceased, or in foreign countries.

Source: Office of Development and Alumni Relations

Campus Planning and Facilities



Campus Planning and Facilities

The Department of Campus Planning and Facilities consists of the Assistant Vice President's Office for Campus Planning and Facilities, Architecture, Engineering, and Construction (AEC) Project Services, Risk Management/Environmental Health and Safety, and Facilities and Grounds. Its mission is to operate, maintain, and support the development of quality facilities, grounds and services, and support the campus community, students, faculty, and staff. The department supports the university's commitment to the pursuit of academic excellence in a personal learning environment with cost-effectiveness, safety, and in an environmentally responsible manner.

Facilities and Grounds is comprised of the Work Information Center, Motor Pool, Custodial Services, Moves/Set-ups, Carpentry/Paint Shop, HVAC, Electrical Shop, Landscape Construction, and Landscaping and Grounds Maintenance. The functions of repair and routine maintenance, energy management, and special projects are scheduled, performed, and managed for more than 2.3 million square feet of building floor space. Displaying a helpful and pleasant attitude to customers, the staff is willing to address the needs and concerns at any time, seven days a week.

UWG campus is considered to be one of the most beautiful in the University System of Georgia. Landscaping and Grounds Maintenance continues a long tradition of systematic landscaping that began in 1919 when Fourth District A&M School Principal, John H. Melson, solicited gifts of trees from each of the then forty-eight states for transplantation to the school campus. UWG landscapers care for the many plant species residing on the 645 acre campus. They also construct and maintain irrigation systems, curbs, gutters, sidewalks, and athletic fields. A University nursery cultivates plants for seasonal, new, or replacement landscaping.

AEC Project Services provides expertise for planning and construction work. The department has architectural, engineering and drafting capabilities within the design group. Because of the continuing growth and changing needs of the University, they often act as project managers for contracted work.

The mission of Risk Management/Environmental Health and Safety Department (RM/EHS) is to protect students, visitors, faculty, and staff of the University through training, education, hazard abatement, and information dissemination. Additionally, they assist students in preparing for the future in environmental health and safety. RM/EHS ensures that all activities conducted on campus either meet or exceed requirements set by local, state, and federal agencies, thus enhancing the overall working environment while fully supporting the education mission on campus.

University of West Georgia Land Holdings

Property	Acres
Main Campus	375.44
Northwest Campus	244.26
Evergreen Property	25.32
Total Acres	645.02

Source: Campus Planning and Facilities

University of West Georgia

Campus Facilities

As of June 30, 2011

Facility	Date of Construction or Acquisition	Approximate Square Footage	Investment*	Approximate Replacement Cost or Present Value**
Bonner House	1843	2,246	8,000	179,680
Kennedy Chapel	1893	880	27,000	193,600
Melson Hall	1907	13,141	48,000	2,102,560
Honors House	1907	3,892	17,000	544,880
Honors Annex	1907	1,080	24,000	129,600
Alumni House	1930	8,335	120,000	1,333,600
Mandeville Hall	1935	11,946	103,000	1,911,360
Martha Munro	1935	10,041	53,000	1,907,790
Old Auditorium	1937	18,172	126,000	3,452,680
Sanford Hall	1938	10,118	170,000	1,618,880
Weight Building	1944	1,420	3,000	71,000
University Communications and Marketing	1948	2,675	1,000	321,000
Aycock Hall	1952	28,709	300,000	4,593,440
Anthropology Building	1954	15,902	277,000	2,782,850
Richards College of Business and Annex	1958	33,086	2,024,000	6,286,340
Parker Hall	1959	17,225	229,000	2,756,000
Art Annex	1959	8,885	40,000	1,554,875
Callaway Building	1962	22,154	309,000	4,873,880
Row Hall	1963	35,495	927,000	5,679,200
Cobb Hall	1964	25,931	503,000	4,148,960
Strozier Hall	1964	23,065	497,000	3,229,100
Gunn Hall	1965	39,042	760,000	5,075,460
Boykin Hall	1966	37,889	681,000	4,925,570
University Community Center	1967	62,673	1,566,000	9,087,585
Boyd Building	1968	38,570	767,000	7,714,000
Library	1968	109,155	3,428,000	22,922,550
Pafford Building	1968	43,158	758,000	7,552,650
Downs Hall	1969	62,397	1,388,000	8,111,610
Humanities	1970	77,328	1,489,000	13,532,400
Watson Hall	1970	57,036	1,324,000	7,414,680
Education Center	1970	63,688	4,188,000	11,145,400
Health Services	1971	9,114	371,000	1,959,510
Bowdon Hall	1971	58,797	1,587,000	7,643,610
Strozier Annex	1972	26,801	750,000	3,484,130
Biology Building	1972	72,560	2,300,000	14,512,000
Facilities/Plant Operations	1972	12,674	140,000	1,774,360
Warehouse/Supplies	1972	7,608	98,000	380,400
Vehicle Repair Shop	1972	3,900	40,000	175,500
Tyus Hall	1973	51,119	1,329,000	8,179,040
Chemical Storage	1974	300	3,000	30,000
Food Service (Z6)	1974	58,569	1,584,000	9,371,040

*Rounded to the nearest \$1,000

**From the Facilities Inventory Report and are determined by the Board of Regents.

Source: *Campus Planning and Facilities*

Campus Facilities

Facility	Date of Construction or Acquisition	Approximate Square Footage	Investment*	Approximate Replacement Cost or Present Value**
Locksmith/Electronics	1974	987	4,000	78,960
Facilities Storage and Shed	1974	5,054	51,000	126,350
Observatory	1979	484	16,000	38,720
Football Field House (Murphy Bldg)	1980	25,772	668,000	2,834,920
Track Storage	1980	800	5,000	88,000
Newnan Center Bldg. 2000	1980	3,200	320,000	512,000
Newnan Center Bldg. 3000	1980	2,400	25,000	84,000
Student Activities Center	1981	9,000	91,000	990,000
Storage Warehouse	1981	5,822	27,000	203,770
Football Storage	1984	600	6,000	66,000
Publications and Printing	1985	7,585	135,000	606,800
Townsend Center for the Performing Arts	1987	28,721	2,934,000	5,456,990
Intramural Restroom	1988	528	7,000	58,080
Public Safety Storage	1988	245	1,000	12,250
Art Anagama Kiln	1990	400	1,000	10,000
Dugout Home	1992	513	6,000	56,430
Dugout Visitors	1992	513	6,000	56,430
Baseball Press Box	1992	1,768	50,000	194,480
Waring Archaeology Lab	1992	6,296	32,000	440,720
Architecture,Engineering,Construction Svcs.	1992	2,400	40,000	192,000
Performing Arts Center Warehouse/Storage	1992	2,413	22,000	84,455
Newnan Center Bldg. 1000	1992	11,400	600,000	1,824,000
West Communications Hut	1994	253	33,000	88,550
Education Center Annex	1995	41,667	4,347,000	8,958,405
Archaeology Storage Building	1995	288	3,000	8,640
Technology- Enhanced Learning Center	2000	115,811	20,204,000	26,057,475
Landscape Storage Shed	2002	1,800	18,000	45,000
Adamson Hall	2003	21,406	2,785,000	4,067,140
Band Storage	2003	720	29,000	21,600
Landscaping Greenhouse	2003	3,000	60,000	210,000
Suite 1 (Rental)	2004	51,365	4,877,000	5,393,325
Suite 2 (Rental)	2004	36,976	3,511,000	3,882,480
Suite 3 (Rental)	2004	44,169	4,193,000	4,637,745
Commons (Rental)	2004	6,440	624,000	676,200
Soccer Field Restrooms	2004	260	13,000	16,900
Landscaping Shed	2004	250	4,000	5,000
Photography Studio	2005	903	65,000	108,360
Arbor View Apartment "A" (Rental)	2005	73,352	4,418,000	7,701,960
Arbor View Apartment "B" (Rental)	2005	62,885	3,573,000	6,602,925
Arbor View Apartment "C" (Rental)	2005	53,268	3,144,000	5,593,140

*Rounded to the nearest \$1,000

**From the Facilities Inventory Report and are determined by the Board of Regents.

Source: *Campus Planning and Facilities*

Campus Facilities

Facility	Date of Construction or Acquisition	Approximate Square Footage	Investment*	Approximate Replacement Cost or Present Value**
Facilities Storage Building	2006	10,000	194,000	250,000
Campus Center (HPE 1965)	2006	131,448	2,181,700	24,975,120
Callaway Building Annex	2008	29,500	4,990,000	6,490,000
Coliseum (Health and Wellness Building)	2008	122,500	23,044,000	26,950,000
Greek Village A Kappa Delta (Rental)	2009	6,328	654,000	791,000
Greek Village B Kappa Alpha (Rental)	2009	5,150	528,000	643,750
Greek Village C Pi Kappa Phi (Rental)	2009	6,328	654,000	791,000
Greek Village D Alpha Xi Delta (Rental)	2009	6,328	654,000	791,000
Greek Village E Alpha Tau Omega (Rental)	2009	5,150	528,000	643,750
Greek Village F Alpha Gamma Delta (Rental)	2009	6,328	654,000	791,000
Greek Village G Delta Chi (Rental)	2009	3,268	331,000	408,500
Greek Village H Tri Delta (Rental)	2009	6,328	654,000	791,000
Greek Village I Pi Kappa Alpha (Rental)	2009	5,150	528,000	643,750
Greek Village J Phi Mu (Rental)	2009	6,328	654,000	791,000
Greek Village K (Rental)	2009	3,632	377,000	454,000
Greek Village L (Rental)	2009	3,268	331,000	408,500
Greek Village M (Rental)	2009	3,632	377,000	454,000
Greek Village N (Rental)	2009	3,268	331,000	408,500
Greek Village O Chi Omega (Rental)	2009	6,328	654,000	791,000
Greek Village P Kappa Sigma (Rental)	2009	6,328	654,000	791,000
Greek Village Q Community Center (Rental)	2009	3,011	300,000	376,375
Greek Village R Guest House (Rental)	2009	1,945	200,000	243,125
Stadium Home Restrooms North (Rental)	2009	3,807	1,250,000	837,540
Stadium Home Restrooms South (Rental)	2009	3,807	1,250,000	837,540
Stadium Home Tickets (Rental)	2009	408	100,000	89,760
Stadium Home Concessions North (Rental)	2009	944	250,000	207,680
Stadium Data/Mech/Electrical (Rental)	2009	759	50,000	121,440
Stadium Security (Rental)	2009	756	100,000	120,960
Stadium Home Concessions South (Rental)	2009	944	250,000	207,680
Stadium Press and Suites (Rental)	2009	15,496	5,089,000	3,409,120
Stadium Visitor RR and Tickets (Rental)	2009	4,198	1,000,000	923,560
Stadium Visitor Concessions/Lockers (Rental)	2009	3,415	1,000,000	751,300
Stadium Administrative Office (Rental)	2009	41,623	5,000,000	4,994,760
Women's Fieldhouse (Rental)	2009	4,361	1,132,000	959,420
Softball Visitor Dugout (Rental)	2009	350	11,000	38,500
Softball Home Dugout (Rental)	2009	350	11,000	38,500
UWG Bookstore (Rental)	2011	23,328	4,100,000	4,100,000
TOTALS		2,304,582	147,370,700	370,068,100

*Rounded to the nearest \$1,000

**From the Facilities Inventory Report and are determined by the Board of Regents.

Source: Campus Planning and Facilities

Information Resources and Technology



Irvine Sullivan Ingram Library

<http://www.westga.edu/library/>

As the academic heart of the campus, Ingram Library provides online and in-house collections and services to meet curricular needs. The four story building of some 85,000 square feet is open 24 hours a day from Sunday afternoons through Friday evenings, and during the day on Saturday. The main floor of the library is designed for individual and group study, and features areas for group project development. A full-service Starbucks, entered on the west side of the library, faces Love Valley and the Campus Center. The library facility contains electronic classrooms, conference rooms, small group study rooms, and computers and other equipment for accessing materials retained in print, online, recorded, and micro formats.

Wireless access to internet resources is available throughout the building. Student Technology Assistants are on duty at all hours to help patrons with technology-related needs, and with laptops and other equipment available for student check-out for in-house use. Individuals seeking assistance with library resources and research needs can utilize reference services at the reference desk on the main floor of the library, via telephone, and through the online *QuestionPoint* 24/7 chat reference service available through the library web site. Individuals may book appointments with librarians through the GoPRO (Personalized Research Option) to explore resources to support their research.

Library collections include some 400,000 cataloged volumes, over 1,100,000 microforms, over 11,000 audiovisual items, and more than 20,000 maps and charts. The library provides access to some 400 electronic databases and some 50,000 print and electronic serials, including magazines, scholarly journals, and newspapers. As a selective depository for federal documents, the library houses an extensive collection of United States government publications and provides access to government information available in online and other electronic formats.

The library participates in state and regional consortia, facilitating extensive access to the collective resources of university system and other libraries. The library catalog, provided through Georgia Interconnected Libraries (GIL), lists materials available in Ingram Library collections, and provides links to catalogs of other libraries. West Georgia students, faculty, and staff may request books from any university system library through the online GIL Express service, a feature of the universal catalog, and they also have check out privileges when visiting system libraries. In addition, the University of West Georgia is a member of the Atlanta Regional Council for Higher Education (ARCHE), which allows students, faculty and staff to utilize the resources of member libraries. Ingram Library provides interlibrary loan service through its web site, facilitating the borrowing of books from libraries throughout the country. Articles requested through interlibrary loan are transmitted to patrons electronically.

Library users have access to Georgia Library Learning Online (GALILEO), an online library of databases, full text electronic journals, and reference resources available to all Georgians, as well as to an extensive range of electronic materials selected to support the university's academic programs. All licensed electronic materials are available to university students and faculty through any computer with internet access. By providing access to an extensive range of online materials, developing an electronic reserve system and online request systems for obtaining materials from other libraries, the library ensures that students enrolled at the university's remote class sites and in online courses are afforded the same level of library support as those who attend classes on the Carrollton campus. Fax and courier services to off campus class sites, and arrangements with libraries in Newnan and other locations also support off campus students.

The library pursues an aggressive instruction program. LIBR 1101, a for-credit course which is part of Area B of the Core curriculum, is taught as a face to face class, or students may register for online sections of the course. LIBR 1101 is designed to orient students to doing research in academic libraries and to critically evaluating information and media resources. Library instruction sessions tailored to specific assignments are developed for undergraduate and graduate courses at the request of faculty.

Ingram Library's Penelope Melson Society, the library's friends organization, was founded during the library's centennial in 2008. The Society supports author visits, presentations by scholars, book discussions, nationally-touring exhibits, exhibit talks, and docent-led tours of exhibits for groups. Members of the Melson Society founded the Second Century Collection to extend library collections. Penelope Stevens Melson, 1879-1969, wife of John Holland Nelson, first principal of the Fourth District Agricultural & Mechanical School, the predecessor of the University of West Georgia, founded the institution's first library in 1908 and volunteered as its librarian until the couple moved to Hogansville, Georgia in 1920. Mrs. Melson's service as a community leader who secured educational and training opportunities for the less fortunate provides inspiration for the ongoing development of the library she founded.

Thomas B. Murphy Holocaust Teacher Training and Resource Center

The Thomas B. Murphy Holocaust Teacher Education Training and Resource Center, administered by the Georgia Commission on the Holocaust and located on the second floor of Ingram Library, is the only Holocaust center in the United States devoted to teacher training located in a state-supported institution's library. With the study of the Holocaust as a catalyst, the Center encourages and supports human understanding and dignity by developing programs to open minds and hearts to the appreciation of all of humankind. The Center's multimedia resource collection includes books, videotapes, archival, and electronic materials augmented by resources available within the collections of Ingram Library. Working collaboratively with academic departments and area organizations, the Center provides curriculum development assistance, teacher conferences, staff development seminars, exhibits, and other programs.

Source: Irvine S. Ingram Library

The library is named in honor of Irvine Sullivan Ingram, the institution's first president. The glass enclosed lobby overlooks a study garden designed in honor of Maurice Townsend, fifth president of the university, and the Thomas B. Murphy Reading Room, which honors Georgia's longest-serving House speaker. Speaker Murphy's State Capitol office was re-created on the library's ground floor to honor his service to the state. The Murphy office installation is supported with panel and digital exhibits exploring Georgia history from the Depression era through the twenty-first century.

The library's Annie Belle Weaver Special Collections provides access to information about the history of the university and the geographic area it serves. Photographs, family histories, and other materials associated with the west Georgia region are included in Special Collections, as are materials on sacred harp music and American psalmody.

A special effort is being made to acquire the manuscript collections of individuals who have represented the region in state or national legislative bodies. One of the most notable collections is that associated with Georgia's Political Heritage Program, begun by university faculty in 1985. The collection includes taped interviews with state and national leaders, among them most of Georgia's post-World War II governors, U.N. Ambassador Andrew Young, U.S. House Speaker Newt Gingrich and Georgia House Speaker Tom Murphy. Senator Herman Talmadge was the first interview subject for the program. The Talmadge collection is particularly significant as it includes some thirty-five interviews taped between 1985 and 1995 as well as interviews with his staff and some of his supporters. Special Collections is joined by the Department of History's Center for Public History and the Department of Political Science & Planning's Thomas B. Murphy Center for Public Service, which maintain offices and student work space on the library's ground floor to support the university's Center for Civic Engagement.

University of West Georgia

Library Acquisitions and Services

Fiscal Years 2002 – 2011

Holdings	2002	2003	2004	2005	2006
Volumes added during the year	8,050	8,359	9,681	7,543	12,704
Volumes at end of the year	378,946	384,249	391,330	397,169	404,580
Reels of microfilm at end of year	23,047	22,827	22,773	24,447	24,554
Physical units of other microtext at end of year	1,104,126	1,117,611	1,132,936	1,143,479	1,142,429
Periodical titles received at end of year	1,342	1,226	1,194	1,101	1,228
Electronic Periodical Titles*	-	-	-	-	-
Items					
U.S. Documents	207,525	206,718	201,779	201,779	202,339
U.S. Documents (Volumes on Microfiche)**	84,807	86,775	75,198	65,854	58,655
Collection Development					
Expenditures for Supplies and Materials-Books	438,085	419,268	554,758	699,840	683,620
Expenditures for Periodicals	370,189	396,944	331,843	534,350	371,710
Expenditures for Audio Visual Materials	4,509	8,452	5,482	10,953	19,668
Circulation***	74,107	65,571	48,524	46,401	45,667
Interlibrary Loans					
Borrowed	2,724	3,453	3,097	5,538	3,045
Loaned	5,538	5,746	5,239	8,106	4,968
Full Text Retrievals from electronic databases	-	-	235,622	319,747	343,268
Credit Hours Generated LIBR1101	776	824	807	604	492
Reference Questions ****	8,632	8,632	23,504	13,200	13,200
Holdings	2007	2008	2009	2010	2011
Volumes added during the year	8,667	5,524	12,567	6,063	2,375
Volumes at end of the year	413,782	423,903	406,989	433,661	412,117
Reels of microfilm at end of year	24,544	24,544	22,046	24,554	22,217
Physical units of other microtext at end of year	1,098,523	1,143,479	1,118,882	1,092,995	1,051,048
Periodical titles received at end of year	1,228	1,247	932	823	766
Electronic Periodical Titles*	21,000	27,142	30,040	51,672	71,239
Items					
U.S. Documents	212,545	204,774	198,883	182,966	174,531
U.S. Documents (Volumes on Microfiche)**	59,655	31,734	46,708	30,204	30,204
Collection Development					
Expenditures for Supplies and Materials-Books	269,618	497,447	378,757	576,345	506,800
Expenditures for Periodicals	464,806	458,844	412,439	456,458	485,844
Expenditures for Audio Visual Materials	8,200	19,378	5,207	6,104	1,708
Circulation***	55,187	51,631	60,924	49,142	33,872
Interlibrary Loans					
Borrowed	2,270	2,347	1,858	1,753	1,640
Loaned	4,696	4,891	5,316	4,600	4,591
Full Text Retrievals from electronic databases	***	702,377	370,939	405,267	425,530
Credit Hours Generated LIBR1101	442	496	484	610	1,134
Reference Questions ****	9,850	10,750	10,641	8,816	10,407

* Based on E Journals search results via SFX Knowledge Base 12/1/2007

** Decline due to electronic resources

*** Vendor statistics incomplete as of reporting date

**** Statistical Change

Source: Irvine Sullivan Ingram Library

Information Technology Services

<http://www.westga.edu/its/>

Information Technology Services (ITS) provides technology leadership and support to all areas of the University of West Georgia community. ITS offers a wide variety of services — from user assistance and training, to planning and maintenance of the campus technology infrastructure. Providing this range of services makes ITS role a very challenging one. To successfully meet the challenge, ITS is continually upgrading services and equipment that are available to the campus community.

ITS also manages the campus' administrative and residence hall data and telephone networks, as well as the computer systems that provide email, web and other mission critical services. High-speed Internet access is provided through a link to PeachNet, operated by the University System of Georgia. Wireless access is available in most academic buildings and in common areas of the residence halls. Student computer labs are located in the Richards College of Business, Technology-enhanced Learning Center, College of Education, and Ingram Library. Many of these labs are used for instruction; however, the Library computers are available for general use.

Information Technology Services is also responsible for the installation, maintenance, and training of the classroom Audio Visual (AV) equipment. A wide-range of AV technology, including cameras, microphones, sound systems, and projectors is available for checkout. In addition, ITS provides multimedia services including creation, modification, duplication and format conversion for graphic images, videos and audio media. Scanning documents, pictures, negatives, and 35 mm slides is also available.

Source: Information Technology Services 2011-2012

Institutional Research and Planning



Institutional Research and Planning

www.westga.edu/irp

History

The Department of Institutional Research and Planning at West Georgia was established in 1967. Through various studies, IRP evaluates the University culture by investigating campus community norms and values. Research findings aid the administration in determining the institutional climate and provide a basis for policy analysis and identification of potential problems. In the early 1980's, University of West Georgia was the first University System of Georgia institution to conduct institutional retention studies. Retention studies indicate causes of attrition, and such studies analyze retention-attrition behavior and provide a basis for policy revisions, such as establishing alternative admissions criteria and strategic enrollment planning.

Mission

The University of West Georgia's strong commitment to "*Educational Excellence in a Personal Environment*" is central to the mission of the Department of Institutional Research and Planning. The Department has, as its primary mission, the collection of data (from both internal and external sources), and timely analysis, distribution, and presentation of information for use in planning, decision-making, and policy formulation at the University.

The Department is also responsible for ensuring the accuracy of vital University statistics and for reporting these data to a broad spectrum of stakeholders including regulatory entities, management, faculty, private organizations, parents and the general public. Another major function of the Department is to respond to diverse requests for data from members of the University community and to assist with research and analysis.

Institutional Research and Planning also serves as records custodian for the University of West Georgia. In this capacity, it promotes an efficient administration and management of State governmental records in compliance with the Georgia Records Act and the Georgia Open Records Act. Institutional Research and Planning also advises departments on appropriate records keeping techniques and guides in developing records retention schedules.

Goals

The Department of Institutional Research and Planning pursues the following goals to facilitate institutional effectiveness:

- Serves the executive functions of the institution by providing a reliable and proactive data-based support to enhance decision making.
- Promotes an improvement of West Georgia's planning process in accordance with the Board of Regents' policies and the Southern Association of Colleges and Schools' criteria.
- Generates data, information, and analytical reports on institutional research topics designed to improve the planning processes at the University.
- Provides systematic collection and reporting of standard institutional, regional, environmental, and student-centered information for institutional planning and assessment.
- Responds punctually to spontaneous requests for data, descriptive information, and analytical reports.
- Provides guidelines and standards to various departments for establishing and maintaining successful individual records management programs that comply with the Georgia Records Act.
- Monitors progress on implementing the University's strategic planning goals.

Major Projects

The Department of Institutional Research conducts various studies and provides support in completing the following projects:

- Annual Report of Institutional Progress
- Annual SACS Institutional Profile Update
- Assorted External Surveys
- Comparator and Aspirational Peers Analysis
- Consortium for Student Retention Data Exchange
- Five-Year Departmental Report
- Graduating Senior Exit Survey
- Institutional Key Performance Indicators
- Institutional Research Customers Survey
- Institutional Strategic Plan
- Multicultural Festival Survey
- National Study of Instructional Costs and Productivity
- National Survey of Student Engagement
- NCAA Athletic Interest Survey
- NCAA Enrollment and Persistence-Rates Disclosure Report
- Quality Enhancement Plan
- Records Management
- U.S. Department of Education's IPEDS Reports
- University Printed Fact Book
- University On-line Fact Book
(www.westga.edu/irp)

The Department continues to provide assistance to various departments and committees regarding preparation for re-accreditation by:

- Southern Association of Colleges and Schools
1866 South Lane, Decatur, Georgia 30033-4097
Telephone number 404-679-4501

- AACSB The Association to Advance Collegiate Schools of Business International
- American Chemical Society
- American Speech-Language Hearing Association
- Accreditation Board for Engineering and Technology
- Commission on Collegiate Nursing Education
- Council for Humanistic Transpersonal Psychologies
- National Association of Schools of Art and Design
- National Association of Schools of Music
- National Association of Schools of Public Affairs and Administration
- National Association of Schools of Theatre
- National Council for Accreditation of Teacher Education

The Department's staff are active in their professional fields, attending several state and national conferences, and participating in several workshops. Staff made presentations at professional meetings and were active participants in a number of sessions as facilitators.

The unit collects, analyzes, and reports data and information relative to this institution and the University System's enrollment, graduation rates, course taking behavior, academic achievement, persistence rates, declared majors, and degrees conferred. Other efforts to perpetuate thoughtful planning include production of annual Just-the-Fact and the Fact Book. The unit responds to many requests for data pertaining to enrollment, student demographics, academic program statistics, and general environmental indicators. Additionally, the Department handles all open records requests in compliance with the Georgia Open Records Act.

Completed Requests

Open Records and Subpoenas	100
Projects	66
Records Management	38
Requests by e-mail/phone	325
Surveys	57

Institutional Research and Planning Website

www.westga.edu/irp

The IRP website is a repository of data and information, providing ready access to all UWG stakeholders for data-based decision-making.

To facilitate and maintain a data-driven environment for planning and decision making, the Department of Institutional Research and Planning makes data easily available to all stakeholders through its interactive website. The site is continually updated to provide current data and ensure unaided access and correct interpretation of the data posted.

From March 2011 to March 1, 2012, 756 unique visitors used the website with total visits of 5,430 which resulted in 21,198 page views. On average, the visitors reviewed about 4 pages and spent an average of 4.19 minutes on the site. During this period 5,392 visitors from 42 states within the United States accessed the website. Of the total site users, 86.7 percent were returning visitors while 13.3 percent were new visitors.

About 13 percent of the visitors accessed the site just once. Another 29 percent visited the site from 2 times to 25 times per year. It is encouraging that the bulk of the website users (58 percent) frequently made good use of the site by returning more than 25 times per year. It is the hope of the Department of Institutional Research and Planning that more faculty and staff will be using this site for collecting relevant data about UWG for evidence-based decision making on campus.

Website Visits

Frequency of Visits	No. of Visits	% of Visits
Once	721	13
2-4 times	526	10
5-8 times	274	5
9-14 times	315	6
15-25 times	436	8
26-50 times	571	10
51-100 times	737	14
101-200 times	634	12
201+ times	1,216	22
Total Visits	5,430	100

New and Returning Visitors

