

UNIVERSITY of 
West Georgia



Fact Book

2010 - 2011

2010-2011

University of West Georgia

Fact Book



Department of Institutional Research and Planning
Carrollton, GA 30118
678-839-6449



Dear Students, Faculty and Staff Colleagues, Alumni, and Friends of the University:

More people are discovering what a strong, diverse institution the University of West Georgia is. They are learning about the outstanding academics, vibrant student life and exciting athletic programs that are making UWG a destination university. As high-caliber high school students, their parents, counselors and teachers become more aware of the merits of UWG, its reputation for excellence will be enhanced.

Challenges remain, most notably with the state budget crisis. It is unknown at this point the extent of reductions that we might incur. But we've efficiently managed the cuts we've sustained over the past few years and are confident that we'll be able to do so again this year.

The fall semester opened with an enrollment of 11,283 students participating in an academic community that is challenging and full of opportunities.

They have chosen to enter a world of *unfettered opportunity*, which is one of the key messages of the University's new branding campaign, Go West. The messaging aims to tell a wider audience the story of the wonderful things going on at UWG. From online, print, and broadcast advertisements, more people are learning what it means to Go West and are seeing how they can come to UWG and make their mark.

There's evidence to suggest that the messaging is making its mark, too; the past two Preview Day events have drawn record numbers of visitors.

We recently received great academic news as the Board of Regents of the University System of Georgia approved UWG to add a Ph.D. program to its doctoral studies. The Ph.D. program in Psychology: Consciousness and Society will start admitting new students in the fall of 2011. I cannot overemphasize how important this milestone is in the history of our University. Thus far, there has been a firewall that prevented us from offering a Ph.D. program; I am delighted that we are now past that.

The Princeton Review continues to bestow favorable ratings on the University, recognizing it as a Best Southeastern College each year since 2004 and naming the Richards College of Business to its 300 Best Business Schools list. Both national recognitions are based on a survey regarding the college's academic programs and student satisfaction, as well as the University's student body and campus life.

UWG was recently accepted into a prestigious cooperative that provides research, technical assistance, and education to environmental and natural resource projects conducted by the government.

The outstanding facilities at UWG are being enhanced with a number of new projects. This spring, a new bookstore will be completed; giving students the opportunity to shop in a larger, more centrally located facility. Also later this year, a renovation of the Ingram Library will be finished, a project that will include a re-creation of the office of the late Thomas B. Murphy, longtime speaker of the Georgia House of Representatives.

At the University of West Georgia, we are blazing trails to new possibilities for scholarly achievement, creative expression, and service to humanity. Go West!

Onward and Upward, West Georgia!

Sincerely,



Beheruz N. Sethna, Ph.D.
Professor of Business Administration, and
President of the University

University of West Georgia Fact Book

Table of Contents

The University

History of the University	2
Campus Description	2
Map of Campus	4
Mission Statement	5
Vision Statement	5
The Strategic Plan	6
The Four Guiding Principles	7
Accreditations and Affiliations	8
The Honors College	8
Student Programs and Services	8
Intercollegiate Athletics	10

The Administration

Administrative Organization	14
University System of Georgia	14
University System of Georgia Institutions	15
University System of Georgia Board of Regents	15
University System of Georgia Administrative Personnel	16
University of West Georgia Administration	17
Departments of Instruction and Chairpersons	17
University of West Georgia Organization Charts	18

Enrollment and Credit Hour Production

Detailed Composition of UWG Student Body	22
Geographic Origin of Students by Classification	24
Geographic Origin of Students	25
Admissions Data	26
SAT Scores of Entering Freshmen	27
Undergraduate Applicant Profile	27
Total FTE Students	28
Total Enrollment and Student Credit Hour by Level	29
Credit Hour History by College	30
Distance and Distributed Education Center	36
History of Continuing Education Programs	37
Off Campus Programs	38
Retention Rates of Fall First-Time Full-Time Freshman Students	38
Student Financial Aid	39
Student Financial Aid Growth	41

Degrees

Degrees and Majors Offered	44
Degrees Conferred	46



Faculty

Faculty Profile 52
Composition of Faculty 53
Faculty Profile by College 54
Average Salary by Employee Category 59

Sponsored Research

Sponsored Operations 62
Fiscal Year(s) Assessment 62
Directors of Sponsored Projects 63
Faculty Research Grants 66
Faculty Research Enhancement Awards 69

Financial Information

Budgeting and Assessment Cycle 72
University Revenue by Source 73
University Operating Expenses 74
Distribution of the Student Dollar 76
Statement of Net Assets 77

West Georgia Foundation, Development and Alumni Relations

University of West Georgia Foundation 80
Foundation Officers and Trustees 81
Annual Fund Drive Results 82
Scholarships 83
West Georgia Alumni Association 88
Geographical Distribution of Alumni State of Georgia 89
Geographical Distribution of Alumni United States 90

Campus Planning and Facilities

Campus Planning and Facilities 92
Land Holdings 92
Campus Facilities 93

Information Resources and Technology

Irvine Sullivan Ingram Library 98
Library Acquisitions 100
Information Technology Services 101
Learning Resources Center 101

Institutional Research and Planning

Mission 104
History 104
Goals 104
Major Projects 105
Completed Requests 105
IRP Website 106



The University



The University

<http://www.westga.edu/>

History

The University of West Georgia, a four-year institution of the University System of Georgia, is a co-educational, residential, liberal arts institution located in Carrollton, Georgia.

Carrollton, the seat of Carroll County, is about an hour drive from Atlanta. According to the 2007 Census estimate, Carrollton has a regional population of 111,954 with retail shopping, medical, educational, entertainment, financial, and recreational services, making it one of Georgia's fastest growing industrial areas.

The University of West Georgia was established in 1906 as the Fourth District Agricultural and Mechanical School, one of twelve such institutions by the State of Georgia between 1906 and 1917. Twenty five years later, an Act by the Board of Regents of the University System of Georgia changed Carrollton A&M School to West Georgia College, a junior college. Dr. Irvine S. Ingram, who had been principal of the A&M School, was named the institution's first president. In 1939, the College was authorized by the Board of Regents to add a three-year program in elementary education.

In 1957, the institution was authorized to confer the B.S. degree in education, making it a four-year college within the University System of Georgia. Two years later, West Georgia College added the Bachelor of Arts degree in English, history, and mathematics.

During the following years, West Georgia College became one of the fastest growing institutions of higher learning in the South. From an enrollment of 576 in 1957, the institution's student body reached a milestone of 11,500 in Fall 2009. West Georgia offers twelve undergraduate degrees with majors in 60 different fields.

In 1967, the Board of Regents authorized the establishment of a graduate program at the master's level. Ten master's degrees are offered in 33 areas of study. The Specialist in Education degree is offered in 9 areas of study and a doctoral degree in 3 areas.

In 1983, the Board of Regents approved the External Degree Program as a cooperative effort between Dalton College and West Georgia. Since its inception, close to 400 degrees have been conferred through the Center. The Board of Regents in 1988 approved the opening of Newnan Center, a joint effort involving the Newnan-Coweta Chamber of Commerce and other businesses, civic and educational leaders in the area. With an enrollment of 540 in Fall 2009, the Newnan Center provides access to higher education for residents of Coweta County.

In June 1996, the Board of Regents of the University System of Georgia officially changed the name of West Georgia College to the State University of West Georgia and to the University of West Georgia in 2005.

The University's growth is accommodated by the following additions:

Fall 2009, the University of West Georgia opened a 262-bed Greek Village. The Village includes a community building, outdoor basketball and volleyball court, outdoor green space, parking, and half a dozen six-bed townhouses. Each house has a living/chapter room, kitchen, laundry facilities, single and double bedrooms, and semi-private bathrooms. The university now has 3,045 beds available to the students.

The Coliseum opened January 2009; a 6,500 capacity facility is the home for UWG Wolves basketball and volleyball programs and the Department of Health, Physical Education and Sports Studies. Its schedule includes athletic and community events, classes, concerts, corporate meetings, local high school graduations, and UWG orientations.

September 2009, West Georgia Wolves opened its 9,000-seat football stadium. The facility, located on approximately 250 acres, will be completed in stages to include locker rooms, weight and training rooms, several athletic programs, and offices for the Athletics Department.

The Campus

The campus is a unique blend of old and new. Boasting numerous cultivar of trees, shrubs, and flowers, the campus is dotted with structures of the early 1900s, as well as buildings exemplifying the most contemporary modes of architecture.

West Georgia began as an A&M school in 1906 on the three-block-long expanse shaded by old oak, elm, and maple trees that surrounds a number of brick buildings and stretches into a semi-circle on front, or "Old Campus."

A modern academic complex composed of a library, social science, humanities, and math-physics buildings lies beyond the "Old Campus." A business school annex was added in 1985. Other buildings in the area include a three-story student center, a three-story campus center, and a health services building. A performing arts center, containing two theatres, a black box and a main stage, which seat 250 and 455 respectively was completed in 1989.

The central focal point of the University's core curriculum classes is situated across from the Performing Arts Center—the Technology-enhanced Learning Center (TLC). The \$20 million, 110,000-square-foot, three-story, state-of-the-art building was completed in the summer of 2001. Academic departments housed in the TLC include Computer Science, English, Chemistry, and History. The defining feature of the TLC is the "smart" classrooms, or studio classrooms, in which every student has a computer at his or her desk. Other features include three lecture halls, a seminar room for each department,



one general-purpose computer lab, and several chemistry labs, in addition to faculty offices. In the lecture halls, students have a place to plug in their laptops, and in the lobby area, computer screens offer students a chance for a quick revision of their assignments between classes. Labs and lectures are integrated, and experiments are done on computers. The University believes that this high-tech teaching method increases student learning and is proud to be one of only three institutions in the University System of Georgia to use this technology.

Much of the University's other recent physical development occurred on the westside of campus. The Education Center, a structure unique in the University System, contains five large lecture-demonstration rooms, which by moving the sliding partitions; serve as a 1,000-seat auditorium. It also features an instructional materials center, television and sound recording studios, an audiovisual laboratory and dark room, counseling rooms, group observation rooms, study carrels, and other areas for independent study.

Adjacent to the Education Center is the Biology Building, a facility with numerous laboratories, lecture halls, and the latest scientific equipment. The Education Annex, a 42,000-square-

foot facility, opened in 1995. This facility houses education and nursing faculty offices, classrooms, laboratories, and the campus day-care center.

A complete renovation of the University's baseball complex was made possible by a gift from the E. Woodfin Cole family in Carrollton. The 20,000-square-foot, two-level Murphy Fieldhouse provides offices for all athletic personnel, a football locker room, academic support area, sports information offices, a sports medicine area, and meeting rooms.

Kennedy Interfaith Chapel and Bonner House are two of the oldest buildings on campus. The Chapel was owned first by the Episcopal Church and later by the Catholic Church. When the local parish built a new church, its members donated the Chapel to the University for non-denominational use. In 1964, after the Chapel was moved to the campus, the late Robert F. Kennedy dedicated it to the memory of his brother, the late President John F. Kennedy.

The Bonner House, constructed in 1843 as a plantation home, is the oldest building on campus. The frame colonial structure has served various purposes through the years.

Source: UWG Undergraduate Catalog 2010-2011

Campus Map



Mission of the University of West Georgia

The University of West Georgia seeks to achieve preeminence in providing educational excellence in a personal environment through an intellectually stimulating and supportive community for its students, faculty, and staff.

Purpose

The University, a charter member of the University System of Georgia, is a comprehensive, residential institution providing selectively focused undergraduate and graduate public higher education primarily to the people of West Georgia. The University is also committed to regional outreach through a collaborative network of external degree centers, course offerings at off-campus sites and an extensive program of continuing education for personal and professional development. Opportunities for intellectual and personal development are provided through quality teaching, scholarly inquiry, creative endeavor, and service for the public good.

Essential Activities

West Georgia educates students in a range of disciplinary, interdisciplinary, and professional programs at the baccalaureate level. It also offers a significant number of graduate programs at the master's and educational specialist's levels. The University has a commitment to education at the doctoral level in the field of education as well as other selected areas. In addition to being accredited as an institute of higher education, the University maintains national accreditation or recognition in most undergraduate and graduate fields of specialization.

The University of West Georgia pursues its purpose through the following activities:

- Instruction in general education and the promotion of life-long learning that together lay the foundations of what is essential to being an educated person.
- Faculty-directed student research and professional activities that complement classroom learning through learning by doing and reflection on doing.
- Faculty research, scholarship, and creative endeavors that promote knowledge, enhance professional development, contribute to quality instruction, and provide for significant student involvement and field-based experience.
- Educational opportunities such as the Honors College and, for extraordinary high school-aged students, the Advanced Academy of Georgia that serve the needs of exceptionally prepared students.
- Systematic investigation of teaching and student learning that fosters innovation in teacher, professional, and pre-professional preparation.
- The use and exploration of existing and emerging technologies that improve opportunities for faculty and student learning.
- A broad range of public service activities and proactive partnerships that: promote more effective utilization of human and natural resources; contribute to economic, social and technical development; and

enhance the quality of life within the University's scope of influence.

- Student services, including outstanding first-year experiences, which increase opportunities for academic success and personal development and enhance the climate of campus life.

Values

The University of West Georgia values the following:

- High-quality general education, undergraduate and graduate programs, that:
 - 1) Are grounded in a strong liberal arts curriculum;
 - 2) Impart broad knowledge and foster critical understanding needed for intellectual growth, personal and social responsibility, cultural and global literacy and lifelong learning;
 - 3) Emphasize disciplinary rigor;
 - 4) Foster the development of effectiveness in communication critical and independent thinking, problem solving, and the use of information resources and technology; and
 - 5) Create a learning community dedicated to instructional excellence where close student-faculty interaction enhances both teaching and learning for a diverse and academically well-prepared student body.
- Cultivate of a personal environment.
- Affirmation of the equal dignity of each person by valuing cultural, ethnic, racial, and gender diversity in students, faculty, and staff.
- Practices that embody the ideals of an open democratic society and that cultivate an environment of collegiality.

These commitments culminate in educational experiences that foster the development of thoughtful and productive leaders and citizens who make a positive impact throughout an increasingly global society.

Vision Statement for the University of West Georgia Year 2000 and Beyond

The University of West Georgia will be a leader within the University System of Georgia in providing educational excellence in a personal environment.

The University of West Georgia will seek to create for students from various backgrounds every possible avenue to intellectual achievement, personal development, and leadership potential without compromising academic excellence. The University will maintain close contact with all people of the region, be responsive to their needs while raising their aspirations, and generating a more highly educated populace.

The University of West Georgia will be recognized for excellence in teaching and learning, research, and public service in undergraduate, graduate, and continuing education. The University will be recognized as being fundamental to the educational, social, cultural, technological, and economic advancement of the region and state.

Specifically, the University of West Georgia will be characterized by:

- Educational Excellence evidenced by outstanding educational experiences, national and regional recognition of selected programs, faculty who excel in their disciplines, superior staff support, and an increasingly capable student body. At West Georgia, teaching, research, and service will be intricately intertwined and supportive of each other.
- A Safe, Supportive Community committed to enhancing learning, through close contracts between students and faculty, small classes taught by senior faculty whenever possible and through dedicated staff who help provide a vibrant campus life.
- An Outstanding, Diverse Faculty and Staff who demonstrate effective communication and teaching skills; utilize new technologies and innovative strategies to enhance student learning; and exhibit the highest standards of intellectual achievement, research, and continuing growth.
- Educational Opportunities for a Wide Range of Academically-Prepared Students that include a strong academic knowledge base for the development of leadership skills and life-long learning. The University of West Georgia will help ensure its students future success by developing the ability of individuals to access, interpret, analyze using current technology and make use of relevant facts, information, and knowledge to think critically, solve problems, work with, and communicate effectively with other. West Georgia will develop the whole individual so that as alumni they will continue to be contributing members of their families, institutions, communities, state, nation, and world.
- Educational Opportunities for Exceptional Students: West Georgia will build a reputation for having an Honors College with a distinctive liberal arts curriculum and additional peaks of excellence in selected undergraduate and graduate majors and professional programs, with student involvement in faculty research, and themes that run across the curriculum, such as communication, leadership development, interdisciplinary studies, critical thinking, and problem solving.

- A Region-Wide Learning Community that Engages and Inspires Traditional and Non-Traditional Students to become educated persons with global and multi-cultural perspectives and advanced technological knowledge. The University will help develop both ethical principles and intellectual flexibility for the future and will celebrate and energize the human spirit through respecting and supporting individual differences in learning styles, identities, and personal/professional goals.
- Pro-active Partnerships with Public and Private Schools and Other Educational Institutions, Business, Industry, Government, and Cultural and Social Organizations in order to analyze, synthesize, evaluate, predict, and respond to changing state and regional needs, to support Georgia's educational, economic, and cultural development, and to ensure graduates' readiness for the present and future.
- A Unified, Clearly Focused, University with each part contributing to and understanding how every other part contributes to the mission of the University and to the larger society.

The Strategic Plan, 2010 - 2015

UWG's Four Strategic Guiding Principles

1. Academic Programs Balancing Liberal Arts with Professional Preparation
2. A Campus that is Safe, Engaging, and Exciting
3. Steady and Intelligent Enrollment and Resource Growth
4. Meaningful Engagement with Off-campus Communities

The Strategic Plan is designed to shape the University of West Georgia for the next five years in such a way as to place it as a destination university, particularly among peer universities in the state of Georgia and among those universities in the nation granting doctoral degrees in programs that balance liberal education with professional preparation. In addition to this bold pledge of shaping, creating, and maintaining such a distinctive educational mission as expressed in its degree programs, it also promises to be a leader in campus safety and campus life. That is to say, West Georgia will be guided by a commitment to a safe and engaging campus. West Georgia predicts a growing enrollment, and the University is committed to a steady and smart growth that together with careful resource management will enhance our primary mission of academic excellence in a personal environment. Finally, we are committed to our external community from Atlanta to India to Japan, but we are quite mindful of our local community of Carrollton, Georgia, and will build on all of our current obligations of giving students opportunities for service work in the community even as we invite the community into our campus and thus work together to develop our neighborhood as a recognizable university village.

The Four Guiding Principles and Twelve Goals

Guiding Principle 1: The University will develop and support a distinctive set of quality academic programs ranging from bachelors to doctorates that blend the best of professionalized liberal education, experiential learning, and individual transformation.

- Goal 1: Every undergraduate academic program will demonstrate a distinctive blending of liberal education, professional competencies, and experiential learning, preparing students to be ethically responsible and civically engaged professionals in the global economy of the 21st century.
- Goal 2: Every undergraduate student will be advised to take advantage of one of multiple available learning communities. Learning communities that are available to students will include communities organized by living arrangement, by year in program, by other co-curricular associations – Honors Program, Advanced Academy, Band, Athletics, Debate, or program in the major.
- Goal 3: The University will endeavor to increase enrollment in and graduation from graduate programs, including doctoral programs, that have as their mark a practical professional purpose, experiential learning opportunities, and an intellectual program informed by a foundation of liberal education.

Guiding Principle 2: Every responsible agency of the University will be dedicated to creating a safe, supportive, and engaging campus life.

- Goal 4: The University will maintain an environment that is safe and conducive to learning.
- Goal 5: The University community will provide a balanced variety of cultural, recreational, leisure, and informal education programming opportunities for faculty, staff, and students that enhance the quality of campus life.
- Goal 6: All units will strive to improve the compensation and working environment of faculty and staff in order to recruit and retain the best individuals.

Guiding Principle 3: The steady enrollment growth over the next five years will be managed to enhance the University's dedication to educational excellence in a personal environment.

- Goal 7: The University will endeavor to increase our overall enrollment to 14,500 by the year 2015.
- Goal 8: With our enrollment growth West Georgia will remain committed to the following targets of academic quality: faculty-student ratio of 18 to 1; average class size of 29; full-time to part-time faculty ratio of 4.4 to 1.
- Goal 9: West Georgia will develop several new facilities to improve quality along with meeting capacity demands due to enrollment growth, such as new classroom space for Nursing and Art.

Guiding Principle 4: The University will increase its fundraising and community service to match the needs of all of our stakeholders and communicate our story effectively.

- Goal 10: Capital Campaign: The Development Office will prepare for a capital campaign to assist in meeting the long-term needs of the University of West Georgia
- Goal 11: Communication and Marketing: The Office of University Communications and Marketing (UCM) will internally and externally promote the missions and goals of the strategic plan. This will be achieved by aligning the institution's integrated marketing plan (advertising, visual identity standards, web presence, media relations, etc.) with the strategic plan.
- Goal 12: Community Relations: The University will engage the local community educationally, culturally and recreationally.

Accreditations and Affiliations

The University of West Georgia is accredited by the Commission on Colleges of the Southern Association of Colleges and Schools (1866 Southern Lane, Decatur, Georgia 30033-4097; Telephone number 404-679-4501) to award bachelor's, master's, education specialist's and doctorate degrees. Accreditations also include the following:

- *The Association to Advance Collegiate Schools of Business (International)*
- *American Chemical Society*
- *American Speech-Language Hearing Association*
- *Commission on Collegiate Nursing Education*
- *Computing Accreditation Commission of the Accreditation Board for Engineering and Technology*
- *Council for Humanistic Transpersonal Psychologies*
- *National Association of Schools of Arts and Design*
- *National Association of Schools of Music*
- *National Association of Schools of Public Affairs and Administration*
- *National Association of Schools of Theatre*
- *National Council for Accreditation of Teacher Education*

Organizations in which the University holds institutional membership include the American Council on Education, the American Association of State Colleges and Universities, the American Association of Colleges for Teacher Education, the Conference of Southern Graduate Schools, the Georgia Association of Colleges, the National Association for Foreign Student Affairs, the National Business Education Association, and the National Collegiate Honors Council.

The Honors College

The Honors Program was initiated at West Georgia College in 1975. The Board of Regents, June 1999, elevated the honors program to the Honors College, making it the first in the State of Georgia. The Honors College includes the Advanced Academy of Georgia, the Select Student Program, HOPE-ACCEL program for jointly enrolled high school juniors and seniors, and the Intercollegiate Debate Program.

The Honors College does not award degrees, but offers a distinctive curriculum featuring special sections of courses required in the core curriculum and junior and senior seminars. The courses are designed to offer more opportunities for research in preparation for graduate or professional school and place more responsibility on the individual student.

Admission to the Honors College is open to entering freshmen who meet two of the following three criteria: (1) a combined SAT score of at least 1200 or ACT Composite score of 26, (2) a minimum score of 610 on the Critical Reading portion of the SAT or an ACT English score of 27, or (3) a high school grade point average of 3.5 or higher. The College is also open to any student who has completed 15 or more hours at West Georgia with an overall GPA of 3.2 or higher. Students must enter no later than the beginning of their sophomore year. Honors courses are open on a space available basis to any student with a cumulative GPA of 3.2 or higher who has completed 15 or more credit hours.

Student Affairs and Enrollment Management

The Division of Student Affairs and Enrollment Management complements the University academic programs by offering a variety of educational services, developmental programs, and activities designed to enrich the students' college life.

EXCEL: Center for Academic Success, is devoted solely to the academic success of all students with special programs for first year, transfer, and undecided.

EXCEL offers the following services:

- Tutoring in all the undergraduate core curriculum classes;
- Academic advising for all students who not decided on a major as well as certain pre-majors, such as criminology, mass communication, nursing, and psychology.
- Free Major and career exploration program to help find the best fit major and future career path.

Multicultural Achievement Program (MAP) is housed in the EXCEL Center and assists minority students academically. MAP provides an array of programs and services to meet the needs of minority students:

- Certified peer mentors, who are campus leaders and academic achievers, work with small groups of new students while servicing as role models, helping freshmen establish good study habits, and being a referral agent to other campus resources.
- Seminars related to achieving academic success and enhancing cultural awareness.
- A second year program is offered which guides students with exploring majors and careers and provides opportunities for second year students to engage in a variety of learning opportunities awareness.
- Minority alumni serve as mentors to juniors and seniors and lead career seminars.
- The academic progress of students is monitored, and individual academic coaching sessions are available in note-taking, time management and various study skills.



West Georgia's fine arts departments offer many opportunities ranging from theatre to opera to exhibitions for student performance and cultural enrichment. Both musical and theatrical productions are scheduled year-round. The Concert Choir, Chamber Singers, Marching Band, and Opera Workshop are available to students interested in music. Several areas in the Humanities Building are used for student, faculty, and traveling art exhibits.

The *Center for Student Involvement* facilitates student engagement, leadership, and involvement through a variety of programs and services. The office coordinates the registration process for over 130 student organizations which involve 4,989 members and provide approximately 800 programs and activities in 2009-2010. The staff provides advisement for a vibrant Social Greek system and governing councils (National Pan-Hellenic Council, the National Panhellenic Council, and the Interfraternity Council), that involved over 10 percent of the undergraduate population. The staff also advised the Student Activities Council, which provides a number of diverse student programs including Homecoming, Welcome Back Week, and Spring Fling, as well as comedy, music and multicultural programs. The office coordinates the annual Campus Activities Awards Program and provides numerous leadership training programs during the year through the UWG Lead (Leadership Education and Development) Program. Leadership programs included Lead Weekend, Leadership in the Wilderness, an Emerging Leaders Program and the popular Leadership To Go.

The *Student Development Center* provides career, mental health, and academic counseling, plus support services for disabled students. The Center provides training and supervision for select graduate students. In the past year, approximately 600 students were seen for personal, academic and career counseling. More than 1,000 students participate in group and developmental programs offered each year. Six of the eight counselors on staff are licensed and hold a specialist or doctoral degree. The Center also provides 680 disabled students with assistance in physical and academic access to campus and classroom programs.

The *University Bookstore* carries all textbooks, materials, and school supplies necessary for students' use in their classes. The Bookstore offers a wide selection of imprinted gifts and clothing, office supplies, general books, and art supplies. It is also a UPS pick-up station. New and used textbooks are available online at www.bookstore.westga.edu.

Source: UWG Undergraduate Catalog 2010-2011

The mission of *University Recreation (UREC)* is to inspire, empower, and educate the university community by providing comprehensive, high-quality, student-focused programs, facilities, and services that create community, connectivity, and develop exceptional leaders who value and embody healthy lifestyles. The department is responsible for operations of the state-of-the-art Campus Center which has the following amenities: fitness center, four basketball courts, climbing wall, two group exercise studios, indoor track, game room, meeting spaces, and locker rooms. UREC also coordinates the following recreational programs: Fitness/Wellness, Intramural Sports, and Outdoor Recreation. Throughout the course of the year, over 300,000 swipes are recorded at the Campus Center turnstiles. Approximately 50 group exercise classes a week are taught including: step aerobics, Spinning, yoga, Pilates, Zumba, and boot camp; over 200 personal training sessions are conducted; and specialized programs such as UWG's Biggest Loser are coordinated. 120 Intramural Sports teams participate in the following sports: flag football, soccer, basketball, softball, tennis, and ultimate frisbee, with the on-campus champions of many of those sports moving on to compete at the state, regional, or national level. The Outdoor Recreation program leads 12-15 local and regional trips per year. Recent trips include: backpacking, caving, sea kayaking, whitewater rafting, rock climbing and hiking. UREC also operates a Rental Center where members of the Campus Center can check out canoes, bikes, kayaks, etc. to utilize in conjunction with our programs or on their own.

Source: University Recreation



The *Department of Career Services* provides a comprehensive career development and employment program for all students and alumni of West Georgia. Available services include job search/career coaching, resume referral to employing organizations, student employment opportunities, and career-related learning experiences through professional practice programs.

Specific services, which the department offers, include:

- Career Employment assistance (job listing services, job search seminars, special career events, and other services).
- Student Employment (on and off campus part-time, seasonal, temporary jobs);
- Professional Practice Program opportunities, including internships and cooperative education (major and/or career related work experience);
- Cooperative Education provides a well-balanced combination of college study and periods of hands-on experience in a work setting related to the student's major and/or career goals.
- Internships provide a type of community-based learning experience and prepare students for services in their chosen field of study. Internships aid the student to develop their intellectual capacity, understand and appreciate democratic institutions, and stimulate students toward the examination and development of personal and professional values.

Career Services		
<i>Student Employment Program</i>	<i>FY 2009</i>	<i>FY 2010</i>
Student Visits to Office	4,663	7,478
Student Referrals	4,724	10,389
Placements	1,138	602
Wages Generated	\$3,272,857	\$1,790,624
Volunteer Services Office		
Student Visits to Office ¹	531	666
Student Referrals	504	782
Student Opportunities	138	154
Professional Practice		
Counseling Contacts ¹	531	1,128
Student Referrals	297	209
Student Placement	87	116
Participating Employers	71	59
Wages Generated	\$223,995	\$245,242
Career Employment Program		
Student Visits to Office	1,103	818
Resume Referrals	481	467
Job Postings	1,532	1,314
Overall Employer Recruitment	274	210

¹Combined number of students for Volunteer Services and Professional Practice Program

Source: *Career Services*

The *Department of Housing and Residence Life* provides a living/learning community environment that complements the educational process of the University. Ten residence halls house more than 3,000 West Georgia students. Unmarried freshmen that do not reside with parents within a thirty-mile radius of the University are required to live on campus. We offer co-ed and single gender housing options for students who live on campus. Co-ed residence halls have separate areas for men and women, typically separated by wings. Residence halls provide students with the convenience of being close to campus life and its activities as well as comfortable and attractive surroundings. On campus living provides each student with the community living experience, which fosters the development of disciplined minds, social conscientiousness, and responsibility for governing hall affairs. In addition, the department offers a variety of social, educational, and recreational programs which are provided to promote individual growth and development.

Student Housing Occupancy			
<i>Residence Hall</i>	<i>Type</i>	<i>Fall 2009</i>	<i>Fall 2010</i>
Arbor View	Co-ed	523	583
Bowdon	Co-ed	300	295
Boykin	Women	164	174
Downs*	Co-ed	281	193
Gunn	Co-ed	81	76
Strozier Complex**	Co-ed	164	117
Tyus	Co-ed	135	173
University Suites	Co-ed	513	593
Watson	Women	285	270
Greek Village		261	219
Level			
Academy		81	40
Freshman		1,812	1,780
Sophomore		611	479
Junior		122	244
Senior		81	140
Graduate		0	10
Total		2,707	2,693

* 96 beds taken offline due to renovation

** 54 beds taken offline due to renovation

Source: *Housing and Residence Life*

Health Services provides diagnosis, first aid, and treatment of minor or short-term acute illnesses or injuries under the supervision of a physician. Health Services is opened from 8:00 a.m. to 6:00 p.m. Monday through Thursday and 8:00 a.m. to 5:00 p.m. Friday. Students are referred to other medical personnel or facilities for special services such as x-ray, surgery, and dentistry. Medication necessary for treatment is usually available at the Center. In addition, many tests performed in the Health Center laboratory are covered by the student's health fee. Health Services saw 27,167 patients and filled 52,372 prescriptions in Fiscal Year 2010.

Intercollegiate Athletics

University of West Georgia (UWG) Athletics is a member of NCAA Division II and the Gulf South Conference (GSC), the largest Division II conference in the nation. The university currently offers 12 varsity sports: baseball, men's and women's basketball, men's and women's cross country, football, men's and women's golf, women's soccer, women's softball, women's tennis and women's volleyball.

UWG proudly boasts athletic facilities that rank among the finest of any Division II program in the nation. Since 2009 six teams have moved into new, state-of-the-art home venues. The Coliseum serves as home to the men's and women's basketball and volleyball teams; softball and soccer have moved into new, on-campus home stadiums, while UWG football now plays its home games in University Stadium.

The new homes for football, soccer, and softball are part of the sprawling UWG Athletic Complex. Beyond the new playing sites, this facility includes a women's field house for the soccer and softball programs, a soccer practice field, football practice fields, and the soon-to-be completed Athletic Office Building that includes locker room and training room facilities. Beyond, plans are on the drawing board for a new baseball facility and other improvements within the coming years.

West Georgia teams are no strangers to success. From a 1974 Men's Basketball National Championship to the 1982 NCAA Football, UWG Athletics continues to a strong contender in Gulf South Conference and NCAA events. Men's Basketball has participated in eight NCAA Regional Tournaments and 13 GSC post-season events since 1994. In 2002 the team won both the GSC and NCAA South Region titles, thus earning the school's first ever berth in the Division II Elite Eight. Baseball captured the GSC title in 1998, earning the right to host the NCAA South Central Regional. UWG captured the tournament to earn a berth in the Division II World Series. Beyond, the football program won GSC titles in 1997, 1998 and 2000, and has advanced to the NCAA Division II Playoffs on four separate occasions.

Women's volleyball earned GSC Tournament berths from 2004-2007, winning the school's first GSC title and advancing to the NCAA Tournament in 2007. Women's basketball has a lengthy record of accomplishment, including two GSC titles (1992, 1994) and advancing to the NCAA Tournament in many occasions, most recently in 2008.

Both men's and women's cross country teams enjoy long records of GSC success, combining for eight league crowns since the mid-1990s. In 2000 the women's cross country team captured the NCAA South Region title, and in 2003 claimed the league's individual title. Both programs continue to be among the GSC's best and appear regularly in the regional rankings.

Women's soccer and men's and women's golf have made a big contribution to the university's winning tradition. The soccer program has advanced three times to the GSC Tournament. Both golf teams have enjoyed success in regular season and GSC Tournament play, including the men's team twice (2007, 2009) qualifying a player for the NCAA Regional Tournament.

Newly launched 2010-11, following a 10-year absence from the university, is women's tennis. Prospects for future success are very bright.

Athletics has always played a major role in campus life at the University of West Georgia. The commitment is now stronger than ever to field successful teams with talented student-athletes who succeed in both the classroom and on the field of play.

Source: Intercollegiate Athletics

The Administration



Administrative Organization

The University System of Georgia

The University System of Georgia's Board of Regents was created in 1931 during a reorganization of Georgia State government. This Act unified Georgia public higher education under one governing and management authority.

The Board of Regents is a State constitutional board responsible for the governance, control, and management of its member institutions. The governor appoints members to the Board, who each serves seven years. The Board is composed of 18 members, five are appointed from the state-at-large and one from each of the 13 congressional districts. The Board elects a chancellor who serves as chief executive officer and chief administrative officer of the University System.

The Board oversees 35 colleges and universities: four research universities, two regional universities, 13 state universities, seven state colleges, and nine two-year colleges. These institutions enroll more than 270,000 students and employ approximately 11,000 faculty and 28,600 staff to provide teaching and related services to students and their communities.

The Board of Regents of the University System of Georgia is located at:

270 Washington Street, SW
Atlanta, Georgia 30334, U.S.A.

University System of Georgia Strategic Plan

Transforming the System, Changing Lives, Strengthening the State

The Board of Regents has utilized strategic planning for a number of years to guide its policy development and annual budget requests. The Board's current Strategic Plan was adopted in August 2007.

The Plan has a theme of building capacity in every aspect of the System's operations. The Plan will direct actions that transform the System, change lives, and strengthen the State.

The Plan defines six broad goals designed to ensure the investment that the citizens of Georgia have made in their system of public higher education continues to serve the needs of future generations.

For more information on the University System's Strategic Plan, go to: <http://www.usg.edu/regents/strategic/>

The six strategic goals:

1. Renew excellence in undergraduate education to meet students' 21st century educational needs.
2. Create enrollment capacity to meet the needs of 100,000 additional students by 2020.
3. Increase the USG's participation in research and economic development to the benefit of a global Georgia.

4. Strengthen the USG's partnerships with the State's other education agencies.
5. Maintain affordability so that money is not a barrier to participation in the benefits of higher education.
6. Increase efficiency, working as a System.

The Chancellor and the Central Office staff are responsible for administering the affairs of the University System of Georgia under the general direction of the Board of Regents.

University of West Georgia

The President is responsible to the Chancellor for the operation and management of the University. The President's Advisory Committee (PAC) is the immediate advisory body to the President. This Committee consists of persons in administrative positions reporting directly to the President and others as the President believes will provide advice for the orderly, effective, and efficient administration of the Committee's affairs. Appointments are annual at the beginning of the fiscal year.

The Administrative Council is the chief advisory body for administrative activities in the academic operations of the University. It consists of the Vice President for Academic Affairs (chair), Dean of Students and Vice President for Student Services, Deans of the Graduate School, Arts and Sciences, Business, Education and Honors College; the Director of Institutional Research and Planning; Directors of Continuing Education/Public Services, Information Technology Services and the Library; the chair of the Institutional Studies and Planning Committee of the Faculty Senate; and the President of the Student Government Association.

The Planning Council is an advisory body to the President for long-range development of the University, and is expected to oversee the creation of a variety of plans extending over three or more years into the future. Members of the Council are appointed by the President from the administration, faculty, students, alumni and the community. It will have no policy-making powers.

The Technology Coordination Council creates, assesses, and coordinates technical standards, procedures and processes that implement UWG's information technology strategic policies; it coordinates the activities of UWG's information technology groups for the best use of information technology across campus.

Source: 2009-10 Undergraduate Catalog and Statutes-1/16/07

University System of Georgia

Institutions

Abraham Baldwin Agricultural College (ABAC)
 Albany State University
 Armstrong Atlantic State University
 Atlanta Metropolitan College
 Augusta State University
 Bainbridge College
 Clayton State University
 College of Coastal Georgia
 Columbus State University
 Dalton State College
 Darton College
 East Georgia College
 Fort Valley State University
 Gainesville State College
 Georgia College and State University
 Georgia Gwinnett College
 Georgia Highlands College
 Georgia Institute of Technology
 Georgia Perimeter College
 Georgia Southern University
 Georgia Southwestern State University
 Georgia State University
 Gordon College
 Kennesaw State University
 Macon State College
 Medical College of Georgia
 Middle Georgia College
 North Georgia College and State University
 Savannah State University
 South Georgia College
 Southern Polytechnic State University
 University of Georgia
 University of West Georgia
 Valdosta State University
 Waycross College

Independent Research Unit

Skidaway Institute of Oceanography

2010-2011 Board of Regents

Larry R. Ellis, Atlanta	State-at-Large
Robert F. Hathcher, Macon	State-at-Large
Felton Jenkins, Madison	State-at-Large
<i>Vice Chair*</i>	
Donald M. Leebern, Jr., McDonough	State-at-Large
Larry Walker, Perry	State-at-Large

By District

James A. Bishop, Brunswick	First
Doreen Stiles Poitevint, Bainbridge	Second
C. Thomas Hopkins, Jr., Griffin	Third
Wanda Y. Rodwell, Stone Mountain	Fourth
Frederick E. Cooper, Atlanta	Fifth
Kessel Stelling, Jr., Alpharetta	Sixth
Richard L. Tucker, Duluth	Seventh
W. Mansfield Jennings, Jr., Hawkinsville	Eighth
James R. Jolly, Dalton	Ninth
William NeSmith, Jr., Athens	Tenth
Willis J. Potts, Jr., Rome	Eleventh
<i>Chair*</i>	
Benjamin J. Tarbutton, III, Sandersville	Twelfth
Kenneth R. Bernard, Jr., Douglasville	Thirteenth

University System of Georgia Administrative Personnel

Chancellor's Office

Erroll B. Davis	<i>Chancellor</i>
Sabrina Thompson	<i>Executive Assistant to the Chancellor</i>

Internal Audit and Compliance

John Fuchko, III	<i>Chief Audit Officer and Associate Vice Chancellor</i>
------------------	--

Academic Affairs

Dr. Susan Herbst	<i>Executive Vice Chancellor and Chief Academic Officer</i>
Dr. Melinda Spencer	<i>Chief of Staff for Academic Affairs</i>
Dr. Felita Williams	<i>Assistant Vice Chancellor for Academic Planning</i>
Dr. Marci M. Middleton	<i>Associate Vice Chancellor, Student Affairs</i>
Ms. Tonya Lam	<i>Vice Chancellor, Educator Preparation and Innovation</i>
Mr. Bob Cernock	<i>Associate Vice Chancellor for Data Administration/Chief Data Officer</i>
Dr. Lynne Weisenbach	<i>Vice Chancellor, Educator Preparation and Innovation</i>
Dr. Linda M. Noble	<i>Associate Vice Chancellor for Faculty Affairs</i>
Mr. Bin Robinson	<i>Executive Director</i>
Mr. Curtis A. Carver, Jr.	<i>Vice Chancellor and chief Information Officer</i>
Dr. Susan Campbell Lounsbury	<i>Assistant Vice Chancellor for Research and Policy Analysis</i>
Ms. Virginia Michelich	<i>Assistant Vice Chancellor for Student Achievement</i>
Ms. Tonya Lam	<i>Associate Vice Chancellor Student Affairs</i>

Administrative and Fiscal Affairs

Mr. Rob Watts	<i>Chief Operating Officer</i>
Ms. Linda M. Daniels	<i>Vice Chancellor, Facilities</i>
Ms. Usha Ramachandran	<i>Vice Chancellor for Fiscal Affairs</i>
Dr. Lamar Veatch	<i>Assistant Vice Chancellor, Georgia Public Library Service</i>
Mr. Wayne Guthrie	<i>Vice Chancellor, Human Resources</i>
Mr. J. Burns Newsome	<i>Vice Chancellor for Legal Affairs and Secretary to the Board</i>
Ms. Shelley C. Nickel	<i>Associate Vice Chancellor, Planning and Implementation</i>

External Affairs

Mr. Tom Daniel	<i>Senior Vice Chancellor</i>
Ms. Christina Hobbs	<i>Business Development Manager</i>
Ms. Deborah Scott	<i>Legislative Projects Director</i>
Mr. Terry Durden	<i>Assistant Vice Chancellor, Economic Development</i>
Ms. Amanda D. Seals	<i>Executive Director, Government Relations</i>
Ms. John Millsaps	<i>Associate Vice Chancellor, Media and Publications</i>

Source: University System of Georgia
www.usg.edu

University of West Georgia Administration

Officers of General Administration

Dr. Beheruz N. Sethna	President
Dr. Peter Hoff	<i>Interim Provost and Vice President Academic Affairs</i>
Mr. James R. Sutherland	<i>Vice President for Business and Finance</i>
Dr. Melanie McClellan	<i>Vice President for Student Services</i>
Dr. Michael Ruffner	<i>Vice President for University Advancement</i>
Academic Officers	
Dr. N. Jane McCandless (I)	<i>Dean College of Arts and Sciences</i>
Dr. Faye McIntyre	<i>Dean Richards College of Business</i>
Dr. Kim Metcalf	<i>Dean College of Education</i>
Dr. Charles W. Clark	<i>Dean Graduate School</i>
Dr. Kathryn Grams	<i>Dean School of Nursing</i>
Dr. Donald Wagner	<i>Dean Honors College and Director Extended Degree Programs</i>
Administrative Officers	
Dr. Robert S. Johnson	<i>Director Admissions</i>
Mr. Jimmy L. Agan	<i>Director Continuing Education</i>
Ms. Kimberly Jordan	<i>Director Financial Aid</i>
Ms. Kathy Kral	<i>Chief Information Officer</i>
Dr. Ebenezer F. Kolajo	<i>Director Institution Research and Planning</i>
Ms. Lorene Flanders	<i>Dean University Libraries</i>
Ms. Donna Haley	<i>Registrar</i>

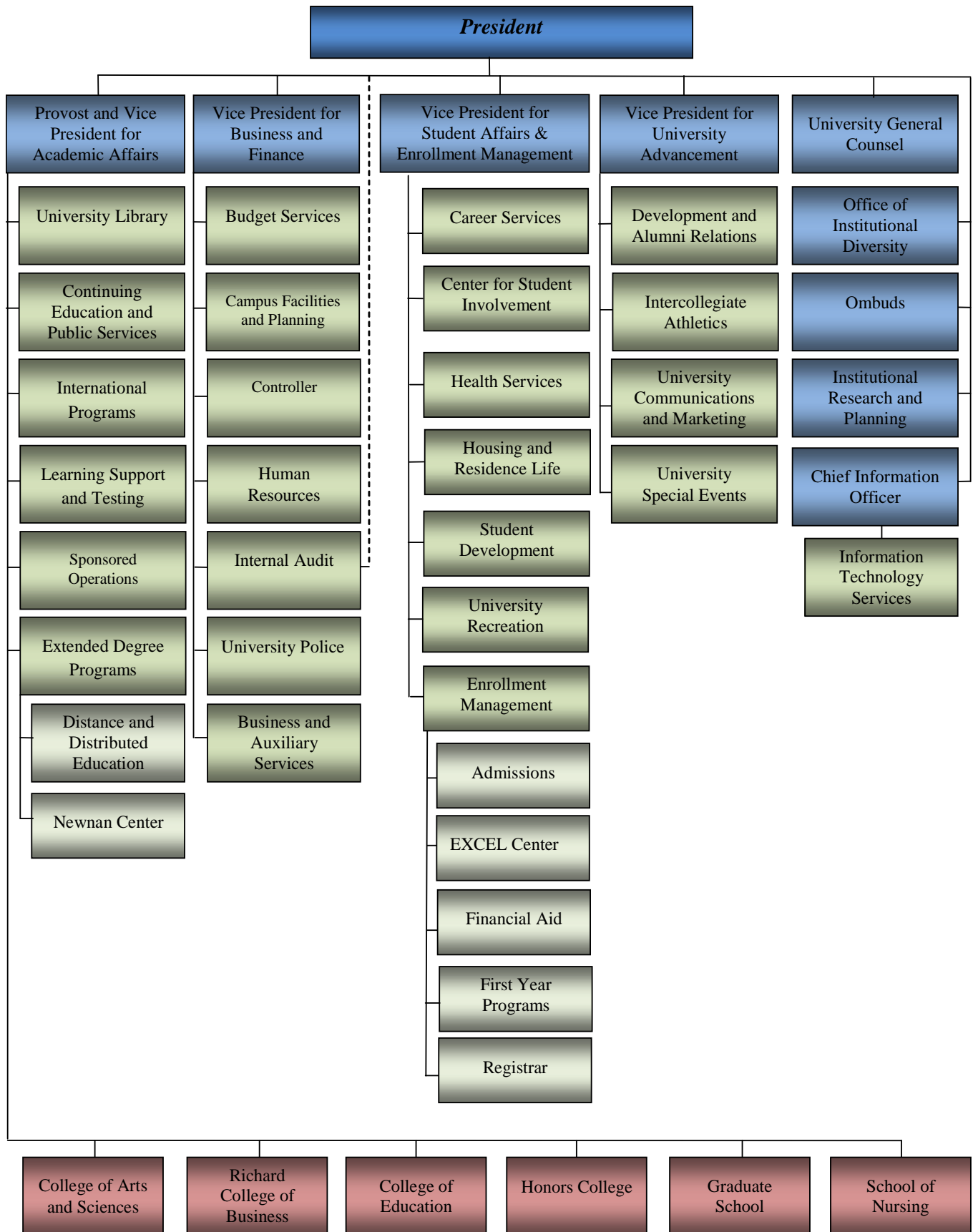
Instructional Department and Chairpersons

College of Arts and Sciences	
Dr. Marjorie Snipes	<i>Anthropology</i>
Mr. Kevin Shunn	<i>Art</i>
Dr. Henry Zot	<i>Biology</i>
Dr. Spencer Slattery	<i>Chemistry</i>
Dr. Adel Abunawass	<i>Computer Science</i>
Dr. Randy J. Hendricks (I)	<i>English and Philosophy</i>
Dr. Aran MacKinnon	<i>Foreign Languages and Literatures</i>
Dr. Curtis L. Hollabaugh	<i>Geosciences</i>
Dr. H. Steve Goodson (I)	<i>History</i>
Dr. Pauline Gagnon (I)	<i>Mass Communications and Theatre Arts</i>
Dr. Bruce M. Landman	<i>Mathematics</i>
Dr. Kevin R. Hibbard	<i>Music</i>
Dr. Bobby E. Powell	<i>Physics</i>
Dr. Robert M. Schaefer	<i>Political Science and Planning</i>
Dr. Donadrian Rice	<i>Psychology</i>
Dr. Laurel Holland (I)	<i>Sociology and Criminology</i>
Richards College of Business	
Dr. James R. Colley	<i>Accounting and Finance</i>
Dr. David J. Boldt	<i>Economics</i>
Dr. Thomas W. Gainey	<i>Management</i>
Dr. Salil M. Talpade	<i>Marketing and Real Estate</i>
College of Education	
Dr. Debrah B. Jenkins, (I)	<i>Collaborative Support and Intervention</i>
Dr. Donna Harkins	<i>Early Learning and Childhood Education</i>
Dr. Elizabeth Bennett	<i>Educational Innovation</i>
Dr. Frank Butts	<i>Leadership and Applied Instruction</i>

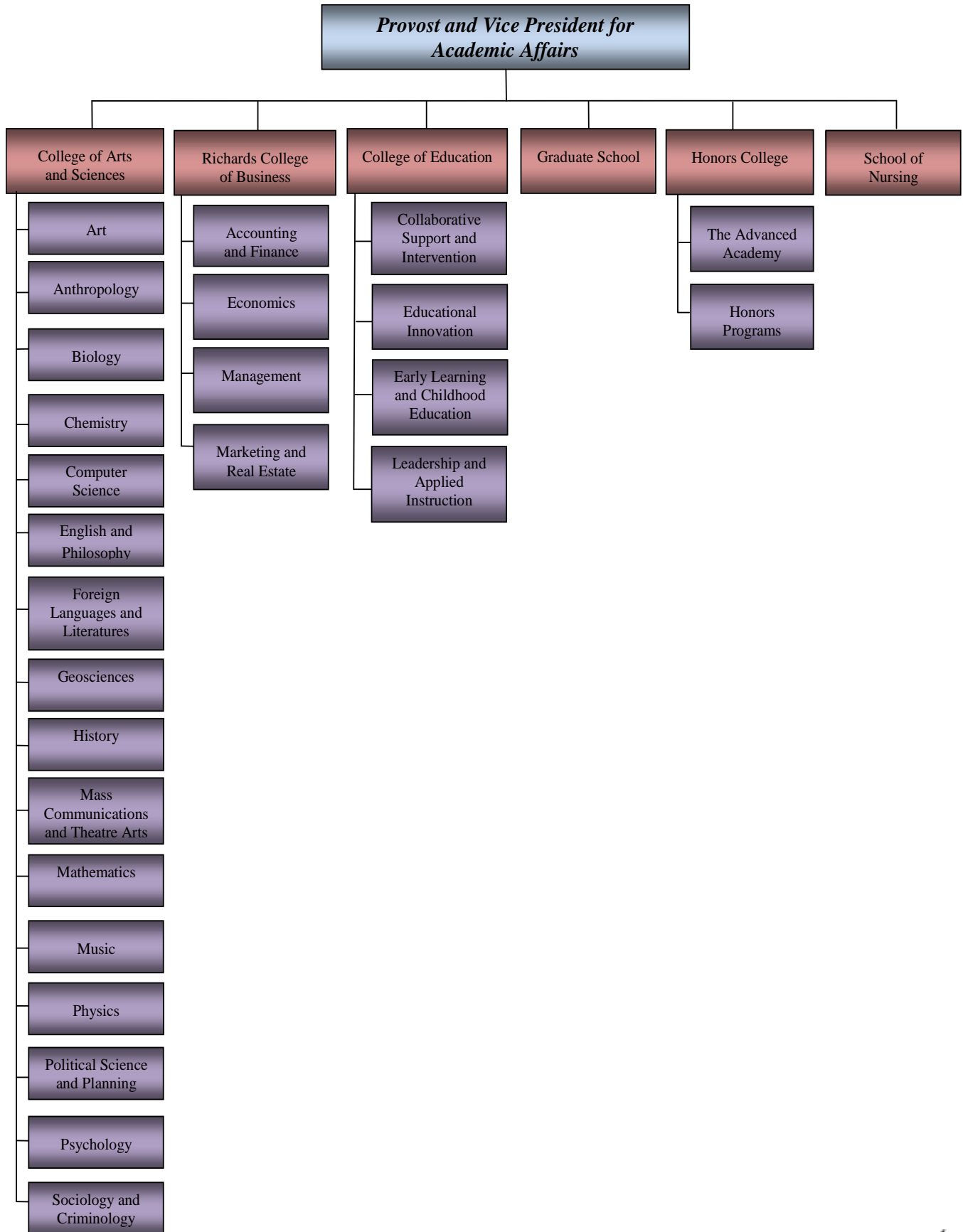
(I)-Interim

Source: Faculty and Staff Directory 2010-2011

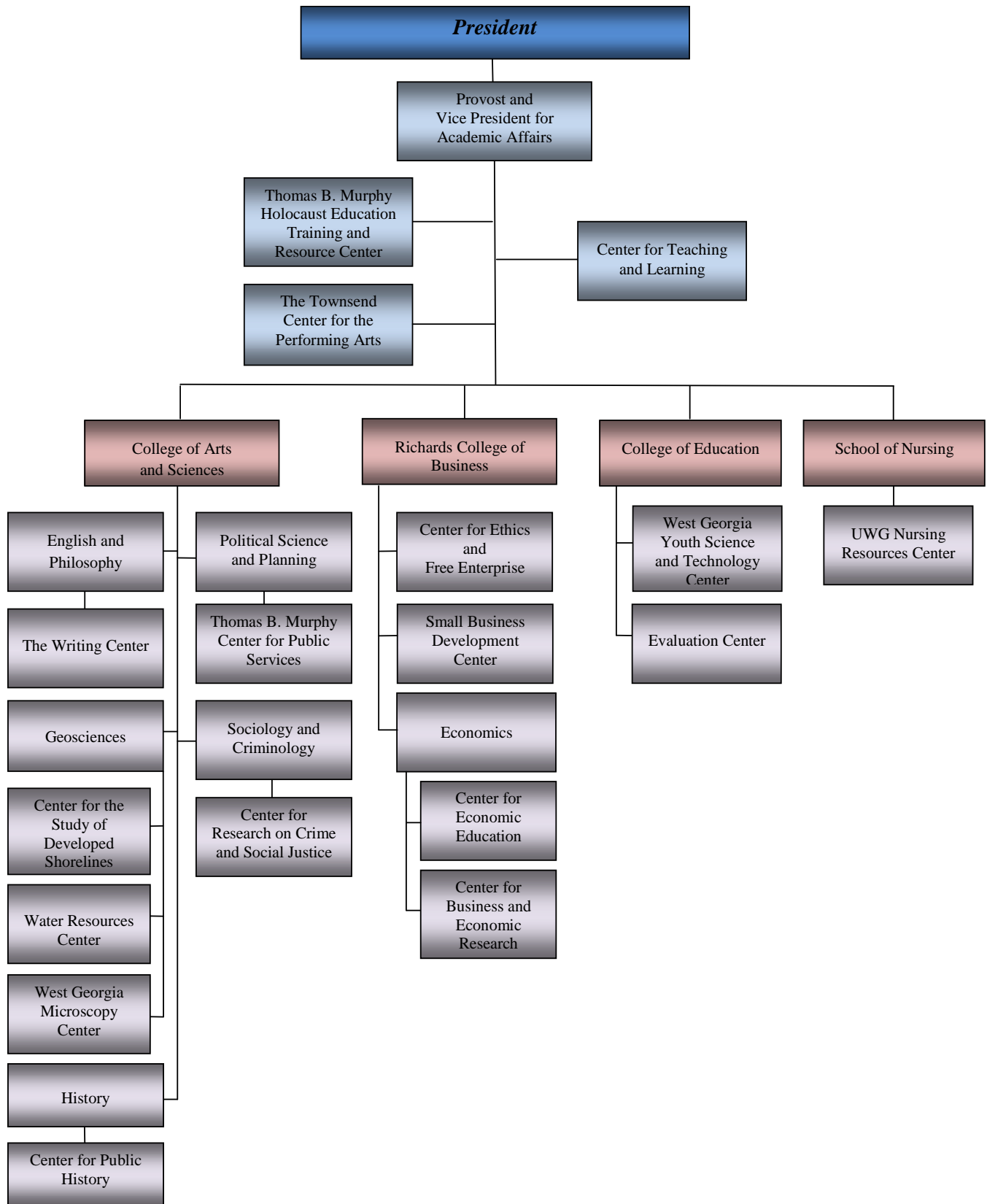
UWG Administration Units



UWG Academic Units



UWG Centers



Enrollment and Credit Hour Production



Detailed Composition of UWG Student Body Fall 2001 - 2010

	2001	2002	2003	2004	2005	2006	2007	2008	2009	2010
Classification										
Freshman	3,127	3,208	3,264	3,316	3,258	3,247	3,424	3,554	3,516	3,293
Sophomore	1,502	1,613	1,662	1,652	1,750	1,812	1,902	2,031	2,117	2,205
Junior	1,200	1,362	1,447	1,548	1,492	1,589	1,581	1,648	1,810	1,915
Senior	1,283	1,340	1,515	1,613	1,698	1,666	1,768	1,867	2,025	2,152
Graduate	1,786	2,012	2,210	1,937	1,808	1,688	1,835	2,022	1,878	1,576
Joint Enrollment	68	92	107	94	93	113	124	86	109	90
**Others	64	48	50	56	55	48	43	44	45	52
<i>Total Enrollment</i>	<i>9,030</i>	<i>9,675</i>	<i>10,255</i>	<i>10,216</i>	<i>10,154</i>	<i>10,163</i>	<i>10,677</i>	<i>11,252</i>	<i>11,500</i>	<i>11,283</i>
Geographic										
Georgia Residents	8,654	9,296	9,887	9,858	9,752	9,783	10,270	10,865	11,113	10,884
Out-of-state	263	275	260	237	272	267	277	254	256	262
Other Countries	113	104	108	121	130	113	130	133	131	137
Gender (total students)										
Female	5,757	6,144	6,561	6,446	6,376	6,406	6,700	7,075	7,182	7,051
Male	3,273	3,531	3,694	3,770	3,778	3,757	3,977	4,177	4,318	4,232
Ethnicity										
Hispanic/Latino									355	348
Non-Hispanic									9,529	9,394
Ethnicity Unknown/Undeclared									1,616	1,541
Race										
African/Black American	1,910	2,151	2,314	2,367	2,342	2,461	2,707	2,837	2,920	2,959
American Indian	23	20	24	24	22	22	29	32	44	36
Asian or Pacific Islander	105	114	139	161	155	161	188	192		
Asian									181	163
Native Hawaiian/Pacific Islander									7	10
Caucasian/White	6,801	7,176	7,505	7,363	7,281	7,136	7,142	7,364	7,059	6,422
Hispanic	95	101	127	151	171	199	214	272		348
Multiracial	96	113	146	150	183	184	217	259	84	152
Other/Undeclared							180	296	1,205	1,193
New Students										
Beginning Freshmen	1,568	1,637	1,740	1,719	1,656	1,709	1,828	1,998	1,916	1,825
**Transfers	510	576	634	615	577	591	602	609	661	601
Graduate Students	342	405	389	289	288	317	327	387	385	287
Joint Enrollment	44	64	77	67	74	80	90	54	79	64
*Others	35	28	26	37	36	31	29	39	44	48
<i>Total</i>	<i>2,499</i>	<i>2,710</i>	<i>2,866</i>	<i>2,727</i>	<i>2,631</i>	<i>2,728</i>	<i>2,876</i>	<i>3,087</i>	<i>3,085</i>	<i>2,825</i>
Attendance Status										
Full-time Undergraduate	5,985	6,374	6,741	6,899	6,921	7,002	7,415	7,833	8,126	8,123
Full-time Graduate	317	372	419	381	422	360	453	468	549	529
<i>Total</i>	<i>6,302</i>	<i>6,746</i>	<i>7,160</i>	<i>7,280</i>	<i>7,343</i>	<i>7,362</i>	<i>7,868</i>	<i>8,301</i>	<i>8,675</i>	<i>8,652</i>
Part-time Undergraduate	1,259	1,289	1,304	1,380	1,425	1,473	1,427	1,397	1,496	1,584
Part-time Graduate	1,469	1,640	1,791	1,556	1,386	1,328	1,382	1,554	1,329	1,047
<i>Total</i>	<i>2,728</i>	<i>2,929</i>	<i>3,095</i>	<i>2,936</i>	<i>2,811</i>	<i>2,801</i>	<i>2,809</i>	<i>2,951</i>	<i>2,825</i>	<i>2,631</i>

*Transients are included in this category.

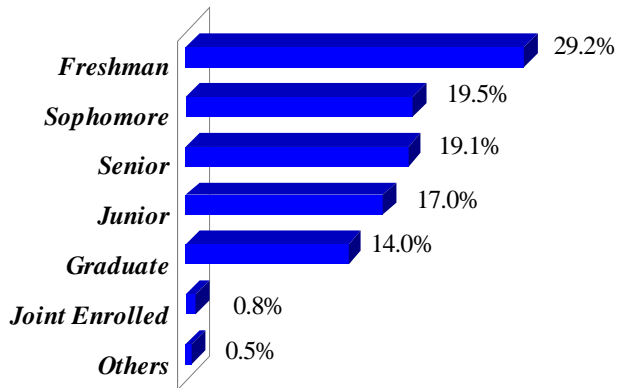
**Category includes transfer freshmen, sophomores, juniors, and seniors.

New Race/Ethnicity IPEDS reporting methods effective Summer 2009.

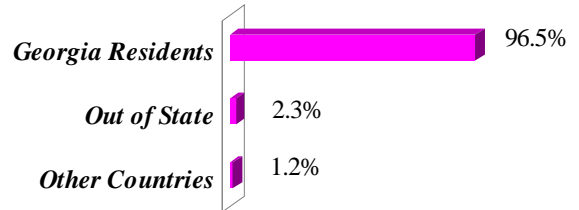
Source: Office of the Registrar and Institutional Research and Planning

Composition of the Student Body Fall 2010

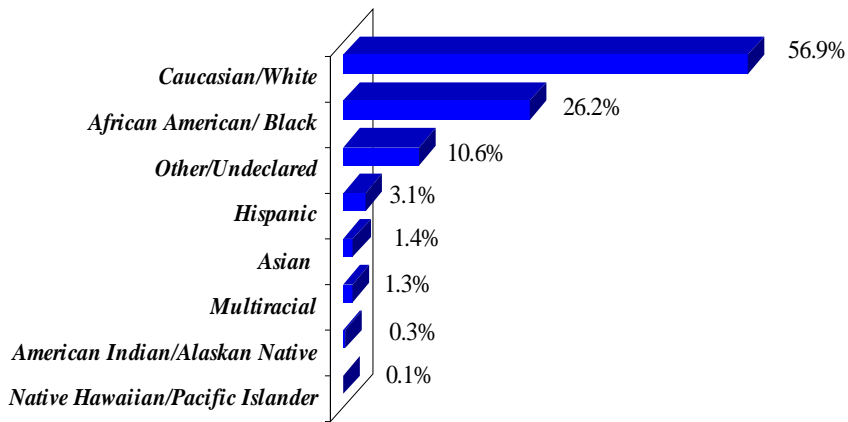
Classification



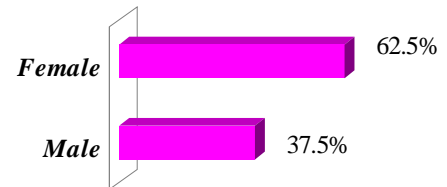
Geographic Origin



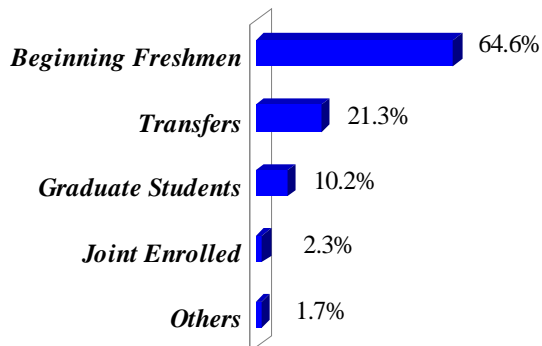
Ethnicity



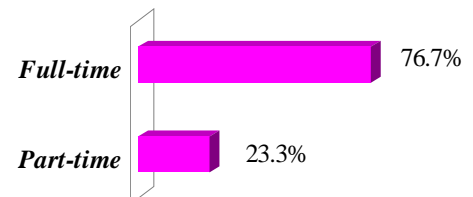
Gender



New Students



Attendance Status



Geographic Origin of Students by Classification Fall 2010

<i>Service Area Primary Counties</i>	<i>Classification</i>		<i>Total Enrollment</i>
	<i>Undergraduate</i>	<i>Graduate</i>	
Bartow	81	21	102
Butts	25	1	26
Carroll	1,390	249	1,639
Catoosa	40	6	46
Chattooga	30	3	33
Cherokee	130	25	155
Coweta	1,011	155	1,166
Dade	8	2	10
Dawson	13	1	14
Douglas	922	127	1,049
Fannin	7	0	7
Fayette	428	68	496
Floyd	135	37	172
Forsyth	76	9	85
Gilmer	10	0	10
Gordon	47	15	62
Haralson	291	35	326
Harris	33	5	38
Heard	91	6	97
Henry	272	33	305
Lamar	14	3	17
Meriwether	24	10	34
Monroe	5	0	5
Murray	26	2	28
Muscogee	46	15	61
Newton	86	9	95
Paulding	405	79	484
Pickens	6	2	8
Pike	13	3	16
Polk	113	18	131
Rockdale	101	12	113
Spalding	51	5	56
Talbot	1	0	1
Troup	127	30	157
Upson	17	3	20
Walker	56	2	58
Whitfield	68	7	75
Total	6,199	998	7,197

<i>Five County Metro Area</i>	<i>Classification</i>		<i>Total Enrollment</i>
	<i>Undergraduate</i>	<i>Graduate</i>	
Clayton	230	40	270
Cobb	605	138	743
Dekalb	535	55	590
Fulton	539	124	663
Gwinnett	588	42	630
Total	2,497	399	2,896

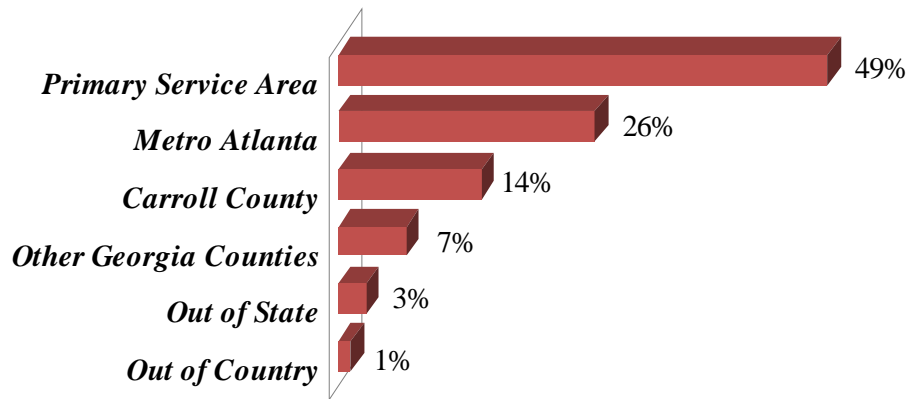
<i>Other Georgia Counties*</i>	624	75	699
<i>Out of State*</i>	271	83	354
<i>Out of Country</i>	116	21	137
Total	1,011	179	1,190

*edited 7/15/2011

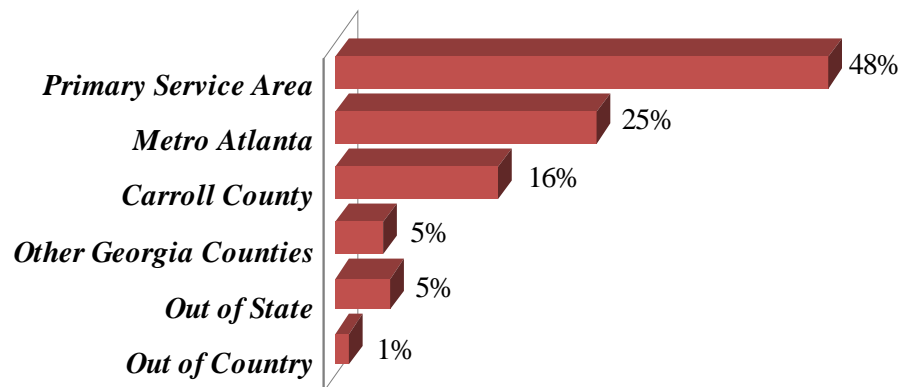
Source: Institutional Research and Planning

Geographic Origin of Students Fall 2010

Undergraduate Students*



Graduate Students*



*edited 7/15/2011

UWG Admissions Data

Fall 2001 - 2010

The Office of Admissions administers the undergraduate admissions policies and procedures of the University, evaluates eligibility of undergraduate applicants for admission and recommends policies governing admission of undergraduates. The Office of Admissions also coordinates

a comprehensive student recruitment program for the University. The Graduate School has its own admissions policies and procedures to admit students into the various degree programs available at West Georgia.

	2001	2002	2003	2004	2005	2006	2007	2008	2009	2010
All Students										
Students Enrolled	9,030	9,675	10,255	10,216	10,154	10,163	10,677	11,252	11,500	11,283
New Students Enrolled	2,499	2,710	2,866	2,727	2,631	2,728	2,876	3,087	3,085	2,825
New Students Enrolled	28%	28%	28%	27%	26%	27%	27%	27%	27%	25%
Graduate Students										
Enrolled	1,786	2,012	2,210	1,937	1,808	1,688	1,835	2,022	1,878	1,576
New Graduate Students Enrolled	342	405	389	289	288	317	327	387	385	287
New Graduate Students Enrolled	19%	20%	18%	15%	16%	19%	18%	19%	21%	18%
Undergraduate Students										
Enrolled	7,244	7,663	8,045	8,279	8,346	8,475	8,842	9,230	9,622	9,707
New Undergraduate Students Enrolled	2,157	2,305	2,477	2,438	2,343	2,411	2,549	2,700	2,700	2,538
New Undergraduate Students Enrolled	30%	30%	31%	29%	28%	28%	29%	29%	28%	26%
All Undergraduates										
Undergraduate Applications Submitted	5,672	5,692	6,316	6,471	6,676	7,331	7,361	7,571	7,528	7,876
Undergraduate Applicants Accepted	3,424	3,597	3,954	3,940	3,771	3,842	4,004	4,483	4,429	4,424
Undergraduate Applicants Enrolled	2,113	2,241	2,400	2,371	2,269	2,331	2,459	2,646	2,621	2,474
Undergraduate Applicants Accepted	60%	63%	63%	61%	56%	52%	54%	59%	59%	56%
Accepted and Enrolled	62%	62%	61%	60%	60%	61%	61%	59%	59%	56%
New Freshman Students										
New Freshman Applicants	4,453	4,451	4,848	4,953	5,175	5,696	5,803	6,159	5,981	6,361
Freshman Applicants Accepted	2,671	2,830	3,026	3,031	2,859	2,937	3,089	3,589	3,444	3,460
New Freshman Students Enrolled	1,568	1,637	1,740	1,719	1,656	1,709	1,828	1,998	1,916	1,825
New Freshman Applicants Accepted	60%	64%	62%	61%	55%	52%	53%	58%	58%	54%
New Freshman Accepted and Enrolled (Yield)	59%	58%	58%	57%	58%	58%	59%	56%	56%	53%
New Transfer Students										
New Transfer Applicants	1,219	1,241	1,468	1,518	1,501	1,635	1,558	1,412	1,547	1,515
Transfer Applicants Accepted	753	767	928	909	912	905	915	894	985	964
New Transfer Students Enrolled	545	604	660	652	613	622	631	648	705	649
New Transfer Applicants Accepted	62%	62%	63%	60%	61%	55%	59%	63%	64%	64%
New Transfer Accepted and Enrolled	72%	79%	71%	72%	67%	69%	69%	72%	72%	67%
Scores										
Mean SAT Critical Reading	502	506	508	508	515	507	508	508	503	494
Mean SAT Math	497	502	500	498	506	501	502	501	496	488
Mean SAT Writing	-	-	-	-	-	-	484	483	482	477
Mean High School GPA First-time Full-time	2.98	2.98	2.96	2.97	3.01	3.00	3.09	3.03	3.04	2.98

Source: Undergraduate Admissions Office, Registrar, and Institutional Research and Planning

First-time Entering Freshmen

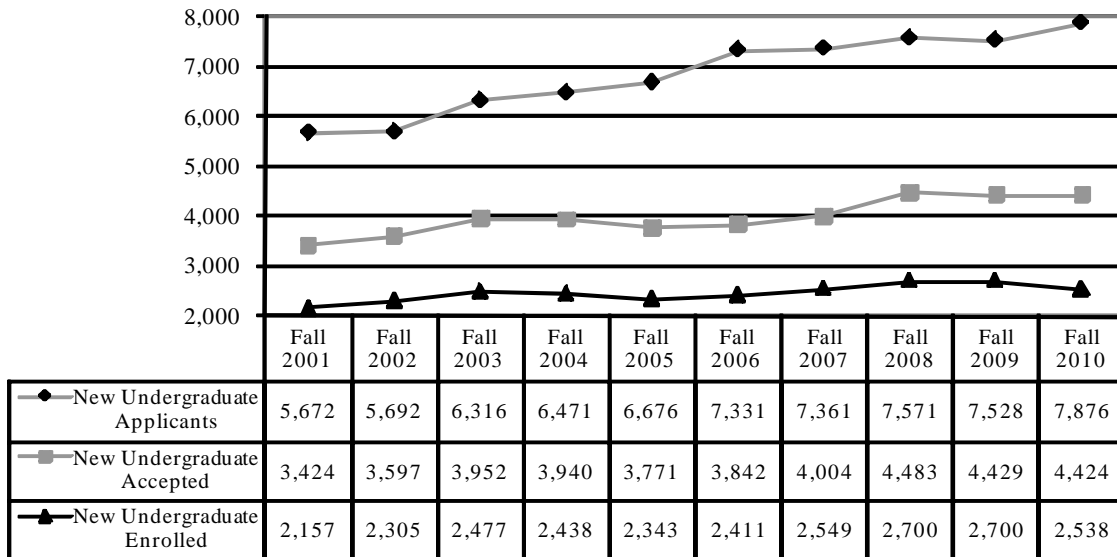
Entering Freshmen Average SAT Scores*



*SAT Scores are from the re-centered scale.

Note: Effective Fall 2007 SAT Verbal became SAT Critical Reading and SAT Writing was added. Scores are taken from first-time, full-time freshmen students.

Undergraduate Applicants' Profile



Total FTE for Undergraduate and Graduate Students (FY 2005 - 2011)

<i>Academic Years</i>	<i>Undergraduate</i>	<i>Graduate</i>	<i>Total</i>
2004-2005			
Summer 2004	1,823	1,048	2,871
Fall 2004	7,691	1,207	8,898
Spring 2005	7,102	1,205	8,307
Total	16,616	3,460	20,076
2005-2006			
Summer 2005	1,822	968	2,790
Fall 2005	7,761	1,146	8,907
Spring 2006	7,055	1,066	8,121
Total	16,638	3,180	19,818
2006-2007			
Summer 2006	1,807	900	2,707
Fall 2006	7,875	1,067	8,942
Spring 2007	7,298	1,072	8,370
Total	16,980	3,039	20,019
2007-2008			
Summer 2007	2,031	945	2,976
Fall 2007	8,260	1,202	9,462
Spring 2008	7,673	1,275	8,948
Total	17,964	3,422	21,386
2008-2009			
Summer 2008	2,282	1,130	3,412
Fall 2008	8,650	1,339	9,989
Spring 2009	8,000	1,274	9,274
Total	18,932	3,743	22,675
2009-2010			
Summer 2009	2,453	1,030	3,483
Fall 2009	9,022	1,287	10,309
Spring 2010	8,412	1,210	9,622
Total	19,887	3,527	23,414
2010-2011			
Summer 2010	2,589	872	3,461
Fall 2010	9,085	1,128	10,213
Spring 2011	8,390	1,061	9,451
Total	20,064	3,061	23,125

Note: FTE for all years represents the most current definition set by the Board of Regents (Total full-time undergraduate students taking 12 or more hours + total full-time graduate students taking 9 or more hours) + (Total part-time undergraduate credit hours/12 + total part-time graduate credit hours/9)

Source: Institutional Research and Planning

Total Enrollment and Student Credit Hour (SCH) by Level (FY 2005 - 2011)

Academic Years	Lower Level			Upper Level			Graduate Level			Total	
	Head Count	SCH	Avg. SCH	Head Count	SCH	Avg. SCH	Head Count	SCH	Avg. SCH	SCH	FTE
2004-2005											
Summer 2004	1,374	12,974	9.4	1,984	10,685	5.4	1,638	8,715	5.3	32,374	2,871
Fall 2004	5,105	72,657	14.2	3,174	33,992	10.7	1,937	9,011	4.7	115,660	8,898
Spring 2005	4,337	64,165	14.8	3,399	34,634	10.2	1,881	9,433	5.0	108,232	8,307
Total		149,796			79,311			27,159		256,266	20,076
2005-2006											
Summer 2005	1,331	12,422	9.3	1,989	11,226	5.6	1,480	8,092	5.5	31,740	2,790
Fall 2005	5,146	73,511	14.3	3,200	32,963	10.3	1,808	8,800	4.9	115,274	8,907
Spring 2006	4,282	63,354	14.8	3,412	33,901	9.9	1,682	8,425	5.0	105,680	8,121
Total		149,287			78,090			25,317		252,694	19,818
2006-2007											
Summer 2006	1,389	12,305	8.9	1,975	10,893	5.5	1,374	7,496	5.5	30,694	2,707
Fall 2006	5,207	75,008	14.4	3,268	33,539	10.3	1,688	8,198	4.9	116,745	8,942
Spring 2007	4,437	66,827	15.1	3,501	34,527	9.9	1,661	8,439	5.1	109,793	8,370
Total		154,140			78,959			24,133		257,232	20,019
2007-2008											
Summer 2007	1,581	14,313	9.1	2,177	11,689	5.4	1,444	8,101	5.6	34,103	2,976
Fall 2007	5,490	77,852	14.2	3,352	36,101	10.8	1,835	9,745	5.3	123,698	9,462
Spring 2008	4,693	71,303	15.2	3,598	36,092	10.0	1,917	10,592	5.5	117,987	8,948
Total		163,468			83,882			28,438		275,788	21,386
2008-2009											
Summer 2008	1,741	15,706	9.0	2,362	13,262	5.6	1,695	9,941	5.9	38,909	3,412
Fall 2008	5,714	82,945	14.5	3,516	37,266	10.6	2,022	11,078	5.5	131,289	9,989
Spring 2009	4,865	73,199	15.0	3,755	39,434	10.5	1,910	10,362	5.4	122,995	9,274
Total		171,850			89,962			31,381		293,193	22,675
2009-2010											
Summer 2009	1,766	16,619	9.4	2,567	14,393	5.6	1,567	8,805	5.6	39,817	3,483
Fall 2009	5,784	85,052	14.7	3,838	40,609	10.6	1,878	10,531	5.6	136,192	10,309
Spring 2010	5,000	75,042	15.0	4,078	42,292	10.4	1,748	9,838	5.6	127,172	9,622
Total		176,713			97,294			29,174		303,181	23,414
2010-2011											
Summer 2010	1,864	17,668	9.5	2,666	14,966	5.6	1,296	7,411	5.7	40,045	3,461
Fall 2010	5,636	84,024	14.9	4,071	41,753	10.3	1,576	9,181	5.8	134,958	10,213
Spring 2011	4,815	74,145	15.4	4,261	42,089	9.9	1,475	8,803	6.0	125,037	9,451
Total		175,837			98,808			25,395		300,040	23,125

Note: FTE for all years represents the most current definition set by the Board of Regents (Total full-time undergraduate students taking 12 or more hours + total full-time graduate students taking 9 or more hours) + (Total part-time undergraduate credit hours/12 + total part-time graduate credit hours/9)

Source: Institutional Research and Planning

Student Credit Hour by Level (FY 2005 - 2011) College of Arts and Sciences

<i>Academic Years</i>	<i>Lower Level</i>	<i>Upper Level</i>	<i>Graduate Level</i>	<i>Total</i>
2004-2005				
Summer 2004	9,739	4,935	816	15,490
Fall 2004	62,230	15,316	1,760	79,306
Spring 2005	53,632	16,318	1,832	71,782
Total	125,601	36,569	4,408	166,578
2005-2006				
Summer 2005	9,597	5,399	974	15,970
Fall 2005	63,449	15,688	2,055	81,192
Spring 2006	52,569	17,149	1,848	71,566
Total	125,615	38,236	4,877	168,728
2006-2007				
Summer 2006	9,456	5,679	730	15,865
Fall 2006	64,780	17,124	1,850	83,754
Spring 2007	56,623	18,252	1,871	76,746
Total	130,859	41,055	4,451	176,365
2007-2008				
Summer 2007	11,226	5,811	778	17,815
Fall 2007	67,720	18,830	1,978	88,528
Spring 2008	60,750	18,945	1,913	81,608
Total	139,696	43,586	4,669	187,951
2008-2009				
Summer 2008	12,365	6,040	917	19,322
Fall 2008	72,205	16,432	1,802	90,439
Spring 2009	62,068	17,320	1,899	81,287
Total	146,638	39,792	4,618	191,048
2009-2010				
Summer 2009	13,037	5,222	814	19,073
Fall 2009	73,125	17,195	2,158	92,478
Spring 2010	63,719	18,872	2,052	84,643
Total	149,881	41,289	5,024	196,194
2010-2011				
Summer 2010	14,240	6,024	636	20,900
Fall 2010	71,879	17,631	2,113	91,623
Spring 2011	63,334	18,135	2,056	83,525
Total	149,453	41,790	4,805	196,048

Note: The Board of Regents' new FTE definition is student-centered; therefore college FTE levels can not be calculated

Source: Institutional Research and Planning

Student Credit Hour by Level (FY 2005 - 2011) Richards College of Business

<i>Academic Years</i>	<i>Lower Level</i>	<i>Upper Level</i>	<i>Graduate Level</i>	<i>Total</i>
2004-2005				
Summer 2004	1,713	4,638	678	7,029
Fall 2004	4,767	9,033	844	14,644
Spring 2005	4,980	8,999	857	14,836
Total	11,460	22,670	2,379	36,509
2005-2006				
Summer 2005	1,419	4,955	680	7,054
Fall 2005	4,617	8,712	750	14,079
Spring 2006	5,043	8,413	682	14,138
Total	11,079	22,080	2,112	35,271
2006-2007				
Summer 2006	1,359	4,435	538	6,332
Fall 2006	4,725	8,237	616	13,578
Spring 2007	4,737	8,596	699	14,032
Total	10,821	21,268	1,853	33,942
2007-2008				
Summer 2007	1,632	4,743	643	7,018
Fall 2007	4,827	8,723	785	14,335
Spring 2008	5,205	8,989	1,130	15,324
Total	11,664	22,455	2,558	36,677
2008-2009				
Summer 2008	1,886	5,919	819	8,624
Fall 2008	5,615	9,272	1,237	16,124
Spring 2009	5,422	9,982	1,478	16,882
Total	12,923	25,173	3,534	41,630
2009-2010				
Summer 2009	1,526	6,148	1,035	8,709
Fall 2009	5,470	10,420	1,317	17,207
Spring 2010	5,418	10,350	1,390	17,158
Total	12,414	26,918	3,742	43,074
2010-2011				
Summer 2010	1,418	5,703	1,059	8,180
Fall 2010	5,366	10,105	1,077	16,548
Spring 2011	4,924	10,234	1,001	16,159
Total	11,708	26,042	3,137	40,887

Note: The Board of Regents' new FTE definition is student-centered; therefore college FTE levels can not be calculated

Source: Institutional Research and Planning

Student Credit Hour by Level (FY 2005 - 2011) College of Education

<i>Academic Years</i>	<i>Lower Level</i>	<i>Upper Level</i>	<i>Graduate Level</i>	<i>Total</i>
2004-2005				
Summer 2004	1,310	1,112	7,221	9,643
Fall 2004	3,842	9,643	6,407	19,892
Spring 2005	3,706	9,317	6,744	19,767
Total	8,858	20,072	20,372	49,302
2005-2006				
Summer 2005	1,298	872	6,438	8,608
Fall 2005	3,875	8,563	5,995	18,433
Spring 2006	3,941	8,339	5,895	18,175
Total	9,114	17,774	18,328	45,216
2006-2007				
Summer 2006	1,052	779	6,228	8,059
Fall 2006	3,989	8,178	5,732	17,899
Spring 2007	3,942	7,679	5,869	17,490
Total	8,983	16,636	17,829	43,448
2007-2008				
Summer 2007	1,095	1,135	6,680	8,910
Fall 2007	3,698	8,548	6,982	19,228
Spring 2008	3,720	8,158	7,549	19,427
Total	8,513	17,841	21,211	47,565
2008-2009				
Summer 2008	1,299	1,303	8,205	10,807
Fall 2008	3,811	8,810	7,822	20,443
Spring 2009	4,140	9,403	6,820	20,363
Total	9,250	19,516	22,847	51,613
2009-2010				
Summer 2009	1,618	1,703	6,948	10,269
Fall 2009	3,967	10,051	6,811	20,829
Spring 2010	4,041	9,902	6,231	20,174
Total	9,626	21,656	19,990	51,272
2010-2011				
Summer 2010	1,396	1,855	5,716	8,967
Fall 2010	4,370	10,630	5,830	20,830
Spring 2011	4,016	10,345	5,593	19,954
Total	9,782	22,830	17,139	49,751

Note: The Board of Regents' new FTE definition is student-centered; therefore college FTE levels can not be calculated

Source: *Institutional Research and Planning*

Student Credit Hour by Level (FY 2008 - 2011) School of Nursing

<i>Academic Years</i>	<i>Lower Level</i>	<i>Upper Level</i>	<i>Graduate Level</i>	<i>Total</i>
2008-2009	SCH	SCH	SCH	SCH
Summer 2008				0
Fall 2008	0	2,752	217	2,969
Spring 2009	0	2,728	165	2,893
Total	0	5,480	382	5,862
2009-2010				
Summer 2009	0	1,320	8	1,328
Fall 2009	336	2,943	245	3,524
Spring 2010	0	3,168	165	3,333
Total	336	7,431	418	8,185
2010-2011				
Summer 2010		1,384		1,384
Fall 2010	360	3,387	161	3,908
Spring 2011		3,375	153	3,528
Total	360	8,146	314	8,820

The School of Nursing was created Fall 2008.

Nursing was included in the College of Arts and Sciences prior to Fall 2008.

Note: The Board of Regents' new FTE definition is student-centered; therefore college FTE levels can not be calculated.

Source: Institutional Research and Planning

Student Credit Hour by Level (FY 2005 - 2011) Newnan Center

<i>Academic Years</i>	<i>Lower Level</i>	<i>Upper Level</i>	<i>Graduate Level</i>	<i>Total</i>
2004-2005				
Summer 2004	0	0	1,209	1,209
Fall 2004	852	0	998	1,850
Spring 2005	841	0	1,276	2,117
Total	1,693	0	3,483	5,176
2005-2006				
Summer 2005	87	90	1,254	1,431
Fall 2005	771	145	1,080	1,996
Spring 2006	693	232	1,068	1,993
Total	1,551	467	3,402	5,420
2006-2007				
Summer 2006	126	342	1,473	1,941
Fall 2006	768	358	906	2,032
Spring 2007	834	596	882	2,312
Total	1,728	1,296	3,261	6,285
2007-2008				
Summer 2007	132	462	987	1,581
Fall 2007	858	678	1,095	2,631
Spring 2008	863	716	1,293	2,872
Total	1,853	1,856	3,375	7,084
2008-2009				
Summer 2008	276	642	1,452	2,370
Fall 2008	1,038	1,227	1,719	3,984
Spring 2009	765	1,234	1,485	3,484
Total	2,079	3,103	4,656	9,838
2009-2010				
Summer 2009	477	793	849	2,119
Fall 2009	1,077	1,871	573	3,521
Spring 2010	880	1,431	672	2,983
Total	2,434	4,095	2,094	8,623
2010-2011				
Summer 2010	572	812	768	2,152
Fall 2010	1,090	1,894	582	3,566
Spring 2011	842	1,604	603	3,049
Total	2,504	4,310	1,953	8,767

Note: The Board of Regents' new FTE definition is student-centered; therefore college FTE levels can not be calculated

Source: Institutional Research and Planning

Student Credit Hour by Level (FY 2005 - 2011) Dalton Center

<i>Academic Years</i>	<i>Upper Level</i>	<i>Graduate Level</i>	<i>Total</i>
2004-2005			
Summer 2004	217	186	403
Fall 2004	1,600	201	1,801
Spring 2005	1,489	186	1,675
Total	3,306	573	3,879
2005-2006			
Summer 2005	0	108	108
Fall 2005	202	84	286
Spring 2006	227	36	263
Total	429	228	657
2006-2007			
Summer 2006	0	0	0
Fall 2006	142	0	142
Spring 2007	231	0	231
Total	373	0	373
2007-2008			
Summer 2007	0	0	0
Fall 2007	150	0	150
Spring 2008	208	0	208
Total	358	0	358
2008-2009			
Summer 2008	0	0	0
Fall 2008	116	0	116
Spring 2009	237	0	237
Total	353	0	353
2009-2010			
Summer 2009	0	0	0
Fall 2009	200	0	200
Spring 2010	352	0	352
Total	552	0	552
2010-2011			
Summer 2010	0	0	0
Fall 2010	244	0	244
Spring 2011	250	0	250
Total	494	0	494

Note: The Board of Regents' new FTE definition is student-centered; therefore college FTE levels can not be calculated

Source: Institutional Research and Planning

Distance and Distributed Education Center

www.westga.edu/~distance/

Distributed Education is the term used to describe alternative learning environments whereby faculty draw on appropriate technology to provide instruction outside of the traditional classroom. The distributed model can be used in combination with traditional classroom-based courses or it can be used to create distance education courses, in which most learning occurs independent of time and/or place. In the University System of Georgia, if more than 50 percent of instruction in a course is delivered via distance technologies, it is classified as a Distance Education course.

Through its Distance and Distributed Education Center, the University offers credit classes to students at times and locations outside of the traditional classroom. The University of West Georgia was one of the first institutions in the University System of Georgia to offer full or partial online credit courses. The courses utilize the internet to deliver materials, assignments, facilitate discussion, and other appropriate interactions. Distance or Distributed credit courses are delivered fully or partially online through two-way live videoconferencing or through a combination of technologies.

A primary function of the Distance and Distributed Education Center is to provide support services and training for faculty and students participating in these courses. The Center also provides opportunities for collaboration and research for those who manage and administer Distance and Distributed Education programs throughout the nation through its online academic journal, its online non-credit certificate program, and its annual conference. For more information about Distance or Distributed Education, visit the Honors House, telephone 678-839-6248, or visit the University website.

Source: UWG Undergraduate Catalog 2010-2011

Unduplicated Headcount and Total Credit Hours Enrolled in Online Courses by Method of Delivery Fall 2006-2010

Online Course Delivery Mode	Fall 2006		Fall 2007		Fall 2008		Fall 2009		Fall 2010	
	Unduplicated Head Count	Credit Hours	Unduplicated Head Count	Credit Hours	Unduplicated Head Count	Credit Hours	Unduplicated Head Count	Credit Hours	Unduplicated Head Count	Credit Hours
G - eCore	536	2,201	512	2,114	488	2,184	585	2,899	750	3,503
D - 51-94% Distance	1,118	3,794	2,106	6,551	2,008	7,103	1,732	6,091	1,939	6,841
N - 95% or more Distance	484	1,262	623	1,764	2,051	6,365	2,532	8,452	2,706	9,754
Total	1,953	7,257	2,928	10,429	4,073	15,652	4,189	17,442	4,611	20,098

Note: e-Core means electronic core curriculum courses which enable the University System of Georgia students to complete the first two years of their college courses entirely online, except for occasional proctored exams.

G - designates e-Core courses.

D - designates courses in which 51-94% of the delivery mode is online.

N - designates courses in which 95% or more of the delivery mode is online.

Source: Institutional Research and Planning

Continuing Education

<https://uwgagenda.westga.edu/>

The Department of Continuing Education and Public Services has emerged as the extension of the traditional on-campus learning process. Non-credit classes are developed and offered to citizens of the University community at convenient locations and with flexible schedules to accommodate a wide variety of participants.

The mission of Continuing Education is to identify and provide non-credit educational opportunities that will enhance the quality of life for local citizens and provide training support to business and industry that will serve as a catalyst for economic development.

The CEU is defined as ten contact hours of participation in a qualified continuing education program. The CEU is recognized as the national standard for measuring an individual's participation in a non-credit program. Programs that qualify for CEU credit are referred to as Category I. Category I activities are designed to enhance occupational skills, and individual permanent records as transcripts are maintained. Courses that are designed primarily for personal enrichment and are social, cultural, or recreational in nature are referred to as Category II courses. No permanent individual records or transcripts are maintained for Category II courses.

Continuing Education Programs Fiscal Years 2010 - 2011

<i>Fiscal Year</i>	<i>Programs</i>	<i>Participants</i>	<i>CEUs</i>
2002	654	15,450	13,046
2003	635	16,048	13,606
2004	488	15,573	8,262
2005	332	4,403	6,478
2006	226	2,589	2,617
2007	266	2,909	2,945
2008	260	2,261	2,689
2009	250	2,816	2,594
2010	242	2,255	2,742

Note: Numbers include categories I and II

Source: Continuing Education

Off-Campus Programs

The Board of Regents approved and established a West Georgia satellite campus in Newnan, Georgia in August 1988. The Center currently offers degree and non-degree programs.

Approved by the Board of Regents in August, 2002, as a cooperative effort between Georgia Highlands College and the University of West Georgia, the External Degree Program services students in the Floyd County area who wish to continue formal education beyond the associate degree.

Off Campus Profile Fall 2010

Off Campus Sites	# of Courses	# of Students (Unduplicated)	Credit Hours		
			Undergraduate	Graduate	Total
Atlanta Area	1	22	0	51	51
Dalton Resident Center	2	31	244	0	244
Middle Georgia	3	44	66	88	154
Newnan Resident Center	49	514	2,984	582	3,566
North Georgia	19	121	1,065	84	1,149

Note: Chart does not include distance courses (N) taught 95 percent or more online.
Source: *Off-Campus Course Report*

Retention and Graduation Rates of Fall First-Time Full-Time Freshman Students

		Entered Fall 2001	Entered Fall 2002	Entered Fall 2003	Entered Fall 2004	Entered Fall 2005	Entered Fall 2006	Entered Fall 2007	Entered Fall 2008	Entered Fall 2009*
First Year	N=	1557	1625	1728	1701	1653	1700	1793	2007	1909
Second Year	Fall	1131	1127	1240	1203	1163	1238	1345	1471	1397
		72.64%	69.35%	71.76%	70.72%	70.36%	72.82%	75.01%	73.29%	73.18%
Third Year	Fall	829	813	920	879	921	917	1022	1126	
		53.24%	50.03%	53.24%	51.68%	55.72%	53.94%	57.00%	56.10%	
Fourth Year	Fall	721	691	811	751	809	808	932		
		46.31%	42.52%	46.93%	44.15%	48.94%	47.53%	51.98%		
Fifth Year	Fall	519	471	544	524	563	489			
		33.33%	28.98%	31.48%	30.81%	34.06%	28.76%			
Sixth Year	Fall	204	192	225	228	235				
		13.10%	11.82%	13.02%	13.40%	14.22%				
Graduation	N=	184	177	208	198	207	248			
Rate	4 yr	11.82%	10.89%	12.04%	11.64%	12.52%	14.59%			
	N=	469	417	507	474	492				
	5 yr	30.12%	25.66%	29.34%	27.87%	29.76%				
	N=	565	513	627	587					
	6 yr	36.29%	31.57%	36.28%	34.51%					

Note: Each entering class includes all entering freshmen enrolled full time whose first term is the fall indicated or the previous summer.

*Entering cohorts (beginning Fall 1996) were revised to eliminate all pre-freshmen students.

Source: *Department of Institutional Research and Planning*

Student Financial Aid

Fiscal Years 2007 - 2010

The Office of Financial Aid coordinates financial assistance for nearly seventy-two percent of West Georgia's students. Office staff determines eligibility for aid awarded by the University and record aid received by students from other sources, such as the University of West Georgia Foundation,

corporations, and individuals. The Office coordinates all student financial aid awards and reports all aid awarded to students attending the University to the Board of Regents, federal government, and University officials.

<i>Undergraduate</i>	<i>2006-2007</i>		<i>2007-2008</i>		<i>2008-2009</i>		<i>2009-2010</i>	
	No. of Awards*	Amount	No. of Awards*	Amount	No. of Awards*	Amount	No. of Awards*	Amount
Loans								
Perkins	257	261,666	304	311,502	318	316,000	295	308,500
Ford Direct Stafford	5,513	17,644,161	5,603	20,979,787	5,953	22,970,184	6,958	27,304,402
PLUS	442	2,060,829	530	2,193,387	474	2,473,549	557	3,028,893
UWG Emergency	756	326,992	720	316,759	79	414,881	0	0
Private	418	2,399,467	624	2,714,131	355	2,239,272	212	1,072,487
**HOPE Promise	218	601,650	226	578,250	189	499,500	3	1,130
**Service Cancelable	66	228,797	68	229,225	0	170,437	0	0
<i>Total</i>	<i>7,670</i>	<i>23,523,562</i>	<i>8,075</i>	<i>27,323,041</i>	<i>7,368</i>	<i>29,083,823</i>	<i>8,025</i>	<i>31,715,412</i>
Scholarships								
Institutional	548	1,284,289	446	1,262,576	596	1,665,207	459	1,701,123
Private	352	559,293	375	629,861	373	554,823	396	763,469
State	27	25,650	66	42,501	20	20,100	22	21,986
<i>Total</i>	<i>927</i>	<i>1,869,232</i>	<i>887</i>	<i>1,934,938</i>	<i>989</i>	<i>2,240,130</i>	<i>877</i>	<i>2,486,578</i>
Grants								
Hope	3,715	10,999,142	3,394	10,545,100	3,519	12,275,313	3,616	14,025,524
Pell	2,577	6,498,192	3,121	8,347,564	3,712	10,177,438	4,338	17,814,972
SEOG	214	156,442	202	170,605	297	212,070	288	187,500
Vocational Rehabilitation	150	309,658	139	314,483	155	602,614	0	0
LEAP	32	27,487	31	28,947	31	28,529	63	35,217
***ACG	145	100,550	304	212,850	529	398,340	979	726,538
***SMART	37	122,051	35	102,275	40	106,984	73	228,922
<i>Total</i>	<i>6,870</i>	<i>18,213,522</i>	<i>7,226</i>	<i>19,721,824</i>	<i>8,283</i>	<i>23,801,288</i>	<i>9,357</i>	<i>33,018,673</i>
Federal Programs								
College Work Study	254	289,141	276	315,445	285	333,423	234	378,629
Americorps	2	5,628	4	8,275	7	16,497	6	10,692
<i>Total</i>	<i>256</i>	<i>294,769</i>	<i>280</i>	<i>323,720</i>	<i>292</i>	<i>349,920</i>	<i>240</i>	<i>389,321</i>
Grand Total	15,696	43,901,085	16,402	49,303,523	16,932	55,475,161	18,499	67,609,984

* Number of awards may represent duplicated headcount because some students received more than one type of financial aid.

** HOPE Promise and Service Cancelable were included in Stafford Loan amounts in previous years.

*** ACG and SMART grants are new programs that began Fall 2006.

Source: Office of Financial Aid

Student Financial Aid Fiscal Years 2007 - 2010

<i>Graduate</i>	<i>2006-2007</i>		<i>2007-2008</i>		<i>2008-2009</i>		<i>2009-2010</i>	
	No. of Awards*	Amount	No. of Awards*	Amount	No. of Awards*	Amount	No. of Awards*	Amount
<i>Loans</i>								
Perkins	3	4,449	5	4,000	8	8,000	13	7,500
Ford Direct Stafford	840	5,387,694	915	6,532,554	1,297	9,002,517	1,163	9,474,343
GRAD PLUS (new)					2	8,803	4	21,598
**UWG Emergency					0	0	0	0
Private	23	150,389			18	119,891	8	50,800
HOPE Teacher	144	210,170	145	233,250	169	235,392	98	124,250
<i>Loans Total</i>	<i>1,010</i>	<i>5,752,702</i>	<i>1,065</i>	<i>6,769,804</i>	<i>1,494</i>	<i>9,374,603</i>	<i>1,286</i>	<i>9,678,491</i>
<i>Scholarships</i>								
Institutional			103	117,258	0	0	0	0
<i>Scholarships Total</i>	<i>0</i>	<i>0</i>	<i>103</i>	<i>117,258</i>	<i>0</i>	<i>0</i>	<i>0</i>	<i>0</i>
<i>Federal Programs</i>								
College Work Study	1	2,669	0	0	0	0	2	4,602
<i>Federal Total</i>	<i>1</i>	<i>2,669</i>	<i>0</i>	<i>0</i>	<i>0</i>	<i>0</i>	<i>2</i>	<i>4,602</i>
<i>Grand Total</i>	<i>1,011</i>	<i>5,755,371</i>	<i>1,168</i>	<i>6,887,062</i>	<i>1,494</i>	<i>9,374,603</i>	<i>1,288</i>	<i>9,683,093</i>

Number of Students Served

<i>Graduate</i>	<i>2006-2007</i>		<i>2007-2008</i>		<i>2008-2009</i>		<i>2009-2010</i>	
	No. of Served***	Amount	No. of Served***	Amount	No. of Served***	Amount	No. of Served***	Amount
<i>Loans</i>	<i>1,010</i>	<i>5,752,702</i>	<i>1,065</i>	<i>6,769,804</i>	<i>1,494</i>	<i>9,374,603</i>	<i>1,286</i>	<i>9,678,491</i>
<i>Hope Scholarships</i>	<i>3,715</i>		<i>3,394</i>		<i>3,519</i>		<i>0</i>	<i>0</i>
<i>Other Scholarships</i>	<i>900</i>		<i>821</i>		<i>969</i>		<i>877</i>	
<i>Federal Work Study</i>	<i>1</i>	<i>2,669</i>	<i>0</i>	<i>0</i>	<i>0</i>	<i>0</i>	<i>2</i>	<i>4,602</i>
<i>Grand Total</i>	<i>5,626</i>	<i>5,755,371</i>	<i>5,280</i>	<i>6,769,804</i>	<i>5,982</i>	<i>9,374,603</i>	<i>2,165</i>	<i>9,683,093</i>

UWG Student Financial Aid Fiscal Years 2001-2010

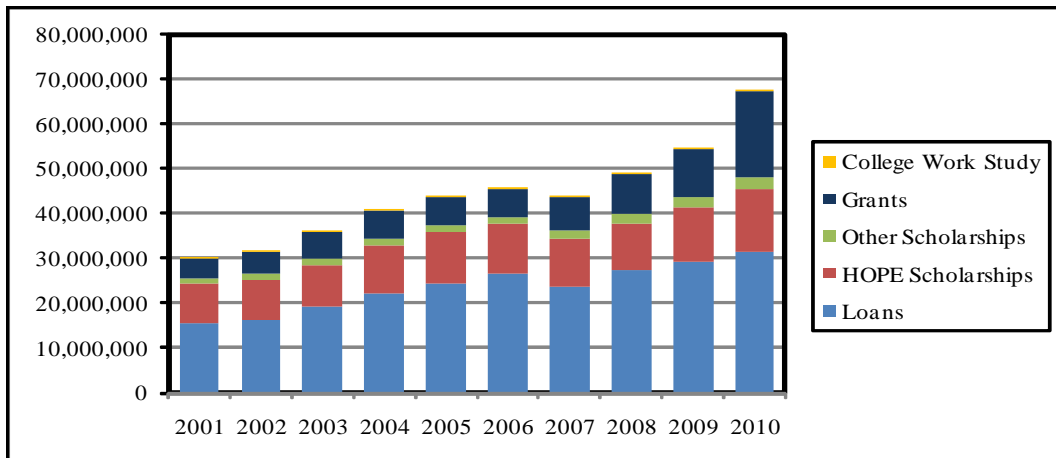
Fiscal Year	Loans	HOPE Scholarships	Other Scholarships	Grants	Work Study	Total
2001	15,598,453	8,643,111	1,412,396	4,243,202	380,661	30,277,823
2002	16,292,531	8,869,893	1,405,583	4,824,621	413,632	31,806,260
2003	19,097,179	9,501,835	1,498,035	5,670,785	367,045	36,134,879
2004	22,158,711	10,755,456	1,443,160	6,195,410	338,265	40,891,002
2005	24,438,516	11,368,110	1,617,131	6,184,011	357,340	43,965,108
2006	26,779,221	10,814,832	1,639,918	6,300,158	322,800	45,856,929
2007	23,523,562	10,999,142	1,869,232	7,214,380	294,769	43,901,085
2008	27,323,041	10,545,100	1,934,938	9,176,724	323,720	49,303,523
2009	29,083,823	12,275,313	2,240,130	10,923,361	349,920	54,457,666
2010	31,406,912	14,025,524	2,486,578	19,362,390	389,321	67,670,725

Number of Students Served*						
Fiscal Year	Loans	HOPE Scholarships	Other Scholarships	Grants	Work Study	Total
2001	4,883	4,033	910	1,949	395	12,170
2002	6,031	3,965	925	2,016	383	13,320
2003	6,880	3,968	881	2,222	330	14,281
2004	7,253	4,135	833	2,863	328	15,412
2005	6,851	4,618	876	2,443	314	15,102
2006	9,280	4,453	901	2,831	279	17,744
2007	7,670	3,715	927	3,155	256	15,696
2008	8,075	3,394	821	3,832	280	16,402
2009	7,368	3,519	969	4,764	292	16,912
2010	8,025	3,616	877	9,357	240	22,115

*Unduplicated headcount within categories of aid.

Shaded areas indicate reporting error by Financial Aid. Headcount was duplicated 2000 through 2002.

Student Financial Aid Growth



Source: Financial Aid

Degrees



Degrees and Majors Offered

Fall 2010

Bachelor of Arts

Anthropology
Art
Biology
Chemistry **
English **
Foreign Languages and Literatures
Geography
Global Studies
History **
International Economic Affairs
Mass Communications
Mathematics
Philosophy
Political Science
Psychology
Theatre

Bachelor of Business Administration

Accounting
Economics
Finance
Management
Management Information Systems
Marketing
Real Estate

Bachelor of Fine Arts

Art

Bachelor of Music

Composition
Music Education *
Music, Elective Studies in Business
Performance
Performance, Emphasis in Jazz Studies
Performance, Emphasis in Piano Pedagogy

Bachelor of Science

Biology **
Computer Science
Criminology
Earth Science **
Economics **
Environmental Science
Environmental Studies
Geography
Geology
Mathematics **
Physics **
Political Science
Sociology
Sport Management

Bachelor of Science in Chemistry

Bachelor of Science in Education

Business Education (6-12)
Early Childhood Education (P-5)
Middle Grades Education (4-8)
Physical Education (P-12)
Speech-Language Pathology (P-12)
Special Education (P-12)

Bachelor of Science in Nursing

Master of Arts

Criminology
English
History
Psychology
Sociology

Master of Arts in Teaching (collaborative)

Secondary Education and Teaching
Mathematics
Science

Master of Business Administration

Degrees and Majors Offered

Master of Education

Business Education
Early Childhood Education
Educational Leadership
French Language Teacher Education
Media
Middle Grades Education
Physical Education
Professional Counseling
Reading Education
Secondary Education
 English
 Mathematics
 Science
 Social Studies
Spanish Language Teacher Education
Special Education
 General Curriculum
 Adapted Curriculum
Speech-Language Pathology

Master of Music

Music Education
Performance

Master of Professional Accounting

Master of Public Administration

Master of Science

Applied Computer Science
Biology
Mathematics

Master of Science in Nursing

Master of Science in Rural and Small Town Planning

Specialist in Education

Business Education
Early Childhood Education
Economics (6-12)
Educational Leadership
Media
Middle Grades Education
Physical Education
Professional Counseling
Secondary Education
 English
 Mathematics
 Science
 Social Studies
Special Education

Doctor of Education

Professional Counseling and Supervision
School Improvement

Doctor of Psychology

Individual, Organizational, and Community Transformation

Post-Master's Certificate

Health Systems Leadership
Nursing Education

Non-Degree Initial Certification Programs in Education

Art (P-12)
Biology (6-12)
Broad Field Science (6-12)
Business Education (6-12)
Chemistry (6-12)
Early Childhood Education (P-5)
Earth/Space Science (6-12)
English (6-12)
French (P-12)
History (6-12)
Mathematics (6-12)
Media Specialist (P-12)
Middle Grades Education (4-8)
Music (P-12)
Physics (6-12)
Political Science (6-12)
School Counseling (P-12)
Spanish (P-12)

Non-Degree Add-On Certification Programs and Endorsements in Education

Educational Leadership
ESOL Endorsement
Media Specialist
Reading Endorsement
Reading Specialist

**Certification obtainable in grades P-12*

***Certification obtainable in grades 7-12*

Source: UWG Undergraduate Catalog 2010-2011

UWG Degrees Conferred Fiscal Years 2001–2010

<i>Fiscal Years</i>	2001	2002	2003	2004	2005	2006	2007	2008	2009	2010
Bachelor of Arts										
Anthropology	6	2	4	11	4	4	5	9	9	10
Art	1	3	-	2	1	2	2	4	4	2
Biology	2	2	-	-	-	-	-	-	-	-
Chemistry	3	6	6	11	9	9	11	11	7	8
Chemistry/Secondary Education			-	-	1	3	2	-	2	1
English	29	33	31	19	30	45	31	35	27	36
French	6	2	2	2	3	5	1	2	2	-
General Studies	1	-	-	-	-	-	-	-	-	-
Geography	1	1	2	1	1	-	-	3	1	2
German				1	-	-	-	1	4	3
Global Studies	-	-	1	1	-	2	1	2	1	-
History	17	16	16	19	17	28	32	33	38	34
International Economic Affairs	6	3	2	8	11	2	3	3	4	5
Mass Communication	28	28	29	37	38	49	40	47	40	48
Mathematics	1	-	-	-	-	1	1	-	-	-
Philosophy	4	5	4	1	5	5	4	4	8	14
Political Science	1	2	4	8	9	4	3	8	5	9
Psychology	65	72	86	78	73	64	88	75	92	82
Sociology	14	9	2	1	1	-	-	-	-	-
Spanish	6	6	3	-	6	6	6	12	6	7
Speech and Theatre Arts	6	5	1	2	-	-	-	-	-	-
Theatre				2	6	5	2	4	8	7
<i>Total</i>	<i>197</i>	<i>195</i>	<i>193</i>	<i>204</i>	<i>215</i>	<i>234</i>	<i>232</i>	<i>253</i>	<i>258</i>	<i>268</i>
Bachelor of Business Administration										
Accounting	26	26	36	45	35	46	40	38	58	68
Administrative Systems	5	-	-	-	-	-	-	-	-	-
Technology Support Systems	7	4	4	3	4	2	1	-	-	1
Business Information Systems	64	57	54	40	43	-	-	-	-	-
Economics	2	3	2	2	5	8	4	4	2	5
Finance	33	32	39	28	33	33	17	37	37	42
Management	77	72	76	87	86	103	104	88	120	118
Management Information Systems						31	24	16	14	25
Marketing	65	57	61	87	71	91	84	81	87	100
Real Estate	8	5	4	11	19	16	17	19	14	10
<i>Total</i>	<i>287</i>	<i>256</i>	<i>276</i>	<i>303</i>	<i>296</i>	<i>330</i>	<i>291</i>	<i>283</i>	<i>332</i>	<i>369</i>
Bachelor of Fine Arts	14	22	19	29	36	35	30	26	37	38
Bachelor of Science in Chemistry	8	7	8	4	4	10	11	15	13	12

Degrees for double majors are reported by first major only.

Corrections made to match the Board of Regents Degrees and Awards Conferred Report.

Degrees Conferred (continued)

<i>Fiscal Years</i>	<i>2001</i>	<i>2002</i>	<i>2003</i>	<i>2004</i>	<i>2005</i>	<i>2006</i>	<i>2007</i>	<i>2008</i>	<i>2009</i>	<i>2010</i>
Bachelor of Science in Education										
Business Education	5	3	4	8	3	6	7	5	3	7
Early Childhood Education	127	109	102	129	164	160	160	191	191	199
Middle Grades Education	30	27	17	19	25	29	21	19	37	17
Physical Education	20	17	13	27	27	19	14	5	21	26
Secondary Science Education	5	2	1	-	-	-	-	-	-	-
Secondary Social Science Education	8	12	4	2	3	-	-	-	-	-
Special Education	16	18	20	29	17	22	25	4	-	6
Speech Pathology	13	18	23	12	17	12	17	18	15	24
<i>Total</i>	<i>224</i>	<i>206</i>	<i>184</i>	<i>226</i>	<i>256</i>	<i>248</i>	<i>244</i>	<i>242</i>	<i>267</i>	<i>279</i>
Bachelor of Music										
Elective Studies in Business-Music		1	-	-	1	-	-	-	-	-
Music Education	4	2	3	5	4	6	6	5	8	9
Performance	3	2	2	4	2	3	1	1	3	5
Theory and Composition	-	1	-	1	-	-	-	-	-	-
<i>Total</i>	<i>7</i>	<i>6</i>	<i>5</i>	<i>10</i>	<i>7</i>	<i>9</i>	<i>7</i>	<i>6</i>	<i>11</i>	<i>14</i>
Bachelor of Science										
Biology	16	30	26	56	41	44	65	70	76	85
Biology/Secondary Education			-	1	-	2	4	-	1	5
Computer Science	8	18	15	8	14	7	7	11	5	12
Criminal Justice	25	23	18	-	-	-	-	-	-	-
Criminology	-	-	-	38	35	36	28	41	43	42
Earth Science-Secondary Education										1
Economics	6	5	4	12	7	14	7	16	11	17
Economics-Secondary Education				2	-	-	-	-	1	1
Environmental Science	-	2	-	3	1	1	3	1	-	-
Environmental Studies	-	-	2	-	2	3	3	1	2	4
Geography	1	1	3	3	1	2	2	7	3	1
Geology	8	11	8	2	5	8	5	11	8	7
Mathematics	5	5	7	9	16	7	15	12	13	13
Physics	2	5	7	5	2	4	3	7	6	4
Physics/Secondary Education			-	-	-	-	-	-	1	-
Political Science	18	13	13	23	27	34	26	31	29	26
Sociology	35	44	34	47	66	49	41	55	60	44
Sports Management										17
<i>Total</i>	<i>124</i>	<i>157</i>	<i>137</i>	<i>209</i>	<i>217</i>	<i>211</i>	<i>209</i>	<i>263</i>	<i>259</i>	<i>279</i>
Bachelor of Science in Earth Science	-	-	-	-	1	1	2	1	1	-
Bachelor Science in Nursing	67	58	53	51	65	66	69	107	104	130
Bachelor of Science in Recreation	12	24	23	34	39	39	33	25	49	18

Degrees for double majors are reported by first major only.

Corrections made to match the Board of Regents Degrees and Awards Conferred Report.

Degrees Conferred (continued)

<i>Fiscal Years</i>	<i>2001</i>	<i>2002</i>	<i>2003</i>	<i>2004</i>	<i>2005</i>	<i>2006</i>	<i>2007</i>	<i>2008</i>	<i>2009</i>	<i>2010</i>
Master of Arts										
Criminology										4
English	6	9	2	5	10	5	3	6	5	4
Gerontology	9	9	3	3	2	-	1	-	1	-
History	3	6	6	8	8	7	8	6	10	7
Psychology	21	24	24	30	28	25	16	25	14	11
Sociology	3	5	3	4	2	4	1	6	3	4
<i>Total</i>	<i>42</i>	<i>53</i>	<i>38</i>	<i>50</i>	<i>50</i>	<i>41</i>	<i>29</i>	<i>43</i>	<i>33</i>	<i>30</i>
Master of Business Administration	38	20	29	42	37	30	23	21	49	82
Master of Professional Accounting	5	10	7	6	5	3	6	4	10	18
Master of Education										
Administration and Supervision	48	54	67	35	84	43	24	10	24	9
Art Education	2	2	1	1	2	5	4	2	3	1
Business Education	13	16	17	18	31	27	28	26	14	17
Early Childhood Education	59	47	54	48	33	41	26	40	59	44
Educational Leadership										1
Foreign Languages Teacher Educ.								2	-	2
Guidance and Counseling	48	29	40	28	55	41	43	40	44	23
Media	25	24	29	41	59	48	39	39	40	53
Middle Grades Education	26	31	37	25	11	22	18	16	12	13
Physical Education	11	9	1	9	9	1	4	4	7	1
Professional Counseling										20
Reading Instruction	12	18	6	13	19	12	11	12	7	11
Secondary Education	23	34	22	18	16	14	17	11	13	11
Special Education	45	38	24	23	47	36	23	29	24	40
Speech Pathology	29	31	32	17	5	18	14	11	18	20
<i>Total</i>	<i>341</i>	<i>333</i>	<i>330</i>	<i>276</i>	<i>371</i>	<i>308</i>	<i>251</i>	<i>242</i>	<i>265</i>	<i>266</i>
Master of Music										
Music Education	2	1	2	2	-	3	1	2	3	2
Performance	-	2	3	-	3	-	-	-	-	2
<i>Total</i>	<i>2</i>	<i>3</i>	<i>5</i>	<i>2</i>	<i>3</i>	<i>3</i>	<i>1</i>	<i>2</i>	<i>3</i>	<i>4</i>
Master of Public Administration	4	9	8	12	10	5	8	12	10	9
Master of Science										
Applied Computer Science				1	4	9	7	6	2	9
Biology	9	5	5	9	4	7	3	6	4	10
<i>Total</i>	<i>9</i>	<i>5</i>	<i>5</i>	<i>10</i>	<i>8</i>	<i>16</i>	<i>10</i>	<i>12</i>	<i>6</i>	<i>19</i>
Master of Science in Rural and Small Town Planning	-	-	1	2	1	4	-	-	1	1

Degrees for double majors are reported by first major only.

Corrections made to match the Board of Regents Degrees and Awards Conferred Report.

Degrees Conferred (continued)

<i>Fiscal Years</i>	2001	2002	2003	2004	2005	2006	2007	2008	2009	2010
Master of Science in Nursing				10	5	5	11	10	11	9
Specialist in Education										
Administration and Supervision	12	19	19	55	46	36	48	46	37	16
Business Education	1	-	6	5	5	1	4	4	4	3
Early Childhood Education	15	41	10	10	3	6	7	12	20	16
Educational Leadership										53
Guidance and Counseling	21	11	10	12	9	13	9	12	14	12
Media	19	19	12	23	32	34	41	31	45	62
Middle Grades Education	18	20	9	13	6	7	4	6	8	10
Physical Education	5	2	7	1	2	-	2	-	4	-
Professional Counseling										3
Secondary Education	9	6	10	5	6	8	12	5	5	4
Special Education	18	17	13	15	14	17	11	17	20	58
<i>Total</i>	<i>118</i>	<i>135</i>	<i>96</i>	<i>139</i>	<i>123</i>	<i>122</i>	<i>138</i>	<i>133</i>	<i>157</i>	<i>237</i>
Post-Baccalaureate Certificate										
Geographic Information Systems										1
Museum Studies							1	5	7	8
Public History							-	3	2	-
Public Management							3	-	2	5
<i>Total</i>							<i>4</i>	<i>8</i>	<i>11</i>	<i>14</i>
Doctorate in Education (Ed.D.)				1	2	8	6	8	8	7
Total Number of Degrees by Level										
Bachelor	940	930	898	1,070	1,136	1,183	1,128	1,221	1,331	1,407
Post-Baccalaureate Certificate							4	8	11	14
Education Specialist	118	135	96	139	123	122	138	133	157	237
Master	441	433	423	410	490	415	339	346	388	438
Doctorate in Education				1	2	8	6	8	8	7
Total	1,499	1,498	1,417	1,620	1,751	1,728	1,615	1,716	1,895	2,103

Degrees for double majors are reported by first major only.

Corrections made to match the Board of Regents Degrees and Awards Conferred Report.

Source: Department of Institutional Research and Planning

Faculty



Faculty Profile Institutional Total Fall 2010

<i>Rank</i>	<i>Teaching Faculty</i>		<i>Administrators</i>		<i>Librarians</i>	<i>Total</i>	<i>Percent</i>
	<i>Full-time</i>	<i>Part-time</i>	<i>General¹</i>	<i>Academic²</i>			
Professor	65	10	1	32	2	110	19.0%
Associate Professor	87	2	2	8		99	17.2%
Assistant Professor	140	22			4	166	28.8%
Instructor	62	95			6	163	28.2%
Lecturer	39					39	6.8%
<i>College/Department</i>							
Richards College of Business	42	14	2	6		64	11.1%
College of Education	76	60	1	7		144	25.0%
College of Arts and Sciences	255	48		22		325	56.3%
Library				2	12	14	2.4%
School of Nursing	20	7		3		30	5.2%
<i>Highest Degree Earned</i>							
Doctorate	266	42	3	37		348	60.3%
Master's or EDS	127	83		3	12	225	39.0%
Professional Bachelor		4				4	0.7%
<i>Tenure Status</i>							
Tenure	151		2	39	2	194	33.6%
Not on Tenure Track	134	129	1	1	6	271	47.0%
Tenure - Track	108				4	112	19.4%
<i>Ethnicity</i>							
African American/Black	27	9		2		38	6.6%
American Indian or Alaskan	2					2	0.3%
Asian or Pacific Islander	31	1	1	1		34	5.9%
Hispanic	8	4				12	2.1%
Caucasian/White	325	115	2	37	12	491	85.1%
<i>Gender</i>							
Female	206	94	1	16	10	327	56.7%
Male	187	35	2	24	2	250	43.3%
<i>Total Faculty</i>	393	129	3	40	12	577	100%

¹General Administrators include the President, Vice President for Academic Affairs, and Associate Vice Presidents for Academic Affairs.

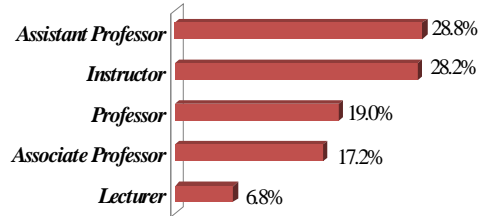
²Academic Administrators include Deans, Associate Deans, Department Chairs, and Academic Directors.

Note: Limited term faculty are included in the full-time faculty category.

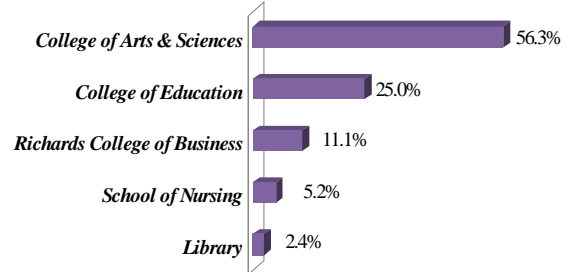
Source: Division of Academic Affairs

Composition of Faculty Fall 2010

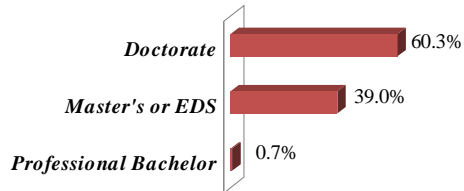
Rank



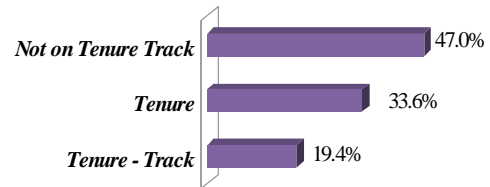
College/School



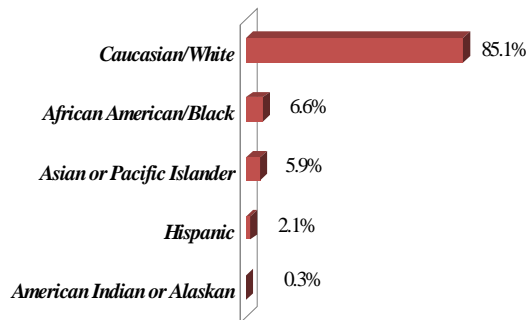
Highest Degree Earned



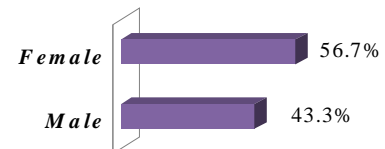
Tenure Status



Ethnicity



Gender



Faculty Profile

College of Arts and Sciences

Fall 2010

<i>Rank</i>	<i>Teaching Faculty</i>		<i>Administrators</i>		<i>Total</i>	<i>Percent</i>
	<i>Full-time</i>	<i>Part-time</i>	<i>General¹</i>	<i>Academic²</i>		
Professor	43	1		18	62	19.1%
Associate Professor	55			4	59	18.1%
Assistant Professor	87	1			88	27.1%
Instructor	46	46			92	28.3%
Lecturer	24				24	7.4%
<i>Highest Degree Earned</i>						
Doctorate	171	6		21	198	60.9%
Master's or EDS	84	41		1	126	38.8%
Professional Bachelor		1			1	0.3%
<i>Tenure Status</i>						
Tenure	98			22	120	36.9%
Not on Tenure Track	84	48			132	40.6%
Tenure - Track	73				73	22.5%
<i>Ethnicity</i>						
African American/Black	13	2		2	17	5.2%
American Indian or Alaskan	1				1	0.3%
Asian or Pacific Islander	21	1			22	6.8%
Hispanic	6	3			9	2.8%
Caucasian/White	214	42		20	276	84.9%
<i>Gender</i>						
Female	118	32		5	155	47.7%
Male	137	16		17	170	52.3%
<i>Total Faculty</i>	255	48	0	22	325	100%

¹General Administrators include the President, Vice President for Academic Affairs, and Associate Vice Presidents for Academic Affairs.

²Academic Administrators include Deans, Associate Deans, Department Chairs, and Academic Directors.

Note: Limited term faculty are included in the full-time faculty category.

Source: Division of Academic Affairs

Faculty Profile

Richards College of Business

Fall 2010

Rank	Teaching Faculty		Administrators		Total	Percent
	Full time	Part time	General¹	Academic²		
Professor	13	5	1	6	25	39.1%
Associate Professor	9		1		10	15.6%
Assistant Professor	8				8	12.5%
Instructor	4	9			13	20.3%
Lecturer	8				8	12.5%
Highest Degree Earned						
Doctorate	32	8	2	6	48	75.0%
Master's or EDS	10	6			16	25.0%
Professional Bachelor						0.0%
Tenure Status						
Tenure	19		1	5	25	39.1%
Not on Tenure Track	13	14	1	1	29	45.3%
Tenure - Track	10				10	15.6%
Ethnicity						
African American/Black	2	1			3	4.7%
American Indian or Alaskan						0.0%
Asian or Pacific Islander	6		1	1	8	12.5%
Hispanic	2	1			3	4.7%
Caucasian/White	32	12	1	5	50	78.1%
Gender						
Female	17	7		1	25	39.1%
Male	25	7	2	5	39	60.9%
Total Faculty	42	14	2	6	64	100%

¹General Administrators include the President, Vice President for Academic Affairs, and Associate Vice Presidents for Academic Affairs.

²Academic Administrators include Deans, Associate Deans, Department Chairs, and Academic Directors.

Note: Limited term faculty are included in the full-time faculty category.

Source: Division of Academic Affairs

Faculty Profile

College of Education

Fall 2010

Rank	Teaching Faculty		Administrators		Total	Percent
	Full time	Part time	General¹	Academic²		
Professor	8	3		4	15	10.4%
Associate Professor	22	1	1	3	27	18.8%
Assistant Professor	28	21			49	34.0%
Instructor	11	35			46	31.9%
Lecturer	7				7	4.9%
Highest Degree Earned						
Doctorate	58	27	1	7	93	64.6%
Master's or EDS	18	30			48	33.3%
Professional Bachelor		3			3	2.1%
Tenure Status						
Tenure	31	0	1	7	39	27.1%
Not on Tenure Track	23	60			83	57.6%
Tenure - Track	22	0			22	15.3%
Ethnicity						
African American/Black	10	6			16	11.1%
American Indian or Alaskan	1				1	0.7%
Asian or Pacific Islander	4				4	2.8%
Hispanic						0.0%
Caucasian/White	61	54	1	7	123	85.4%
Gender						
Female	51	48	1	6	106	73.6%
Male	25	12		1	38	26.4%
Total Faculty	76	60	1	7	144	100%

¹General Administrators include the President, Vice President for Academic Affairs, and Associate Vice Presidents for Academic Affairs.

²Academic Administrators include Deans, Associate Deans, Department Chairs, and Academic Directors.

Note: Limited term faculty are included in the full-time faculty category.

Source: Division of Academic Affairs

Faculty Profile

School of Nursing

Fall 2010

Rank	Teaching Faculty		Administrators		Total	Percent
	Full-time	Part-time	General¹	Academic²		
Professor	1	1		3	5	16.7%
Associate Professor	1	1			2	6.7%
Assistant Professor	17				17	56.6%
Instructor	1	5			6	20.0%
Lecturer						0.0%
Highest Degree Earned						
Doctorate	5	1		3	9	30.0%
Master's or EDS	15	6			21	70.0%
Professional Bachelor						0.0%
Tenure Status						
Tenure	3			3	6	14.3%
Not on Tenure Track	14	7			21	75.0%
Tenure - Track	3				3	10.7%
Ethnicity						
African American/Black	2				2	6.7%
American Indian or Alaskan						0.0%
Asian or Pacific Islander						0.0%
Hispanic						0.0%
Caucasian/White	18	7		3	28	93.3%
Gender						
Female	20	7		3	30	100.0%
Male						0.0%
Total Faculty	20	7		3	30	100%

¹General Administrators include the President, Vice President for Academic Affairs, and Associate Vice Presidents for Academic Affairs.

²Academic Administrators include Deans, Associate Deans, Department Chairs, and Academic Directors.

Note: Limited term faculty are included in the full-time faculty category.

Source: Division of Academic Affairs

Faculty Profile

Irvine S. Ingram Library

Fall 2010

Rank	Teaching Faculty		Administrators		Librarians	Total	Percent
	Full-time	Part-time	General ¹	Academic ²			
Professor				1	2	3	20.0%
Associate Professor				1	1	2	13.3%
Assistant Professor					4	4	26.7%
Instructor					6	6	40.0%
Lecturer							0.0%
Highest Degree Earned							
Doctorate							0.0%
Master's or EDS				2	13	15	100.0%
Professional Bachelor							0.0%
Tenure Status							
Tenure				2	3	5	33.3%
Not on Tenure Track					6	6	40.0%
Tenure - Track					4	4	26.7%
Ethnicity							
African American/Black							0.0%
American Indian or Alaskan							0.0%
Asian or Pacific Islander							0.0%
Hispanic							0.0%
Caucasian/White				2	13	15	100.0%
Gender							
Female				1	10	11	73.3%
Male				1	3	4	26.7%
Total Faculty				2	13	15	100%

¹General Administrators include the President, Vice President for Academic Affairs, and Associate Vice Presidents for Academic Affairs.

²Academic Administrators include Deans, Associate Deans, Department Chairs, and Academic Directors.

Note: Limited term faculty are included in the full-time faculty category.

Source: Division of Academic Affairs

Average Salary by Employee Category Fiscal Years 2004-2011

<i>Faculty</i>	<i>FY 2004</i>		<i>FY 2005</i>		<i>FY 2006</i>		<i>FY 2007</i>	
	<i>Number</i>	<i>Average</i>	<i>Number</i>	<i>Average</i>	<i>Number</i>	<i>Average</i>	<i>Number</i>	<i>Average</i>
Professor	50	69,712	53	70,558	56	72,937	60	73,374
Associate Professor	85	52,030	86	52,853	85	55,406	82	57,552
Assistant Professor	141	45,340	151	46,045	142	48,286	134	52,320
Instructor	57	34,320	54	33,878	61	35,477	78	35,452
Lecturer	12	48,347	18	45,618	20	43,496	24	44,758
All Faculty	345	\$49,950	362	\$49,790	364	\$51,120	378	\$52,691

<i>Staff</i>								
Administrative	258	47,069	283	42,794	303	44,231	331	48,861
Clerical	159	23,278	146	22,523	139	23,403	135	23,489
Maintenance	149	23,901	130	22,838	139	23,339	119	23,131
All Staff	566	\$31,416	559	\$29,385	581	\$30,324	585	\$31,827

<i>Faculty</i>	<i>FY 2008</i>		<i>FY 2009</i>		<i>FY 2010</i>		<i>FY 2011</i>	
	<i>Number</i>	<i>Average</i>	<i>Number</i>	<i>Average</i>	<i>Number</i>	<i>Average</i>	<i>Number</i>	<i>Average</i>
Professor	65	77,201	59	76,830	62	81,923	99	86,019
Associate Professor	82	58,814	86	59,871	94	60,656	98	63,389
Assistant Professor	148	51,659	145	52,511	157	51,791	144	51,961
Instructor	64	37,424	76	38,137	73	38,543	68	38,318
Lecturer	26	44,598	30	44,288	30	44,381	39	42,749
All Faculty	385	\$53,939	396	\$54,327	416	\$55,459	448	\$56,487

<i>Staff</i>								
Administrative	248	47,512	315	49,139	320	47,636	316	57,061
Clerical	190	26,254	187	26,633	187	26,994	173	28,460
Maintenance	154	26,215	149	26,795	155	27,865	125	26,958
All Staff	592	\$35,128	651	\$37,560	662	\$34,165	614	\$42,966

Note: Faculty totals include all full-time teaching faculty, librarians, and other (f-t) faculty with temporary appointment.

Sources: Division of Academic Affairs and Office of Human Resources

Sponsored Research



Sponsored Operations

<http://www.westga.edu/oso/index.php>

History

The University of West Georgia established a central office to administer sponsored operations in 1967. University reorganization in 1973 placed responsibility for sponsored operations, grants, contracts, budgeting of funds from sources external to the University, and institutional research in the office of Instructional and Research Services. By 1980, that unit became the Division of Budget and Research Services, reporting to the President of the University. In Fiscal Year 1996, Sponsored Operations was placed under the Vice-President for Academic Affairs.

Services Rendered

The Office of Sponsored Operations aids and supports faculty/staff efforts to attract funds from sources external to the University in support of instructional, research, and service programs. This is accomplished by the Director of Sponsored Operations, who: 1) matches faculty/staff interests and needs with appropriate funding sources, 2) routes requests for proposals (RFP's) to specific faculty/department/program personnel, 3) assists faculty/staff in preparing applications and proposals, 4) coordinates award paperwork, documentation, and reporting, and, 5) provides staff development through grants preparation/administration workshops and seminars. The Office of Sponsored Operations provides the day-to-day services necessary to support all program activities funded from sources external to West Georgia and provides support for the administration of the Faculty Research Grant program funded through the University.

The Director of Sponsored Operations recommends all external contracts, proposals, and grants, and monitors institutional performance under such agreements.

West Georgia attracts grants, gifts, and contracts from federal, state, and local government agencies, corporations, and foundations. This external funding and other revenue enable the University to fulfill its official mission to emphasize creative teaching, encourage research, and promote the development of human resources through educational programs.

Sponsored Operations Goals

The Sponsored Operations Office established the following strategic goals:

1. To promote and support the instructional, research, and public service missions of West Georgia.
2. To encourage University units and individual faculty/staff efforts in seeking funds from external agencies in support of instructional, research, and public service projects.
3. To monitor the Faculty Research Grant Program in compliance with established institutional policies and procedures.
4. To assist principal investigators in efforts to comply with federal and state statutes and University System policy.
5. To seek increased support for University activities from corporate and foundation sources.

Sponsored Operations Assessment As of June 30 of Each Fiscal Year

<i>Fiscal Year</i>	<i>Number of Proposals Submitted</i>	<i>Number of Proposals Funded</i>	<i>Amount Requested</i>	<i>Amount Awarded</i>
2003	62	43	\$8,207,448	\$1,932,727
2004	51	44	4,638,100	2,255,747
2005	66	47	4,649,668	2,056,983
2006	48	38	2,681,068	1,909,258
2007	74	60	4,144,252	2,396,349
2008	74	59	4,027,924	2,097,703
2009	75	46	7,411,645	2,494,825
2010	75	53	\$7,152,437	\$2,422,145

Note: Amounts exclude awards for student financial aid.
Source: Office of Sponsored Operations

Directors of Sponsored Projects

Fiscal Year 2010

as of June 30, 2010

College of Arts and Sciences

Dr. Thomas Foster – Anthropology

Bartow County – Georgia – FY 2010
Department of Transportation – State of Georgia
\$15,353

Dr. Thomas Foster – Anthropology

Edwards-Pitman Environmental, Inc.
\$1,000

Dr. Thomas Foster – Anthropology

T-Mobile Site Curation
Environmental Corporation of America
\$500

Dr. Thomas Foster – Anthropology

DNR Curation Agreement – FY 2010
Georgia Department of Natural Resources
\$21,320

Dr. Thomas Foster – Anthropology

“We the People”
National Endowment for the Humanities
\$6,000

Dr. Thomas Foster – Anthropology

Curation of Artifacts–Gordon County, Georgia
Georgia Department of Transportation
\$4,750

Dr. Thomas Foster – Anthropology

GDOT Projects STP-018-1(56) and BRF-018-1-(44)
Georgia Department of Transportation
\$60,000

Dr. Thomas Foster – Anthropology

GDOT Project BRST-0746(8)-Harris County
Georgia Department of Transportation
\$20,250

Dr. Thomas Foster – Anthropology

GDOT – CY 2008-2010 Archaeological Collections
Georgia Department of Transportation
\$75,000

Dr. Thomas Foster – Anthropology

Cobb County Archeology Lab (UWG-1093)
Cobb County Community Development Agency
\$20,500

Dr. Thomas Foster – Anthropology

MOU-GA Department of Transportation
Georgia Department of Transportation
\$2,500

Dr. Thomas Foster – Anthropology

GDOT Project BRST-1367(4) Floyd County
Georgia Department of Transportation
\$3,378

Dr. Thomas Foster – Anthropology

GDOT Project BRZLB-15(17) Bartow County
Georgia Department of Transportation
\$12,250

Dr. Thomas Foster – Anthropology

Bartow County – Georgia – Curatorial and Education
Georgia Department of Transportation
\$150,000

Dr. David Moran – Biology

McIntosh Reserve Native Plant Survey/Inventory
Friends of McIntosh
\$2,453

Dr. Gregory Payne – Biology

Monitoring of Heliothines in Cotton
Georgia Cotton Commission
\$22,000

Dr. Heidi Banford – Biology

Environmental Education
The University of Georgia – Sub-grant
\$58,322

Dr. Farooq Khan – Chemistry

Metal Ions in Mass Spectrometric Ionization
American Chemical Society Petroleum Research Fund
\$65,000

Dr. Sharmistha Basu-Dutt – Chemistry

Helping Teachers to Incorporate Nature of Science
The University of Georgia
\$36,613

Dr. Sharmistha Basu-Dutt – Chemistry

Communicating and Analysis of Student Experiences
The University of Georgia
\$33,767

College of Arts and Sciences (Continued)

Dr. Sharmistha Basu-Dutt – Chemistry

Dr. Gail Marshall – Curriculum and Instruction

Project Impact
UWG Foundation
\$25,000

Dr. Duane Yoder – Computer Science

Engaging the STEM Student In and Out of the Classroom
National Science Foundation /PRISM
\$10,500

Dr. Randall Kath – Geosciences

Water Quality – City of Villa Rica
City of Villa Rica
\$4,133

Dr. Curtis Hollabaugh – Geosciences

Snake Creek Watershed
Carroll County Water Authority
\$33,614

Dr. Hannes Gerhardt – Geosciences

Collaborative Research: Territorial Imaginaries
National Science Foundation
\$73,202

Dr. Randall Kath – Geosciences

Watershed Long-Term Monitoring Project
Carroll County Board of Commissioners
\$48,400

Dr. L. Shea Rose – Geosciences

Analysis of Vegetative Effects on Albedo
The Regents of the University of California
\$20,188

Dr. Jeong Chang Seong – Geosciences

GA View
AmericaView, Inc./U.S. Geological Survey
\$25,395

Dr. Jeong Chang Seong – Geosciences

Development of Geo-Spatial Applications with PG-Steamer
Pixoneer Geomatics, Inc.
\$12,170

Dr. Jeong Chang Seong and Dr. L. Shea Rose – Geosciences

Lidar Project
U.S. Department of Interior, U.S. Geological Survey
\$491,213

Dr. Tim Chowns – Geosciences

Teaching Earth Systems in High School
The University of Georgia
\$41,889

Dr. Tim Chowns – Geosciences

St. Catherines Island Field Grant
American Museum of Natural History
\$3,500

Dr. Ann McCleary – History

Center for Public History
UWG Foundation
\$35,720

Dr. Bruce Landman – Mathematics

Integers Conference 2009
National Science Foundation
\$17,900

Dr. Joy Black – Mathematics

Training for Technology Integration in Mathematics
The University of Georgia
\$25,631

Dr. Bobby Powell – Physics

MSP Program
Georgia Department of Education
\$90,000

Dr. Larry Schor – Psychology

Disaster Behavioral Health Web Site # 4
State of Georgia, Department of Human Resources
\$30,000

College of Education

Dr. Mark Parrish – Counseling/Educational Psychology
Prevent @ UWG
Substance Abuse and Mental Health Services
Administration – DHHS
\$92,594

Ms. Rachael Robinson – Curriculum and Instruction
Georgia’s Prekindergarten Program – FY 2010
Georgia Department of Early Care and Learning
\$211,774

Ms. Rachael Robinson – Curriculum and Instruction
Bright From the Start Stimulus Funding
Georgia Department of Early Care and Learning
\$4,200

Dr. Tamara Ogletree – Curriculum and Instruction
Cherokee Rose Writing Project
National Writing Project Corp./US Department of Education
\$46,000

Dr. Tamara Ogletree – Curriculum and Instruction
Cherokee Rose Writing Project Income
Carroll County Board of Education
\$2,865

Dr. Danilo Baylen – Media/Instructional Technology
Developing Middle & Secondary School Teachers
The University of Georgia
\$40,566

Dr. Roy Forbes – College of Education
Virtual School Study
Governor’s Office of Student Achievement
\$7,635

Dr. Mary Hooper – Educational Leadership
West GA Leadership Academy
Pike and Haralson County Schools
\$30,186

Dr. Kim Metcalf – Evaluation Center
Teaching Fellows – Carrollton City Schools FY 2009
Carrollton Board of Education
\$73,062

Dr. Kim Metcalf – Evaluation Center
Walmart COE
Walmart Foundation/UWG Foundation
\$35,000

Mr. Steve Rich – WGYSTC
WGYSTC – FY 2010
BOR of the University System of Georgia
\$80,000

Richards College of Business

Ms. Donna Robinson – Small Business Development Center
Small Business Development Center
University of Georgia/US Small Business Administration
\$182,250

Ms. Donna Robinson – Small Business Development Center
Small Business Development Center Funds
UWG Foundation
\$9,855

Administrative Units

Ms. Jill Hendricks – Health Services
GOHS and UWG Collaborative Safety Initiative
Governor’s Office of Highway Safety
\$12,500

¹ External sources authorized spending for fixed time periods. In certain cases, those periods included only a portion of Fiscal Year 2010.

² In a number of cases, only the portion of the total amount awarded was actually received or spent during Fiscal Year 2010.

Source: *Office of Sponsored Operations*

Faculty Research Grants

Fiscal Year 2010

In addition to resources acquired from external sources, the University budgets state-allocated funds to assist faculty research efforts through the Faculty Research Grant Program. Established in 1967, the Faculty Research Grant Program provides limited funding for approved faculty research projects.

Each fiscal year, faculty members submit formal proposals to the Learning Resources Committee of the Faculty Senate

requesting University support. Committee members evaluate proposals and make funding recommendations for full Senate review. The Faculty Senate approves proposals and suggests levels of funding to the President, who subsequently allocates funds to the grant recipients.

In compliance with these procedures, the President of the University awarded Faculty Research Grant funds for this Fiscal Year as follows:

College of Arts and Sciences

Dr. Thomas Foster – Anthropology/Waring Laboratory

Training for 3D Laser Scanner
\$500

Dr. Lisa Gezon – Anthropology

Economic and Identity Transformations in Coastal Costa Rica
\$1,390

Dr. Marjories Snipes – Anthropology

“Shaker Historical Research at Sabbathday Lake, Maine”
\$1,500

Mr. Joey Hannaford – Art

Research Residency at Hamilton Wood Type Museum, Two Rivers, Wisconsin
\$1,500

Mr. Perry Kirk – Art

Furthering research activity in preparation for application for promotion to full Professor
\$1,000

Ms. Casey McGuire – Art

Diving Through Surface Into Light: The Process of Entering the Artificial Window (Research on media in installation and the effects on the unconscious)
\$1,500

Dr. Rebecca Reynolds – Art

From Green Cube to Site: A Case Study of the Significance of Site-Specific Art at the Laumeier Sculpture Park
\$1,500

Dr. Heidi Banford – Biology

Comparative phylogeography of the Alabama hogsucker, *Hypentelium etowanum* and bandfin shiner *Luxilus zonistius*, (year 2)
\$1,500

Dr. William Kenyon – Biology

Diversity in RpoS-Controlled Phenotypes of Clinical and Environmental *Serratia marcescens* Strains
\$1,500

Dr. Leos Kral – Biology

Bacterial Community Structures as Indicators of Environmental Differentiation
\$1,500

Dr. David Morgan – Biology

The relationship between *Psilactis* and *Symphyotrichum*
\$1,016

Dr. Satyanarayana Swamy-Mruthinti – Biology

Curcumin Protects Neuronally Differentiated PC-12 Cells from CML- and AB-Induced Cytotoxicity
\$1,500

Dr. Sharmistha Basu-Dutt - Chemistry

Antioxidants to the Rescue of Carbon Nanotubes
\$1,000

Dr. Megumi Fujita – Chemistry

Cation AND Anion Binding Studies with New “Ambi-Receptor” Molecules
\$1,500

Dr. Anne Gaquere-Parker – Chemistry

Fullerols and fullerenes: an ongoing research project
\$1,500

Dr. Victoria J. Geisler – Chemistry

Synthesis of a Novel Antioxidant
\$1,500

Dr. John Hansen – Chemistry

Investigating the Stability of a Metalloprotein
\$1,500

Dr. Farooq Khan – Chemistry

Novel approaches to modify carbon nanotubes
\$1,500

Dr. Partha S. Ray – Chemistry

Studies towards the synthesis of a potential anti-tumor agent
\$1,500

Dr. Douglas Stuart – Chemistry

Vibrational Analysis and Identification of Salvinorin A and Salvia divinorum, a Psychoactive of Forensic Interest
\$1,490

Dr. Lynn Anderson – Foreign Languages

Le Chemin Poetique de Jacques Reda
\$900

Dr. Christopher Berg – Geosciences

Trace-element and accessory phase thermobarometry: Towards the construction of detailed pressure-temperature-time paths in the Southern Appalachians
\$1,500

Dr. Curtis Hollabaugh – Geosciences

Environmental Geochemistry of Well Water in West Georgia: Abundance of Natural and Man Induced Contaminants
\$1,000

Dr. James Mayer – Geosciences

Redox chemistry and arsenic occurrence in floodplain and associated riparian wetland groundwaters in a crystalline-rock setting
\$1,290

Dr. Keith Bohannon – History

Death Knell of the Confederacy: The Final Campaigns of the Army of Tennessee
\$1,257

Dr. Jonathan Goldstein – History

Lazar Epstein (1886-1979) as Bundist Activist in Europe, China, and the United States
\$1,500

Dr. Aran MacKinnon – History

“Zuluness” in and out of the South African homelands. Chief Mangosuthu Buthelezi, ethnic nationalism and the material base of Zulu identity in modern South African history
\$1,500

Dr. Amber Smallwood – Mass Communications and Theatre Arts

Locally Powered FM Radio?: A 6-year Follow-up on the Status of LDFM in U.S. Communities
\$645

Dr. Abdollah Khodkar – Mathematics

Super edge-graceful labeling for complete multipartite graphs
\$1,000

Dr. Fengrong Wei – Mathematics

Variable selection and Estimation in High-dimensional varying Coefficient Models with Longitudinal Data
\$800

Dr. Stanley Caress – Political Science and Planning

Impact of Recent Reforms on Legislative Performance
\$635

Dr. Sooho Lee – Political Science and Planning

Revisiting the Pasteur’s Quadrant: How much does “use” inspire scientists in conducting their research?
\$1,500

Dr. John Carter – Psychology

A Re-exploration of Positive Interpersonal Emotions (Continuation)
\$740

School of Nursing

Dr. Laurie Ware – School of Nursing

1. Use of Web 2.0 Among Nursing Faculty and Students
2. Health 2.0 in the Healthcare Community

\$200

Sponsored Operations Faculty Research Enhancement Awards Fiscal Year 2011

During Fiscal Year 1995, President Beheruz N. Sethna created Sponsored Operations Faculty Research Enhancement Awards to reinvest a portion of indirect cost recovery funds, strengthening the University of West Georgia's research infrastructure.

The Sponsored Operations Faculty Research Enhancement Awards for Fiscal Year 2010 are as follows:

<i>Award</i>	<i>Name/Department</i>	<i>Project Title</i>
\$2,500	Dr. Mautusi Mitra Biology	The study of irradiance acclimation and photosynthesis in the green microalga <i>Chlamydomonas reinhardtii</i> , using molecular biological tools
\$1,500	Dr. S. Swamy-Mruthinti Biology	Structure-function relationship of lens AQP0
\$1,451	Dr. Megumi Fujita Chemistry	Synthesis of New Indolocarbazole Derivatives as Ligands for Dinuclear Metallic Complexes
\$3,000	Dr. Anne Gaquere Chemistry	Ultrasound-promoted synthesis of fullerene-based dyads
\$2,500	Dr. Victoria Geisler Chemistry	Synthesis of Precursor to a Novel Antioxidant
\$2,500	Dr. Farooq Khan Chemistry	Selective binding of metal ions to antibiotics valinomycin and beauvericin: A mass spectrometric study using electrospray ionization
\$1,500	Dr. Emily Hipchen English and Philosophy	Funding for Travel to Mayaguez, Puerto Rico in Support of Research in Life Writing
\$2,510	Dr. Jeanette Diaz-Laplante Psychology	Pwogwan Sante Mantal: Developing a community mental health program in rural Haiti
\$1,500	Dr. Pamela Hunt Sociology and Criminology	An Affect Control Theory Analysis of Same-Sex Parents

Note: Awarded in 2010 for spending in Fiscal Year 2011

Source: Office of the Sponsored Operations

Financial Information



Budgeting and Assessment Cycle

The University of West Georgia operates under three major budgets: the Resident Instruction Budget, the Auxiliary Enterprises Budget, and the Student Activities Budget. Each serves a distinct purpose.

The Resident Instruction Budget is funded from state appropriations, student tuition and fees, and dedicated funds received from sources external to the University System of Georgia. Resident Instruction Funds support instruction, research, libraries, the computer center and laboratories, Student Services, the administrative and service offices of West Georgia, a portion of the maintenance of the physical plant, and academic scholarships and fellowships.

The Auxiliary Enterprises Budget is self-supporting and is operated on a profit/loss basis. Auxiliary Enterprises generate revenue from residence hall rentals, meal ticket sales, bookstore sales, vending machine sales, student health and athletic fees, parking fees, and parking fines. Auxiliary Enterprises funds support the operation of the residence halls, dining rooms, the University Bookstore, network support, vending machines, bus service, health services, traffic operations, intercollegiate athletics (as of FY 93) and, they provide funds necessary to maintain a portion of the University's physical plant.

The Student Activities Budget is funded by student activities fees. Student Activities funds support various activities including choral and instrumental organizations, art exhibits, debate team, jazz ensemble, Student Activities Council, University game room, Student Government, University publications such as the *West Georgian* and *Eclectic*, and intramural athletics.

In addition to the three budgets, the West Georgia Foundation, Inc., a non-profit corporation dedicated to the advancement of West Georgia, provides funding for scholarships, equipment, and services not funded by state appropriations. The Alumni Association section of the Fact Book supplies additional information about the West Georgia Foundation.

*By State law the period of fiscal operation is the Fiscal Year, beginning July 1 of any year and ending June 30 of the following year.

Reporting

The format for the *Fact Book* shows information as provided in the *University of West Georgia Financial Report*. It accurately reflects the financial position of the University.

All revenue sources and expenses for all fund groups (Resident Instruction, Auxiliary, Student Activities, Sponsored, Continuing Education, Indirect Revenue, and Technology Fees) are combined with as much detail as previously provided. Totals for the fiscal year ending June 30, 2008 have been audited. Totals for the year ending June 30, 2009 are actual revenue and expense amounts and are still subject to changes following the State audit. Totals for the current year are original budgeted totals. Total expenditures do not include capitalized amounts such as equipment over \$5,000 and library collections.

Source: Office of Budget Services

University Revenue by Source

	<i>July 1, 2010 Budgeted</i>	<i>June 30, 2010 Actual</i>	<i>June 30, 2009 Actual</i>
Operating Revenue			
Tuition and Fees	\$ 55,232,178	\$ 54,587,604	\$ 44,400,645
Less: Scholarship allowances	\$ -	\$ (14,732,554)	\$ (9,196,819)
Grants and Contracts			
Federal	\$ -	\$ 775,997	\$ 1,011,746
State	\$ -	\$ 433,535	\$ 548,038
Other	\$ -	\$ 1,035,649	\$ 1,319,163
Sales and Services	\$ 1,460,000	\$ 416,216	\$ 313,538
Rents and Royalties		\$ 29,109	\$ 25,099
Auxiliary			
Residence Halls	\$ 12,060,558	\$ 11,097,134	\$ 9,694,658
Bookstore	\$ 4,404,481	\$ 4,236,004	\$ 4,363,190
Food Services	\$ 7,201,426	\$ 6,642,481	\$ 6,069,614
Parking/Transportation	\$ 1,710,763	\$ 1,639,450	\$ 1,546,100
Health Services	\$ 2,211,204	\$ 2,043,975	\$ 1,890,979
Intercollegiate Athletics	\$ 5,380,400	\$ 4,677,408	\$ 3,154,240
Other Organizations	\$ 848,115	\$ 455,094	\$ 1,711,351
Other	\$ 50,000	\$ 2,957,601	\$ 1,248,986
Total Operating Revenue	<u>\$ 90,559,125</u>	<u>\$ 76,294,703</u>	<u>\$ 68,100,528</u>
Non-Operating Revenue			
State Appropriations	\$ 45,717,560	\$ 38,474,634	\$ 46,454,033
Federal Stimulus - Stabilization Fund	\$ 647,326	\$ 7,826,638	\$ 480,039
Grants and Contracts	\$ 16,028,271	\$ 18,862,951	\$ 11,192,165
Gifts	\$ -	\$ 294,460	\$ 545,868
Investment Income	\$ 21,337	\$ 246,080	\$ 507,899
Other	\$ -	\$ (24,681)	\$ 28,450
Total Nonoperating Revenue	<u>\$ 62,414,494</u>	<u>\$ 65,680,082</u>	<u>\$ 59,208,454</u>
Capital Gifts and Grants			
State		\$ 3,085,277	\$ 31,816,569
Other Capital Gifts and Grants	\$ 1,495,820	\$ 2,200,000	\$ 6,837,250
Total Capital Gifts and Grants	<u>\$ 1,495,820</u>	<u>\$ 5,285,277</u>	<u>\$ 38,653,819</u>
Total Revenues	<u>\$ 154,469,439</u>	<u>\$ 147,260,062</u>	<u>\$ 165,962,801</u>

- Includes all funding sources, internal revenue, special initiative, departmental sales and service, and sponsored
- Grants and contracts does not include federal tuition scholarships.

Source: Office of Budget Services

University Operating Expenses

	<i>July 1, 2010</i>	<i>June 30, 2010</i>
Operating Expenses	<i>Budgeted</i>	<i>Actual</i>
Salaries:		
Faculty	\$ 32,023,314	\$ 29,899,269
Staff	28,174,185	29,544,472
Benefits	16,424,460	17,374,138
Other Personal Services	2,878,186	917,560
Travel	1,791,573	876,692
Scholarships and Fellowships	14,943,908	9,510,771
Utilities	1,866,090	3,615,156
Supplies and Other Services	36,947,776	29,032,883
Depreciation	12,155,668	9,672,843
Total Operating Expenses	147,205,160	130,443,784
Non-Operating Expenses		
Interest Expense (Capital Assets)	-	5,058,222
Total Expenses	\$ 147,205,160	\$ 135,502,006
EXPENSES BY CLASSIFICATION		
	<i>July 1, 2010</i>	<i>June 30, 2010</i>
Operating Expenses	<i>Budgeted</i>	<i>Actual</i>
Instruction	\$ 47,691,942	\$ 47,692,451
College of Arts & Sciences	21,445,932	22,538,905
Richards College of Business	6,897,994	6,577,244
College of Education	9,237,724	8,443,708
School of Nursing	2,296,778	2,477,906
Other Instruction	7,813,514	7,654,688
Research	607,086	1,223,968
Public Service	331,603	473,009
Academic Support	16,912,827	15,447,430
Student Services (Excl Fund 13000)	6,536,931	6,188,491
Student Activities (Fund 13000)	3,491,937	2,535,411
Intramural	140,000	151,520
Social & Entertainment Activities	877,783	640,762
Student Government	40,000	29,109
Student Publications	69,900	71,530
Other Programs/Unassigned ¹	2,364,254	1,642,490
Institutional Support	17,306,928	11,682,785
Plant Operations and Maintenance	9,092,611	10,431,139
Safety and Security	1,496,555	-
Scholarships and Fellowships	14,943,908	8,282,751
Auxiliary Enterprises	28,792,832	26,486,349
Student Housing	9,394,557	9,555,165
Food Services	5,587,165	5,794,501
Stores and Shops	3,911,110	3,921,983
Intercollegiate Athletics	5,169,395	4,128,235
Other Service Units	4,730,605	3,086,465
Unallocated Expenses		
Total Operating Expenses	147,205,160	130,443,784
Non-Operating Expenses		
Interest Expense (Capital Assets)	-	5,058,222
Total Expenses	\$ 147,205,160	\$ 135,502,006

- Actual amounts for FY10 and FY09 do not include capitalized expenditures, but do include depreciation, Budget amount for FY10 does not include depreciation, minor capital projects, MRR, or GSFIC.

- Includes all fund groups: resident instruction, auxiliary, student activities, continuing education, indirect revenue, and technology fees.

June 30, 2009

Operating Expenses		<i>Actual</i>
Salaries:		
Faculty	\$	27,671,677
Staff		31,292,101
Benefits		16,653,079
Other Personal Services		333,424
Travel		853,988
Scholarships and Fellowships		6,641,504
Utilities		3,685,238
Supplies and Other Services		26,004,404
Depreciation		8,528,722
Total Operating Expenses		121,664,137
Non-Operating Expenses		
Interest Expense (Capital Assets)		3,094,036
Total Expenses	\$	124,758,173

EXPENSES BY CLASSIFICATION

June 30, 2009

Operating Expenses		<i>Actual</i>
Instruction	\$	45,636,252
College of Arts & Sciences	22,575,010	
Richards College of Business	6,055,325	
College of Education	7,866,084	
School of Nursing	2,426,740	
Other Instruction	6,713,093	
Research		893,052
Public Service		208,509
Academic Support		15,025,634
Student Services (Excl Fund 13000)		5,258,196
Student Activities (Fund 13000)		3,111,351
Intramural	114,531	
Social & Entertainment Activities	579,864	
Student Government	30,431	
Student Publications	73,363	
Other Programs/Unassigned ¹	2,313,162	
Institutional Support		11,697,737
Plant Operations and Maintenance		9,496,723
Safety and Security		-
Scholarships and Fellowships		5,422,428
Auxiliary Enterprises		24,914,255
Student Housing	9,202,614	
Food Services	5,504,950	
Stores and Shops	3,918,551	
Intercollegiate Athletics	3,119,199	
Other Service Units	3,168,941	
Unallocated Expenses		
Total Operating Expenses		121,664,137
Non-Operating Expenses		
Interest Expense (Capital Assets)		3,094,036
Total Expenses	\$	124,758,173

- Actual amounts for FY10 and FY09 do not include capitalized expenditures, but do include depreciation, Budget amount for FY10 does not include depreciation, minor capital projects, MRR, or GSFIC.
- Includes all fund groups: resident instruction, auxiliary, student activities, continuing education, indirect revenue, and technology fees.

Total Resident Instruction Expenditures Per Full-time Equivalent Student Fiscal Years 2007 – 2011*

<i>Fiscal Year</i>	<i>Resident Instruction Expenditures*</i>	<i>Fall Term FTE Enrollment**</i>	<i>Total Expenditures per FTE Student</i>
2007	\$84,862,070	8,942	\$9,491
2008	\$83,297,659	9,462	\$8,804
2009	\$96,732,567	9,989	\$9,684
2010	\$105,860,842	10,309	\$10,269
2011	\$114,920,391	10,213	\$11,253

*Calculated as total Operating Expenses per annual Financial Report less Auxiliary Services and Student Activities.

**FTE for all years represents the current definition set by the Board of Regents (Total full-time undergraduate students taking 12 or more hours + total full-time graduate students taking 9 or more hours) + (total part-time undergraduate credit hours/12 + total part-time graduate credit hours/9)

Distribution of the Student Dollar Fall 2010



1 Tuition	0.70
2 Health, Athletic, and Transportation Fees	0.12
3 Special Institutional Fees	0.07
4 Campus Center Fees	0.04
5 Student Activities Fee	0.03
6 Athletic Complex Fee	0.02
7 Technology Fee	0.02

Source: Office of Budget Services

Condensed Statement of Net Assets

Fiscal Years 2009 – 2010

	<i>FY2010</i>	<i>FY2009</i>
Assets:		
Current Assets	\$ 45,219,847	\$ 34,851,548
Capital Assets, net	210,198,861	164,874,137
Other Assets	2,404,998	2,183,046
Total Assets	257,823,706	201,908,731
Liabilities:		
Current Liabilities	18,067,394	18,648,407
Noncurrent Liabilities	111,436,873	66,698,941
Total Liabilities	129,504,267	85,347,348
Net Assets:		
Invested in Capital Assets, net of debt	99,187,844	98,762,720
Restricted - nonexpendable	-	-
Restricted - expendable	2,456,678	2,430,805
Capital Projects	-	-
Unrestricted	26,674,917	15,367,858
Total Net Assets	\$ 128,319,439	\$ 116,561,383

Assets are cash, investments, receivables, prepaid items, inventories, capital equipment, etc.
Liabilities are accounts payable, deposits from others to the University (i.e. deposits for room rentals, breakage, etc.), and payroll deductions.

West Georgia Foundation, Development and Alumni Relations



University of West Georgia Foundation

The University of West Georgia Foundation, Inc. (Foundation) is a Georgia charitable corporation. It receives and manages private contributions (gifts) made for the benefit of the University of West Georgia. The Foundation has been recognized as an organization exempt from Federal Income Tax under section 501(c)(3) of the Internal Revenue Code, and gifts to the Foundation are deductible as provided for in section 170 of the Internal Revenue Code. The Foundation encourages both restricted (specific purpose) and unrestricted (general use) gifts from donors.

The Foundation's Board of Trustees is composed of business, professional, and community leaders plus officers elected by the Board. The Board establishes and provides oversight of the Foundation's operating financial policies and procedures. In addition, the Foundation is committed to provide for the integrity of original corpus (principal) dollars plus assure that all fiduciary commitments made to the Foundation's donors are honored for the life of their agreements. The officers and trustees of the Foundation are committed to a policy of full-disclosure.

The Board of Regents of the University System has recognized that gifts and income from endowments that provide for the private support of system institutions are not taken into account when determining the allocation of state funds to the institution. The Board of Regents recognizes that all of its institutions are dependent, in part, on private funding and encourages all of its institutions to seek the support of alumni, friends, corporations, and other private organizations.

Source: Office of Development and Alumni Relations

Foundation Officers and Trustees

2011 Foundation Officers

Mrs. Susan O. Fleck, Chairman
Mr. Howard B. (Rocky) Lipham, III '90, Vice Chairman
Mr. J. Thomas (Tommy) Vance, Secretary
Vacant, Executive Director/Treasurer

2010 Trustees

Mr. A. Paul Cadenhead* '44
Mrs. Mary M. Covington '93
Mrs. Cindy Denney '86, '93, '95
Mr. Scott Evans
Dr. Lucille Garmon
Mr. Herb Garrett '68, '71
Mr. James A. Gill*
Mr. Murray D. Gray '55
Mr. Wyche T. (Tee) Green
Mrs. Edith (Edie) F. Haney '89
Mr. Robert G. Harris '86
Mrs. Deirdre Haywood-Rouse
Mr. Cary Ichter '81
Mr. David "Bo" Jackson
Mr. Phillip Kauffman*
Mr. Robert (Bob) E. Lovvorn '53
Mrs. Michelle Morgan '86 '87
Mr. James (Jim) M. Naughton
Mr. Trent North '91
Dr. Ward B. Pafford* (former University President)
Mr. David Parkman '58, '69
Mr. Randall Redding
Mr. K. Alexander (Alex) Roush
Dr. Beheruz N. Sethna (President)
Dr. Greg Slappey
Mr. Floyd W. Smith
Mr. Robert J. (Bob) Stone*
Mr. Tom Upchurch '61
Mr. Timothy I. Warren
Mr. Robert E. White '68
Mrs. Dana J. Wynn '74

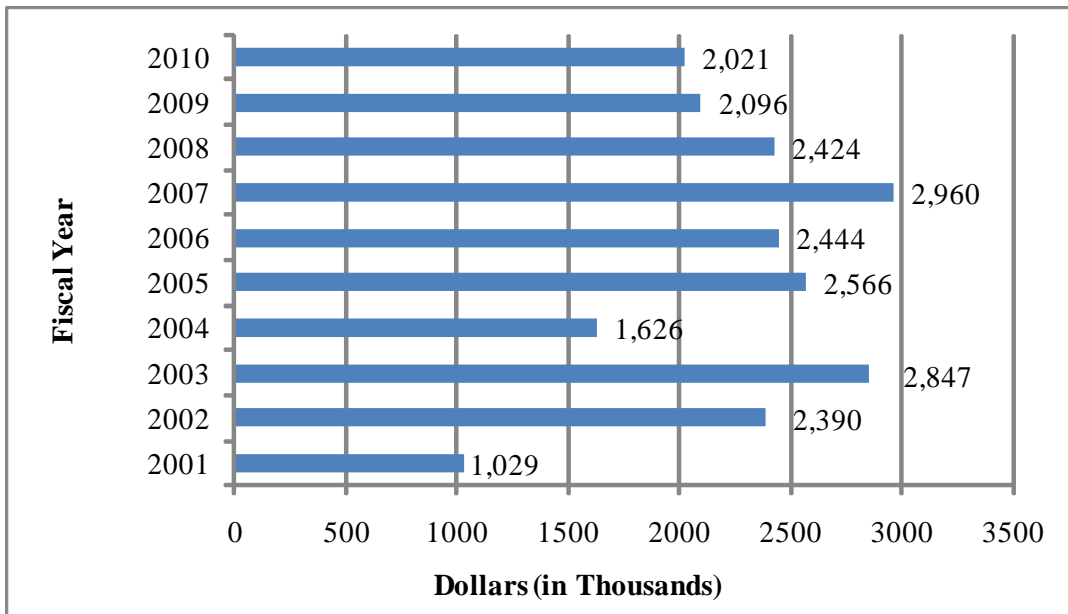
2011 Trustees

Mr. George W. Brooks, Jr. '84
Mr. A. Paul Cadenhead* '44
Mrs. Mary M. Covington '93
Mrs. Cindy Denney '86, '93, '95
Dr. Lucille Garmon
Mr. Herb Garrett '68, '71
Mr. James A. Gill*
Mrs. Edith (Edie) F. Haney '89
Mr. Robert G. Harris '86
Mrs. Deirdre Haywood-Rouse
Mr. David "Bo" Jackson
Mr. Phillip Kauffman*
Mr. R. David Knight '73
Mr. Robert (Bob) E. Lovvorn '53
Mrs. Michelle Morgan '86 '87
Mr. Trent North '91
Mr. David Parkman '58, '69
Mr. Randall Redding
Mr. K. Alexander (Alex) Roush
Dr. Michael Ruffner
Dr. Beheruz N. Sethna (President)
Mr. Floyd W. Smith
Mr. Robert J. (Bob) Stone*
Mr. Tom Upchurch '61
Mr. Timothy I. Warren
Mr. Robert E. White '68
Mrs. Dana J. Wynn '74

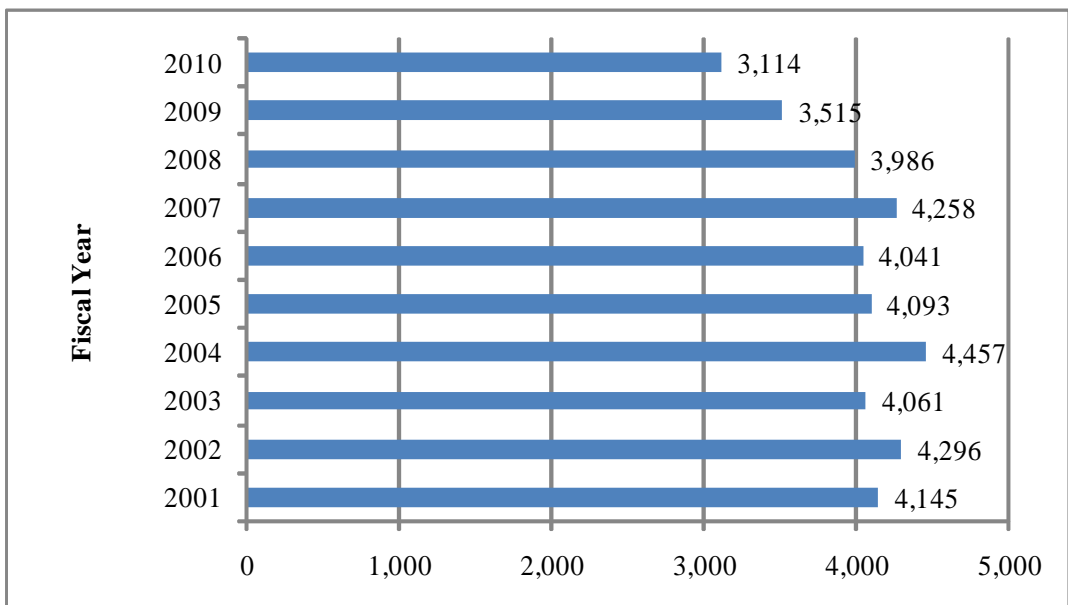
*Lifetime Member

Source: *Office of Development and Alumni Relations*

Annual Fund Dollars Raised



Number of Annual Fund Donors



Source: West Georgia Foundation, Inc.

Scholarships

General Scholarships

A&M Scholarship
Steve Andre Rotary Scholarship
Mack C. Baird Scholarship
Bowdon Sertoma Scholarship
Emory F. & Rosa W. Boyd Scholarship
James E. Boyd Scholarship
L. Wayne Brown Academic Scholarship
Jewell Miles Burson Memorial Scholarship
Business & Professional Women's Scholarship
Elizabeth Plunkett Buttimer Scholarship
Chief Charles "Barry" Carroll Memorial Scholarship
Carrollton Ear, Nose, & Throat Scholarship
Carrollton Elementary School Scholarship
Carrollton Junior Women's Scholarship
Carrollton Lions Club Scholarship
Carrollton Parent Teacher Organization Scholarship
George W. Carver High School Descendants Scholarship
Amos & Leona Caswell Scholarship
Betty Reynolds Cobb Scholarship
Brenda Busbin Collins Scholarship
Lerlie & Millard Copeland Scholarship
Davenport-Cadenhead Scholarship Fund
Felton Denney Scholarship
Jacob McGavock Dickinson Scholarship
Benny Drum Memorial Scholarship
MacGregor Flanders Scholarship
Georgian Bank Scholarship Endowment Fund
Chris Gillespie Memorial Scholarship
Golden Braves Scholarship Endowment Fund
Julia Barnes Harlin Memorial Scholarship
Hubert & Naomi Holland Endowment Scholarship
I.S. Ingram Scholarship
Ingram Scholarship Fund of the Forties
Irvine Sullivan & Martha Munro Ingram Scholarship
Collus O. & Eugenia Johnson Scholarship
Col. Frank Jones Kiwanis Scholarship
Kappa Sigma Lambda-Delta Alumni Chapter Endowment
Terry C. Kapetanacos Memorial Scholarship
King Packaging Scholarship
Ladies Over 36 Scholarship
Mary Ann Leathers Memorial Scholarship
Thomas R. Luck, Jr. Scholarship
C. Henry Lumpkin Memorial Scholarship
Dr. John Martin Memorial Scholarship
Leon Massey Presidential Scholarship
McCalman Scholarship
Phil McDowell Scholarship Endowment Fund
L.S. Mollette Memorial Scholarship
Morgan Oil Scholarship
Sue Myers Emergency Scholarship
OFS Bright Wave Scholarship Fund

General Scholarships (continued)

Jennifer Lynn Olson Memorial Scholarship
Elizabeth L. Parker Memorial Scholarship
Merlin O. Powers Memorial Scholarship
Chuck Puckett Family Endowment Scholarship
Roy Richards, Sr. Memorial Scholarship
Rotary Club of Carrollton Scholarship
Sylvia Shortt Scholarship for International Students
Robert P. Steed Scholarship
Suzanne Lankford Sullivan Scholarship
Alonzo & Clarence Thomas Memorial Scholarship
Henry Sims Varn Scholarship
Joe M. Ward Memorial Scholarship
West Georgia Life Underwriters Scholarship
William J. Wiggins Memorial Scholarship
Sherman & Betty Wilson Memorial Scholarship
Wasdin Scholarship
Wirsing Kiwanis Scholarship Fund
Worthy Family Memorial

College of Arts and Sciences

General Arts and Sciences

H.O. Lovvorn Scholarship
Sally Pafford Memorial Scholarship
Shirley Caffee Boykin Scholarship
Brooks O. Pittman Science Scholarship
Fred D. & Gail Brooks White Scholarship

Department of Anthropology

Carole E. Hill Anthropology Award
Thelma B. Larson Award
Antonio J. Waring, Jr. Scholarship
Antonio J. Waring, Jr. Distinguished Professorship
John Walton Whatley Scholarship

Scholarships

College of Arts and Sciences (continued)

Department of Art

Betty Andre Memorial Scholarship
Art Endowment
Art Scholarship Endowment
Art Study Award
Bayeux Scholarship Endowment
Cooper Bell Memorial Scholarship
Marianne Bobick Memorial Scholarship
Dorothy & C.J. Colevins Art Award
Gloria Covert Memorial Art Scholarship
David Dugan, Jr. Memorial Art Scholarship
Joyce Entrekkin Harris Scholarship
James & Marie Hingerton Scholarship
P.J. Younglove Hovey Live Art Scholarship
Mittie Brooks Johnson Memorial Scholarship
Bessie Curran Kepp Scholarship
Grace Richards Endowment Scholarship
Roush Family Scholarship
Helen Hunt Whatley Scholarship

Department of Biology

Bowdon Area Hospital
Dr. Roy L. Denney Scholarship Fund
Arthur & Shirley Gardner Scholarship
Dr. Thomas A. Hart Scholarship Fund
Morgan M. Hutson Scholarship Fund
Ryan Kauffman Presidential Scholarship Endowment
Lampton Biological Lecture Series
Lois Martin Scholarship Fund
Dr. Jim Mathis Biology Scholarship
Molecular Photosynthesis Research Award
T.R. Cotton Williamson Memorial Scholarship

Department of Chemistry

Latha Barnes Chemistry Award
Chemistry Department Scholarship
William Lockhart Scholarship
Jack L. Grogan Scholarship
Pope-Grogan Chemistry Award
James A. Wash Scholarship Fund

Department of Computer Science

Computer Science Scholarship
Harvey Olin Jordan Scholarship

Department of English and Philosophy

Mary Anne (Sugar) Wilson Goreau DeVillier Memorial Scholarship
Dr. Corliss Hines Edwards, Jr. Memorial Scholarship
Marion L. Fisher Endowed Memorial Scholarship
Kay Magenheimer Award
Mathews English Fund
Dr. James W. Mathews Distinguished Endowed English Scholarship for Graduate Studies
Parkman Family Endowment
Willie Maude Thompson Award
George Walker English Fund
Burdett & Shirley Wantland Philosophy Scholarship

Department of Foreign Languages and Literatures

Charles Beard Study Abroad Award
Marianne Bobick Memorial Scholarship
Jewell Miles Burson Language Award
Pierrette Frickey Award
Sobhi Ghobrial Memorial Scholarship Endowment
Cecilia Lee Scholarship
Dr. Nigel E. Smith Award

Department of Geosciences

John G. Chambers Scholarship
Geology Scholarships
Rodney K. Morrison Memorial Scholarship

Department of History

Robert Ray & Bula Adams Claxton Endowment Scholarship
W. Cope Goodwin Memorial Scholarship
J. David Griffin Teaching Award
Kennedy History Graduate Award of Excellence
NSDAR American History Award
Elizabeth Parker History Award
Vachel Davis Whatley, Sr. Scholarship

Department of Mass Communications and Theatre Arts

Dora Byron Memorial Scholarship
Margaret Gauthier Mass Comm Scholarship
Rhubarb Jones Scholarship
Ossie McCord McLarty Scholarship
David S. Parkman, III Scholarship
Frances Parkman Memorial Scholarship
George Fields Whatley Scholarship
William Boling, III Scholarship
Encore Theatre Company Scholarship
Friends of Theatre New Talent Award
Mildred Fokes Godard Theatre Arts
David Carter Neale Scholarship
P.J. Younglove Hovey Live Art Scholarship

Scholarships

College of Arts and Sciences (continued)

Department of Mathematics

Jewell Miles Burson Calculus Award
Capt. David Cooley Memorial Scholarship
Marion Crider Endowed Chair
Marion Crider Math Department Fund
Marion Crider Scholarship
Dr. Georgia Martin Scholarship
Dr. Chatty Pittman Memorial Scholarship
Vachel Davis Whatley, Jr. Scholarship

Department of Music

Shirley Caffee Boykin Music Scholarship
Annice Whatley Cameron Music Scholarship
Carrollton Presbyterian Church Choir Award
Kelly Drake Memorial Music Scholarship
Vachel V. & Betty Combs Driver Memorial Scholarship
Faculty Music Award
Friends & Patrons of Music Scholarship
P.J. Younglove Hovey Live Art Scholarship
DeVonner J. Ingram Music Scholarship
Kawai American Piano Scholarship
Lit-Mu Award
Lit-Mu Opera
Miriam C. Merrell Scholarship
Mary Lou Munn Award
Mary Lou Munn Memorial Scholarship
Music Miscellaneous
Steve Zachariah Smith Music Scholarship
Sony Music Scholarship
Charles Wadsworth Scholarship
Elizabeth Gellerstedt Wright Memorial Scholarship

Department of Physics

John Phillip Kittel Memorial Scholarship
Physics & Engineering Club Scholarship
R.K. Redding Construction Scholarship

Department of Political Science and Planning

George T. Bagby Scholarship
Janet Clark Endowment
Dudley Crosson Scholarship
T. Trevor Head Memorial Award
Political Science Department Endowment
Jud Whatley Scholarship

Department of Psychology

Mike Arons Humanistic Psychology Scholarship
Cleo Margaret Hackney Memorial
Humanistic Psychology Scholarship Award
Ann O. Wilson Endowment

Department of Sociology and Criminology

Tony Jackson Garrett Scholarship
Berta Fields Whatley Scholarship

Richards College of Business

General Business

Major General John A. Beall Scholarship Fund
D.W. Brooks/Gold Kist of West Georgia Scholarship
Henry M. Cameron Scholarship Fund
Charles W. Cox Memorial Scholarship
Rufus M. Dixon Scholarship
Friends of Fred Scholarship - Fred Hutchins Scholarship
Endowment
James B. Lipham Scholarship
McCalman Executive Roundtable
Dr. Faye McIntyre Honorary Scholarship
Earline J. Powers Business Education Scholarship
Henri Sims & Kennard Seforth Varn Scholarship
Richards College of Business Fund
Richards College of Business Visionary Endowment
Hugh W. Richards Memorial Scholarship
Sewell Chair Endowment
Robert J. Stone Endowment for Entrepreneurial Studies
Murray M. Webb Scholarship
Yeager Family Scholarship

Department of Accounting and Finance

Jimmy Couch Memorial
Eugene O. Poindexter Endowment Fund
Garrett, Stephens, & Thomas Scholarship
Naomi Satterfield Scholarship
Donna & Wayne Tervo Accounting Scholarship
Jack E. Threadgill, Sr. Memorial Scholarship Fund

Department of Economics

Economics Department Scholarship
Homer A. Hunt Scholarship
W. Glenn Moore Memorial Scholarship
Dr. Michael Raper Memorial Scholarship
Suzanne Lankford Sullivan Memorial Scholarship

Department of Management

Henry M. Cameron Scholarship Fund
Dr. Frank R. Hunsicker Memorial Award

Department of Marketing and Real Estate

Gibson/Overton/Peete Memorial Scholarship Fund
Evelyn Taylor Greer Memorial Scholarship Fund

Scholarships

College of Education

General Education

CHREA 20th Century Scholarship
CHREA 21st Century Scholarship
Lewis L. & Floy Burson Combs Memorial Scholarship
William Conner Scholarship
Bill Cummings Scholarship Fund
Dr. Dano M. Faires Endowed Memorial Scholarship
Dag Folger Memorial Scholarship
Debbie Forrester Memorial Scholarship
Edna Becker Hallum Scholarship
Johnnie & Edna Huey Scholarship
Sadie M. Hughes Scholarship
Leona Ingram Scholarship
Ruth Musick Jackson Scholarship
Wilda Seagraves Jackson Award
Effie McGuire Endowment Scholarship
Hugh McTeer Memorial Scholarship
Pearl Nix Scholarship
Pilot Club of Carrollton Scholarship
Dr. Thomas W. Sills Scholarship
Wilma Kidd Thornton Memorial Scholarship

Collaborative Support and Intervention

Carrollton Civitan Scholarship
Moselle T. Chappell Memorial Fund
George Colyer Scholarship
Herbert S. & Pauline T. Hatton Scholarship
Louis Herzog Scholarship - Carroll County ARC Scholarship
Dr. John J. & Ann K. Pershing Memorial Scholarship
Miss Michele & Dr. Nancy Pollard Scholarship

Early Learning and Childhood Education

Connie Wright Gunter Scholarship in Early Childhood Education
Judy Kerr Memorial Scholarship

Educational Innovation

Priscilla Bennett Family Scholarship
The Annie Belle Weaver Memorial Scholarship

College of Education (continued)

Leadership and Applied Instruction

Edwin M. Blue Scholarship
Mary White Davidson Scholarship
David Davis Memorial Scholarship Endowment Fund
Linton Deck Leadership Scholarship Fund
Dr. Gus Douvanis Memorial Scholarship
David Dugan Scholarship
Bernice Freeman Memorial Scholarship
Dr. Prentice L. Gott Family Scholarship
Fred F. Hallum Family Scholarship Endowment
Joe H. McGiboney Scholarship
Dot McNabb Scholarship
Dr. Robert Reeves Scholarship
Peggy Steelmon Scholarship
Thomas S. Upchurch for Educational Excellence
Annice Whatley Award for Excellence

School of Nursing

Raymond L. Abernathy Graduate Nursing Scholarship
Ayers/Hudson Memorial Nursing Scholarship
Donna Ayers Memorial Nursing Scholarship
Dr. Jeanette C. Bernhardt Merit Scholarship Endowment
Pansy Tisinger Brown Memorial Nursing Scholarship
Carroll-Haralson Medical Alliance Scholarship
DeVillier Family Trust Fund
Jonathan & Larry Grams Memorial Scholarship
Betty Griffith Memorial Scholarship
Ila Mae Gunnell Memorial Scholarship
Dr. Claudette Hayes Scholarship
Carl C. & Judith F. Horvath Memorial Scholarship
Jean Aycock McCauley Scholarship
Nursing Department Scholarship
Ernest M. Sewell Scholarship
Arta Mae Whatley Scholarship
Lettie Pate Whitehead Foundation Scholarship
Peter Woodhouse Ware Graduate Nursing Scholarship

Scholarships

Other West Georgia Scholarships

Alumni Association Endowment
Rev. John Caylor Baptist Student Union
Chi Phi Scholarship Fund
E. Woodfin Cole Presidential Fund
George & Bertha Echols Scholarship
Bobby Evans Baptist Student Union Scholarship
Goizuetta Scholarship Endowment
Hogan Excellence Fund
Eloise Merrell Loan Fund
National Excellence Fund
President's Discretionary Fund
West Georgia Foundation Scholarship
WG Excellence Fund
Frances Wood Wilson Foundation Scholarship

Athletics Scholarships

Stephen C. Anthony Citizenship Athletics Scholarship
Lee Booth Scholarship
W. Brown Basketball Scholarship
W. Brown Football Scholarship
Tonia Rutledge Cheatwood Softball Scholarship
M. Dan Gray Scholarship
H. Olin Jordan Memorial Scholarship Fund
C. Henry Lumpkin Baseball Scholarship
Lynde Nix Memorial Scholarship

Career Services

Student Research Assistance Program

Center for Public History

Joseph R. Johnson Scholarship

Center for Student Involvement

Leadershape Scholarship

Debate

Ovid Davis Scholarship
Chester Gibson Scholarship
Tisinger Debate Tournament

Facilities and Grounds

"Little John" Smith Landscape Scholarship

Graduate School

William Conner Scholarship
Ted & Maryon Hirsch Scholarship
Leona Ingram Scholarship
Annie Belle Weaver Memorial Scholarship

Honor's College

Advanced Academy of Georgia Scholarship in Honor of Dr. Julian Stanley
Bank of North Georgia Presidential Scholarship
BB&T Presidential Scholarship
Coca-Cola Presidential Scholarship
Ovid Davis Scholarship
Elizabeth C. Boyd Presidential Scholarship
James E. Boyd Presidential Scholarship
Mrs. Jewell Miles Burson Presidential Scholarship
Carroll EMC Presidential Scholarship
Chester Gibson Scholarship
Richard H. Glanton Presidential Endowment
Pat Hughes Memorial Scholarship
Christine Kauffman Hanson Presidential Scholarship
J. Albert & Martha H. Jones Presidential Scholarship
Jason Kauffman Presidential Scholarship
Scott Kauffman Presidential Scholarship
Mary Ryan Miles Scholarship
Presidential Scholarship
Russell & Mary Sarner Presidential Scholarship
Julian Stanley Academy Presidential Scholarship
Yong D. Suh Scholarship
Systems & Methods Presidential Scholarship
Tisinger Debate Tournament
Watson-Brown Foundation Scholarship

Ingram Library

Charles E. Beard Ingram Library Endowment Fund
Sarah Rigg Library Endowment

International Programs

Sylvia Shortt Scholarship for International Students

Newnan Center

Larry Grams Memorial Nursing Scholarship - Newnan
Newnan Campus Scholarship
Newnan Kiwanis Scholarship
Emily Thomasson Sealy Memorial Scholarship

Student Development

William Perry & Berna Teal Burson Memorial Endowment
Render Lee Whatley Scholarship

University of West Georgia National Alumni Association

<http://www.westga.edu/alumni/>

The alumni of the University of West Georgia constitute its largest single constituency and represent its most valuable resource for the University. Membership in the Alumni Association is open to all graduates of the State University of West Georgia, West Georgia College, or the Fourth District Agricultural and Mechanical School. A 36-member Board of Directors, along with several lifetime members, direct activities of the Association. The Association informs alumni of institutional plans, progress, opportunities, and needs.

Perspective, the alumni publication, is mailed to all alumni and friends three times a year. The spring issue includes the Honor Roll of Giving and is presented in a magazine format.

Major activities sponsored by the Alumni Association include Homecoming, Dinner with 12 strangers, as well as numerous reunions and special events that involve hundreds of alumni each year.

2010 - 2011 Executive Committee

President - Bonnie Stephens Wolf '71, Atlanta

Vice President - Rob T. Dial '06, Woodstock

Treasurer - Greg Benda '05, Smyrna

Secretary - Joy Burson Butler '66, Carrollton

Source: Office of Development Alumni Relations

Number of Georgia Resident Alumni as of December 2010

County	Total	County	Total	County	Total	County	Total
Appling	7	Crisp	11	Jeff Davis	3	Rabun	46
Atkinson	2	Dade	59	Jefferson	7	Randolph	8
Bacon	10	Dawson	47	Jenkins	2	Richmond	82
Baker	0	Decatur	23	Johnson	3	Rockdale	351
Baldwin	26	Dekalb	2,048	Jones	38	Schley	3
Banks	30	Dodge	9	Lamar	134	Screven	5
Barrow	157	Dooley	2	Lanier	2	Seminole	4
Bartow	823	Dougherty	70	Laurens	33	Spalding	480
Ben Hill	9	Douglas	2,355	Lee	40	Stephens	33
Berrien	5	Early	7	Liberty	21	Stewart	2
Bibb	175	Effingham	26	Lincoln	3	Sumter	32
Bleckley	6	Elbert	31	Long	2	Talbot	18
Brantley	3	Emanuel	11	Lowndes	56	Taliaferro	0
Brooks	15	Evans	5	Lumpkin	56	Tattnall	5
Bryan	19	Fannin	118	Macon	10	Taylor	5
Bulloch	29	Fayette	1,719	Madison	36	Telfair	2
Burke	7	Floyd	1,295	Marion	7	Terrell	3
Butts	106	Forsyth	662	McDuffie	16	Thomas	29
Calhoun	1	Franklin	35	McIntosh	21	Tift	39
Camden	28	Fulton	2,745	Meriwether	197	Toombs	24
Candler	7	Gilmer	139	Miller	6	Towns	38
Carroll	6,910	Glacock	1	Mitchell	6	Treutlen	4
Catoosa	506	Glynn	134	Monroe	63	Troup	716
Charlton	3	Gordon	522	Montgomery	5	Turner	5
Chatham	156	Grady	9	Morgan	83	Twiggs	2
Chattahoochee	0	Greene	57	Murray	375	Union	55
Chattooga	211	Gwinnett	2,260	Muscogee	225	Upson	159
Cherokee	1,106	Habersham	88	Newton	334	Walker	454
Clarke	183	Hall	445	Oconee	118	Walton	299
Clay	3	Hancock	7	Oglethorpe	19	Ware	24
Clayton	779	Haralson	1,197	Paulding	1,537	Warren	5
Clinch	1	Harris	109	Peach	11	Washington	11
Cobb	3,922	Hart	50	Pickens	167	Wayne	15
Coffee	16	Heard	281	Pierce	10	White	66
Colquitt	14	Henry	1,036	Pike	194	Whitfield	1,014
Columbia	87	Houston	148	Polk	857	Wilcox	1
Cook	5	Irwin	4	Pulaski	4	Wilkes	17
Coweta	3,001	Jackson	146	Putnam	49	Wilkinson	8
Crawford	12	Jasper	47	Quitman	1	Worth	10
						Total in Georgia	45,183

** 465 are lost and deceased.

Source: Office of Development and Alumni Relations

Number of West Georgia Alumni in the United States as of December 2010

State	Total	State	Total
Alabama	1,289	Montana	15
Alaska	28	Nebraska	11
Arizona	129	Nevada	40
Arkansas	66	New Hampshire	21
California	417	New Jersey	79
Colorado	197	New Mexico	40
Connecticut	38	New York	160
Delaware	20	North Carolina	749
District of Columbia	36	North Dakota	4
Florida	1,517	Ohio	135
Georgia	45,539	Oklahoma	61
Hawaii	13	Oregon	61
Idaho	18	Pennsylvania	147
Illinois	122	Rhode Island	9
Indiana	122	South Carolina	536
Iowa	22	South Dakota	9
Kansas	45	Tennessee	904
Kentucky	161	Texas	508
Louisiana	108	Utah	37
Massachusetts	11	Vermont	9
Maryland	146	Virginia	379
Maine	65	Washington	127
Michigan	83	West Virginia	25
Minnesota	55	Wisconsin	56
Mississippi	143	Wyoming	16
Missouri	82	Total in United States	54,597

** 1267 are lost, deceased, or alumni in foreign countries.

Source: Office of Development and Alumni Relations

Campus Facilities and Grounds



Campus Planning and Facilities

University of West Georgia’s Department of Campus Planning and Facilities consists of the Office of the Assistant Vice President for Campus Planning and Facilities, Campus Planning and Development, Risk Management/Environmental Health and Safety, and Facilities and Grounds. Its mission is to professionally operate, maintain, and support the development of quality facilities, grounds, and services, and to support the campus community, students, faculty and staff. Through their efforts they support the university’s commitment to the pursuit of academic excellence in a personal learning environment with cost-effectiveness, safety and in an environmentally responsible manner.

Facilities and Grounds is comprised of the Work Information Center, Maintenance, Motor Pool, Custodial Services, Moves/Set-ups, Paint Shop, Construction and Landscaping, and Grounds Maintenance. The function of repair and routine maintenance, energy management, and special projects are scheduled, performed, and managed for the more than 1.7 million square feet of building floor space. Displaying an ongoing and pleasing attitude to its customers, the staff is always willing to address any needs or concerns any given time, seven days a week.

UWG’s campus is considered to be one of the most beautiful in the University System of Georgia. Landscaping and Grounds Maintenance continue a long tradition of

systematic landscaping that began in 1919 when Fourth District A&M School Principal, John H. Melson, solicited gifts of trees from each of the then forty-eight states for transplantation to the school campus. UWG landscapers care for the many plant species residing on the almost 400 acre campus. They also construct and maintain irrigation systems, curbs, gutters, sidewalks, and athletic fields. A University nursery cultivates plants for seasonal, new, or replacement landscaping.

Campus Planning and Development provides expertise for all planned works. The department has architectural, engineering, and drafting capabilities within the design group. The department also acts as project managers for contracted work, which happens often due to the scope of work involved and/or the time constraints imposed by the priority level of a project.

The mission of Risk Management/Environmental Health and Safety Department (RM/EHS) is to protect UWG’s students, visitors, faculty and staff through training, education, hazard abatement and information dissemination. Additionally, they will assist in the preparation of the students for the future in the area of environmental health and safety. RM/EHS ensures that all activities conducted on campus either meet or exceed requirements set by local, state and federal agencies, thus enhancing the overall working environment while fully supporting the education mission on campus.

Source: Campus Planning and Development

University of West Georgia Land Holdings

<i>Property</i>	<i>Acres</i>
Main Campus	375.44
Northwest Campus	244.26
Evergreen Property	25.32
Total	645.02

Source: Campus Planning and Development

University of West Georgia

Campus Facilities

As of June 30, 2010

<i>Facility</i>	<i>Date of Construction or Acquisition</i>	<i>Approximate Square Footage</i>	<i>Investment*</i>	<i>Approximate Replacement Cost or Present Value**</i>
Bonner House	1843	2,246	8,000	179,680
Kennedy Chapel	1893	880	27,000	193,600
Melson Hall	1907	13,141	48,000	2,102,560
Honors House	1907	3,892	17,000	544,880
Honors Annex	1907	1,080	24,000	129,600
Alumni House	1930	8,335	120,000	1,333,600
Mandeville Hall (<i>Elevator Added</i>)	1935	11,946	103,000	1,911,360
Martha Munro	1935	10,041	53,000	1,907,790
Old Auditorium	1937	18,172	126,000	3,452,680
Sanford Hall	1938	10,118	170,000	1,618,880
Weight Building	1944	1,420	3,000	71,000
University Communications and Marketing	1948	2,675	1,000	321,000
Aycock Hall	1952	28,709	300,000	4,593,440
Anthropology Building	1954	15,902	277,000	2,782,850
Richards College of Business and Annex	1958	33,086	2,024,000	6,286,340
Parker Hall	1959	17,225	229,000	2,756,000
Art Annex	1959	8,885	40,000	1,554,875
Callaway Building	1962	22,154	309,000	4,873,880
Row Hall	1963	35,495	927,000	5,679,200
Cobb Hall (<i>Elevator Added</i>)	1964	25,931	503,000	4,148,960
Strozier Hall	1964	23,065	497,000	3,229,100
Gunn Hall (<i>Two Elevators Added</i>)	1965	39,042	760,000	5,075,460
Boykin Hall	1966	37,889	681,000	4,925,570
University Community Center	1967	62,673	1,566,000	9,087,585
Boyd Building	1968	38,570	767,000	7,714,000
Library	1968	109,155	3,428,000	22,922,550
Pafford Building	1968	43,158	758,000	7,552,650
Downs Hall	1969	62,397	1,388,000	8,111,610
Humanities	1970	77,328	1,489,000	13,532,400
Watson Hall	1970	57,036	1,324,000	7,414,680
Education Center	1970	63,688	4,188,000	11,145,400
Health Services	1971	9,114	371,000	1,959,510
Bowdon Hall	1971	58,797	1,587,000	7,643,610
Strozier Annex	1972	26,801	750,000	3,484,130
Biology Building	1972	72,560	2,300,000	14,512,000
Facilities/Plant Operations	1972	12,674	140,000	1,774,360
Warehouse/Supplies	1972	7,608	98,000	380,400
Vehicle Repair Shop	1972	3,900	40,000	175,500
Tyus Hall	1973	51,119	1,329,000	8,179,040
Chemical Storage	1974	300	3,000	30,000
Food Service (Z6)	1974	58,569	1,584,000	9,371,040

*Rounded to the nearest \$1,000

**From the Facilities Inventory Report and are determined by the Board of Regents.

Source: *Campus Planning and Development*

Campus Facilities

<i>Facility</i>	<i>Date of Construction or Acquisition</i>	<i>Approximate Square Footage</i>	<i>Investment*</i>	<i>Approximate Replacement Cost or Present Value**</i>
Locksmith/Electronics	1974	987	4,000	78,960
Facilities Storage and Shed	1974	5,054	51,000	126,350
Observatory	1979	484	16,000	38,720
Football Field House (Murphy Bldg)	1980	25,772	668,000	2,834,920
Track Storage	1980	800	5,000	88,000
Newnan Center Bldg. 2000	1980	3,200	320,000	512,000
Newnan Center Bldg. 3000	1980	2,400	25,000	84,000
Student Activities Center	1981	9,000	91,000	990,000
Storage Warehouse	1981	5,822	27,000	203,770
Football Storage	1984	600	6,000	66,000
Publications and Printing	1985	7,585	135,000	606,800
Townsend Center for the Performing Arts	1987	28,721	2,934,000	5,456,990
Bookstore (Rental)	1987	8,001	7,000	1,120,140
Intramural Restroom	1988	528	7,000	58,080
Public Safety Storage	1988	245	1,000	12,250
Art Anagama Kiln	1990	400	1,000	10,000
Dugout Home	1992	513	6,000	56,430
Dugout Visitors	1992	513	6,000	56,430
Baseball Press Box	1992	1,768	50,000	194,480
Waring Archaeology Lab	1992	6,296	32,000	440,720
Architecture,Engineering,Construction Svcs.	1992	2,400	40,000	192,000
Performing Arts Center Warehouse/Storage	1992	2,413	22,000	84,455
Newnan Center Bldg. 1000	1992	11,400	600,000	1,824,000
West Communications Hut	1994	253	33,000	88,550
Education Center Annex	1995	41,667	4,347,000	8,958,405
Archaeology Storage Building	1995	288	3,000	8,640
Technology- Enhanced Learning Center	2000	115,811	20,204,000	26,057,475
Landscape Storage Shed	2002	1,800	18,000	45,000
Adamson Hall	2003	21,406	2,785,000	4,067,140
Band Storage	2003	720	29,000	21,600
Landscaping Greenhouse	2003	3,000	60,000	210,000
Suite 1 (Rental)	2004	51,365	4,877,000	5,393,325
Suite 2 (Rental)	2004	36,976	3,511,000	3,882,480
Suite 3 (Rental)	2004	44,169	4,193,000	4,637,745
Commons (Rental)	2004	6,440	624,000	676,200
Soccer Field Restrooms	2004	260	13,000	16,900
Landscaping Shed	2004	250	4,000	5,000
Photography Studio	2005	903	65,000	108,360
Arbor View Apartment "A" (Rental)	2005	73,352	4,418,000	7,701,960
Arbor View Apartment "B" (Rental)	2005	62,885	3,573,000	6,602,925
Arbor View Apartment "C" (Rental)	2005	53,268	3,144,000	5,593,140

*Rounded to the nearest \$1,000

**From the Facilities Inventory Report and are determined by the Board of Regents.

Source: *Campus Planning and Development*

Campus Facilities

<i>Facility</i>	<i>Date of Construction or Acquisition</i>	<i>Approximate Square Footage</i>	<i>Investment*</i>	<i>Approximate Replacement Cost or Present Value**</i>
Facilities Storage Building	2006	10,000	194,000	250,000
Campus Center (HPE 1965)	2006	131,448	21,817,000	24,975,120
Callaway Building Annex	2008	29,500	4,990,000	6,490,000
Coliseum (Health and Wellness Building)	2008	122,500	23,044,000	26,950,000
Greek Village A Kappa Delta (Rental)	2009	6,328	654,000	791,000
Greek Village B Kappa Alpha (Rental)	2009	5,150	528,000	643,750
Greek Village C Pi Kappa Phi (Rental)	2009	6,328	654,000	791,000
Greek Village D Alpha Xi Delta (Rental)	2009	6,328	654,000	791,000
Greek Village E Alpha Tau Omega (Rental)	2009	5,150	528,000	643,750
Greek Village F Alpha Gamma Delta (Rental)	2009	6,328	654,000	791,000
Greek Village G Delta Chi (Rental)	2009	3,268	331,000	408,500
Greek Village H Tri Delta (Rental)	2009	6,328	654,000	791,000
Greek Village I Pi Kappa Alpha (Rental)	2009	5,150	528,000	643,750
Greek Village J Phi Mu (Rental)	2009	6,328	654,000	791,000
Greek Village K (Rental)	2009	3,632	377,000	454,000
Greek Village L (Rental)	2009	3,268	331,000	408,500
Greek Village M (Rental)	2009	3,632	377,000	454,000
Greek Village N (Rental)	2009	3,268	331,000	408,500
Greek Village O Chi Omega (Rental)	2009	6,328	654,000	791,000
Greek Village P Kappa Sigma (Rental)	2009	6,328	654,000	791,000
Greek Village Q Community Center (Rental)	2009	3,011	300,000	376,375
Greek Village R Guest House (Rental)	2009	1,945	200,000	243,125
Stadium Home Restrooms North (Rental)	2009	3,807	1,250,000	837,540
Stadium Home Restrooms South (Rental)	2009	3,807	1,250,000	837,540
Stadium Home Tickets (Rental)	2009	408	100,000	89,760
Stadium Home Concessions North (Rental)	2009	944	250,000	207,680
Stadium Data/Mech/Electrical (Rental)	2009	759	50,000	121,440
Stadium Security (Rental)	2009	756	100,000	120,960
Stadium Home Concessions South (Rental)	2009	944	250,000	207,680
Stadium Press and Suites (Rental)	2009	15,496	5,089,000	3,409,120
Stadium Visitor RR and Tickets (Rental)	2009	4,198	1,000,000	923,560
Stadium Visitor Concessions/Lockers (Rental)	2009	3,415	1,000,000	751,300
Stadium Administrative Office (Rental)	2009	41,623	5,000,000	4,994,760
Women's Fieldhouse (Rental)	2009	4,361	1,132,000	959,420
Softball Visitor Dugout (Rental)	2009	350	11,000	38,500
Softball Home Dugout (Rental)	2009	350	11,000	38,500
TOTALS		2,289,255	162,913,000	367,088,240

*Rounded to the nearest \$1,000

**From the Facilities Inventory Report and are determined by the Board of Regents.

Source: Campus Planning and Development

Information Resources and Technology



Irvine Sullivan Ingram Library

<http://www.westga.edu/library/>

As the academic heart of the campus, the Ingram Library provides both online and in-house collections and services to meet curricular needs. The four story building of some 85,000 square feet provides seating space for 700, an electronic classroom, a conference room, small group study rooms, lockable faculty carrels, and computers and other equipment for accessing materials retained in print, online, recorded, and micro formats. Wireless access to internet resources is available throughout the building.

The library is named in honor of Irvine Sullivan Ingram, the institution's first president. The glass enclosed lobby overlooks a study garden designed in honor of Maurice Townsend, fifth president of the university. The lobby area provides study tables and casual seating where patrons may enjoy food and drink while accessing the wireless network, working individually or in small groups, or browsing through the new books, current newspapers, and periodicals on display. Ingram Library houses a collection of student and faculty art, including "The Prophet," a bronze by Gary Coulter, presented by the Class of 1968, which stands at the entrance, and "Sporangium Disseminating Spores," a large ceramic installation by Cameron Covert and Bruce Bobick, completed in 1980. Rotating displays of student art and writing inspired by programs developed by the Thomas B. Murphy Holocaust Teacher Training and Resource Center, which is located on the second floor of the library, may be viewed in the Center and in the lobby.

Library collections include over 400,000 cataloged volumes, over 1,100,000 microforms, over 11,000 audiovisual items, and more than 20,000 maps and charts. The library provides access to some 15,000 print and electronic serials, including magazines, scholarly journals, and newspapers. As a selective depository for federal documents, the library houses an extensive collection of United States government publications and provides access to government information available in online and other electronic formats.

The library participates in state and regional consortia, facilitating extensive access to the collective resources of university system and other libraries. The library catalog, provided through Georgia Interconnected Libraries (GIL), lists materials available in Ingram Library collections, and provides links to catalogs of other libraries. West Georgia students, faculty, and staff may request books from any university system library through the online GIL Express service, a feature of the universal catalog, and they also have check out privileges when visiting system libraries. In addition, the University of West Georgia is a member of the Atlanta Regional Council for Higher Education (ARCHE), which allows students, faculty and staff to utilize the resources of member libraries.

Ingram Library provides interlibrary loan service through its web site, facilitating the borrowing of books from libraries throughout the country. Articles requested through interlibrary loan are transmitted to patrons electronically.

Library users have access to Georgia Library Learning Online (GALILEO), an online library of databases, full text electronic journals, and reference resources available to all Georgians, as well as to an extensive range of electronic materials selected to support the university's academic programs. All licensed electronic materials are available to university students and faculty through any computer with internet access. By providing access to an extensive range of online materials, developing an electronic reserve system and online request systems for obtaining materials from other libraries, the library ensures that students enrolled at the university's remote class sites and in online courses are afforded the same level of library support as those who attend classes on the Carrollton campus. Fax and courier services to off campus class sites, and arrangements with libraries in Newnan and other locations also support off campus students.

The Annie Belle Weaver Special Collections area on the third floor of Ingram Library provides access to information about the history of the university and the geographic area it serves. Photographs, family histories, and other materials associated with the west Georgia region are included in Special Collections, as are materials on sacred harp music and American psalmody. A special effort is being made to acquire the manuscript collections of individuals who have represented the region in state or national legislative bodies. One of the most notable collections is that associated with Georgia's Political Heritage Program, begun by university faculty in 1985. The collection includes taped interviews with state and national leaders, among them most of Georgia's post-World War II governors, U.N. Ambassador Andrew Young, U.S. House Speaker Newt Gingrich and Georgia House Speaker Tom Murphy. Senator Herman Talmadge was the first interview subject for the program. The Talmadge collection is particularly significant as it includes some thirty-five interviews taped between 1985 and 1995 as well as interviews with his staff and some of his supporters.

Information about library programs and services is distributed through publications available in the building, and through the library web site. An online newsletter chronicles developments within the library, while an online announcements site outlines upcoming events, programs and classes.

The library pursues an aggressive instruction program. A for-credit course, which is part of Area B of the core curriculum, is taught in the library's computer-enhanced classroom as well as via the web. The course is designed to orient students to doing research in academic libraries and to critically evaluating information resources. Throughout the semester students may register on the library web site to attend basic library skills classes addressing various topics. In addition, classes tailored to specific assignments and other types of customized instruction are developed for upper-level and graduate courses. Individuals seeking assistance with library resources and research needs can utilize reference services at the reference desk, via telephone, and through the online *AskAL* service available through the library web site.

Source: Irvine S. Ingram Library

Thomas B. Murphy Holocaust Teacher Training and Resource Center

The Thomas B. Murphy Holocaust Teacher Education Training and Resource Center, administered by the Georgia Commission on the Holocaust and located on the second floor of Ingram Library, is the only Holocaust center in the United States devoted to teacher training located in a state-supported institution. With the study of the Holocaust as a catalyst, the Center encourages and supports human understanding and dignity by developing programs to open minds and hearts to the appreciation of all of humankind. The Center's multimedia resource collection includes books, videotapes, archival, and electronic materials augmented by resources available within the collections of Ingram Library. Working collaboratively with academic departments and area organizations, the Center provides curriculum development assistance, teacher conferences, staff development seminars, exhibits, and other programs.

Source: UWG Undergraduate Catalog 2010-2011

University of West Georgia

Library Acquisitions and Services

Fiscal Years 2001 – 2010

Holdings	2001	2002	2003	2004	2005
Volumes added during the year	10,200	8,050	8,359	9,681	7,543
Volumes at end of the year	370,896	378,946	384,249	391,330	397,169
Reels of microfilm at end of year	23,230	23,047	22,827	22,773	24,447
Physical units of other microtext at end of year	1,080,079	1,104,126	1,117,611	1,132,936	1,143,479
Periodical titles received at end of year*	1,387	1,342	1,226	1,194	1,101
Electronic Periodical Titles	-	-	-	-	-
Items					
U.S. Documents	208,215	207,525	206,718	201,779	201,779
U.S. Documents (Volumes on Microfiche)**	86,576	84,807	86,775	75,198	65,854
Collection Development					
Expenditures for Supplies and Materials-Books	355,965	438,085	419,268	554,758	699,840
Expenditures for Periodicals	244,717	370,189	396,944	331,843	534,350
Expenditures for Audio Visual Materials	10,056	4,509	8,452	5,482	10,953
Circulation***	75,369	74,107	65,571	48,524	46,401
Interlibrary Loans					
Borrowed	3,692	2,724	3,453	3,097	5,538
Loaned	4,920	5,538	5,746	5,239	8,106
Full Text Retrievals from electronic databases	-	-	-	235,622	319,747
Credit Hours Generated LIBR1101	565	776	824	807	604
Reference Questions ****	33,956	8,632	8,632	23,504	13,200
Holdings	2006	2007	2008	2009	2010
Volumes added during the year	12,704	8,667	5,524	12,567	6,063
Volumes at end of the year	404,580	413,782	423,903	406,989	433,661
Reels of microfilm at end of year	24,554	24,544	24,544	22,046	24,554
Physical units of other microtext at end of year	1,142,429	1,098,523	1,143,479	485,460	1,092,995
Periodical titles received at end of year*	1,228	1,228	1,247	932	823
Electronic Periodical Titles	-	21,000	27,142	30,040	51,672
Items					
U.S. Documents	202,339	212,545	204,774	198,883	182,966
U.S. Documents (Volumes on Microfiche)**	58,655	59,655	31,734	46,708	30,204
Collection Development					
Expenditures for Supplies and Materials-Books	683,620	269,618	497,447	378,757	576,345
Expenditures for Periodicals	371,710	464,806	458,844	412,439	456,458
Expenditures for Audio Visual Materials	19,668	8,200	19,378	5,207	6,104
Circulation***	45,667	55,187	51,631	60,924	49,142
Interlibrary Loans					
Borrowed	3,045	2,270	2,347	1,858	1,753
Loaned	4,968	4,696	4,891	5,316	4,600
Full Text Retrievals from electronic databases	343,268	***	702,377	370,939	405,267
Credit Hours Generated LIBR1101	492	442	496	484	610
Reference Questions ****	13,200	9,850	10,750	10,641	8,816

* Based on E Journals Search Results via SFX Knowledge Base 12/1/2007

** Decline due to electronic resources

*** Vendor Statistics incomplete as of Reporting date

**** Statistical Change

Source: Irvin Sullivan Ingram Library

Information Technology Services

<http://www.westga.edu/its/>

Information Technology Services (ITS) provides technology leadership and support to all areas of the University of West Georgia community. ITS offers a wide variety of services, from user assistance and training, to the planning and maintenance of the campus technology infrastructure. Providing this range of services makes ITS role a very challenging one. To successfully meet the challenge, ITS is continually upgrading the services and equipment that are available to the campus community.

ITS manages the campus' administrative and residence hall data and telephone networks, as well as the computer systems that provide email, web, and other mission critical services. High-speed Internet access is provided through a link to PeachNet, operated by the University System of Georgia. Wireless access is available in most academic buildings, and in common areas of the residence halls. Student computer labs are located in the College of Business, the Technology-enhanced Learning Center, the College of Education, and the University Community Center. Many of these labs are used for instruction; however, the University Community Center computer lab is an open lab for general use.

Information Technology Services is also responsible for the installation, maintenance, and training of the classroom Audio Visual (AV) equipment. A wide-range of AV technology, including cameras, microphones, sound systems, and projectors is also available for checkout. In addition, ITS provides multimedia services including creation, modification, duplication and format conversion for graphic images, videos, and audio media. Scanning of documents, pictures, negatives and 35 mm slides is also available.

Source: Information Technology Services 2010-2011

Institutional Research and Planning



Institutional Research and Planning

www.westga.edu/irp

History

The Department of Institutional Research and Planning at West Georgia was established in 1967. Through various studies, IRP evaluates the University culture by investigating campus community norms and values. Research findings aid the administration in determining the institutional climate and provide a basis for policy analysis and identification of potential problems. In the early 1980's, University of West Georgia was the first University System of Georgia institution to conduct institutional retention studies. Retention studies indicate causes of attrition, and such studies analyze retention-attrition behavior and provide a basis for policy revisions, such as establishing alternative admissions criteria and strategic enrollment planning.

Mission

The University of West Georgia's strong commitment to "Educational Excellence in a Personal Environment" is central to the mission of the Department of Institutional Research and Planning. The Department has, as its primary mission, the collection of data (from both internal and external sources) and the timely analysis, distribution, and presentation of information for use in planning, decision-making, and policy formulation at the University.

The Department is also responsible for ensuring the accuracy of vital university statistics and for reporting these data to a broad spectrum of stakeholders including regulatory entities, management, faculty, private organizations, parents and the general public. Another major function of the Department is to respond to diverse requests for data from members of the University community as well as the public at-large and to assist with research, evaluation and analysis.

Institutional Research and Planning also serves as records custodian for the University of West Georgia. In this capacity, it promotes an efficient administration and management of State governmental records in compliance with the Georgia Records Act and the Georgia Open Records Act. Institutional Research and Planning also advises departments on appropriate records-keeping techniques and systems

Institutional Research supports the University development efforts by providing institutional information for external fund-raising projects, conducting case studies for use in fund drives, and providing information necessary for data-based development strategies. Institutional Research techniques routinely provide evidence that development efforts may utilize to assess their own effectiveness and to consider the viability of new development strategies.

Goals

The Department of Institutional Research and Planning adopted the following goals to facilitate institutional effectiveness and to foster mechanisms to assess results:

- Serve the executive functions of the institution by providing a reliable and proactive data-based support to enhance decision making.
- Promote an improvement of West Georgia's planning process in compliance with the Board of Regents' policies and the Southern Association of Colleges and Schools' criteria.
- Generate data, information, and analytical reports on institutional research topics designed to improve information usage in the planning process at the University.
- Provide support to facilitate institutional assessment geared toward institutional effectiveness.
- Provide systematic collection and reporting of standard institutional, regional, environmental, and student-centered information for institutional planning and assessment.
- Reply in a punctual manner to spontaneous requests for data, descriptive information, and analytical reports.
- Provide guidelines and standards to various departments for establishing and maintaining successful individual records management programs that comply with the Georgia Records Act and the Open Records Act.

Institutional Research and Planning

www.westga.edu/irp

Major Projects

The Department of Institutional Research conducts various studies and provides support in completing the following projects:

- Annual Report of Institutional Progress
- Annual SACS Institutional Profile Update
- Assorted External Surveys
- Collegiate Learning Assessment
- Comparator and Aspirational Peer Institutions Analysis
- Consortium for Student Retention Data Exchange
- Five-Year Departmental Report
- Institutional Key Performance Indicators
- Institutional Strategic Plan
- Minority Student Survey
- Multicultural Festival Survey
- National Study of Instructional Costs and Productivity
- National Survey of Student Engagement
- NCAA Athletic Interest Survey
- NCAA Enrollment and Persistence-Rates Disclosure Report
- Records Management
- The Chronicle's Great Colleges to Work For Survey
- U.S. Department of Education's IPEDS Reports
- University Printed Fact Book
- University On-line Fact Book

(www.westga.edu/irp)

The Department continues to provide assistance to various departments and committees regarding preparation for re-accreditation by:

- Southern Association of Colleges and Schools
1866 Southern Lane, Decatur, Georgia 30033-4097
Telephone number 404-679-4501

- AACSB International – The Association to Advance Collegiate Schools of Business
- American Chemical Society
- Board for Engineering and Technology
- Commission on Collegiate Nursing Education
- Computing Accreditation Commission of the Accreditation
- Council for Humanistic Transpersonal Psychology
- National Association of Schools of Music
- National Association of Schools of Art and Design
- National Association of Schools of Theatre
- National Association of Schools of Public Affairs and Administration

The Department's staff are active in their professional fields, attending several state and national conferences, and participating in several workshops. Staff made presentations at professional meetings and were active participants in a number of sessions as moderators.

The unit collects, analyzes, and reports data and information relative to this institution and the University System's enrollment, graduation rates, course taking behavior, academic achievement, persistence rates, declared majors, and degrees conferred. Other efforts to perpetuate thoughtful planning include production of annual Just-the-Fact and the Fact Book. The unit responds to many requests for data pertaining to enrollment, student demographics, academic program statistics, and general environmental indicators. Additionally, the Department handles all open records requests in compliance with the Georgia Open Records Act.

Completed Requests

Open Records and Subpoenas	112
Projects	73
Requests by e-mail/phone	415
Records Management	71
Surveys	71

Institutional Research and Planning Website

www.westga.edu/irp

The IRP website is a repository of data and information, providing ready access to all UWG stakeholders for data-based decision-making.

To facilitate and maintain a data-driven environment for planning and decision making, the Department of Institutional Research and Planning makes data easily available to all stakeholders through its interactive website. The site is continually updated to provide current data and ensure unaided access and correct interpretation of the data posted.

From March 2010 to March 2011, 755 unique visitors used the website with total visits of 4,194 which resulted in 16,449 page views. On average, the visitors reviewed about 4 pages and spent an average of 4 minutes on the site. Of the total site users, 82.5 percent were returning visitors while 17.5 percent were new visitors.

About 17 percent of the visitors accessed the site just once. Another 26 percent visited the site from 2 times to 25 times per year. It is encouraging that the bulk of the website users (57 percent) frequently made good use of the site by returning more than 25 times per year. It is the hope of the Department of Institutional Research and Planning that more faculty and staff will be using this site for collecting relevant data about UWG for evidence-based decision making on campus.

Website Visits

Frequency of Visits	Once	2-4 Times	5-8 Times	9-14 Times	15-24 Times	26-50 Times	51-100 Times	101-200 Times	201+ Times	Total Visits
Number of Visits	732	396	211	199	277	527	568	440	844	4,194
Percent of Visits	17	9	5	5	7	13	14	10	20	100

New and Returning Visitors

