

1981 - 1982 West Georgia College Fact Book



step up to . . . West Georgia College

The Office of Instructional and Research Services
West Georgia College
Carrollton, Georgia 30118-0001

West Georgia College

Carrollton, Georgia 30118

A SENIOR COLLEGE IN THE UNIVERSITY SYSTEM OF GEORGIA

404-834-1388

OFFICE OF THE PRESIDENT



Dear Colleagues:

The West Georgia College Fact Book contains a multitude of data designed for your use in meeting diverse information needs. It reflects our impressive growth and development for much of the past decade.

The facts and figures contained herein indicate much about the breadth and depth of West Georgia College and the progress it has made through the years.

The bottom line, we feel, is that the resources made available to us by the Board of Regents of the University System of Georgia, the General Assembly, and the Governor are being used effectively to improve the quality of life for the people of Georgia.

The Office of Instructional and Research Services prepared this document by gathering data and information from many other offices. I wish to express my appreciation to all for their cooperation.

Sincerely,

Maurice K. Townsend

WEST GEORGIA COLLEGE FACT BOOK

Preface and Acknowledgements

The West Georgia College *Fact Book 1981-1982* provides a ready source of information about the College. Through the data, tables, graphs and charts contained in this volume emerges a profile of this institution and a history of its growth as a major senior college in the University System of Georgia.

The *Fact Book* answers frequently asked questions about West Georgia College. Students, faculty, staff, alumni and friends are encouraged to suggest additional or more detailed information to be included in future editions.

The West Georgia College *Fact Book 1981-1982* was designed and edited under the supervision of Dr. Randall R. Powell, Assistant Director of Instructional and Research Services. Special recognition is given to Ms. Laura H. Lamb, Institutional Research Analyst, Mr. Robert O. Ingle, Research Programmer, and Mr. Daniel L. Youngblood, Budget Analyst III, for their tireless efforts to make the *Fact Book* an accurate research and planning tool. In addition, we wish to thank those in many different College units who have provided data and suggestions for the expansion and improvement of this publication. Finally, our gratitude is extended to Ms. Lisa W. Ledbetter, Director of Publications and Printing, and the Central Duplicating Staff for their dedicated service.

Richard A. Folk, Director
Instructional & Research Services

WEST GEORGIA COLLEGE FACT BOOK

Table of Contents

General Information

History of West Georgia College	2
Purpose of the College	3
Accreditations & Affiliations	3
Campus Description	4
Map of Campus	5

Administration

Board of Regents, University System of Georgia	7
WGC General Administration	8
WGC Academic Administration	8
WGC Organizational Chart	10

Student Information

SAT Scores of Entering Freshmen, 1974/75—1980/81	12
High School & Freshman Grade Point Averages of Entering Freshmen, 1974/75—1980/81	12
Composition of Student Body, Fall 1982	13
Minority Enrollment, Fall 1982	13
Geographic Distribution of Student Body, Fall 1982	14
WGC Enrollment from Counties in Primary Service Area, Fall 1982	15
Detailed Composition of Student Body, Fall 1976—1982	16
WGC Enrollment & Full Time Equivalents, 1976-1982	17
Student Headcount & FTE History with Percent Increase or Decrease, 1976-1982	18
Admissions Data: New Student History, Fall 1976-Fall 1982	19
History of Continuing Education Programs, FY 1976-FY 1982	19
Retention Rates of Fall Quarter Freshman Classes, 1974-1981	20
Age Distribution of WGC Students, Fall 1976 vs. Fall 1982	21
History of Changes in Ages of WGC Students, Fall 1976-1982	22
Freshman & Graduate Enrollment, Fall 1971-Fall 1982	23
Enrollment by Sex, 1976-1982	24
Enrollment by Marital Status, 1976-1982	24
Undergraduate Academic Profile by Degree, Fall 1982	25
Graduate Academic Profile by Degree, Fall 1982	25
Student Financial Aid, Fiscal Years 1978-1982	26

Degree Information

Degrees & Majors Authorized By The Board of Regents, Fall 1982	29
Undergraduate & Graduate Degrees Conferred, 1971/72—1981/82	30
Degrees Conferred by Program and Level, 1974/75—1981/82	31

Faculty Information

Faculty Profile by Highest Degree Earned, 1981/82	34
Faculty Profile by Rank, 1981/82	34
Faculty Profile by Tenure Status, 1981/82	35
Faculty Profile by Sex, 1981/82	35
Summary of Faculty Profiles, 1981/82	36

Financial Information

Education & General Budget Expenditures, FY 80-FY 83	38
General Budget Growth, FY 73-FY 83	40
Distribution of Revenue by Source, FY 79-FY 83	41
Distribution of Expenditures by Function, FY 79-FY 83	42
E & G Expenditures Per FTE Student, FY 78-FY 83	43
Average Salary by Employee Category, FY 78-FY 83	43

Quarter Credit Hour Information

Average Quarter Credit Hours Per Student Enrolled By Level, Fall 1972-1982	45
Detailed Enrollment & QCH History, FY 76-FY 83	46
Headcount Relative to the FTE & QCH History, Fall 1971—Fall 1982	47

Research

Distribution of Grants and Contracts, Fiscal Year 1982	49
Faculty Research Grants, Fiscal Year 1982	50

Alumni Association

WGC Alumni Association	52
Officers of Alumni Association	52
WGC Foundation	53
Officers and Board of Trustees, WGC Foundation	53
Annual Fund Drive Results	54
Geographical Distribution of Alumni, 1981	
State of Georgia	55
United States	56

Physical Plant

Classroom Utilization, Fall 1982	58
Laboratory Utilization, Fall 1982	59
Physical Plant	60
Land Holdings	61

Library

Irvine S. Ingram Library	63
Library Acquisitions, FY 79-FY 82	64

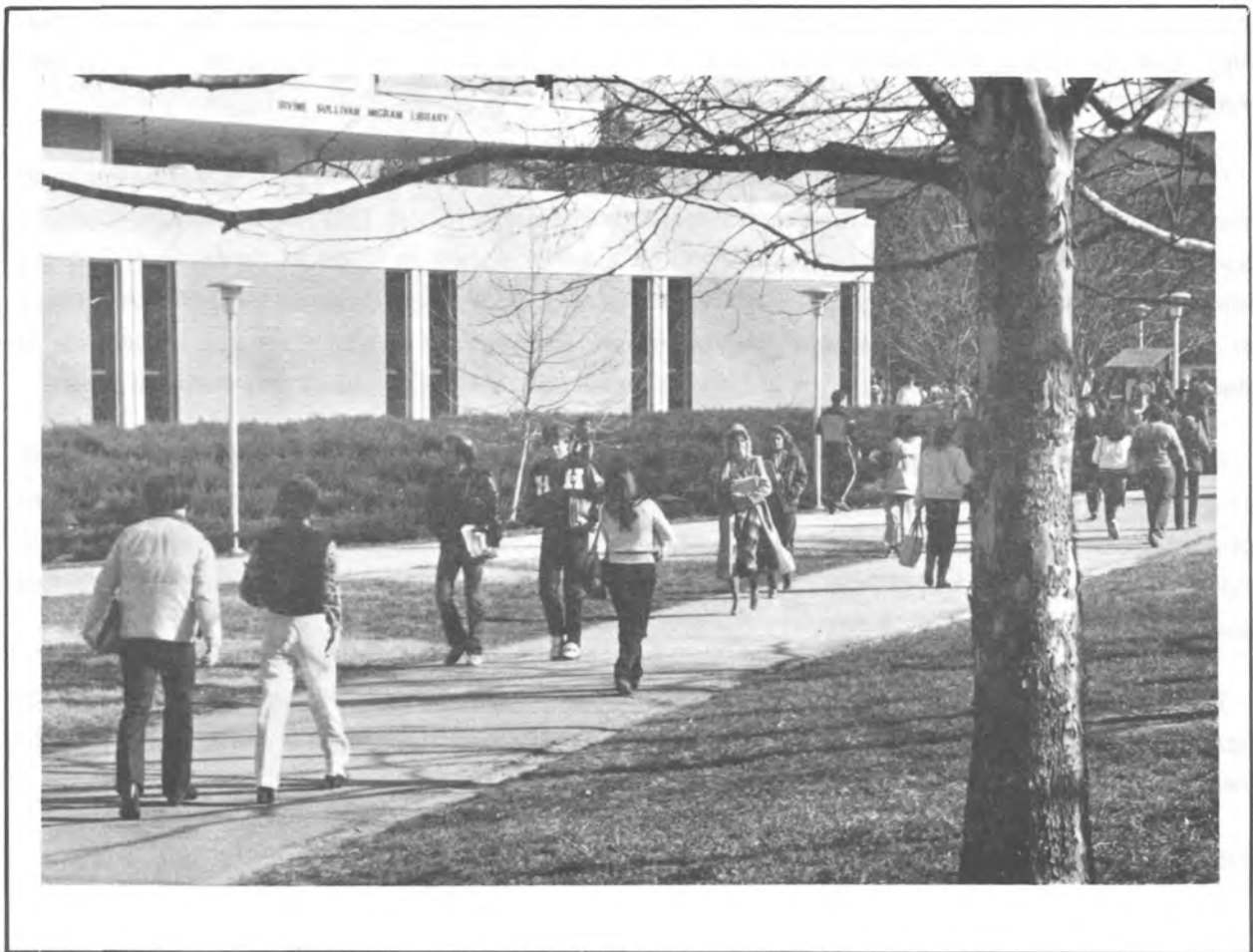
Computer Resources

Hardware 66
Utilization..... 67

Student Services

Admissions 69
Financial Aid 69
Health Services 69
Intercollegiate Athletics..... 69
Intramurals & Recreation 69
Placement & Cooperative Education..... 69
Registrar's Office..... 70
Residence Life 70
Student Activities 70
Student Development..... 70

General Information



WEST GEORGIA COLLEGE

HISTORY

West Georgia College is a coeducational, residential, liberal arts institution located in Carrollton, Georgia. A senior college unit of the University System of Georgia, it enrolls students from most counties in Georgia, as well as from other states and several foreign countries.

The College is situated within the western limits of Carrollton, the county seat of Carroll County. The metropolitan area of Carrollton, with a population of approximately 25,000, provides an ideal combination of small-town neighborliness and big-city progressiveness. The College's physical facilities, valued at more than \$86 million, include over forty structures of learning, living, and recreation on its 398-acre wooded campus.

West Georgia College originated as the Fourth District Agricultural and Mechanical School, one of ten such institutions established by the State of Georgia in 1906. Twenty-seven years later, Carrollton's A & M School became West Georgia College, a junior college established by an act of the Board of Regents of the University System of Georgia.

In 1939, the College was authorized by the Board of Regents to add a three-year program in elementary education. In 1957, the institution was authorized to confer the B.S. degree in Education, making it a four-year senior college unit of the University System of Georgia. Two years later, West Georgia College added the Bachelor of Arts degree in the fields of English, history, and mathematics.

During the following twelve years, West Georgia College became one of the fastest growing institutions of higher learning in the South. From an enrollment of 576 in 1957, the institution's student body doubled every four years. Now with an enrollment of more than 6,000 students, West Georgia offers seven undergraduate degrees, the Bachelor of Arts, Bachelor of Science, Bachelor of Science in Education, Bachelor of Business Administration, Bachelor of Music, Bachelor of Science in Recreation, and Bachelor of Science in Earth Science with majors in nearly fifty different fields.

In 1967, the Board of Regents authorized the initiation of a graduate program at the master's level. The following six Masters degrees are offered in a combined total of thirty-three areas of study: Master of Arts, Master of Business Administration, Master of Education, Master of Music, Master of Public Administration, and Master of Science. The Specialist in Education degree is offered in seven areas of study.

The Associate of Arts, with a major in education, and the Associate of Science, with majors in computer science, criminal justice, nursing, and office administration, have all been added as two-year programs since 1973.

SOURCE: WGC Undergraduate Catalog, 1982-83

PURPOSE OF THE COLLEGE

West Georgia is a multi-purpose public institution providing a liberal arts experience for all its students as a base for their entire educational program. It provides educational preparation in the liberal arts and for professional careers, community college terminal instruction for students from the local geographical area, and special academic options in honors, general and transitional program areas. It seeks to provide a distinctive and realistic educational environment wherein each student may attain a disciplined and open mind, a capacity for self development, and the knowledge and skills essential for living in a free society. This environment includes the opportunity for original thinking, the exchange of ideas, and scholarly involvement with one's natural and cultural heritage.

In the fulfillment of this purpose, the College asserts its faith in higher education, liberal and otherwise, for all who earnestly seek it and can profit from it. The College emphasizes creative teaching, encourages research, and promotes the general advancement of knowledge through undergraduate and graduate programs within a broad spectrum of studies. Programs and services vital to student life, including attention to physical and mental well-being and the problems of adjusting to societal mores, are provided to complement these academic aims. The College also seeks to serve as a center to promote the development of human and natural resources through continuing education and public service programs.

ACCREDITATIONS AND AFFILIATIONS

West Georgia College is fully accredited through the master's level by the Southern Association of Colleges and Schools. All programs preparing teachers through the master's level are accredited by the National Council for Accreditation of Teacher Education. The teacher education programs are fully recognized and accredited by the Georgia State Department of Education. Other specific academic programs with accreditation are the music program by the National Association of Schools of Music and the nursing program by the National League for Nursing and the Georgia Board of Nursing.

The College holds institutional membership in the following organizations:

- American Council on Education
- American Association of State Colleges and Universities
- American Association of Colleges for Teacher Education
- American Assembly of Collegiate Schools of Business
- Georgia Association of Colleges
- National Association for Foreign Student Affairs
- National Association of Schools of Music
- National Business Education Association
- National Commission on Accrediting
- National Council for Accreditation of Teacher Education
- Southern Association of Colleges and Schools

SOURCE: WGC Undergraduate Catalog, 1982-83

THE CAMPUS

The campus is a unique blend of the old and the new. Covered with a variety of trees and flowers, the 398-acre campus is dotted with structures of the early 1900's, as well as buildings exemplifying the most contemporary modes of architecture.

On the front or "Old Campus" as it is sometimes called, a three-block-long expanse of rolling hills shaded by scores of old, towering oak, elm, and maple trees surrounds a number of faded brick buildings stretching in a semi-circle adjacent to the park. This is where West Georgia College began as an A & M School in 1906.

Beyond the Old Campus is a modern academic complex composed of a library, social science, humanities, and math-physics buildings, all constructed in recent years. Other new buildings in the area include a three-story student center, a health and physical education center featuring a 3,000 seat gymnasium and an indoor pool, and one of the most modern college infirmaries in the state.

Much of the College's recent physical development has been on the western side of the campus. Located in the area is one of the most unique structures in the University System, the Education Center. Completed in the summer of 1970, the center epitomizes the newest concepts in school architecture. The ultra-modern structure contains five large lecture-demonstration rooms which can be changed by sliding partitions into an auditorium seating nearly 1,000, and instructional materials center, television and sound recording studios, audio-visual laboratory and dark room, counseling rooms, group observation rooms, study carrels, and other areas of independent study.

Adjacent to the Education Center is the Biology-Chemistry Building, a facility completed in early 1973 and including numerous laboratories, classrooms, lecture halls, and the latest scientific equipment. Other new buildings in the area include a five-story residence hall that houses upperclassmen, graduate students, and married students; a three-structure plant operations compound; a food service and activity center that went into operation winter quarter, 1976; and an observatory completed in 1979.

Eleven residence halls are located on the campus, including the five-story high rise hall mentioned above. One of the newest halls, Bowdon Hall, was opened in the fall of 1971 and was named in honor of Bowdon College, a predecessor of West Georgia College.

Two of the oldest structures on campus are the Kennedy Interfaith Chapel and the Bonner House. The Kennedy Chapel was named in memory of the late President John F. Kennedy. The chapel, once owned by the Episcopal Church and the Catholic Church, was given to the College for interdenominational use. It was dedicated by the late Robert F. Kennedy in 1966. The Bonner House, constructed in 1843, is the oldest building on campus. Because of its historical nature, the house was selected by the Georgia Historical Commission as the site for a marker outlining the history of the College. The Bonner House was the center of a restoration project completed in 1977 and now serves as a Visitor Center for the campus.

SOURCE: WGC Undergraduate Catalog, 1982-83

Administration



THE UNIVERSITY SYSTEM OF GEORGIA

1982/83

BOARD OF REGENTS

Rufus B. Coody, Vienna
State-at-Large

Marie W. Dodd, Atlanta
State-at-Large

Jesse Hill, Jr., Atlanta
State-at-Large

O. Torbitt Ivey, Jr., Augusta
State-at-Large

John E. Skandalakis, Atlanta
State-at-Large

Erwin A. Friedman, Savannah
First District

William T. Divine, Jr., Albany
Second District

John H. Robinson, III, Americus
Third District

Scott Candler, Jr., Decatur
Fourth District

Eldridge W. McMillan, Atlanta
Fifth District

Lamar R. Plunkett, Bowdon
Sixth District

Lloyd L. Summer, Jr., Rome
Seventh District

Thomas H. Frier, Sr., Douglas
Eighth District

Sidney O. Smith, Jr., Gainesville
Ninth District

Julius F. Bishop, Athens
Tenth District

OFFICERS AND STAFF

O. Torbitt Ivey, Jr. <i>Chairman*</i>	Howard Jordan, Jr. <i>Vice Chancellor Services</i>	Mary Ann Hickman <i>Assistant Vice Chancellor Academic Affairs</i>
Lloyd L. Summer, Jr. <i>Vice Chairman*</i>	Thomas F. McDonald <i>Vice Chancellor Student Services</i>	H. Guy Jenkins, Jr. <i>Assistant Vice Chancellor Facilities</i>
Vernon Crawford <i>Chancellor*</i>	Harry B. O'Rear <i>Vice Chancellor Health Affairs</i>	Thomas E. Mann <i>Assistant Vice Chancellor Facilities</i>
H. Dean Propst <i>Vice Chancellor*</i>	Haskin R. Pounds <i>Vice Chancellor Research & Planning</i>	Roger Mosshart <i>Assistant Vice Chancellor Fiscal Affairs - Budgets</i>
Henry G. Neal <i>Executive Secretary*</i>	Robert J. Cannon <i>Assistant Vice Chancellor Affirmative Action</i>	E. Beth Schwarzmüller <i>Assistant Vice Chancellor Research</i>
Shealy E. McCoy <i>Vice Chancellor Fiscal Affairs/Treasurer*</i>	James L. Carmon <i>Assistant Vice Chancellor Computing Systems</i>	Jacob H. Wamsley <i>Assistant Vice Chancellor Fiscal Affairs</i>
Frank C. Dunham <i>Vice Chancellor Facilities</i>	Wanda K. Cheek <i>Assistant Vice Chancellor Planning</i>	
W. Ray Cleere <i>Vice Chancellor Academic Affairs</i>	Gordon M. Funk <i>Assistant Vice Chancellor Fiscal Affairs-Accounting Systems and Procedures</i>	
Robert M. Joiner <i>Vice Chancellor Public Relations & Information Services</i>		

*Officers of the Board

SOURCE: WGC Undergraduate Catalog, 1982-83

WEST GEORGIA COLLEGE 1982/83

OFFICERS OF GENERAL ADMINISTRATION

Maurice K. Townsend
President

James E. Boyd
President Emeritus

Ward B. Pafford
President Emeritus

John T. Lewis, III
Vice President/Dean of Faculties

Kenneth C. Batchelor
Vice President for Business & Finance

Bruce W. Lyon
Dean of Student Services

Tracy P. Stallings
Director of College Relations

Richard A. Folk
Director of Instructional & Research Services

ADMINISTRATIVE STAFF OFFICERS

Charles E. Beard
Director of Libraries

Annie Belle Weaver
Director of Libraries Emeritus

C. Doyle Bickers
Director of Admissions

Joseph D. Doldan
Director of the Computer Center

Gordon E. Finnie
Registrar

Elizabeth Parker
Registrar Emeritus

Stephen C. McCutcheon
*Director of Continuing Education
and Public Services*

ACADEMIC OFFICERS

Benjamin W. Griffith
Dean of the Graduate School

Richard L. Dangle
Dean of the School of Arts & Sciences

J. Mark Miller
Dean of the School of Business

Evelyn R. Fulbright
Dean of the School of Education



SOURCE: WGC Undergraduate Catalog, 1982-83

**DEPARTMENTS OF INSTRUCTION &
CHAIRMEN**

Accounting & Finance
Paul D. Baker

Administrative Systems & Business
Education
Donald L. Crawford

Art
J. Bruce Bobick

Biology
Edward E. Gilbert

Chemistry
Lucille B. Garmon*

Counseling & Educational Psychology
Arthur L. Sanders

Developmental Studies & Testing
Charles E. Wilson

Early Childhood Education
Verl M. Short

Economics
Carl B. Housley

Educational Leadership
Gerard F. Lentini

English
James W. Mathews

Fine Arts
Robert M. Coe

Foreign Languages
Douglas R. Hilt

Geography
James R. O'Malley

Geology
C. Sumner Long

History
Albert S. Hanser

Marketing & Management
Frank R. Hunsicker

Math & Computer Science
Chatty R. Pittman

Media
Gerard F. Lentini

Middle Grades & Reading
George H. McNinch

Nursing
Jeanette C. Bernhardt

Philosophy
David J. Higgins

Physical Education & Recreation
Thomas W. Leaming

Physics
Herman W. Boyd

Political Science
Donald T. Wells

Psychology
Myron M. Arons

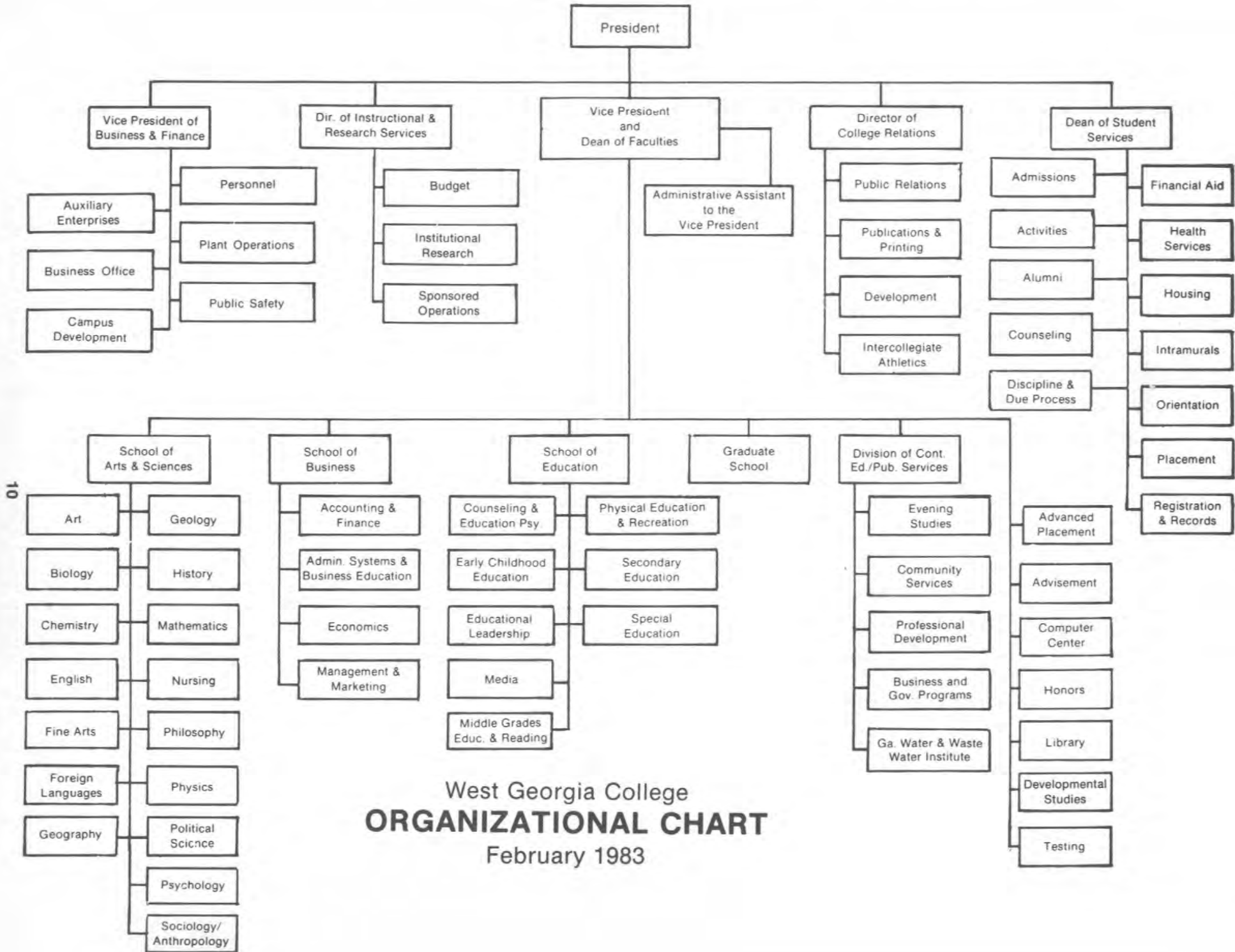
Secondary Education
Edna Earl Edwards

Sociology/Anthropology
William T. Simons

Special Education
William C. Moeny

*Acting Chairman

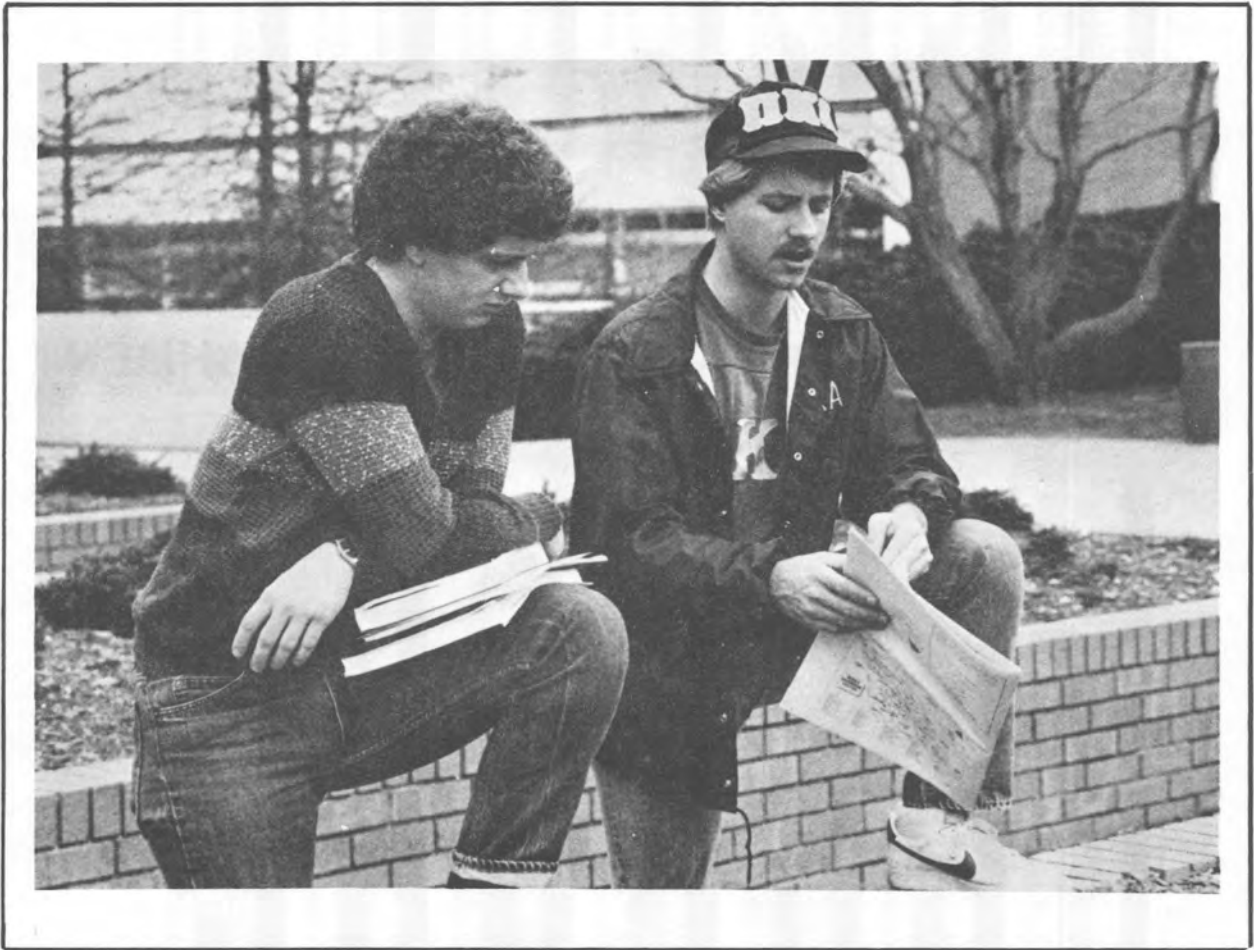
SOURCE: *WGC Undergraduate Catalog, 1982-83*



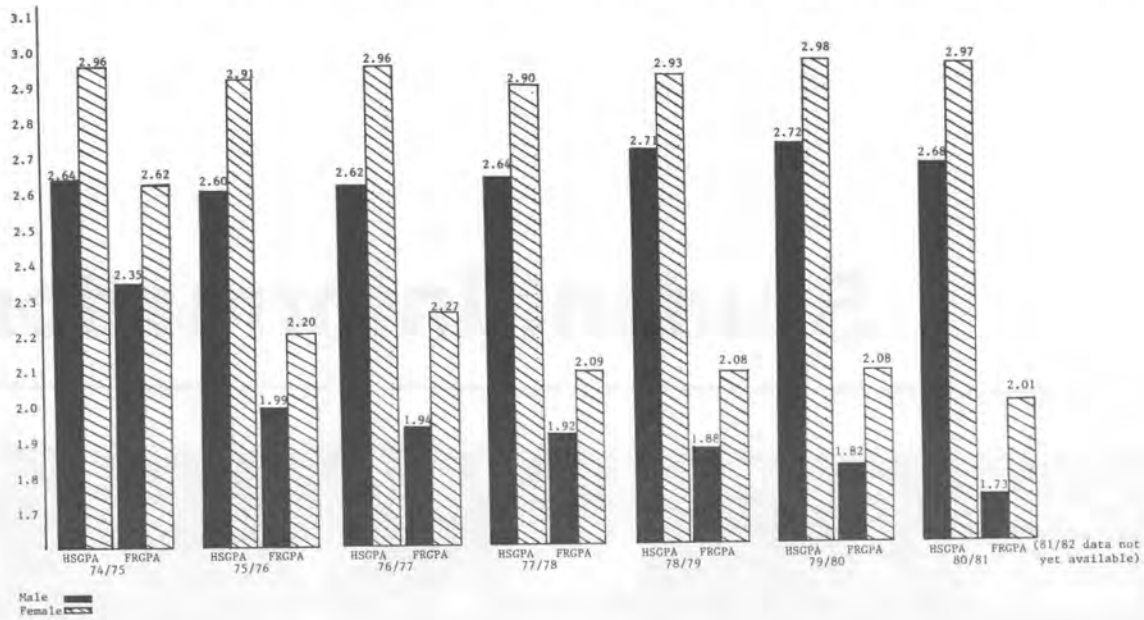
West Georgia College
ORGANIZATIONAL CHART
 February 1983

HIGH SCHOOL AND FRESHMAN GRADE POINT
AVERAGES OF ENTERING WOOD FRESHMEN

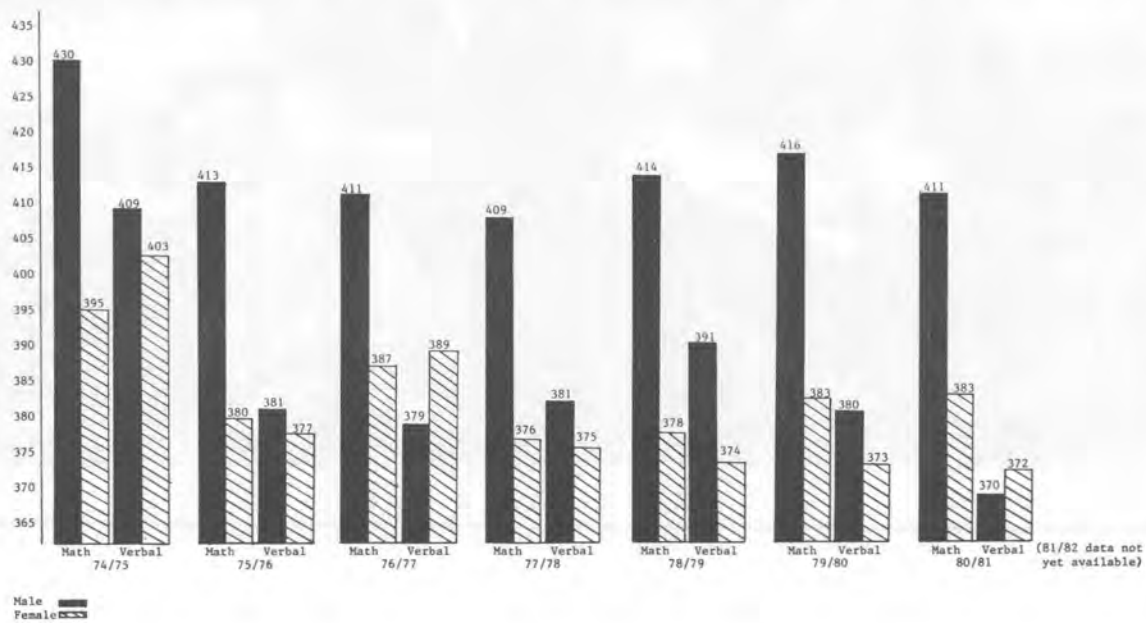
Student Information



HIGH SCHOOL AND FRESHMAN GRADE POINT AVERAGES OF ENTERING WGC FRESHMEN

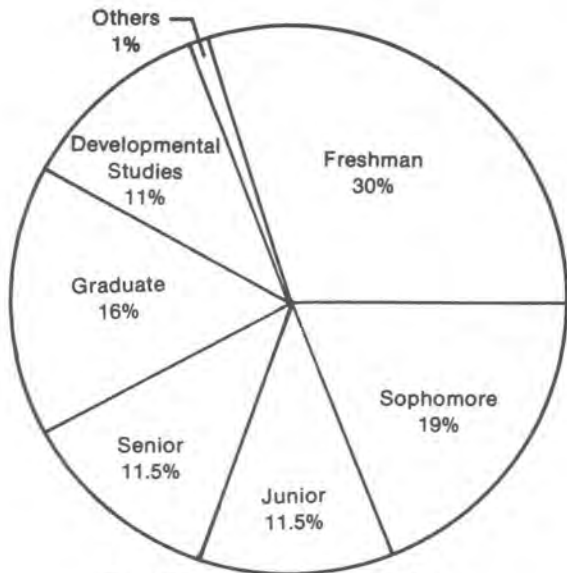


SAT SCORES FOR ENTERING WGC FRESHMEN

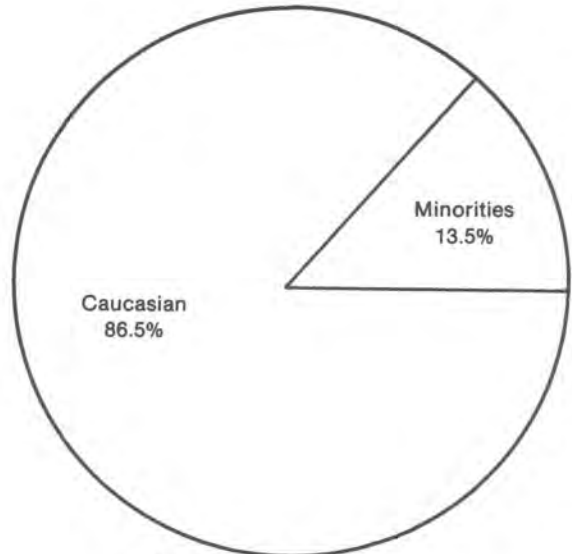


SOURCE: Regent's Normative Data for the Freshman Class

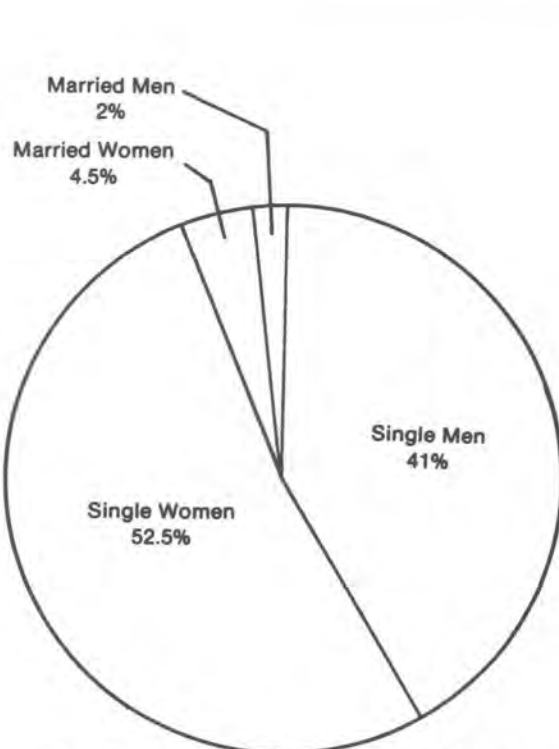
West Georgia College
COMPOSITION OF STUDENT BODY
 Fall 1982



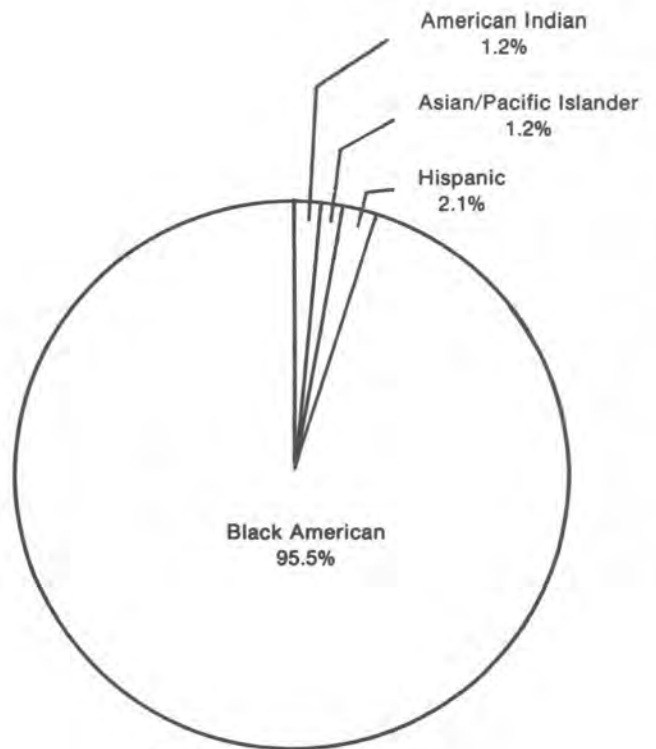
Enrollment by Classification



Enrollment by Race



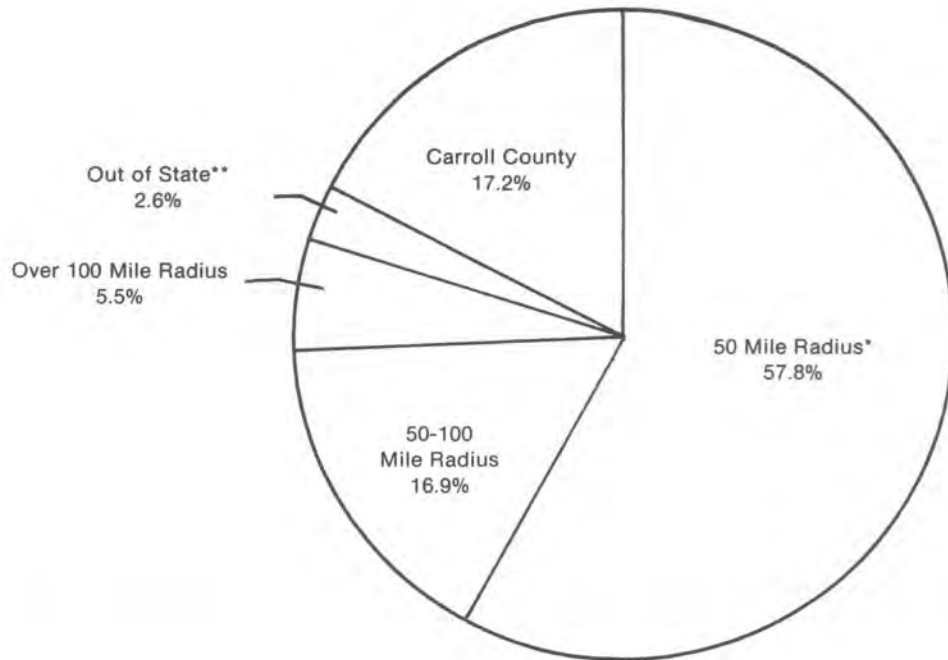
Enrollment by Sex and Marital Status



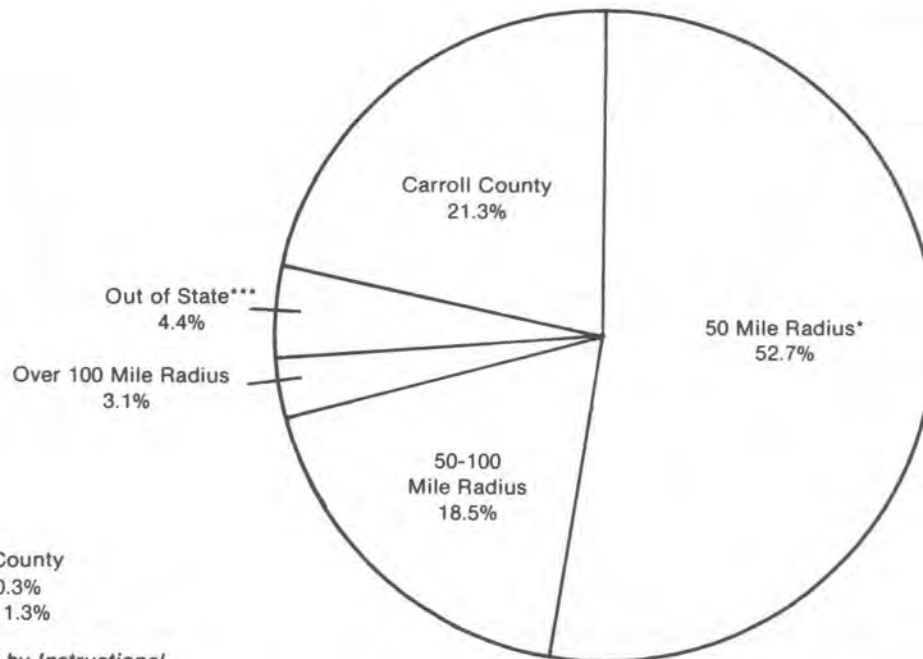
Minority Enrollment

SOURCE: Fall 1982 University System of Georgia Quarterly Enrollment Report.

West Georgia College
GEOGRAPHIC DISTRIBUTION OF STUDENT BODY
 Fall 1982



Undergraduate Students



Graduate Students

*Excluding Carroll County
 **Includes Foreign 0.3%
 ***Includes Foreign 1.3%

SOURCE: Compiled by Instructional and Research Services

West Georgia College

**ENROLLMENT FROM COUNTIES IN
PRIMARY SERVICE AREA AND
FROM 5-COUNTY METRO AREA**

Fall 1982

County	Enrollment	County	Enrollment
Bartow	76	Haralson	200
Butts	5	Harris	15
Carroll	1,092	Heard	43
Catoosa	21	Henry	28
Chattooga	31	Lamar	19
Cherokee	47	Meriweather	46
Clayton	152	Monroe	10
Cobb	591	Murray	17
Coweta	305	Muscogee	36
Dade	7	Newton	18
Dawson	2	Paulding	75
Dekalb	623	Pickens	5
Douglas	341	Pike	12
Fannin	9	Polk	104
Fayette	95	Rockdale	56
Floyd	143	Spalding	71
Forsyth	23	Talbot	7
Fulton	557	Troup	114
Gilmer	9	Upson	38
Gordon	45	Walker	56
Gwinnett	230	Whitfield	98
		Total	5,472

5-County Metro Area 2,153
(Clayton, Cobb, Dekalb, Fulton, Gwinnett)

SOURCE: Change of Status Proposal, 1982

DETAILED COMPOSITION OF WGC STUDENT BODY

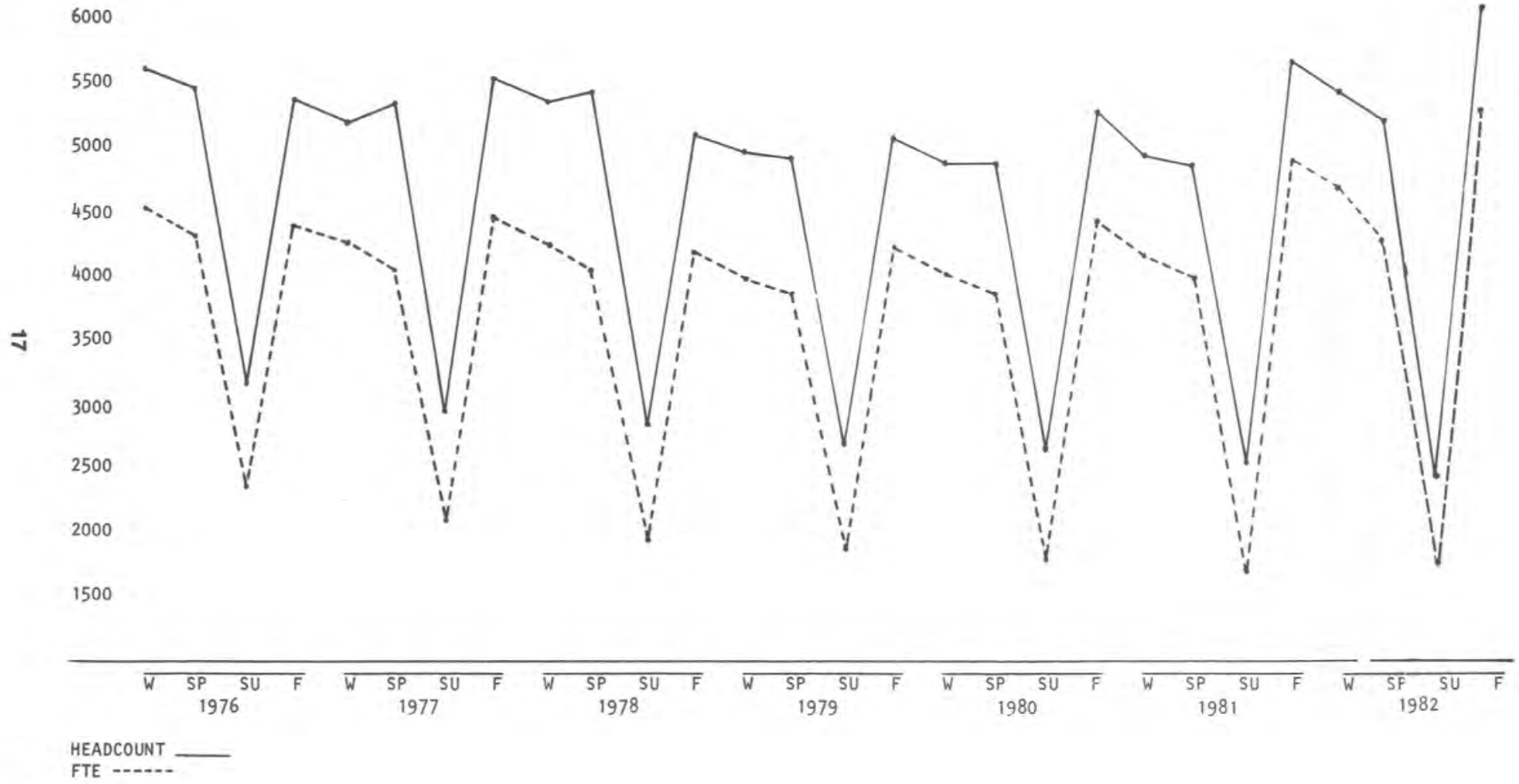
Fall Quarters 1976-1982

	Fall 1976	Fall 1977	Fall 1978	Fall 1979	Fall 1980	Fall 1981	Fall 1982	%Change 1976-1982
Total Enrollment	5,366	5,536	5,119	5,051	5,271	5,660	6,050	13.0
Classification								
Freshman	1,178	1,265	1,046	1,145	1,289	1,537	1,840	56.0
Sophomore	884	903	837	786	946	936	1,133	28.0
Junior	659	659	614	606	620	649	694	5.0
Senior	677	637	624	634	638	695	703	4.0
Graduate	1,520	1,606	1,400	1,243	1,143	1,054	968	(36.0)
Special Studies	308	335	502	575	566	713	639	107.0
Others	140	131	96	62	69	76	73	(48.0)
Geographic								
Georgia Residents	5,153	5,346	4,951	4,870	5,129	5,501	5,866	14.0
Out-of-State	185	165	144	151	126	135	160	(14.0)
Other Countries	28	25	24	30	16	24	24	(14.0)
Sex and Marital Status								
Single Men	1,899	2,009	1,802	1,752	1,962	2,228	2,490	31.0
Married Men	586	408	363	298	194	149	128	(78.0)
Single Women	1,990	2,491	2,362	2,449	2,740	2,974	3,170	59.0
Married Women	891	628	592	552	375	309	262	(71.0)
Racial Mix								
White Male	2,253	2,158	1,912	1,806	1,918	2,057	2,316	3.0
White Female	2,514	2,652	2,411	2,428	2,583	2,762	2,926	16.0
Black Male	221	254	246	236	225	307	285	29.0
Black Female	360	463	536	560	515	504	487	35.0
Other Male	11	5	7	8	13	13	17	55.0
Other Female	7	4	7	13	17	17	19	171.0
New Students								
Total	1,629	1,865	1,699	1,667	1,894	2,154	2,245	38.0
Beginning Freshman	576	652	496	594	745	931	1,160	101.0
Transfers	380	397	361	362	403	390	397	4.0
Graduate Students	444	525	411	295	285	266	220	(50.0)
Special Studies	229	291	431	416	461	567	468	104.0
*Attendance Status								
Full-time	2,974	3,022	2,845	3,029	3,265	3,641	4,061	36.6
Part-time	2,047	2,527	2,288	2,015	2,014	2,046	2,023	(16.0)

*Full-time is defined as 15 QCH per quarter.

SOURCE: University System of Georgia Quarterly Enrollment Report, Attendance Status Compiled by Instructional and Research Services/Ingle

FREQUENCY CHART WGC ENROLLMENT & FULL TIME EQUIVALENTS



SOURCE: University System of Georgia Quarterly Enrollment Report

TABLE OF WGC ENROLLMENT & FULL TIME EQUIVALENTS WITH PERCENT OF ANNUAL CHANGE

1976-1982

Year	Headcount	% +(-)	FTE*	% +(-)
1976				
Winter	5,581		4,518	
Spring	5,482		4,297	
Summer	3,177		2,357	
Fall	5,366		4,374	
1977				
Winter	5,203	(6.8)	4,259	(5.7)
Spring	5,293	(3.4)	4,080	(5.1)
Summer	2,972	(6.5)	2,115	(10.3)
Fall	5,536	3.2	4,477	2.4
1978				
Winter	5,339	2.6	4,254	(0.1)
Spring	5,440	2.8	4,080	--
Summer	2,810	(5.5)	1,951	(7.8)
Fall	5,119	(7.5)	4,172	(6.8)
1979				
Winter	4,970	(6.9)	3,987	(6.3)
Spring	4,896	(10.0)	3,847	(5.7)
Summer	2,696	(4.1)	1,857	(4.8)
Fall	5,051	(1.3)	4,229	1.4
1980				
Winter	4,817	(3.1)	4,031	1.1
Spring	4,815	(1.7)	3,864	0.4
Summer	2,638	(2.2)	1,792	(3.5)
Fall	5,271	4.4	4,431	4.8
1981				
Winter	4,917	2.1	4,152	3.0
Spring	4,882	1.4	3,992	3.3
Summer	2,546	(3.5)	1,694	(5.5)
Fall	5,660	7.4	4,884	10.2
1982				
Winter	5,390	9.6	4,632	11.6
Spring	5,207	6.7	4,338	8.7
Summer	2,474	(2.9)	1,728	2.0
Fall	6,050	6.9	5,299	8.5

*Based on 15 QCH as full load for each student upon census date of quarterly enrollment report.

SOURCE: University System of Georgia Quarterly
Enrollment Report

West Georgia College
ADMISSIONS DATA: "NEW STUDENT" HISTORY
 Fall Quarters 1976-1982

	1976	1977	1978	1979	1980	1981	1982	% Change 1976-1982
Total New Undergraduate Applicants	1858	2010	2107	2321	2623	3443	3975	113.9
Total New Undergraduate Students Enrolled	1185	1340	1288	1372	1609	1888	2025	70.9
Total New Transfer Applicants	471	481	471	508	652	683	755	60.3
Total New Transfer Students Enrolled	286	310	294	318	353	332	347	21.3
Total New Freshmen Applicants	1285	1424	1558	1758	1951	2690	3163	146.1
Total New Freshmen Students Enrolled*	805	943	927	1010	1206	1498	1628	102.2
Total New Developmental Studies Students Enrolled	229	291	431	416	461	567	468	104.4

*Figures include Developmental Studies freshmen and new transfer students required to take Developmental Studies courses.
 SOURCE: Admissions Office

**HISTORY OF CONTINUING EDUCATION
 PROGRAMS FOR FISCAL YEARS 1976-1982**

Year	Programs	Participants	CEUs
1975-76	140	4604	5128
1976-77	158	4643	6840
1977-78	220	4448	5952
1978-79	242	4382	5866
1979-80	215	3799	7351
1980-81	282	5031	7297
1981-82	288	8873	6447

*Summary combines Category I programs (occupational related) and Category II programs (personal/social/cultural/recreational activities).

SOURCE: Continuing Education Division

West Georgia College
**RETENTION RATES OF
 FALL QUARTER FRESHMAN CLASSES**
 1974-1981

Quarters Following Freshman Fall	Percent of Fall 1974 Class	Percent of Fall 1975 Class	Percent of Fall 1976 Class	Percent of Fall 1977 Class	Percent of Fall 1978 Class	Percent of Fall 1979 Class	Percent of Fall 1980 Class	Percent of Fall 1981 Class
1	85.11	84.75	86.90	87.03	85.98	88.51	82.52	86.73
2	77.76	79.34	78.07	76.41	77.32	80.64	74.53	77.24
3	20.08	17.38	15.42	13.20	14.09	15.29	15.61	10.55
4	60.41	59.84	58.82	51.88	57.09	53.05	51.00	
5	55.04	55.59	52.14	47.03	50.31	45.18	43.88	
6	50.33	50.98	47.33	42.81	47.72	42.36	40.45	
7	15.83	19.06	13.81	13.75	16.77	13.28	13.17	
8	40.34	38.92	36.45	32.11	37.72	35.76		
9	37.13	35.99	32.98	30.00	34.09	33.01		
10	34.40	32.80	30.12	29.38	32.36	31.01		
11	15.46	15.96	15.33	13.98	15.59	14.17		
12	29.22	26.06	25.40	25.39	27.95			
13	27.14	24.38	23.53	22.50	26.54			
14	25.07	22.16	22.37	21.41	24.33			
15	11.69	11.52	10.78	11.41	11.50			
16	15.36	13.03	13.37	13.36				
17	12.82	10.19	10.07	10.70				
18	11.03	9.04	9.36	10.31				
19	7.16	4.78	5.88	5.78				

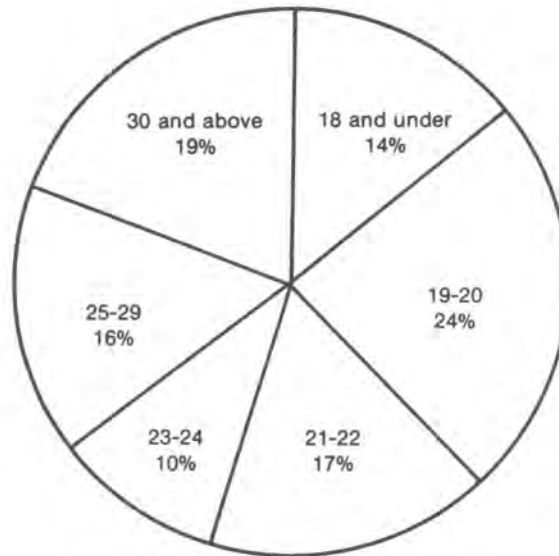
NOTE: Each number in the table represents the percentage of a Fall Quarter Freshman class returning in subsequent quarters.

EXAMPLE: For the Fall Quarter Freshman Class of 1980, the retention rate one year later in the Fall Quarter of 1981 (the fourth quarter following Fall Quarter 1980) is 51.00%.

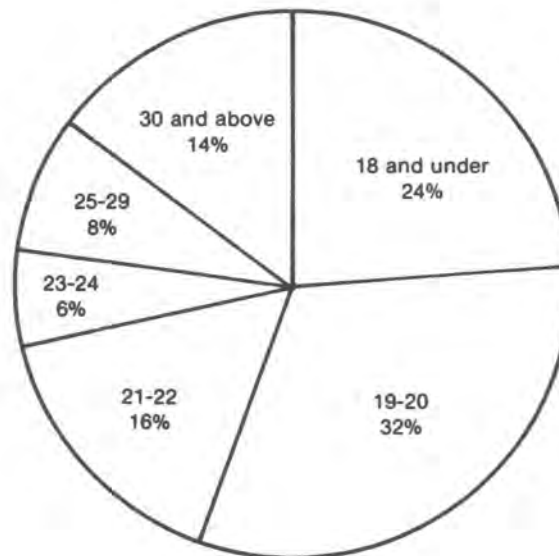
SOURCE: Compiled by Instructional and Research Services/Ingle

AGE DISTRIBUTION OF WGC STUDENTS

Fall 1976 - Fall 1982



Fall 1976



Fall 1982

Note: For further detail refer to table on page 22.

SOURCE: Compiled by Instructional and Research Services/Lamb

HISTORY OF CHANGES IN AGES OF WGC STUDENTS

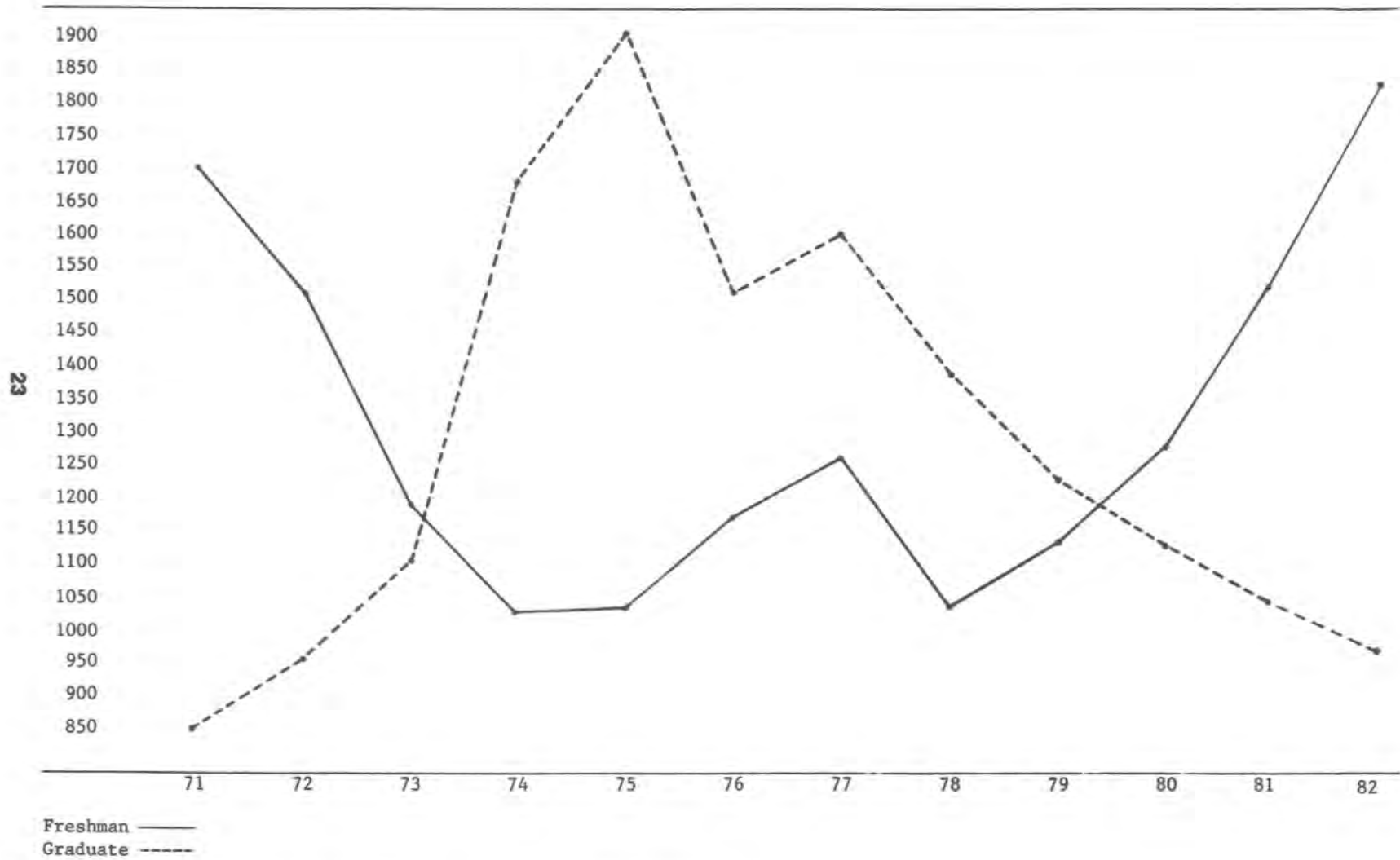
Fall 1976 - Fall 1982

Age	Fall 76	% Change From Previous Year	Fall 77	% Change From Previous Year	Fall 78	% Change From Previous Year	Fall 79	% Change From Previous Year	Fall 80	% Change From Previous Year	Fall 81	% Change From Previous Year	Fall 82	% Change From Previous Year
17-18	766	(4.7)	860	12.3	881	2.4	935	6.1	1,037	10.9	1,323	27.6	1,442	9.0
% Qtr. Total		14.3		15.5		17.2		18.6		19.7		23.4		23.8
19-20	1,306	5.1	1,343	2.8	1,232	(8.3)	1,326	7.6	1,475	11.2	1,631	10.6	1,909	17.0
% Qtr. Total		24.3		24.3		24.0		26.4		28.0		28.9		31.6
21-22	896	(11.5)	879	(1.9)	870	(1.0)	840	(3.4)	861	2.5	865	0.5	967	11.8
% Qtr. Total		16.7		15.9		17.0		16.7		16.4		15.3		16.0
23-24	539	(6.9)	523	(3.0)	413	(21.0)	423	2.4	412	(2.6)	373	(9.5)	365	(2.1)
% Qtr. Total		10.0		9.4		8.0		8.4		7.8		6.6		6.0
25-29	873	(13.8)	838	(4.0)	709	(15.4)	618	(12.8)	560	(9.4)	546	(2.5)	501	(8.2)
% Qtr. Total		16.3		15.1		13.8		12.3		10.6		9.7		8.3
30-34	445	(10.5)	522	17.3	483	(7.5)	423	(12.4)	402	(5.0)	398	(1.0)	345	(13.3)
% Qtr. Total		8.3		9.4		9.4		8.4		7.6		7.0		5.7
35-39	236	(5.2)	259	9.7	261	0.8	204	(21.8)	253	24.0	251	(0.8)	262	4.4
% Qtr. Total		4.4		4.7		5.1		4.0		4.8		4.4		4.3
40-44	141	(21.7)	148	5.0	139	(6.1)	117	(15.8)	122	4.3	134	9.8	138	3.0
% Qtr. Total		2.6		2.7		2.7		2.3		2.3		2.4		2.3
45-49	97	(11.0)	86	(11.3)	82	(4.7)	81	(1.2)	74	(8.6)	79	6.8	67	(15.2)
% Qtr. Total		1.8		1.6		1.6		1.6		1.4		1.4		1.1
50-59	64	(23.8)	73	14.1	53	(27.4)	54	1.9	55	1.9	43	(21.8)	49	14.0
% Qtr. Total		1.2		1.3		1.0		1.1		1.1		0.8		0.8
60 & above	4	(63.6)	4	0.0	9	125.0	11	22.2	14	27.3	7	(50.0)	8	14.3
% Qtr. Total		0.1		0.1		0.2		0.2		0.3		0.1		0.1
Average Age of Student Body		24.5		24.5		24.4		23.9		23.7		23.2		22.8

SOURCE: Compiled by Instructional and Research Services

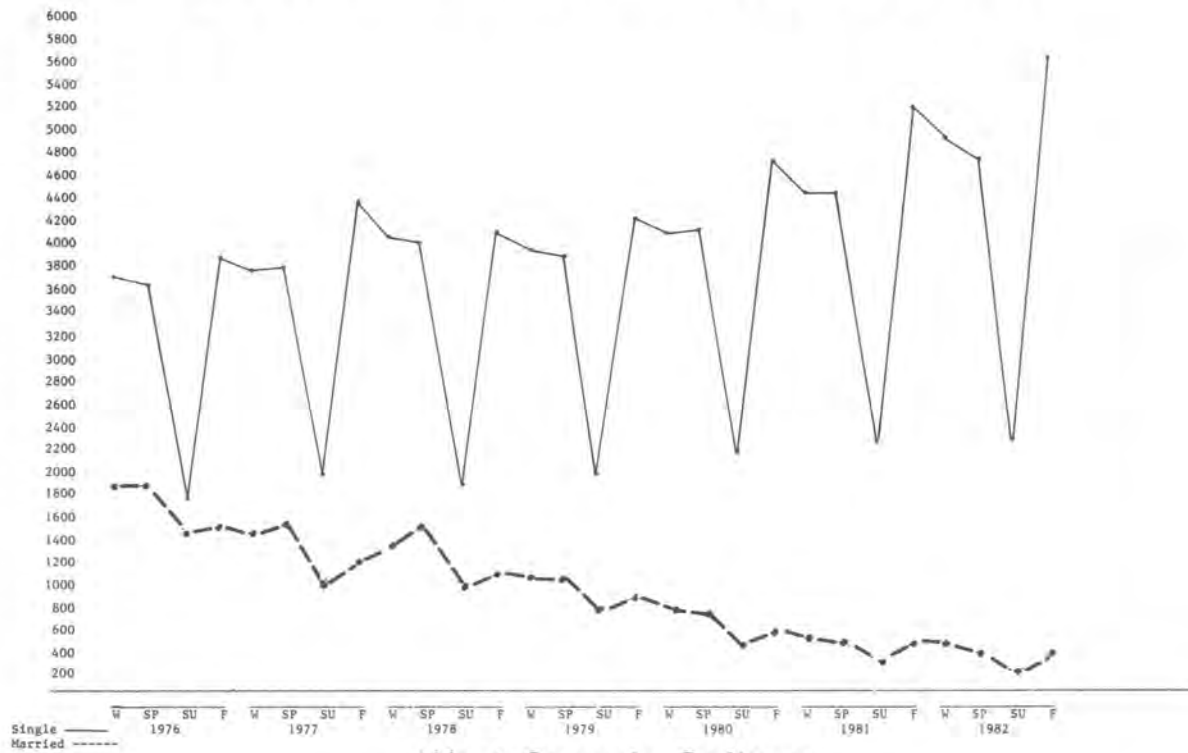
FREQUENCY CHART WGC FRESHMAN & GRADUATE ENROLLMENT

Fall Quarters 1971—1982

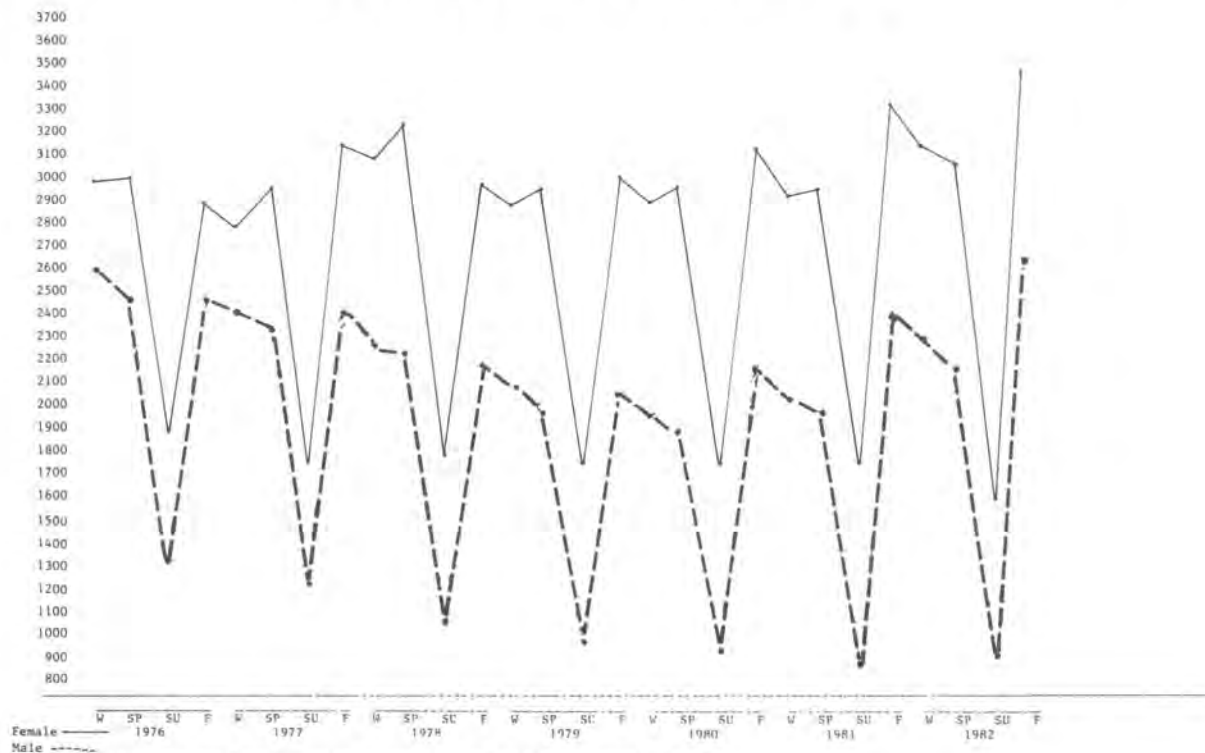


SOURCE: University System of Georgia Quarterly Enrollment Report

West Georgia College ENROLLMENT BY MARITAL STATUS



West Georgia College ENROLLMENT BY SEX



SOURCE: University System of Georgia Quarterly Enrollment Report

WGC UNDERGRADUATE ACADEMIC PROFILE BY DEGREE

Fall 1982

Degree Category	# Majors	% Men/Women	\bar{X} Age	\bar{X} Entrance Exam Scores SAT Verbal	SAT Math	\bar{X} High School Grade	\bar{X} College Grades
AS	389	31/69	22	402	420	3.04	2.33
AB	780	42/58	21	428	435	2.99	2.50
BBA	1022	55/45	21	394	429	2.99	2.31
BM	53	51/49	22	421	417	2.93	2.46
BS	466	60/40	21	414	435	2.99	2.39
BS-Earth Sci.	4	75/25	21	433	376	2.90	2.66
BS-Ed.	578	31/69	21	391	406	2.99	2.49
BS-Rec.	48	54/46	22	362	384	2.89	2.44
Non-Degree	90	63/37	20	421	463	3.06	2.40
Undecided	1661	47/53	19	358	385	2.79	2.08

WGC GRADUATE ACADEMIC PROFILE BY DEGREE

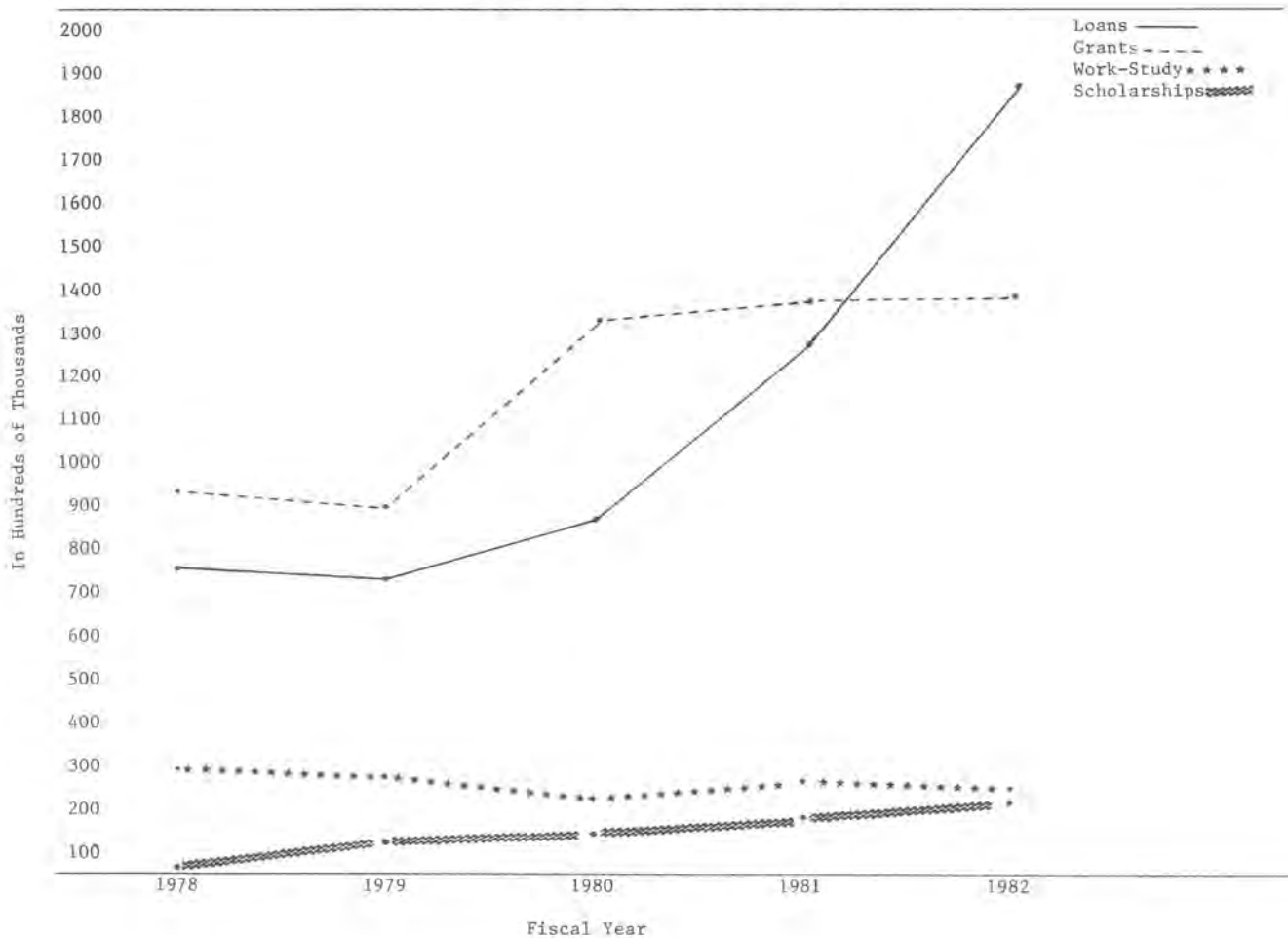
Fall 1982

Degree Category	# Majors	% Men/Women	\bar{X} Age	\bar{X} Entrance Exam Scores		\bar{X} High School Grade	\bar{X} College Grades
MA	97	45/55	29	GRE Verb	560	3.02	3.72
				GRE Quan	495		
				MAT	58		
MBA	36	81/19	28	GMAT	491	2.88	3.30
MED	399	14/86	31	NTE Com	578	2.91	3.70
				NTE Opt	626		
MM	8	50/50	31	NTE Com	679	3.05	3.62
				NTE Opt	670		
MPA	26	69/31	34	GRE Verb	456	2.66	3.32
				GRE Quan	451		
				MAT	48		
MS	3	67/33	31	GRE Verb	483	2.93	3.71
				GRE Quan	470		
EDS	155	28/72	37	NTE Com	630	3.69	3.85
				NTE Opt	678		
Non-Degree	268	25/75	34	NTE Com	571	3.10	3.57
				NTE Opt	611		

Note: \bar{X} = Average

SOURCE: Compiled by Instructional and Research Services/Ingle

West Georgia College STUDENT FINANCIAL AID Fiscal Years 1978 - 1982



Fiscal Year	Loans	Scholarships	Grants	College Work-Study	Total
1978	\$ 756,627	\$ 59,549	\$ 927,983	\$297,714	\$2,041,873
1979	724,970	121,965	896,403	283,509	2,026,847
1980	859,482	135,055	1,326,219	218,877	2,539,633
1981	1,271,226	181,343	1,362,647	266,671	3,081,887
1982	1,860,902	203,713	1,381,560	223,766	3,669,941

Number of Students Served

1978	739	159	1146	424	2468
1979	721	205	1031	394	2351
1980	870	316	1229	367	2782
1981	1171	281	1305	384	3141
1982	1362	313	1416	336	3427

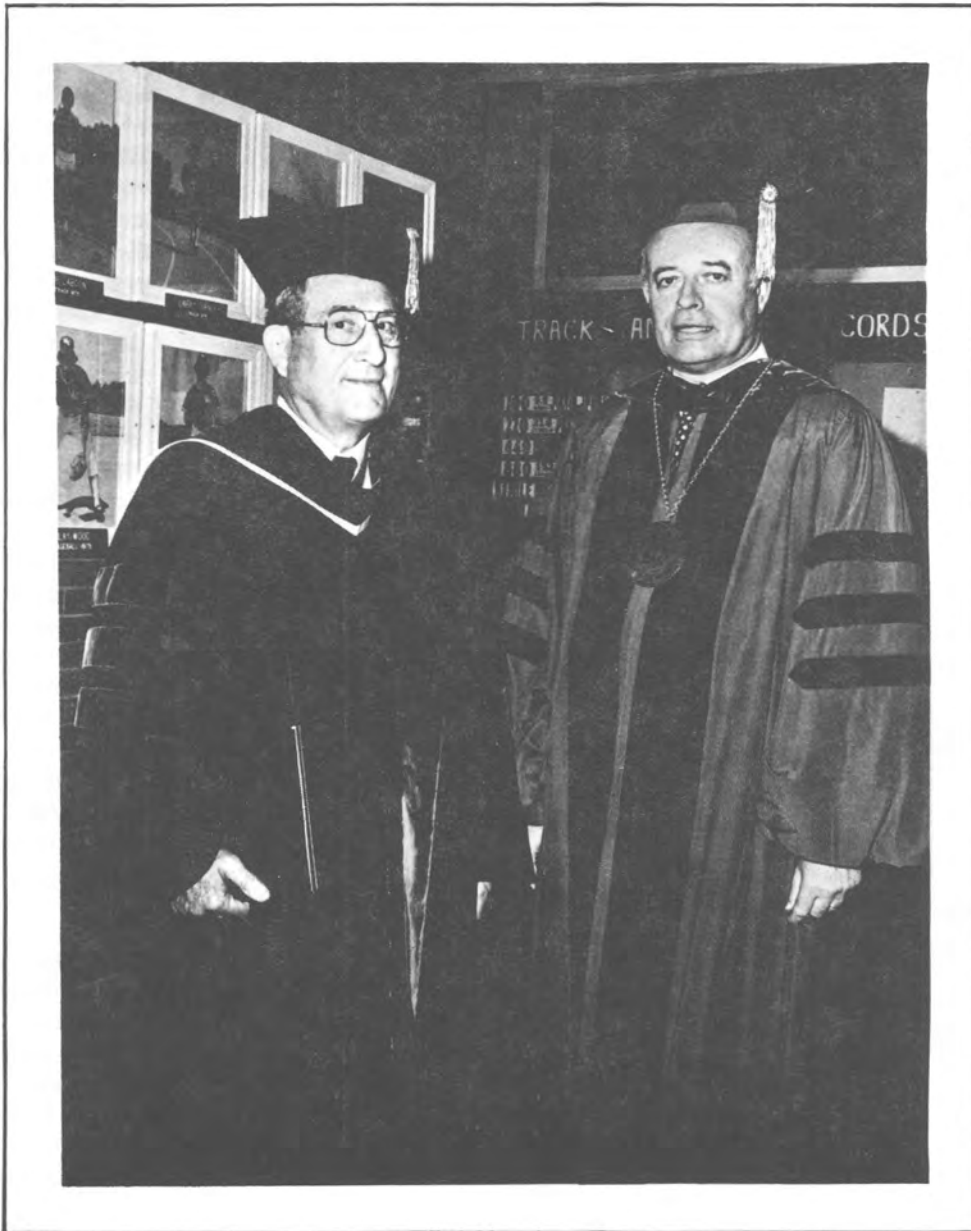
SOURCE: Financial Aid Office/Ferling

West Georgia College STUDENT FINANCIAL AID

	1980-1981		1981-1982	
	No. of Students	Amount	No. of Students	Amount
Loans				
NDSL	467	\$ 279,140	387	\$ 231,590
Federally Insured	54	98,065	74	157,219
State Guaranteed	555	843,390	733	1,415,229
WGC Emergency Loan	169	26,770	214	40,444
Regents Scholarship	21	8,200	16	9,220
Nursing Loan	1	900	1	300
Private Loan	7	10,565	4	6,900
Law Enforcement	7	4,196	0	0
	1281	\$1,271,226	1429	\$1,860,902
Scholarships				
Institutional	112	\$ 75,647	127	\$ 85,977
Private	108	62,762	101	64,684
All Others	81	42,934	119	53,052
	301	\$ 181,343	347	\$ 203,713
Grants				
B.E.O.G.	1250	\$1,104,404	1340	\$1,133,999
SEOG	301	135,574	298	119,795
Vocational Rehabilitation	17	7,666	5	4,218
Ga. Incentive Scholarship	405	102,775	547	121,100
Nursing Scholarship	1	600	1	450
All Others	12	11,628	1	1,998
	1986	\$1,362,647	2192	\$1,381,560
College Work Study	384	\$ 266,671	336	\$ 223,766
Total	3952	\$3,081,887	4304	\$3,669,941

SOURCE: Financial Aid Office/Ferling

Degree Information



West Georgia College
**DEGREES AND MAJORS AUTHORIZED BY
 THE BOARD OF REGENTS**

Fall 1982

Associate of Arts

Education

Associate of Science

Computer Science
 Criminal Justice
 Nursing
 Office Administration

Bachelor of Arts

Anthropology
 Art
 Art Education
 Studio Art
 Biology
 Chemistry
 English
 French
 Geography
 Geology
 German
 History
 Mass Communications
 Mathematics
 Philosophy
 Physics
 Political Science
 Psychology
 Sociology
 Spanish
 Speech and Theatre Art

**Bachelor of Business
 Administration**

Accounting
 Business Information
 Systems
 Economics
 Finance
 Management
 Marketing
 Office Administration

Bachelor of Music

Music Education
 Performance
 Theory & Composition

Bachelor of Science

Biology
 Chemistry
 Computer Science
 Criminal Justice
 Economics
 Geography
 Geology
 Mathematics
 Physics
 Political Science
 Sociology

**Bachelor of Science
 in Earth Science**

**Bachelor of Science
 in Education**

Business Education
 Early Childhood Education
 Middle Grades Education
 Physical Education
 Secondary Education
 Social Science
 Special Education
 Speech Pathology

**Bachelor of Science
 in Recreation**

Master of Arts

English
 History
 Psychology
 Sociology

**Master of Business
 Administration**

Master of Music

Music Education
 Performance

**Master of Public
 Administration**

Master of Education

Administrative &
 Supervision
 Art Education
 Business Education
 Early Childhood Education
 Guidance and Counseling
 Middle Grades Education
 Media
 Physical Education
 Reading Instruction
 Secondary Education
 Biology
 English
 French
 Mathematics
 Science
 Social Studies
 Spanish
 Special Education
 Behavior Disordered
 Educable Mentally
 Retarded
 Interrelated
 Specific Learning
 Disabled
 Trainable Mentally
 Retarded
 Speech Pathology

Master of Science

Biology

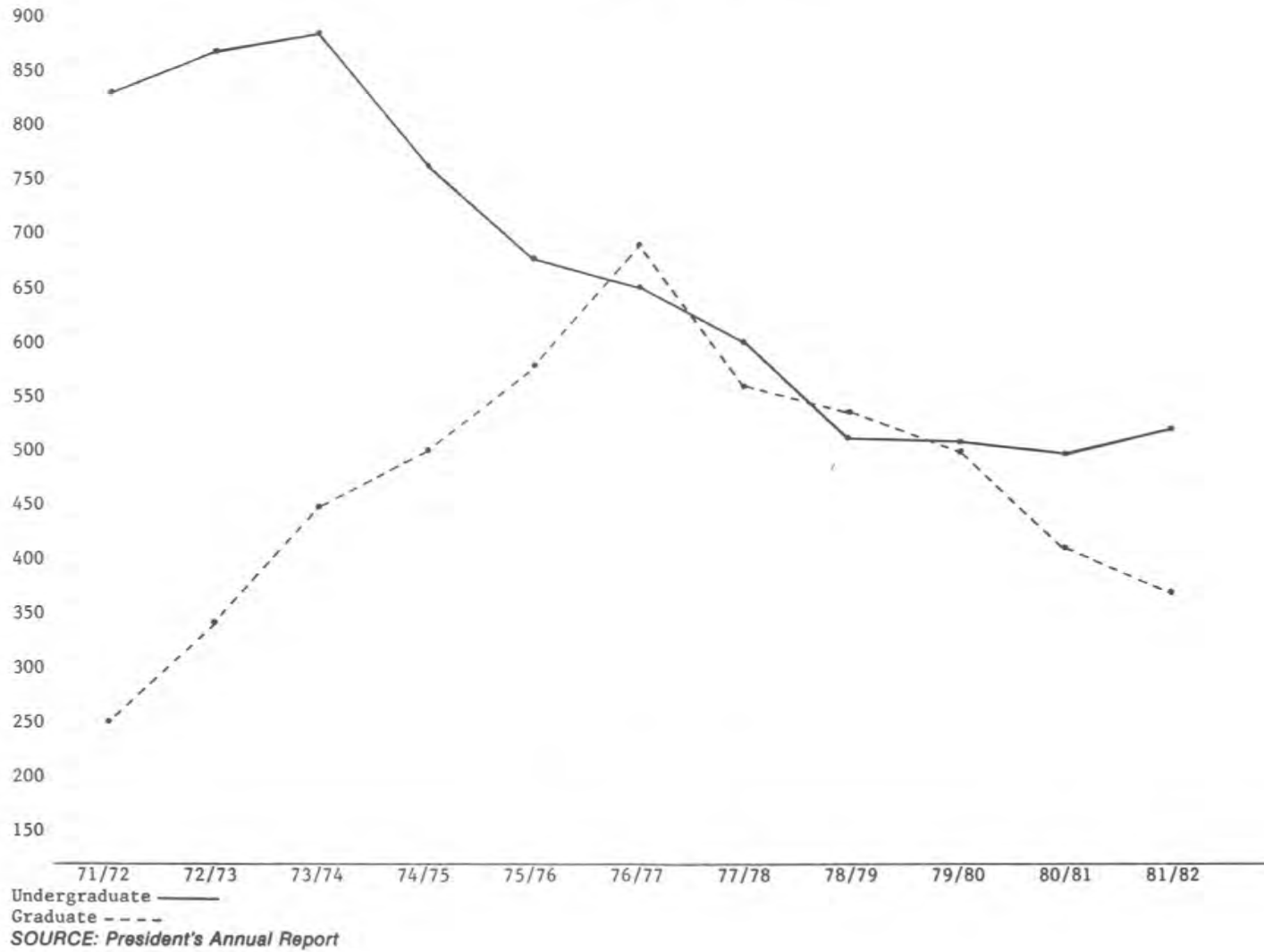
Specialist in Education

Administration &
 Supervision
 Business Education
 Early Childhood Education
 Guidance & Counseling
 Middle Grades Education
 Secondary Education
 English
 Math
 Science
 Social Studies
 Special Education

SOURCE: WGC Undergraduate Catalog, 1982-83

West Georgia College
UNDERGRADUATE AND GRADUATE DEGREES CONFERRED
1971/72 to 1981/82

30



WEST GEORGIA COLLEGE

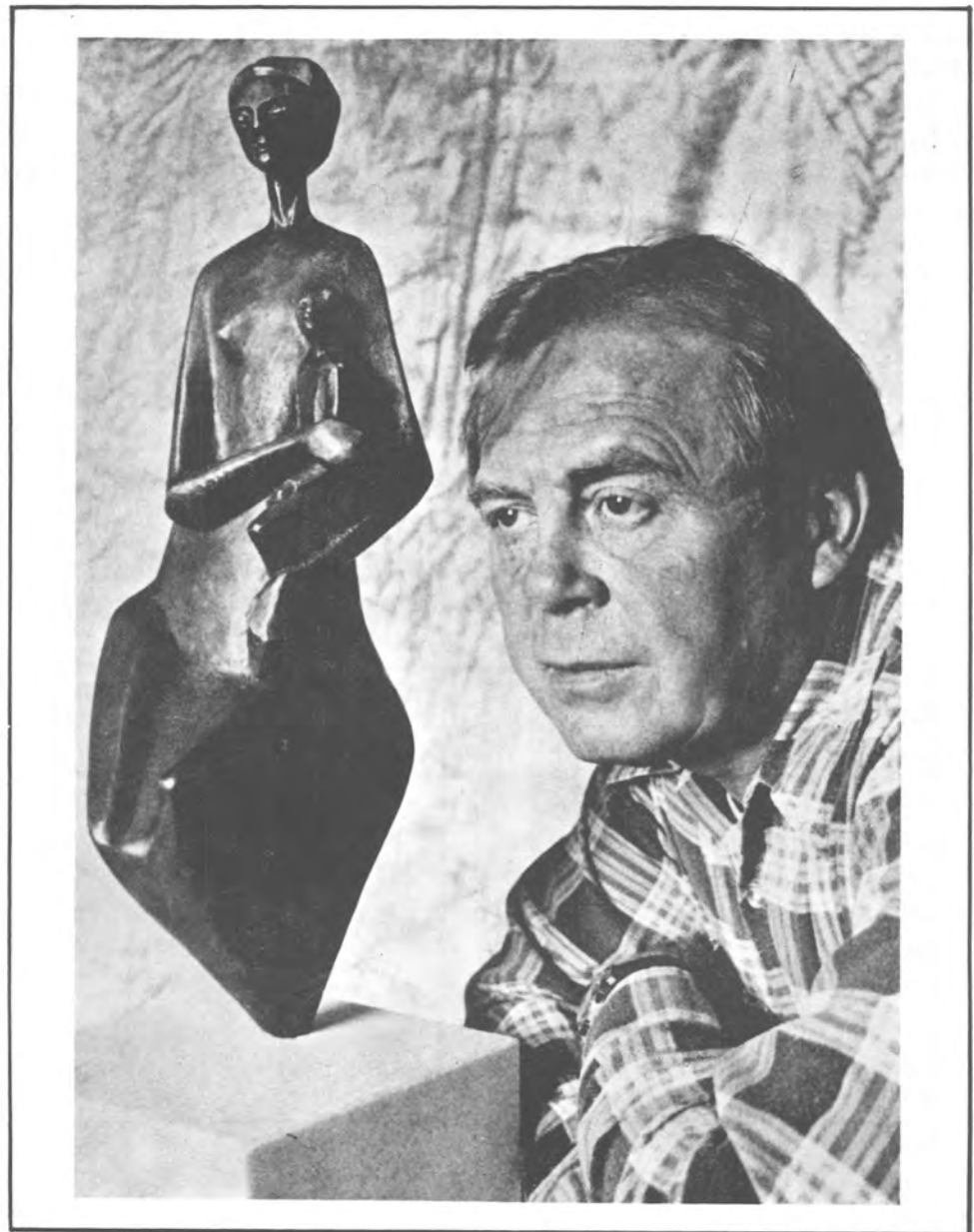
DEGREES CONFERRED BY PROGRAM AND LEVEL

	74/75	75/76	76/77	77/78	78/79	79/80	80/81	81/82
Associate of Arts:								
Education	-	-	-	-	-	-	2	2
Associate of Science:								
Accounting Technology	-	-	-	2	3	1	-	2
Computer Science	1	3	7	6	5	5	13	14
Criminal Justice	9	11	4	17	5	4	5	1
Marketing	-	-	-	-	6	3	2	3
Nursing	-	26	28	24	26	23	22	24
Office Administration	-	-	4	9	12	5	6	5
Total	10	40	43	58	57	41	48	49
Bachelor of Arts:								
Anthropology	3	6	4	1	1	4	1	0
Art	30	26	13	15	12	8	8	12
Biology	26	30	26	12	5	14	12	5
Chemistry	4	2	3	8	4	-	3	2
Economics	6	-	2	2	1	1	-	1
English	27	25	21	16	12	10	13	13
French	2	4	-	1	1	-	2	1
Geography	2	1	2	2	5	7	2	2
Geology	8	11	10	9	5	10	7	2
German	1	-	1	-	-	1	-	-
History	43	41	23	22	20	16	16	10
Latin American Studies	1	-	-	-	-	-	-	-
Mathematics	16	4	8	8	7	3	3	1
Philosophy	2	2	-	2	6	-	1	1
Physical Science	-	1	-	1	1	-	-	-
Physics	2	2	1	2	-	-	-	-
Political Science	17	11	12	14	1	9	7	10
Psychology	52	52	41	37	29	29	34	29
Sociology	44	28	25	18	6	13	9	6
Spanish	7	4	2	1	4	3	1	1
Speech and Theatre Art	6	10	7	3	13	14	15	16
Total	299	260	201	174	133	142	134	112
Bachelor of Business Administration:								
Accounting	38	48	45	53	41	40	33	29
Accounting and Finance	5	1	2	-	-	-	-	-
Economics	7	12	15	6	5	2	5	9
Finance	1	4	7	2	6	5	5	14
Management	22	34	35	46	52	55	53	48
Marketing	7	12	15	28	24	24	40	35
Office Administration	18	8	12	14	14	12	7	17
Business Administration	33	10	3	2	-	-	-	-
Marketing and Management	35	18	6	4	-	-	-	-
Total	166	147	140	155	142	138	143	152
Bachelor of Science In Education:								
Business Education	16	7	7	9	7	1	5	9
Early Childhood Education	70	50	44	39	33	40	41	45
Elementary Education	57	39	52	36	42	34	-	-
Junior High Education	12	5	6	3	4	-	-	-
Middle Grades Education	17	16	20	18	12	14	6	20
Physical Education	17	16	20	18	12	14	6	21
Secondary Social Science Education	-	-	-	-	-	-	-	2
Special Education	48	40	32	17	14	17	17	25
Total	220	157	161	122	112	106	94	122
Bachelor of Music:								
Music Education	-	-	-	-	-	4	3	4
Performance	8	8	10	15	4	4	-	1
Theory and Composition	-	-	-	-	-	1	-	1
Total	8	8	10	15	4	9	3	6

DETAILED HISTORY OF DEGREES *Continued*

	74/75	75/76	76/77	77/78	78/79	79/80	80/81	81/82
Bachelor of Science:								
Biology	-	-	-	-	-	-	5	7
Chemistry	3	1	2	1	-	-	-	4
Criminal Justice	-	-	-	-	3	15	14	16
Geography	14	13	16	13	2	6	7	7
Geology	-	-	-	-	-	3	4	13
Mathematics	-	-	-	-	-	-	2	2
Physics	2	2	2	3	3	-	2	4
Political Science	5	8	6	6	8	10	5	6
Political Science (Pre-Law)	-	-	-	2	6	-	-	-
Sociology	31	42	44	37	31	22	11	15
Total	55	66	70	62	53	56	50	74
Bachelor of Science in Earth Science:	3	2	1	3	1	1	-	-
Bachelor of Science in Medical Technology:	2	2	1	-	-	-	-	-
Bachelor of Science in Recreation:	29	20	21	15	8	16	17	13
Master of Arts:								
English	3	8	8	8	5	2	4	2
History	7	3	11	3	4	2	2	5
Mathematics	4	3	2	2	-	1	-	-
Psychology	72	79	100	112	84	92	45	25
Sociology	7	9	5	3	3	2	2	3
Total	93	102	126	128	96	99	53	35
Master of Business Administration:	9	5	15	15	13	17	8	15
Master of Education:								
Administration and Supervision	45	36	33	39	30	16	12	14
Business Education	11	11	19	10	10	6	7	4
Early Childhood Education	49	52	60	52	62	81	68	57
Elementary Education	86	127	146	102	88	67	-	-
Guidance and Counseling	35	43	53	57	32	28	31	21
Junior High Education	4	5	5	2	2	-	1	-
Middle Grades Education	-	-	-	-	-	-	50	52
Media	4	16	15	16	24	12	12	7
Physical Education	-	-	4	2	21	15	17	11
Reading Instruction	8	10	17	7	7	9	5	3
Secondary Education	66	68	64	50	42	50	35	28
Special Education	32	52	65	49	55	30	38	40
Total	340	420	481	386	373	314	276	237
Master of Music:								
Music Education	-	-	-	-	-	3	-	2
Performance	-	-	-	-	-	2	5	2
Total	-	-	-	-	-	5	5	4
Master of Science:								
Biology	8	4	1	2	5	3	2	3
Physics	-	1	-	-	-	-	-	-
Total	8	5	1	2	5	3	2	3
Specialist in Education:								
Administration and Supervision	8	8	17	13	10	16	20	12
Business Education	-	2	1	1	-	4	5	12
Early Childhood Education	1	3	2	2	3	8	5	11
Elementary Education	16	7	18	7	15	18	-	-
Guidance and Counseling	6	16	13	6	12	12	18	24
Middle Grades Education	-	-	-	-	-	-	9	8
Secondary Education	8	6	9	1	6	5	13	1
Special Education	-	-	-	-	-	-	-	6
Total	39	42	60	30	46	63	70	74
Total Number of Degrees By Level								
Education Specialist	39	42	60	30	46	63	70	74
Masters	450	532	623	531	487	438	344	295
Bachelor	782	662	605	546	453	468	441	479
Associate	10	40	43	58	57	41	50	51
Total	1,281	1,276	1,331	1,165	1,043	1,010	905	899

Faculty Information



**WGC FACULTY PROFILE
DISTRIBUTION BY HIGHEST DEGREE, 1981/82**

Category	Doctorates		Masters/ Education Specialist		Other**		Total N
	N	%	N	%	N	%	
Full-time Teaching Faculty*	128	65	66	33.5	3	1.5	197
General Administrators	6	100	-	-	-	-	6
Academic Administrators	29	85	5	15	-	-	34
Public Service	1	100	-	-	-	-	1
Librarians	-	-	9	100	-	-	9
Faculty on Leave	7	87.5	1	12.5	-	-	8
Part-Time Faculty	-	-	2	66.6	1	33.4	3
Other (F-T Faculty with Temporary Assignments)	-	-	7	100	-	-	7
Total	171	64.5	90	34	4	1.5	265

*Does not include full-time temporary appointments to fill positions for faculty on leave.

**Other includes Professional, Bachelors, and Miscellaneous Degrees.

**WGC FACULTY PROFILE
DISTRIBUTION BY RANK, 1981/82**

Category	Professor		Associate Professor		Assistant Professor		Instructor		Total N
	N	%	N	%	N	%	N	%	
Full-Time Teaching Faculty*	44	22	63	32	72	37	18	9	197
General Administrators	2	33.4	4	66.6	-	-	-	-	6
Academic Administrators	26	76.5	7	20.5	1	3	-	-	34
Public Service	-	-	1	100	-	-	-	-	1
Librarians	-	-	1	11	2	22	6	67	9
Faculty on Leave	2	25	4	50	1	12.5	1	12.5	8
Part-Time Faculty	-	-	-	-	-	-	3	100	3
Other (F-T Faculty with Temporary Appointments)	-	-	-	-	1	14	6	86	7
Total	74	28	80	30	77	29	34	13	265

*Does not include full-time temporary appointments to fill positions for faculty on leave.

SOURCE: 1981/82 Annual Report

**WGC FACULTY PROFILE
DISTRIBUTION BY TENURE STATUS, 1981/82**

Category	Tenured		Non-Tenured		Total N
	N	%	N	%	
Full-Time Teaching Faculty*	118	60	79	40	197
General Administrators	5	83	1	17	6
Academic Administrators	28	82	6	18	34
Public Service	1	100	-	-	1
Librarians	1	11	8	89	9
Faculty On Leave	7	87.5	1	12.5	8
Part-Time Faculty	-	-	3	100	3
Other (F-T Faculty with Temporary Appointments)	-	-	7	100	7
Total	N 160	% 60	N 105	% 40	N 265

*Does not include full-time temporary appointments to fill positions for faculty on leave.

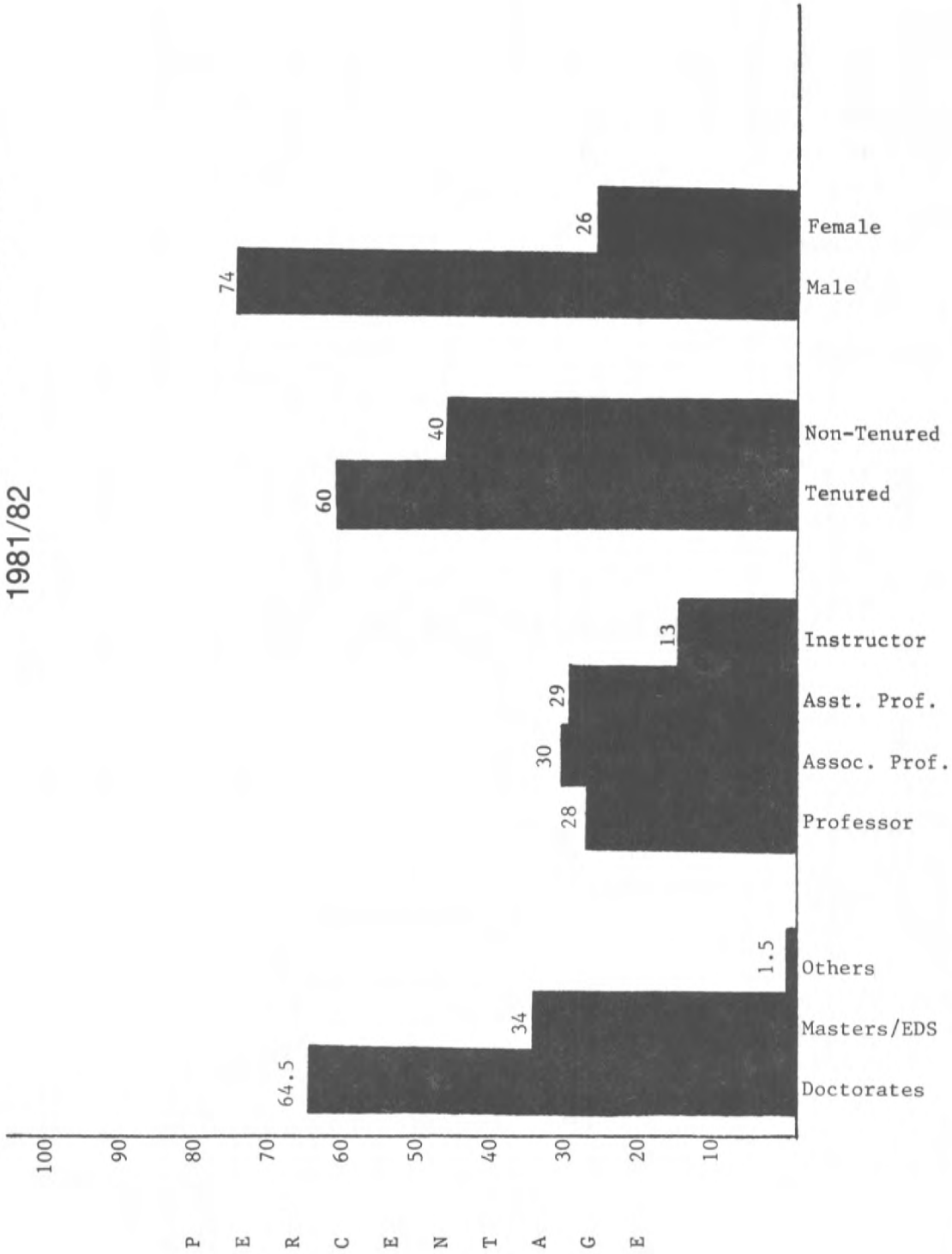
**WGC FACULTY PROFILE
DISTRIBUTION BY SEX, 1981/82**

Category	Male		Female		Total N
	N	%	N	%	
Full-Time Teaching Faculty*	148	75	49	25	197
General Administrators	6	100	-	-	6
Academic Administrators	30	88	4	12	34
Public Service	1	100	-	-	1
Librarians	1	11	8	89	9
Faculty On Leave	7	87.5	1	12.5	8
Part-Time Faculty	-	-	3	100	3
Other (F-T Faculty with Temporary Appointments)	3	43	4	57	7
Total	N 196	% 74	N 69	% 26	N 265

*Does not include full-time temporary appointments to fill positions for faculty on leave.

SOURCE: 1981/82 Annual Report

West Georgia College
SUMMARY OF FACULTY PROFILES
 1981/82



SOURCE: President's Annual Report, 1981/82

Financial Information



West Georgia College
**EDUCATIONAL AND GENERAL BUDGET
 EXPENDITURES**

Fiscal Year 1983*

	-- -- OBJECT CLASSIFICATION -- --				
	82/83 TOTAL BUDGET	Personal Services	Travel	Operating Supplies & Expenses	Equipment
Instruction	\$8,786,658	\$8,143,241	\$137,871	\$421,137	\$84,409
Research	1,047,250	385,250	73,800	568,200	20,000
Academic Support	1,497,238	882,048	16,800	319,324	279,066
Student Services	877,652	763,935	22,850	90,867	0
Institutional Support	3,024,542	2,642,687	22,660	356,860	2,335
Operation & Maintenance of Plant	2,173,860	1,112,376	3,015	1,009,469	49,000
Scholarships & Fellowships	850,000	0	0	850,000	0
TOTAL	\$18,257,200	\$13,929,537	\$276,996	\$3,615,857	\$434,810

Fiscal Year 1982

	-- -- OBJECT CLASSIFICATION -- --				
	81/82 TOTAL ALLOCATION	Personal Services	Travel	Operating Supplies & Expenses	Equipment
Instruction	\$8,393,434	\$7,617,918	\$128,542	\$448,399	\$158,575
Research	107,698	70,715	10,886	24,237	1,880
Academic Support	1,425,266	831,726	17,953	321,133	254,454
Student Services	909,632	771,332	23,802	103,191	11,307
Institutional Support	3,031,670	2,391,532	22,308	561,568	56,262
Operation & Maintenance of Plant	2,150,637	1,082,419	1,764	1,021,575	44,879
Scholarships & Fellowships	150,487	0	0	150,487	0
TOTAL	\$16,168,824	\$12,765,642	\$205,235	\$2,670,590	\$527,357

*FY 83 figures represent budgeted amounts.

West Georgia College
**EDUCATIONAL AND GENERAL BUDGET
 EXPENDITURES**

Fiscal Year 1981

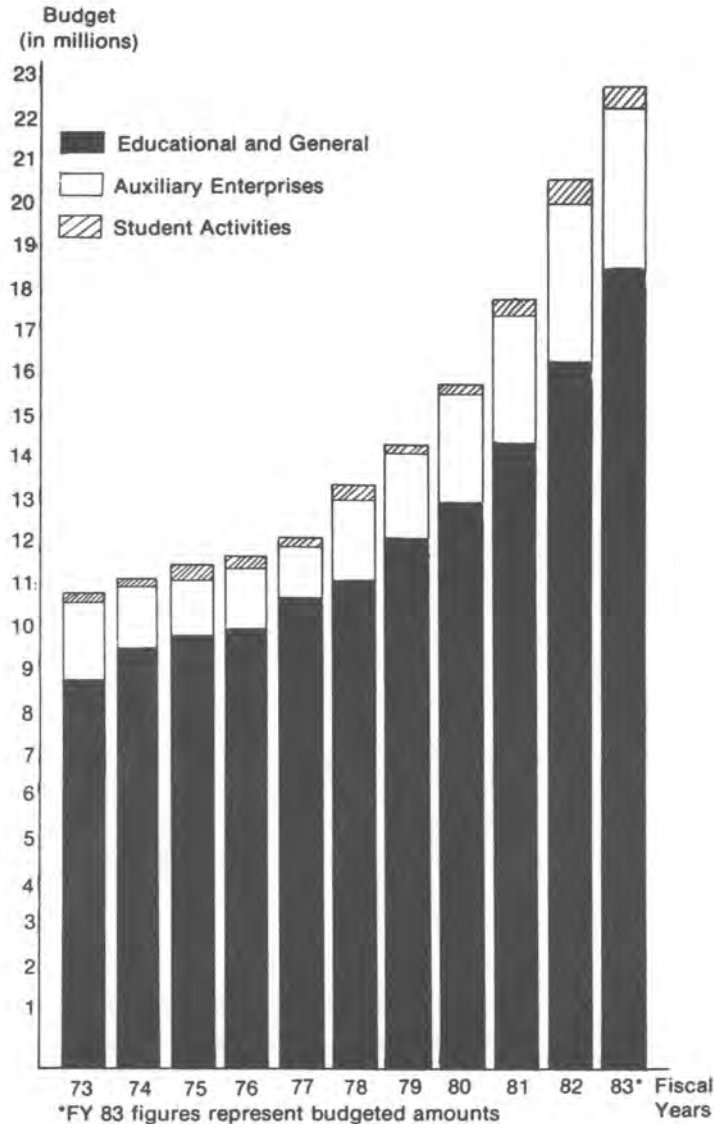
	— — — OBJECT CLASSIFICATION — — —				
	80/81 TOTAL ALLOCATION	Personal Services	Travel	Operating Supplies & Expenses	Equipment
Instruction	\$7,426,504	\$6,768,780	\$109,533	\$433,324	\$114,867
Research	144,592	118,000	5,625	20,707	260
Academic Support	1,284,188	736,399	24,148	196,238	327,403
Student Services	723,265	624,471	16,144	69,677	12,973
Institutional Support	2,574,336	2,061,732	16,633	466,791	29,180
Operation & Maintenance of Plant	1,965,659	980,822	1,907	930,673	52,257
Scholarships & Fellowships	164,047	0	0	164,047	0
TOTAL	\$14,282,591	\$11,290,204	\$173,990	\$2,281,457	\$536,940

Fiscal Year 1980

	— — — OBJECT CLASSIFICATION — — —				
	79/80 TOTAL ALLOCATION	Personal Services	Travel	Operating Supplies & Expenses	Equipment
Instruction	\$6,893,741	\$6,247,645	\$104,949	\$399,249	\$141,898
Research	188,439	142,244	13,394	31,978	823
Academic Support	1,051,885	634,442	9,928	226,114	181,401
Student Services	603,992	524,458	12,019	60,877	6,638
Institutional Support	2,163,002	1,692,810	15,193	427,022	27,977
Operation & Maintenance of Plant	1,696,891	848,435	1,205	802,012	45,239
Scholarships & Fellowships	143,745	0	0	143,745	0
TOTAL	\$12,741,695	\$10,090,034	\$156,688	\$2,090,997	\$403,976

SOURCE: Budget Office

West Georgia College GENERAL BUDGET GROWTH FY 1973 — FY 1983*



West Georgia College operates through the use of three major budgets:

- (1) **The Educational and General (E & G) budget** includes funds received from state appropriations, internal revenues (tuition and fees) and externally funded research grants. E&G funds are used for instruction, research, academic support, student services, institutional support and plant operations.
- (2) **The Auxiliary Enterprises budget** includes funds received from food services, housing, the bookstore and vending machines, and the funds are used to operate each of these activities.
- (3) **The Student Activities budget** includes the revenues from activity fees and gate receipts, such as sporting events. These funds are then used to finance some campus student activities such as the debate team, student government, athletic programs, lecture series and concerts.

West Georgia College

**DISTRIBUTION OF EDUCATIONAL AND GENERAL REVENUE
BY SOURCE**

FY 1979 - FY 1983*

41

Source	FY 1979		FY 1980		FY 1981		FY 1982		FY 1983	
Internal Revenue										
Student Tuition & Fees	\$2,269,476	18.59%	\$2,367,763	18.59%	\$2,802,908	19.59%	\$3,164,372	19.56%	\$3,622,000	19.83%
Indirect Cost Recoveries	45,620	.37	43,298	.34	27,740	.19	19,227	.12	20,000	.11
Sales & Service of Educational Depts.	34,240	.28	25,928	.20	24,985	.17	29,954	.19	24,000	.13
Other Sources	97,745	.80	56,618	.44	104,433	.73	80,227	.50	67,000	.37
Total Internal Revenue	\$2,447,081	20.04%	\$2,493,607	19.57%	\$2,960,066	20.68%	\$3,293,780	20.37%	\$3,733,000	20.44%
State Appropriation	8,957,409	73.38	9,436,133	74.07	10,596,460	74.05	12,092,236	74.76	12,544,200	68.71
TOTAL GENERAL OPERATIONS	\$11,404,490	93.42%	\$11,929,740	93.64%	\$13,556,526	94.73%	\$15,386,016	95.13%	\$16,277,200	89.15%
Departmental Sales & Services	68,768	.56	63,513	.50	77,455	.54	70,004	.43	80,000	.44
Sponsored Operations	734,631	6.02	747,007	5.86	675,986	4.73	718,824	4.44	1,900,000	10.41
TOTAL E & G REVENUE	\$12,207,889	100.00%	\$12,740,260	100.00%	\$14,309,967	100.00%	\$16,174,844	100.00%	\$18,257,200	100.00%

SOURCE: Budget Office

*FY 1983 revenue figures are the amounts **budgeted** for revenue and are subject to amendment.

West Georgia College

**DISTRIBUTION OF EDUCATIONAL & GENERAL
EXPENDITURES BY FUNCTION**

FY 1979 — FY 1983*

42

Function	FY 1979		FY 1980		FY 1981		FY 1982		FY 1983	
Instruction										
School of Arts & Sciences	\$3,548,350	29.28%	\$3,788,609	29.73%	\$4,116,858	28.82%	\$4,637,913	28.68%	\$4,935,966	27.04%
School of Business	784,247	6.47	832,469	6.53	961,574	6.73	1,079,794	6.68	1,106,967	6.06
School of Education	1,679,789	13.86	1,594,230	12.51	1,611,864	11.29	1,837,820	11.37	2,317,231	12.69
Other Instruction	481,542	3.98	678,433	5.33	736,209	5.16	837,907	5.18	426,494	2.34
Total Instruction	\$6,493,928	53.59%	\$6,893,741	54.10%	\$7,426,505	52.00%	\$8,393,434	51.91%	\$8,786,658	48.13%
Research	198,304	1.64	188,438	1.48	144,593	1.01	107,699	.67	1,047,250	5.73
Academic Support	1,052,285	8.68	1,051,886	8.25	1,284,188	8.99	1,425,266	8.81	1,497,238	8.20
Student Services	523,195	4.32	603,992	4.74	723,266	5.06	909,632	5.63	877,652	4.81
Institutional Support	2,006,581	16.56	2,163,002	16.98	2,574,336	18.03	3,031,670	18.75	3,024,542	16.57
Operation & Maintenance of Plant	1,842,967	15.21	1,696,892	13.32	1,965,659	13.76	2,150,637	13.30	2,173,860	11.91
Scholarships & Fellowships	0	0	143,745	1.13	164,045	1.15	150,487	.93	850,000	4.65
TOTAL EXPENDITURES	\$12,117,260	100.00%	\$12,741,696	100.00%	\$14,282,592	100.00%	\$16,168,825	100.00%	\$18,257,200	100.00%

SOURCE: Budget Office

*FY 1983 figures represent budgeted amounts and are subject to amendment.

West Georgia College
**TOTAL EDUCATIONAL & GENERAL EXPENDITURES
 PER FULL-TIME EQUIVALENT STUDENT (FTE)**
 FY 1978 - FY 1983*

Fiscal Year	Educational & General Expenditures	Fall Quarter Full-Time Equivalent Enrollment (FTE)	Total Educational & General Expenditure Per Full-Time Equivalent Student
1977-78	\$12,104,586	4,794	\$2,525
1978-79	\$12,974,558		\$2,784
1979-80	\$12,741,695	4,738	\$2,689
1980-81	\$14,282,592	5,067	\$2,819
1981-82	\$16,168,824	5,490	\$2,945
1982-1983*	\$18,257,200	5,299	\$3,445

SOURCE: Budget Office

*FY 1983 figures represent **budgeted** amounts

West Georgia College
AVERAGE SALARY BY EMPLOYEE CATEGORY
 FY 1978 - FY 1983

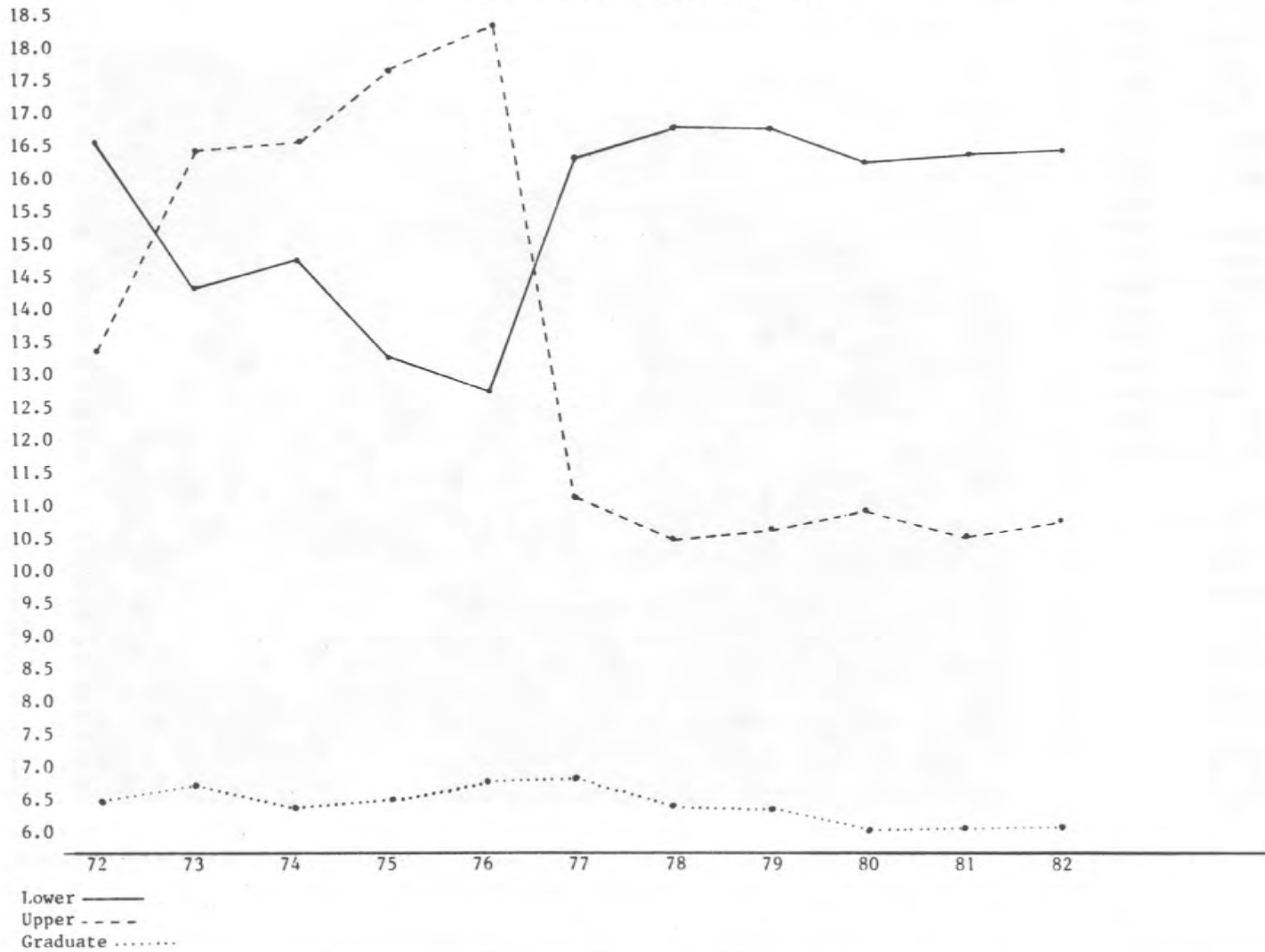
Category	FY 1978	FY 1979	FY 1980	FY 1981	FY 1982	FY 1983
Faculty						
Professor	53 \$20,522	57 \$21,720	57 \$24,054	59 \$26,555	66 \$28,821	74 \$30,854
Associate Professor	82 \$16,829	84 \$17,882	80 \$19,919	77 \$22,173	70 \$24,115	79 \$25,402
Assistant Professor	97 \$13,675	91 \$14,927	88 \$16,886	79 \$18,138	76 \$19,946	66 \$21,186
Instructor	32 \$10,546	28 \$11,903	23 \$13,196	24 \$14,027	30 \$15,484	29 \$16,185
TOTAL-Faculty	265 \$15,408	260 \$17,045	251 \$18,941	239 \$21,103	242 \$23,019	248 \$24,829
Administrative Staff	64 \$18,207	70 \$19,496	74 \$20,779	77 \$22,930	82 \$24,345	83 \$25,379
Clerical Staff	127 \$7,213	135 \$7,823	139 \$8,751	140 \$9,708	148 \$10,851	148 \$11,437
Maintenance	140 \$7,301	146 \$8,064	147 \$8,861	153 \$9,711	158 \$10,843	156 \$10,739

SOURCE: Budget Office

Quarter Credit Hour Information



West Georgia College
Average Quarter Credit Hours Per Student Enrolled By Level
Fall Quarters 1972—1982



West Georgia College
DETAILED ENROLLMENT AND QCH HISTORY
 FY 1976 - FY 1983

	Lower Level			Upper Level			Graduate Level			Total
	Enrollment	Q.C.H.	Avg. Q.C.H.	Enrollment	Q.C.H.	Avg. Q.C.H.	Enrollment	Q.C.H.	Avg. Q.C.H.	Q.C.H.
FY 76										
Summer 1975	634	8,241	13.0	947	13,300	14.0	1,967	19,249	9.8	40,790
Fall 1975	2,257	30,334	13.4	1,494	26,560	17.8	1,912	12,688	6.6	69,582
Winter 1976	2,131	28,346	13.3	1,466	26,589	18.1	1,837	12,831	7.0	67,766
Spring 1976	1,870	23,649	12.6	1,507	27,228	18.1	1,981	13,578	6.9	64,455
FY 77										
Summer 1976	543	7,277	13.4	832	10,981	13.2	1,724	17,103	9.9	35,361
Fall 1976	2,370	30,355	12.8	1,336	24,759	18.5	1,520	10,500	6.9	65,614
Winter 1977	2,175	28,922	13.3	1,351	24,331	18.0	1,540	10,639	6.9	63,892
Spring 1977	1,896	24,209	12.8	1,426	24,717	17.3	1,838	12,286	6.7	61,212
FY 78										
Summer 1977	587	7,165	12.2	765	10,394	13.6	1,518	14,166	9.3	31,725
Fall 1977	2,503	41,631	16.6	1,296	14,642	11.3	1,606	10,882	6.8	67,155
Winter 1978	2,153	36,811	17.1	1,427	16,160	11.3	1,656	10,842	6.5	63,813
Spring 1978	1,918	32,666	17.0	1,411	15,573	11.0	2,010	12,968	6.5	61,207
FY 79										
Summer 1978	464	8,610	18.6	730	6,310	8.6	1,545	14,349	9.3	29,269
Fall 1978	2,385	40,326	16.9	1,238	13,098	10.6	1,400	9,155	6.5	62,579
Winter 1979	2,104	36,215	17.2	1,301	14,103	10.8	1,483	9,482	6.4	59,800
Spring 1979	1,883	32,392	17.2	1,321	14,646	11.1	1,629	10,665	6.5	57,703
FY 80										
Summer 1979	449	8,695	19.4	731	6,316	8.6	1,454	12,839	8.8	27,850
Fall 1979	2,506	42,186	16.8	1,240	13,322	10.7	1,243	7,933	6.4	63,441
Winter 1980	2,265	38,846	17.2	1,306	14,221	10.9	1,189	7,392	6.2	60,459
Spring 1980	2,024	34,971	17.3	1,390	14,592	10.5	1,356	8,403	6.2	57,966
FY 81										
Summer 1980	544	9,662	17.8	746	6,413	8.6	1,301	10,811	8.3	26,886
Fall 1980	2,801	45,694	16.3	1,258	13,874	11.0	1,143	6,901	6.0	66,469
Winter 1981	2,433	40,700	16.7	1,308	14,766	11.3	1,119	6,817	6.1	62,283
Spring 1981	2,119	36,286	17.1	1,402	15,351	10.9	1,308	8,236	6.3	59,873
FY 82										
Summer 81	559	9,428	16.9	757	6,277	8.3	1,178	9,712	8.2	25,417
Fall 1981	3,186	52,619	16.5	1,344	14,294	10.6	1,054	6,352	6.0	73,265
Winter 1982	2,825	47,570	16.8	1,411	15,264	10.8	1,068	6,642	6.2	69,476
Spring 1982	2,481	41,442	16.7	1,457	16,306	11.2	1,200	7,317	6.1	65,065
FY 83										
Summer 1982	590	10,147	17.2	746	6,543	8.8	1,082	9,233	8.5	25,923
Fall 1982	3,612	58,767	16.3	1,397	14,687	10.5	968	6,028	6.2	79,482

WGC HEADCOUNT RELATIVE TO FTE AND QCH HISTORY FALL 1971 - FALL 1982

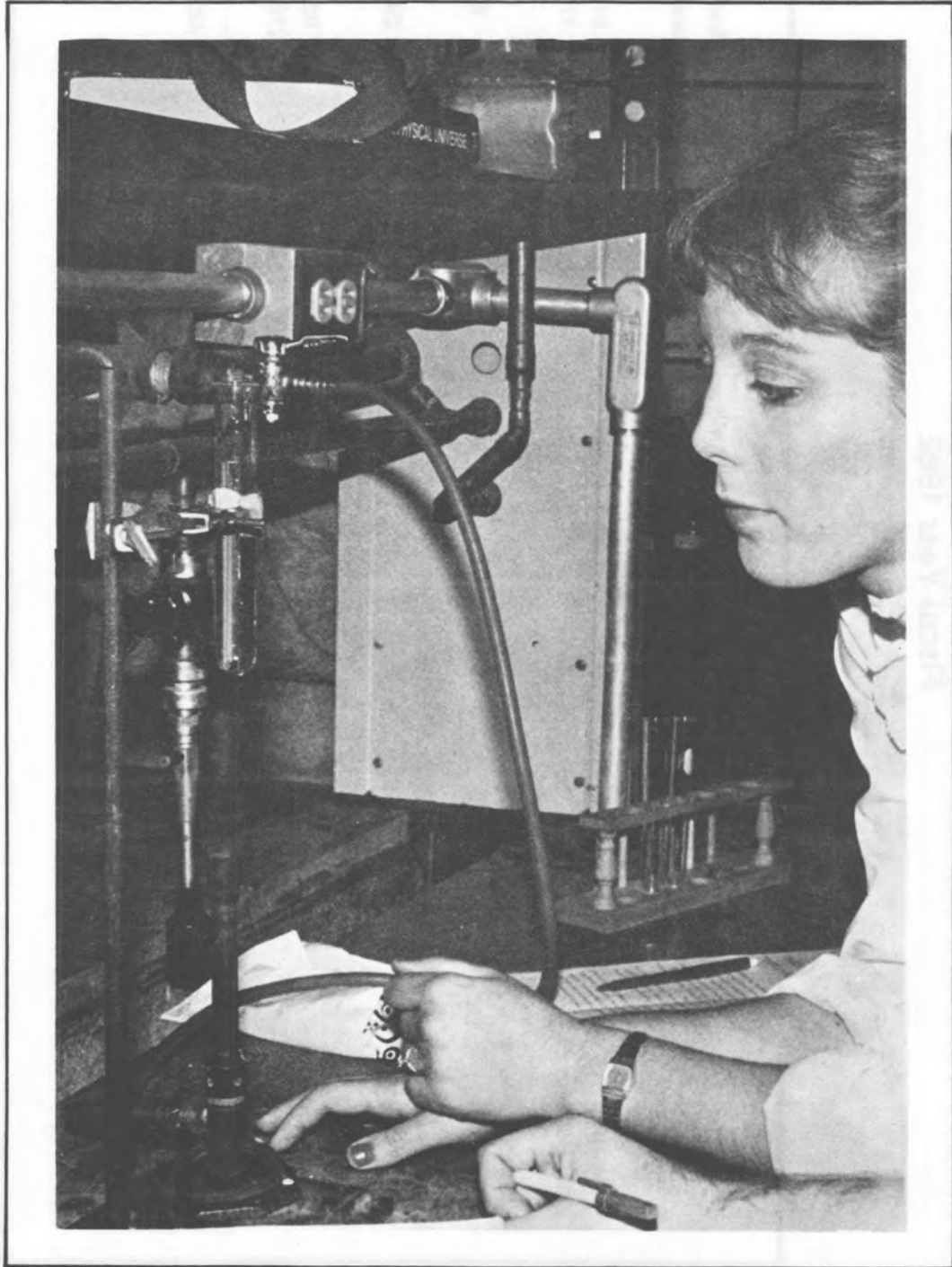
<u>Fall</u>	<u>Headcount</u>	<u>FTE*</u>	<u>Total QCH</u>
1971	6,114	5,649	84,739
1972	5,735	5,196	77,936
1973	5,201	4,566	68,487
1974	5,524	4,438	66,521
1975	5,803	4,639	69,582
1976	5,366	4,374	65,614
1977	5,536	4,477	67,155
1978	5,119	4,172	62,579
1979	5,051	4,229	63,441
1980	5,271	4,431	66,469
1981	5,660	4,884	73,265
1982	6,050	5,299	79,482

*15 QCH = full time

SOURCE: University System of Georgia Quarterly Enrollment Report



Research



Karen Ann, 1988

DISTRIBUTION OF COVILLE AND COVILLOUS MANUSCRIPTS
MAY BE MADE BY OTHERS

West Georgia College
DISTRIBUTION OF GRANTS AND CONTRACTS AWARDED
 Fiscal Year 1982

	# Proposals Submitted	Amount Requested	# Proposals Awarded	Amount Awarded
School of Arts and Sciences				
Research	20	570,000	6	57,184
Instruction	2	15,850*	2	17,680
School of Business				
Instruction	4	22,937	3	6,540
School of Education				
Instruction	3	64,952	2	29,750
Institutional				
Public Service	2	136,000	1	95,000
Instruction	12	515,199	5	216,633
COLLEGE TOTALS	43	1,324,943	19	422,787

*Does not include one grant which depends on enrollment.
 SOURCE: President's Annual Report, 1981-82.

West Georgia College
FACULTY RESEARCH GRANTS

Fiscal Year 1982

Grant #	Amount	Name/Department	Grant Title
82-01	\$ 800	WGC Review	<i>Publication Costs</i>
82-02	\$ 800	Dr. Arons and Rice Psychology Department	<i>Hidden Artist: The Artist Beyond the Disablement</i>
82-03	\$ 600	Mr. Bruce Bobick Art Department	<i>Exploration of the Working Characteristics of Alkyd Resin Paints</i>
82-04	\$ 500	Mr. Cameron Covert Art Department	<i>Porcelain</i>
82-05	\$ 516	Dr. Ben deMayo Physics Department	<i>Mossbauer Study of Unique Alloys Made by Ion Implantation</i>
82-06	\$1500	Dr. W. Glenn Esslinger Chemistry Department	<i>Ethanol Production from Plant Biomass</i>
82-07	\$1000	Dr. John E. Ferling History Department	<i>Washington's War: The Commander and the Continental Army</i>
82-08	\$ 600	Dr. James T. Gay History Department	<i>Homefront Images: A Pictorial History of the American Homefront During World War II</i>
82-09	\$1000	Dr. Edward E. Gilbert Biology Department	<i>Collection of Soil and Litter Arthropod Fauna</i>
82-10	\$1000	Dr. Spencer H. Hamada Biology Department	<i>The Formation and Regeneration of the Nerve-Muscle Junction in Tissue Culture</i>
82-11	\$ 350	Dr. Don R. Nixon Management and Marketing	<i>A Study of the Value Orientations of Hospital Administrators in Relation to Success of the Organization</i>
82-12	\$ 230	Drs. Hunsicker and Southern Management and Marketing	<i>A Study of Female Students Motivation to Manage</i>
82-13	\$ 500	Dr. Lee-jan Jan Sociology Department	<i>Carroll Crisis Intervention Center: An Assessment of Needs</i>
82-14	\$ 400	Dr. Lee-jan Jan Sociology Department	<i>Sex-Role Stereotyping in Television Advertising</i>
82-15	\$ 400	Dr. Paul E. Masters Political Science Department	<i>Atlanta as an International City: What the Next Generation Thinks</i>
82-16	\$ 300	Ms. Poster/Mr. Conner Sociology Department	<i>Attitudes Toward Aging</i>
82-17	\$ 700	Dr. Dwight Romanovicz Biology Department	<i>Direct Localization of Carbonic Anahydrase in C-3 Plants</i>
82-18	\$ 554	Mr. William C. Schaniel Economics Department	<i>Annotation of the Annah E. Snapp Diary</i>
82-19	\$ 250	Dr. Johnny A. Waters Geology Department	<i>Paleoecology and Paleoenvironments of the Bangor Limestone in Northern Alabama</i>

SOURCE: Chairman, Learning Resources Committee

WEST GEORGIA COLLEGE
ALUMNI ASSOCIATION

Alumni Association



WEST GEORGIA COLLEGE ALUMNI ASSOCIATION

The West Georgia College alumni are the largest single constituency related to the institution. The experience and the ability of each alumnus represent a valuable resource for service to the College. An integral part of the College's institutional advancement activities is the services and programs of the Alumni Association.

Membership in the West Georgia College Alumni Association is automatically conferred upon all individuals who attended West Georgia College, Bowdon College, or the 4th District A & M School for at least three quarters and is available, upon request, to other former students. The telephone number of the Alumni Office is 404-834-1263.

Through activities of the Association, alumni are kept apprised of institutional plans, progress, opportunities, and needs. *PERSPECTIVE*, the alumni newspaper, is sent to alumni and friends on a quarterly basis.

A variety of on campus activities are planned for alumni. Deluxe, low cost educational tours to the Middle East, Europe, and the Orient were provided for alumni, faculty and staff, and friends of the college.

OFFICERS

Frances Floyd Estes, *President*

S. Tracy Teal, *Vice President*

Rodney Vollenweider, *Vice President*

Jackson Stephens, *Vice President*

Jerri Gray Garner, *Secretary*

Phyllis L. Fountain, *Director, Development and Alumni Services*

Bob Bolding, *Coordinator of Alumni Services*

SOURCE: WGC Undergraduate Catalog 1982-83
Honor Roll of Giving 1982-83

WEST GEORGIA COLLEGE FOUNDATION

The West Georgia College Foundation, Inc., is a non-profit organization founded and operated for the benefit of West Georgia College. Its functions include receiving and administering private funds and providing other services for the advancement of the College. The policies of the foundation are established by a Board of Trustees composed of outstanding business and professional leaders and by officers elected by the trustees.

The unrestricted gifts received by the foundation are being used currently to:

1. Underwrite an extensive program of student aid.
2. Provide equipment and services which cannot be funded by state appropriations, but which are necessary for institutional advancement.
3. Benefit the College in other ways subject to the approval of the Foundation's Board of Trustees.

The Foundation encourages unrestricted contributions which can be used in a manner deemed most beneficial to the College. Gifts, received for specific purposes that are approved by the College, are used where designated by the donor.

OFFICERS

J. R. Newell, *Chairman*

Lamar Plunkett, *Vice-Chairman*

*Phyllis Lewis Fountain, *Executive Director and Treasurer*

*Tracy Stallings, *Secretary*

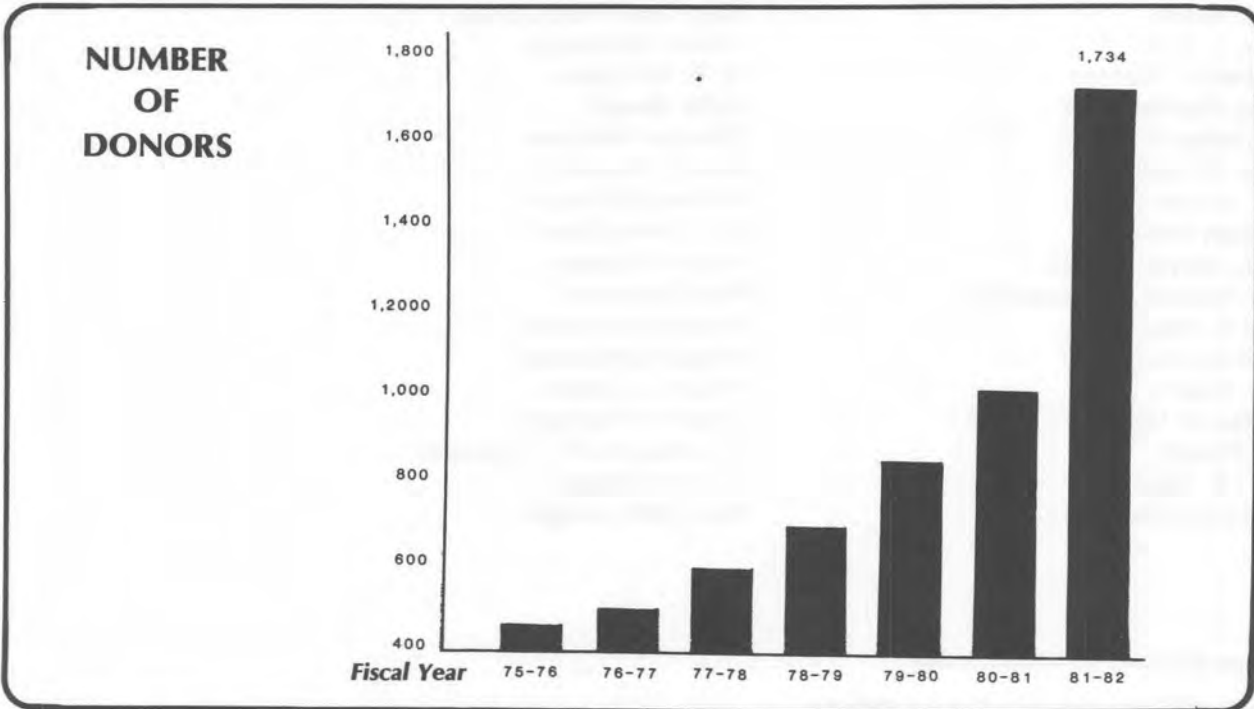
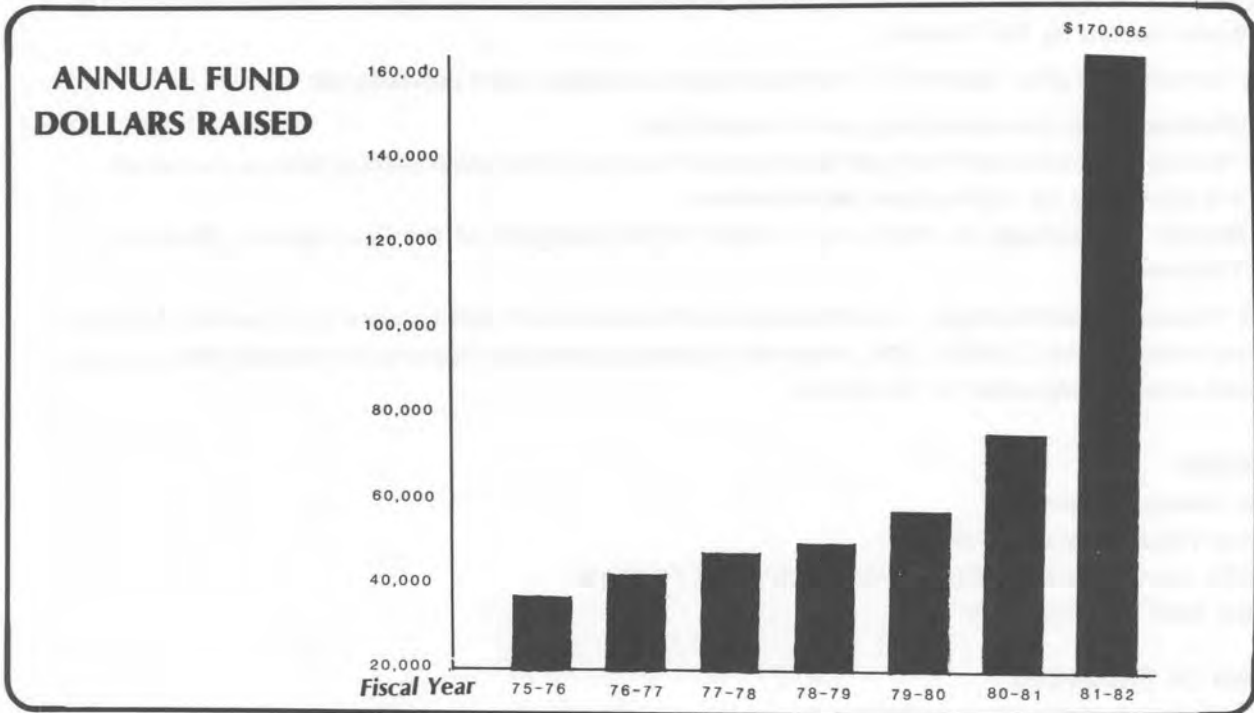
BOARD OF TRUSTEES

A. J. Andre	*Mrs. Opal Ward Jones
*John L. Ball	Hardy McCalman
Michael S. Barron	*A. R. McGukin
*Gene Beckham, Jr.	Dick Newell
Dr. James E. Boyd	Stanley Parkman
John W. Boyd	Lamar Plunkett
Mrs. Helen Boykin	Richard Plunkett
*J. Dean Brown	*Dr. Jimmy Pope
*Dr. L. Wayne Brown	*Hugh Richards
*Rep. William F. Cummings	*Roy Richards
*Ovid R. Davis	Chester A. Roush
*Dr. Alton Hallum	Roger Schoerner
*E. H. Hearn, Jr.	Robert J. Stone
*Harold O. Higgins	David H. Tisinger
Ted Hirsch	Dr. Maurice K. Townsend
John S. Hubbard	W. W. Williams, Jr.
Fred Hutchins	Mrs. Betty Wright

*Indicates West Georgia College Alumni

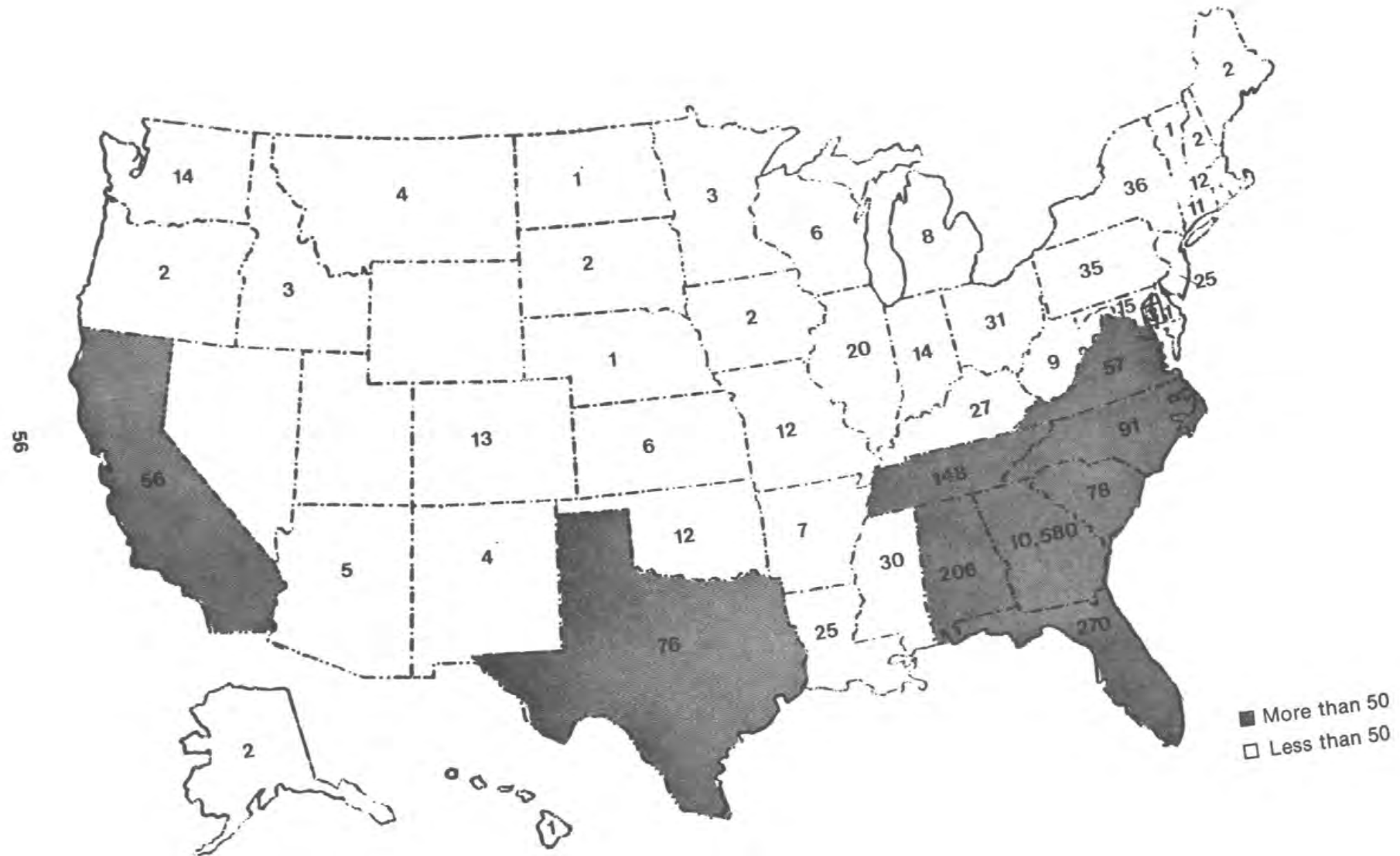
SOURCE: WGC Undergraduate Catalog 1982-83

West Georgia College
ANNUAL FUND DRIVE RESULTS
 Fiscal Years 1975/76 to 1981/82

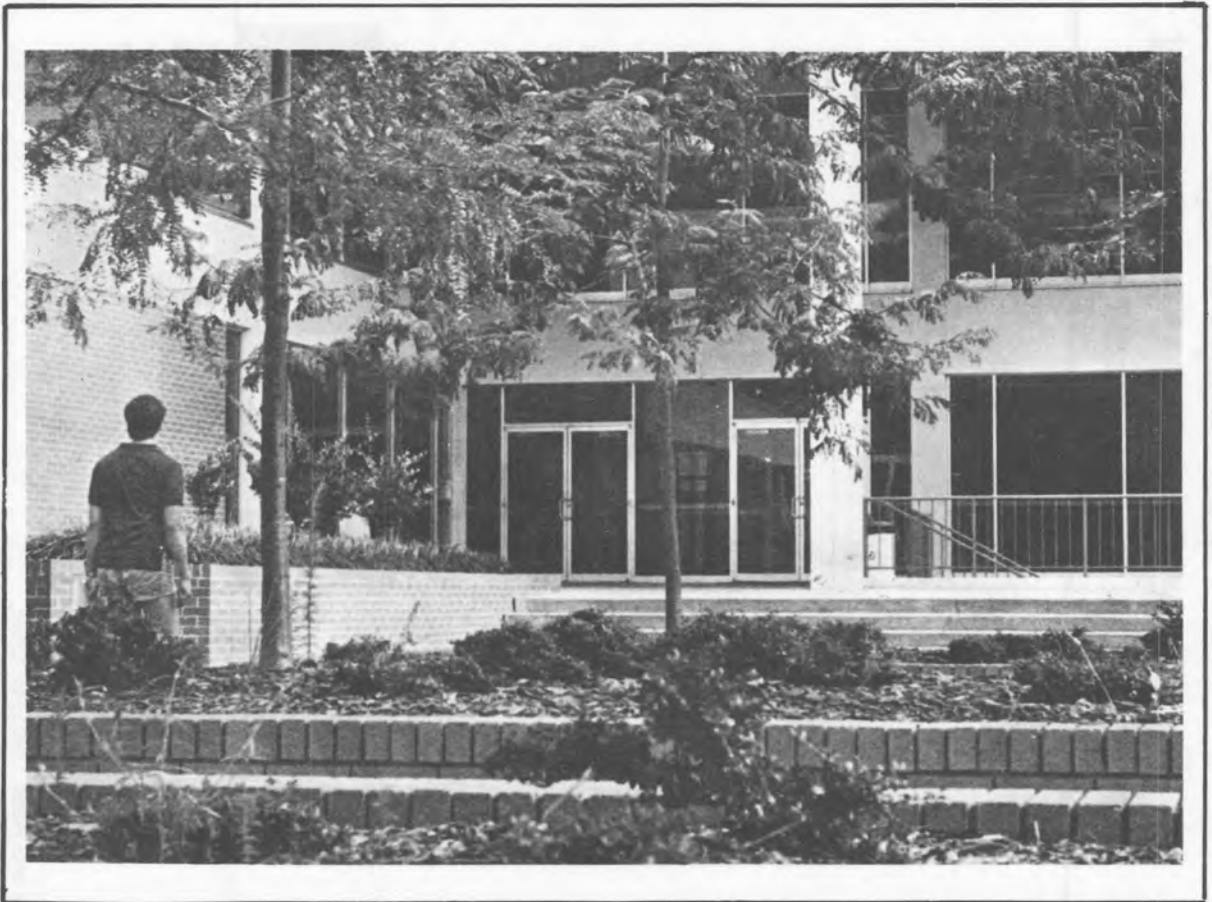


SOURCE: 1981 Annual Fund Honor Roll of Giving, WGC Office of Development and Alumni Services

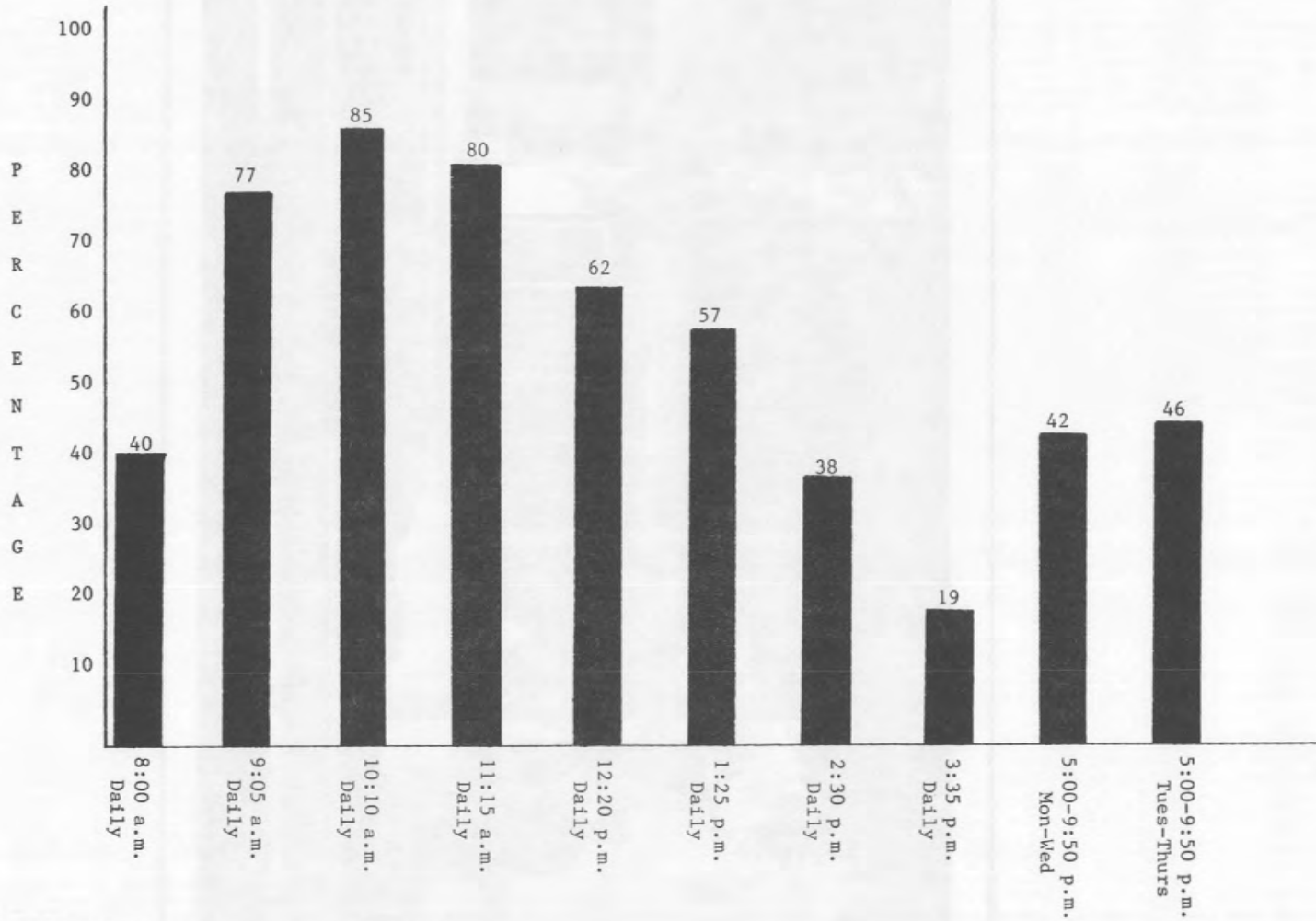
NUMBER OF WGC ALUMNI BY STATE 1980



Physical Plant

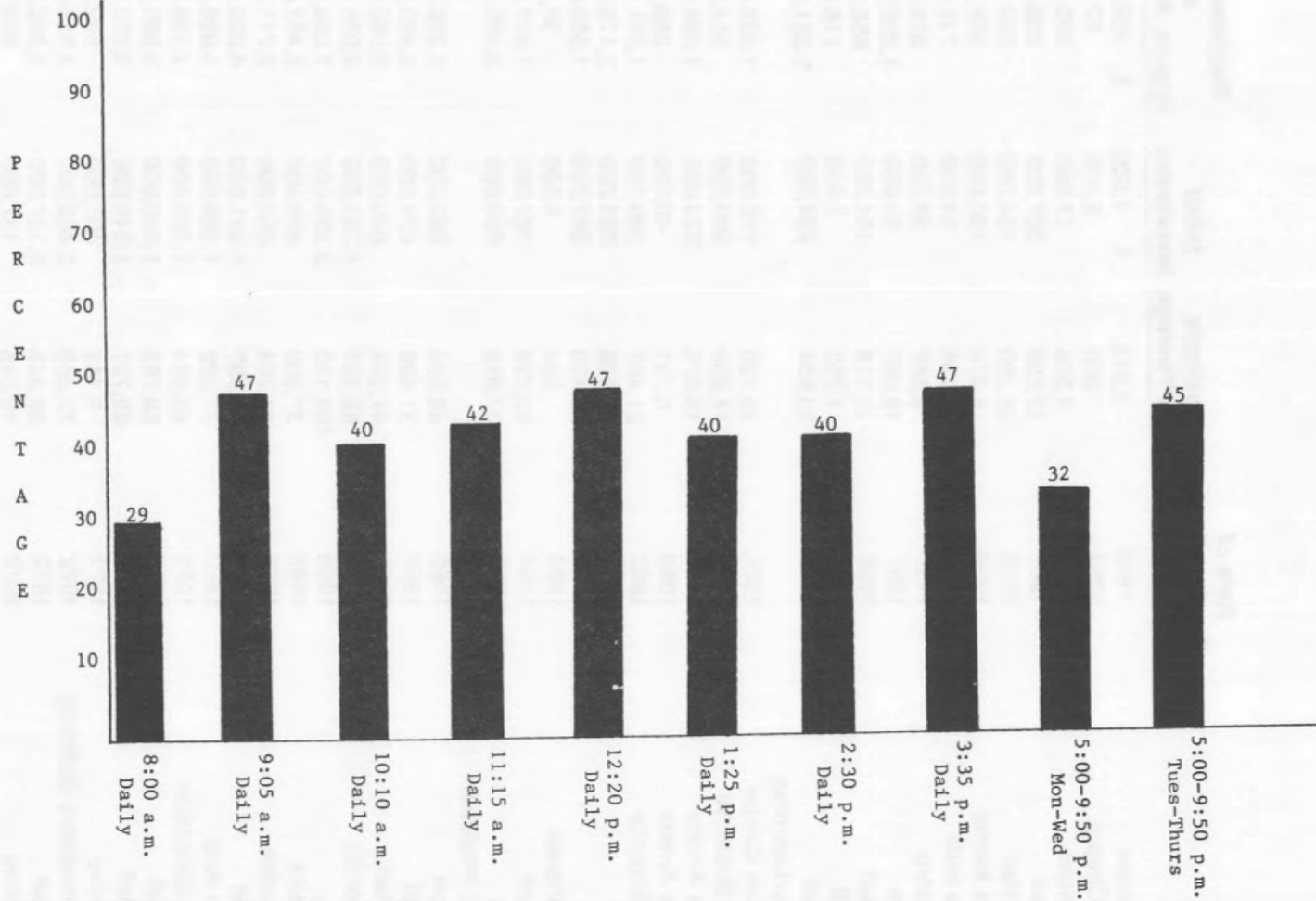


West Georgia College
CLASSROOM UTILIZATION
 Fall Quarter 1982



SOURCE: Building and Room Utilization Chart,
 University System of Georgia Facilities Inventory Edit

West Georgia College
LABORATORY UTILIZATION
 Fall Quarter 1982



SOURCE: Building and Room Utilization Chart,
 University System of Georgia Facilities Inventory Edit

West Georgia College
PHYSICAL PLANT
as of June 30, 1981

<u>Facility</u>	<u>Date of Construction or Acquisition</u>	<u>Approximate Square Footage</u>	<u>Initial Investment</u>	<u>Replacement Cost or Approx. Present Value</u>
Bonner House	1843	2,345	\$ 7,000	\$ 152,000
Kennedy Chapel	1893	880	5,000	57,000
Alumni House	1907	4,504	17,000	293,000
Melson Hall	1907	12,889	307,000	838,000
Adamson Hall	1918	15,290	134,000	994,000
President's Home	1930	8,274	100,000	538,000
Mandeville Hall	1935	10,954	54,000	712,000
Martha Munro	1935	8,867	53,000	576,000
Auditorium	1937	19,066	50,000	1,239,000
Sanford Hall	1938	10,118	164,000	658,000
Hamm Hall	1944	1,787	7,000	116,000
Aycock Hall	1952	23,554	254,000	1,531,000
Geography/Learning Resources Center	1954	15,726	112,000	1,022,000
School of Business	1958	14,682	209,000	954,000
Mandeville Annex	1959	16,376	224,000	1,064,000
Visual Arts Annex	1959	8,731	40,000	568,000
Callaway Science	1962	21,407	309,000	1,391,000
Row Hall	1963	33,522	503,000	2,179,000
Cobb Hall	1964	25,430	367,000	1,653,000
Old Greenhouse	1964	504	5,000	33,000
Strozier Hall	1964	22,726	367,000	1,477,000
Gunn Hall	1965	37,916	690,000	2,465,000
Health and Physical Education	1965	49,636	893,000	3,226,000
Boykin Hall	1966	37,889	630,000	2,463,000
Prichard Hall	1966	47,084	840,000	3,060,000
Student Center	1967	62,127	1,331,000	4,038,000
Library	1968	109,155	3,255,000	7,095,000
Math-Physics	1968	37,800	808,000	2,457,000
Social Science	1968	41,704	808,000	2,711,000
Downs Hall	1969	62,397	1,241,000	4,056,000
Classroom Arts	1970	77,328	1,569,000	5,026,000
School of Education	1970	63,684	1,792,000	4,139,000
Watson Hall	1970	59,762	1,320,000	3,885,000
Bowdon Hall	1971	58,797	1,649,000	3,822,000
Health Center	1971	9,114	407,000	592,000
Biology-Chemistry Building	1972	72,860	2,463,000	4,736,000
Roberts Hall	1972	82,345	2,137,000	5,352,000
Shop Building	1972	10,645	137,000	692,000
Strozier Annex	1972	26,801	728,000	1,742,000
Vehicle Repair Building	1972	3,900	40,000	254,000
Warehouse	1972	7,608	98,000	495,000

Physical Plant (continued)

<u>Facility</u>	<u>Date of Construction or Acquisition</u>	<u>Approximate Square Footage</u>	<u>Initial Investment</u>	<u>Replacement Cost or Approx. Present Value</u>
Tyus Hall	1973	51,119	1,427,000	3,323,000
Food Service Building	1974	48,160	1,465,000	3,130,000
Locksmith-Electronics	1974	987	2,000	64,000
Greenhouse Grounds Shop	1976	600	1,000	39,000
Grounds Maintenance Building	1977	1,800	16,000	117,000
Heavy Equipment Shop	1977	720	2,000	47,000
Lawn Mower Repair Shop	1977	960	3,000	62,000
Foundry	1979	400	1,000	26,000
Observatory	1979	484	16,000	31,000
Field House	1980	3,026	30,000	197,000
Old Barn	1980	1,420	5,000	92,000
Track Building	1980	800	5,000	52,000
Storage Warehouse	1980	5,000	20,000	325,000
Baseball Press Box	1981	779	8,000	51,000
Pavilion	1981	9,000	50,000	585,000
TOTAL		1,361,439	29,175,000	88,492,000

SOURCE: Building and Room Utilization Chart,
University System of Georgia Facilities Inventory Edit

WEST GEORGIA COLLEGE LAND HOLDINGS

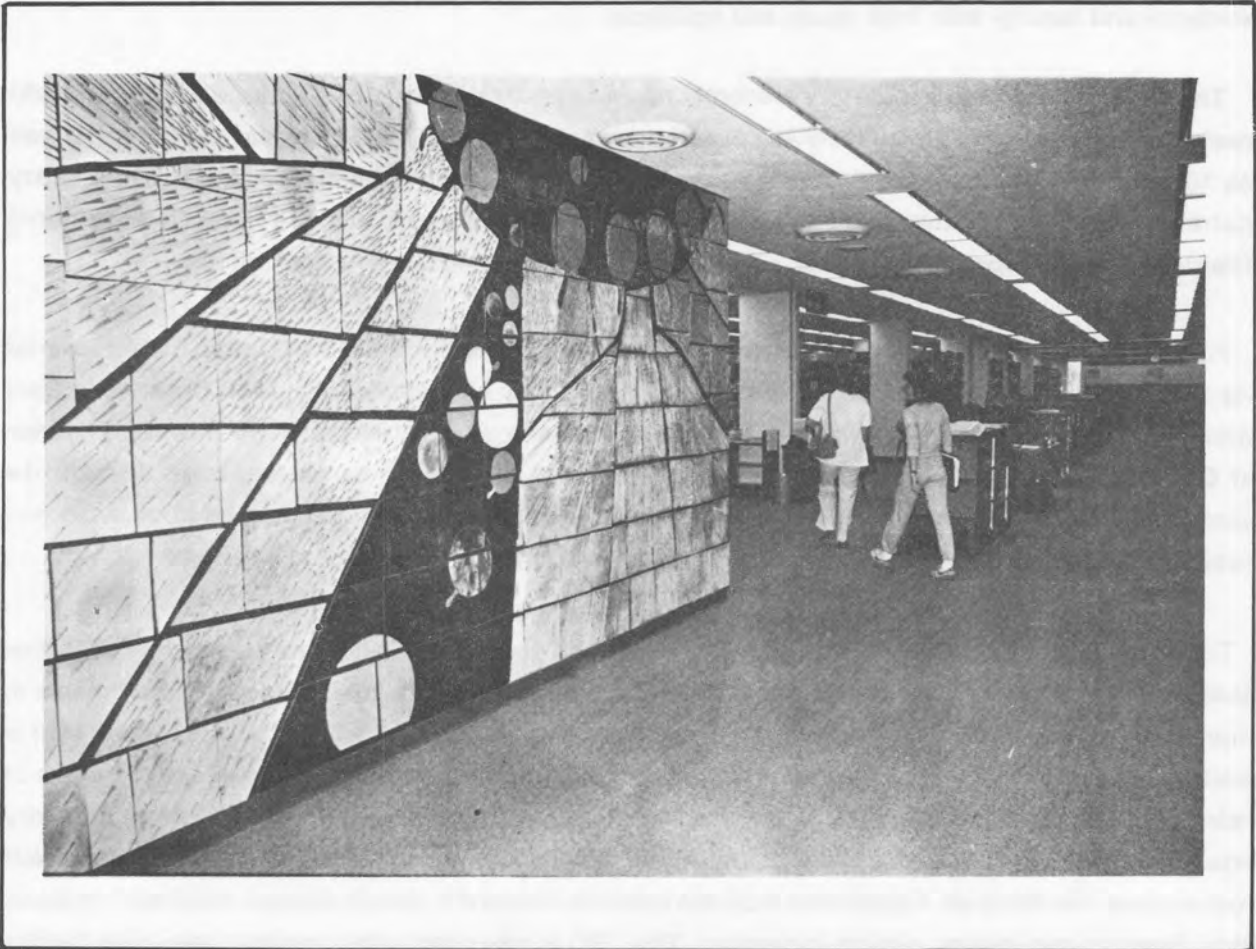
<u>Property</u>	<u>Acres</u>	<u>Year</u>	<u>Cost</u>
B.A. Sharpe	275.000	1970	\$9,625.00
Driver	0.319	1965	5,500.00
J. Perkins	0.976	1965	4,500.00
Pope	3.850	1965	5,500.00
O.R. Perkins	1.790	1965	4,700.00
Cash	1.083	1965	7,000.00
Herb	0.483	1966	4,000.00
Cole	25.010	1966	20,758.30
Roop	4.410	1966	60,000.00
Hughes	1.860	1967	8,212.50
Pruitt	0.226	1967	10,000.00
Harper	0.164	1968	5,000.00
Staples	17.640	1968	44,100.00
Cole	65.650	1973	128,017.50
Sold to City of Carrollton	(15.000)	1980	(29,250.00)
	383.46		\$287,663.30
Current value of land	\$5,000,000		

SOURCE: Campus Development

WEST GEORGIA COLLEGE
KAYE B. INGRAM LIBRARY

Library

The library is a place where you can find the books you need for your classes. It is also a place where you can find the books you need for your personal interests. The library has a large collection of books, including fiction, non-fiction, and reference books. It also has a variety of services, including book borrowing, interlibrary loan, and research assistance. The library is open to all students and faculty members. It is a great place to study and to learn.



The library is a place where you can find the books you need for your classes. It is also a place where you can find the books you need for your personal interests. The library has a large collection of books, including fiction, non-fiction, and reference books. It also has a variety of services, including book borrowing, interlibrary loan, and research assistance. The library is open to all students and faculty members. It is a great place to study and to learn.

WEST GEORGIA COLLEGE IRVINE S. INGRAM LIBRARY

The Library is one of the most important centers on any campus and West Georgia College's Irvine Sullivan Ingram Library is one of the most modern library facilities in the state of Georgia. The first phase of this four story structure was built in 1968 and the addition was completed in 1980 to provide over 85,000 square feet of usable research/storage areas and over 1,000 seating spaces for students and faculty.

The library presently contains seminar and conference rooms, lockable faculty carrels, hundreds of individual study carrels, a room for microform reading, the Annie Belle Weaver Special Collections Room, large areas for reference, periodical materials, maps and the circulating book collection. Computer terminals, video receivers, typewriters and copy machines are also available to assist students and faculty with their study and research.

The Irvine Sullivan Ingram Library presently houses approximately 238,000 bound volumes, 16,500 reels of microfilm, a limited audiovisual collection and more than 650,000 pieces of microform as well as 10,000 maps and charts and 11,000 volumes/pieces of special collection material. The Library currently subscribes to over 1,300 magazines and newspapers and is also the Sixth Congressional District selective depository for over 130,000 United States government publications.

Faculty and graduate students have automated access to materials in other United States libraries via SOLINET's on-line interlibrary lending system and may also apply for a Joint Borrower's Card which can be utilized to check out library materials from any of the other thirty-two University System of Georgia institutions' libraries. Literature searches in all disciplines are available through the automated Dialog Information Retrieval Service and the library also has automated book order and cataloging services to insure maximum efficiency of its material processing operation.

The Learning Resources Center, located on the ground floor of the Geography/Learning Resources Building with an extension in the Education Center, assists faculty members from all departments in improving instruction through the use of audio-visual equipment and materials. A well trained staff is available to provide professional services and consultation in developing more effective means of instruction. Services include production of color slides, B & W film and prints, charts, graphs, dry mounting, laminating, transparencies, audio tape production and dubbing, and film procurement from various film libraries. Equipment includes cassette recorders, record players, overhead, opaque, slide, filmstrip and motion picture projectors. The LRC is equipped with a modern television facility located in the Education Center to provide the faculty with up-to-date color video taping capabilities. WWGC, the College's educational FM radio station, is maintained by students and operated under the supervision of the LRC.

SOURCE: WGC Undergraduate Catalog 1982-83, Irvine S. Ingram Library

The staff of the Library and the Learning Resources Center are comprised of thirty full-time employees. Approximately 44% of the staff members of the Ingram Library are professional librarians holding faculty rank with appropriate graduate degrees in Library Science from accredited library schools.

A compilation of the Ingram Library's Acquisition and Services statistics for the past three years are provided in the table below.

West Georgia College
LIBRARY ACQUISITIONS
FY 1979 — FY 1982

	FY 1979	FY 1980	FY 1981	FY 1982
HOLDINGS				
Volumes added during year	10,612	2,396	7,403	8,813
Volumes held at end of year	216,577	218,973	226,376	235,189
Reels of microfilm held at end of year	15,437	15,751	16,091	16,424
Physical units of other forms of microtext held at end of year	564,563	590,187	614,517	668,048
Periodical titles being received at end of year	1,989	1,457	1,314	1,355
ITEMS				
U.S. Documents	112,227	127,237	141,058	130,699**
Annual Reports of Corporations	792	494	624	505
CIRCULATION INFORMATION	111,013	127,038	126,539	127,055
INTERLIBRARY LOANS				
Borrowed	812	603	927	1,150
Loaned	483	1,002	1,510	1,765
REFERENCE QUESTIONS				
Information	7,937*	8,987	14,562	12,661
General	Not counted	5,222	5,348	7,349

*Government Document and Periodical reference questions were not counted in FY 1979.

**Materials currently included in *Physical units of other forms of microtext held at end of year* was previously counted with *U.S. Documents*.

SOURCE: Irvine S. Ingram Library

WEST GEORGIA COLLEGE COMPUTER CENTER

The Computer Center at West Georgia College is a state-of-the-art facility that provides students with the latest in computer technology. The center is open to all students and is a great place to learn more about the exciting world of computers.

Computer Resources



West Georgia College is a state-of-the-art facility that provides students with the latest in computer technology. The center is open to all students and is a great place to learn more about the exciting world of computers.

WEST GEORGIA COLLEGE COMPUTER CENTER

Computer systems primarily used at the Computer Center include the locally operated and maintained CDC OMEGA 480 model 1, the IBM Series/1 model F minicomputer, a TI 990-20 minicomputer, and the University of Georgia Computer Network's CDC CYBER 170/730. Other hardware facilities available are described below.

HARDWARE FACILITIES

<i>Description</i>	<i>Quantity</i>
CDC 1805 Remote Batch Terminal - a simple computer with the capability to send card input to a remote control central processor and to print information received from the central processor.	1
HALCYON 4200 - (1) sends and receives messages to the network central processor; (4) support the local area network (LAN) on campus.	5
IBM 3275 terminal and 3785 printer remote station - used for 327x terminal applications development and system test.	1
CMC-4 DPF Unit - controls the flow of information between the OMEGA CPU and remote batch terminals.	
Interactive Terminals	
Decwriter - three have APL features	11
PERKIN-ELMER CRT	6
Texas Instruments	6
Elite 1521	1
MICRO's	
APPLE II Plus	15
IBM PC	1
IBM Displaywriter System	1
(On Order)	
IBM PC used for academic support in	12
APPLE IIe lab setting	15

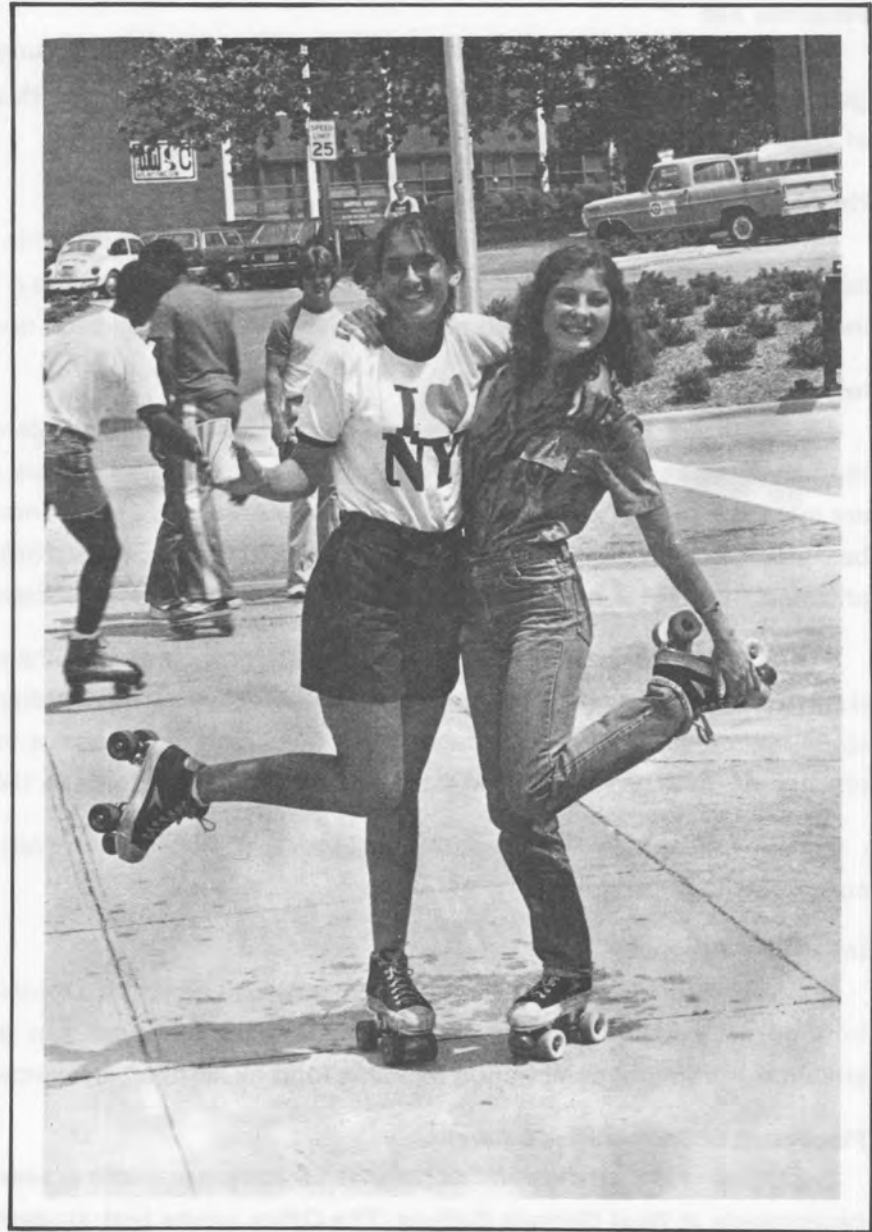
The available computer resources are used for administrative work of the college, for faculty, student, and institutional research, and extensively for instructional purposes. The demand for data processing resources has grown steadily, both in quantity and quality of resources and in the number of users. The following table demonstrates the OMEGA utilization and the 12.7 percent increase of jobs run in fiscal year 1982.

OMEGA UTILIZATION

User	Percent of Total Time Used	Number of Jobs Run	Percent of Total Jobs Run
Administration	76.7	33,117	49.2
Instruction	14.1	27,214	40.4
Faculty and Institutional Research	5.3	4,334	6.4
System Maintenance and Miscellaneous	3.9	2,663	4.0
<hr/>			
Totals			
Fiscal Year 1982		67,328	
Fiscal Year 1981		59,741	
Percent Increase		12.7%	

The Computer Center provides technical and liaison support between instructional and research users and the available computational support resources. Faculty, staff, and students can receive guidance about procedures and desirable techniques to be followed when using application packages. Diagnostic analysis support is provided when difficulties are encountered in the use of these resources. Data entry for research, instruction, and administrative work is available. Several high level programmers plan and develop application systems with the administrative users.

Student Services



WEST GEORGIA COLLEGE STUDENT SERVICES

Admissions

The Admissions Office travels the state talking with high school and junior college students about West Georgia College, shows visitors about campus, sponsors visitation days, works with orientation, and processes applications for admissions.

Financial Aid

The Financial Aid Office coordinates financial assistance, funded by the federal and state governments, the College, WGC Foundation, companies and individuals, to approximately one-third of West Georgia's students.

Health Services

The Student Health Center, which houses both an outpatient clinic and the infirmary, is under the supervision of a full-time physician. Nurses are on duty 24 hours a day. The Center is in operation from the day residence halls open through the last day of exams each quarter.

Intercollegiate Athletics

West Georgia College is extremely proud of its successful intercollegiate athletics programs. Women participate in basketball, cross country, softball, track, tennis, and volleyball. Women's teams are members of the Association of Intercollegiate Athletics for Women. Men participate in baseball, basketball, cross country, football, golf, tennis, and track. As of 1983, all of the men's teams will be affiliated with Division II of the National Collegiate Athletic Association.

The women's basketball team was runner-up for the national championship in 1976 and won the state title in the 1981 and 1982 seasons. Volleyball has been equally successful, having won numerous state championships. West Georgia College men produced a national collegiate basketball championship team in 1974 and a football championship team in 1982.

Athletic grants-in-aid are available in all sports. Athletic facilities are among the best anywhere for a college division program.

Intramural Program

Opportunities for recreation, social contacts and healthful exercise are provided by the College through an excellent intramural athletic program for those not participating in intercollegiate athletics. Intramural competition includes football, softball, basketball, volleyball, tennis and track.

Placement & Cooperative Education

The Office of Placement and Cooperative Education provides a centralized placement service for all departments at West Georgia College. The Office serves both students and alumni who are seeking full-time, part-time or summer employment by providing a job listing service whereby students and

alumni may keep their resumes, recommendations and related materials on file to be sent to prospective employers upon request. Campus interviews are scheduled throughout the year with representatives from companies, government agencies and school systems. In addition to maintaining a library of current information on state and federal jobs, the job market in general, and various companies, the office also conducts workshops on resume writing and interview techniques. This Office coordinates the Co-Op Program for students desiring to work and go to college on an alternating quarters basis. It also provides application forms and information about internships for students in business, public service agencies and governmental institutions.

Registrar's Office

The Registrar's Office conducts all registration and early registration activities. The Office issues a bulletin of course offerings prior to each quarter, provides the recording function for all grades received in course work and sends transcripts when requested by the student. A new early registration system has recently been implemented which enables students to obtain confirmed schedules.

Residence Life

West Georgia living centers meet the physical needs of comfort, safety, and attractive surroundings and aid in the development of a disciplined mind, a social consciousness, and a large degree of responsibility for governing a group's affairs. To this end, the Residence Life Office supervises the duties of all resident advisors, head residents, and resident directors. The staff process all housing applications and make hall and room assignments.

Student Activities

The Student Activities Office plans and directs the many phases of college life not directly related to the classroom. The Student Activities personnel coordinate offerings of the College Program Board, serve as advisors for Greek organizations and other student groups, organize Homecoming and many other activities.

Student Development Center

The Student Development Center offers a variety of services which are free to all West Georgia College students. Professional counselors are available to assist students in coping with personal problems. The Center conducts workshops on a regular basis to assist students in planning for their futures and in dealing with other concerns about college life. Counseling is available for individuals and for groups exploring career options. A computerized career guidance program is available to help students in determining career interests and preferences. The Center also provides a tutorial service and achievement programs for students with study or learning problems. Disabled students with special needs and problems can utilize services provided by the Center. The international student advisor provides assistance and advice regarding housing, immigration matters, finances, personal adjustment and referrals to appropriate members of the College and the Carrollton community.