



# 2013-14 FACT BOOK

UNIVERSITY of  
West Georgia



# University of West Georgia

## 2013 -2014 Fact Book



*Institutional Research and Planning*

*Carrollton, Georgia 30118-4530*

*678-839-6449*



# University of West Georgia

## 2013 – 2014 Fact Book

### Table of Contents

Preface .....	iii
<b>General Information</b>	
University History.....	2
Mission and Vision Statement .....	3
Strategic Plan .....	3
Board of Regents.....	4
UWG President.....	7
UWG Administration .....	8
Accreditations and Affiliations .....	13
<b>Historical Information</b>	
Total Enrollment by Course Level .....	18
Total Students FTE.....	19
Student Credit Hours by College and School.....	20
Degrees and Awards Conferred .....	27
<b>Student Information</b>	
Student Body.....	34
Admissions .....	37
Geographic Origin by County .....	39
Geographic Origin by State or Territory.....	41
Geographic Origin by Country.....	42
Off Campus Site Profile .....	44



# University of West Georgia

## 2013 – 2014 Fact Book

### Table of Contents Continued

#### Student Information (continued)

Retention and Graduation Rates.....	44
Continuing Education.....	46
Alumni by County.....	47
Alumni in the United States.....	48

#### Student Services

Housing and Residence Occupancy.....	50
Other Services.....	52
Irvine Sullivan Ingram Library.....	54

#### Employee Information

Faculty Profile.....	58
Faculty by College/School.....	60
Employee Average Salary.....	67

#### Financial Information

University Operating Expenses.....	72
University Revenue by Source.....	74
Distribution of the Student Dollar.....	75
Net Assets.....	76
Financial Aid.....	77
Research and Sponsored Projects.....	80
Fund Raising.....	82



# University of West Georgia

## Preface

The Department of Institutional Research and Planning is pleased to present the 2013-14 edition of the University of West Georgia *Fact Book*. It is our hope and intent that this volume continues the tradition of providing reliable statistical data and summary information designed to answer the most frequently asked questions about the university. Based on sound institutional research, the *Fact Book* serves as a good, first point-of-reference for institutional assessment, self-study and planning. In total, it provides the institutional profile as of Fall 2013 for our many publics.

In addition, individuals representing many different units provided data, information, and suggestions that contributed to the improvement of the *Fact Book*.

Institutional Research and Planning

Phone: (678) 839-6449

Fax: (678) 839-4765

[www.westga.edu/irp](http://www.westga.edu/irp)

Dr. Catherine A. Jenks, Interim Director and Custodian of Records

Ms. Elaine Harper, Senior Institutional Research Analyst

Ms. Tara Pearson, Senior Institutional Research Analyst

Ms. Erma Shooks, Senior Department Assistant



## General Information





## UWG History

The University of West Georgia was established as an Agricultural and Mechanical School in 1906. The School became a junior college in 1933 and was named West Georgia College. The Board of Regents of the University System of Georgia authorized the College to confer the Bachelor of Science Degree in 1957, which made it a four-year college. West Georgia College was officially named State University of West Georgia in 1996 and University of West Georgia in 2005.

The Board of Regents authorized the addition of a three-year program in 1939 and a graduate program at the master's level in 1967. The Board approved a cooperative external degree program between Dalton and the University in 1983 and opening the Newnan Center in 1988.

The seven schools and colleges within the University are the College of Arts and Humanities, College of Science and Mathematics, College of Education, College of Social Sciences, Richards College of Business, Honors College and Trans-Disciplinary Programs, and Tanner Health System School of Nursing.

The Honors Program began in 1975 and became Georgia's first Honors College in 1999.

The Commission on Colleges and the Southern Association of Colleges and Schools first accredited the University in 1936. The University was last reaffirmed in January 2003.

### ***Presidents***

Irving S. Ingram (1933-1960)

William H. Row (1960 - 1961)

James E. Boyd (1961-1971)

Ward Pafford (1971-1975)

Maurice K. Townsend (1975-1993)

Beheruz N. Sethna (1994-2013)

Kyle Marrero (2013-Present)

*Source: Institutional Research and Planning*



## UWG Mission Statement

The University of West Georgia seeks to achieve preeminence in providing educational excellence in a personal environment through an intellectually stimulating and supportive community for its students, faculty, and staff.

### Purpose

The University, a charter member of the University System of Georgia, is a comprehensive, residential institution providing selectively focused undergraduate and graduate education primarily to the people of West Georgia. The University is also committed to regional outreach through a collaborative network of external degree centers, course offerings at off campus sites and an extensive program of continuing education for personal and professional development. Opportunities for intellectual and personal development are provided through quality teaching, scholarly inquiry, creative endeavor, and service for the public good.

### Essential Activities

West Georgia educates students in a range of disciplinary, interdisciplinary, and professional programs at the baccalaureate level. It also offers a significant number of graduate programs at the master's and educational specialist's levels. The University has a commitment to education at the doctoral level in the field of education as well as other selected areas. In addition to being accredited as an institute of higher education, the University maintains national accreditation or recognition in most undergraduate and graduate fields of specialization.

The University of West Georgia pursues its purpose through the following activities:

- Instruction in general education and the promotion of life-long learning that together lay the foundations of what is essential to being an educated person.
- Faculty-directed student research and professional activities that complement classroom learning through learning by doing and reflection on doing.
- Faculty research, scholarship, and creative endeavors that promote knowledge, enhance professional development, contribute to quality instruction, and provide for significant student involvement and field based experience.
- Educational opportunities such as the Honors College and, for extraordinary high school-aged students, the Advanced Academy of Georgia that serve the needs of exceptionally prepared students.
- Systematic investigation of teaching and student learning that fosters innovation in teacher, professional, and pre-professional preparation.
- The use and exploration of existing and emerging technologies that improve opportunities for faculty and student learning.
- A broad range of public service activities and proactive partnerships that: promote more effective utilization of human and natural resources; contribute to economic, social and technical development; and enhance the quality of life within the University's scope of influence.
- Student services, including outstanding first-year experiences, which increase opportunities for academic success and personal development and enhance the climate of campus life.

The Strategic Plan is at [http://www.westga.edu/vpaa/index\\_7819.php](http://www.westga.edu/vpaa/index_7819.php)



## Members of the Board of Regents

Donald M. Leebern, Jr., McDonough	At-Large
James M. Hull, Augusta	At-Large
William H. "Dink" NeSmith, Jr., Athens	At-Large
Thomas Rogers Wade, Atlanta	At-Large
Larry Walker, Perry	At-Large

### District

C. Dean Alford, Conyers	Fourth
Kenneth R. Bernard, Jr., Douglasville	Thirteenth
Lori Durden, Statesboro	Twelfth
Larry R. Ellis, Atlanta	Fifth
Ruthledge A. (Rusty) Griffin, Jr., Valdosta	Eighth
C. Thomas Hopkins, Jr., MD, Griffin	Third
Doreen Stiles Poitevint, Bainbridge	Second
Neil L. Pruitt, Jr., Norcross <b>(Vice Chair)</b>	Eleventh
E. Scott Smith, Ringgold	Fourteenth
Kessel Stelling, Jr., Columbus	Sixth
Benjamin "Ben" J. Tarbutton III, Sandersville	Tenth
Richard L. Tucker, Duluth	Seventh
Don L. Waters, Savannah	First
Philip A. Wilheit, Sr., Gainesville <b>(Chair)</b>	Ninth



Source: University System of Georgia



## University System Institutions

### Research Universities

Georgia Institute of Technology  
Georgia Regents University  
Georgia State University  
University of Georgia

### Comprehensive Universities

Georgia Southern University  
Kennesaw State University  
University of West Georgia  
Valdosta State University

### State Universities

Albany State University  
Armstrong Atlantic State University  
Clayton State University  
Columbus State University  
Fort Valley State University  
Georgia College & State University  
Georgia Southwestern State University  
Savannah State University  
Southern Polytechnic State University  
University of North Georgia

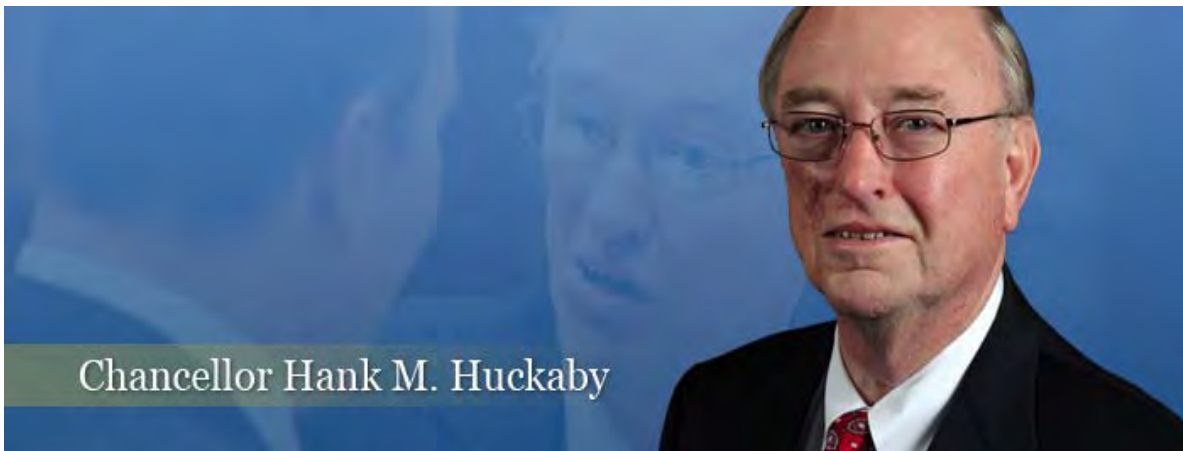
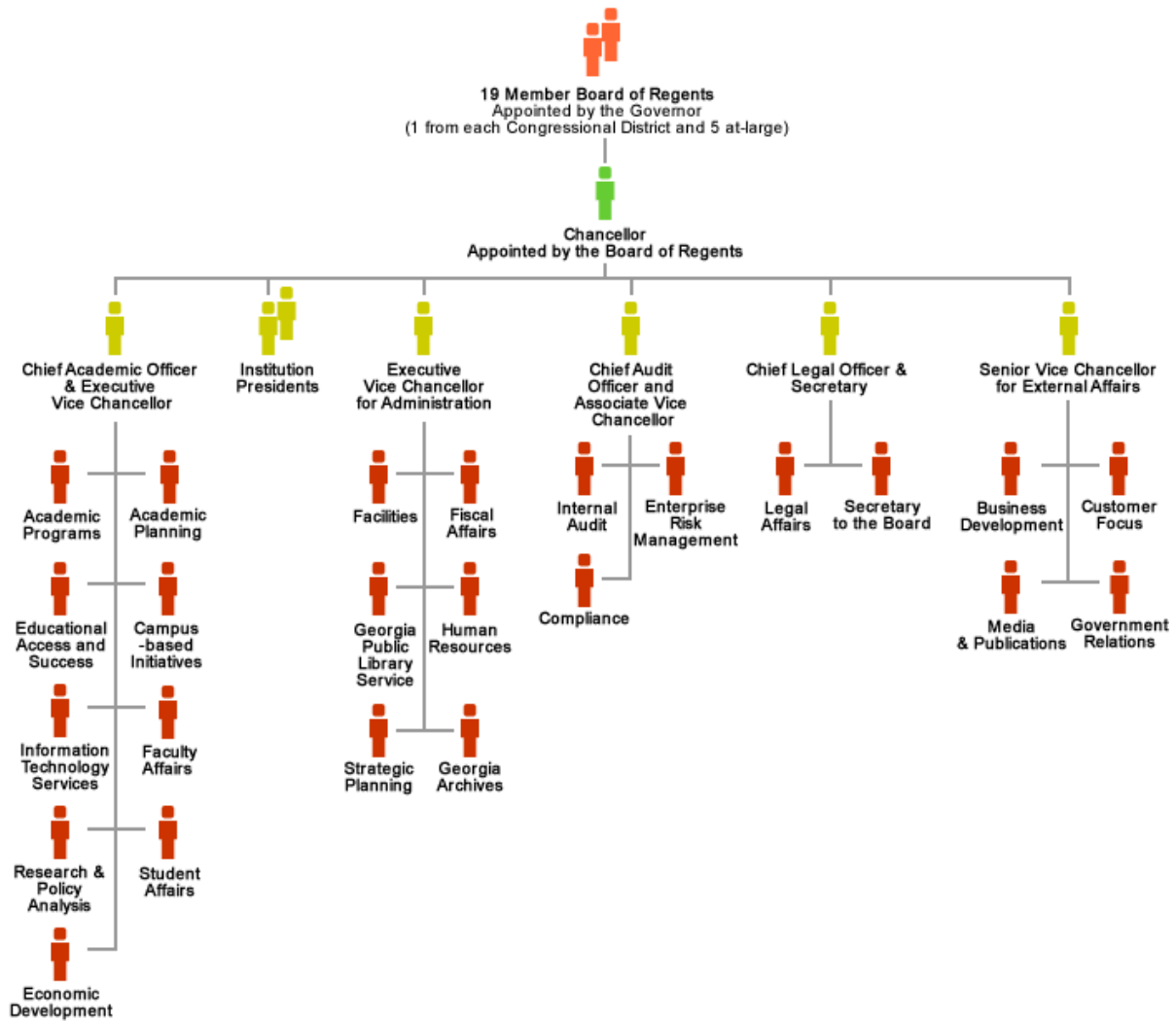
### State Colleges

Abraham Baldwin Agricultural College  
Atlanta Metropolitan State College  
Bainbridge State College  
College of Coastal Georgia  
Dalton State College  
Darton State College  
East Georgia State College  
Georgia Gwinnett College  
Georgia Highlands College  
Georgia Perimeter College  
Gordon State College  
Middle Georgia State College  
South Georgia State College

Source: University System of Georgia



## Board of Regents



Chancellor Hank M. Huckaby

Source: University System of Georgia



## UWG President Kyle Marrero Biography

Dr. Kyle Marrero was appointed the seventh president of the University of West Georgia on July 1, 2013 and has many years of leadership experience in academia and the arts.

Prior to his appointment at UWG, Marrero held the position of vice president for University Advancement at the University of West Florida since August 2009. In that position, he provided executive leadership to advance the mission of the university in the areas of alumni relations, development, marketing, communications and the University of West Florida Foundation.

He was given primary responsibility by the university president to lead the university's effort to achieve the Carnegie Community and Curricular Engagement and Outreach and Partnerships Classification Award for 2015. This goal served as one of the benchmarks of success specifically aligned to engaging in community partnerships that respond to mutual concerns and opportunities and that advance the economy and quality of life in a region.



Under his leadership, the advancement office made significant contributions to a recorded 20 percent increase in enrollment, completed the largest capital campaign in the institution's history by raising \$39.2 million toward a \$35 million fundraising goal, and increased the Foundation investment portfolio from \$45 to \$60 million.

Marrero's background is in music, and prior to his position as vice president for University Advancement, he served as first chair of the Department of Music and then as the director of the School of Fine and Performing Arts at the University of West Florida.

Prior to his work at the University of West Florida, Marrero has taught voice, opera and conducting at a number of institutions in Louisiana, Michigan and Ohio.

He previously served as the artistic director of the Pensacola Opera, a position he held since June 2000. During his tenure, the company was recognized for exponential growth and quality. He developed a comprehensive education and outreach program serving 20,000 school children and 10,000 adults in Northwest Florida and received grants from the National Endowment for the Arts and Opera America for programming and education.

Between 1998 and 2002, Marrero was the artistic director of Opera Southwest in Albuquerque, New Mexico. He has produced and directed an extensive number of operas in this facet of his career. Marrero also has served as a judge for a number of opera and vocal competitions and has performed on stage with a number of opera companies worldwide in principal roles, as well as maintaining an extensive career as a recitalist and performer with symphony orchestras.

He holds both bachelor and master of music degrees from Bowling Green State University, Bowling Green, Ohio, and earned his Doctorate of Musical Arts (D.M.A.) in vocal performance from the University of Michigan, Ann Arbor. Marrero also has studied music education and vocal performance at the University of New Mexico, Albuquerque, and Arizona State University, Tempe, as well as the German language at the Goethe-Institute in Munich, Germany.

Marrero is married to opera performer Jane Redding Marrero, and they have a daughter, Lily.



## University of West Georgia Administration Fall 2013

### General

Dr. Kyle Marrero	President
Dr. Donadrian Rice	Interim Provost and Vice President for Academic Affairs
Mr. James Sutherland	Vice President for Business and Finance
Dr. Scot Lingrell	Vice President for Student Affairs and Enrollment Management
Dr. Bill Estes	Vice President for University Advancement

### Academic Colleges and School

Dr. Randy Hendricks	Dean for the College of Arts and Humanities
Dr. Dianne Hoff	Dean for the College of Education
Dr. Farooq Khan	Dean for the College of Science and Mathematics
Dr. N. Jane McCandless	Dean for the College of Social Sciences
Dr. Melanie Clay	Executive Director for Extended Learning and Dean for e-Core
Dr. Michael Hester	Dean for the Honors College and Trans-Disciplinary Programs
Dr. Faye McIntyre	Dean for the Richards College of Business
Ms. Lorene Flanders	Dean of Libraries
Dr. Kathryn Grams	Dean for the Tanner Health System School of Nursing





## Colleges and School Leaders Fall 2013

### College of Arts and Humanities

Mr. Kevin Shunn	Art
Dr. David Newton	English and Philosophy
Dr. Felix Tweraser	Foreign Languages and Literatures
Dr. Steve Goodson	History
Dr. Kevin Hibbard	Music
Dr. Pauline Gagnon	Theatre

### Richards College of Business

Dr. Ron Colley	Accounting and Finance
Dr. David Boldt	Economics
Dr. Thomas Gainey	Management
Dr. Salil M. Talpade	Marketing and Real Estate

### College of Education

Dr. Michael Garrett	Clinical and Professional Studies
Dr. Stephen Bronack	Educational Technology and Foundations
Dr. Frank Butts	Leadership and Instruction
Dr. Donna Harkins	Learning and Teaching

### College of Science and Mathematics

Dr. Christopher Tabit	Biology
Dr. Spencer Slattery	Chemistry
Dr. Adel Abunawass	Computer Science
Dr. Curtis Hollabaugh	Geosciences
Dr. Bruce Landman	Mathematics
Dr. Bobby E. Powell	Physics

### College of Social Sciences

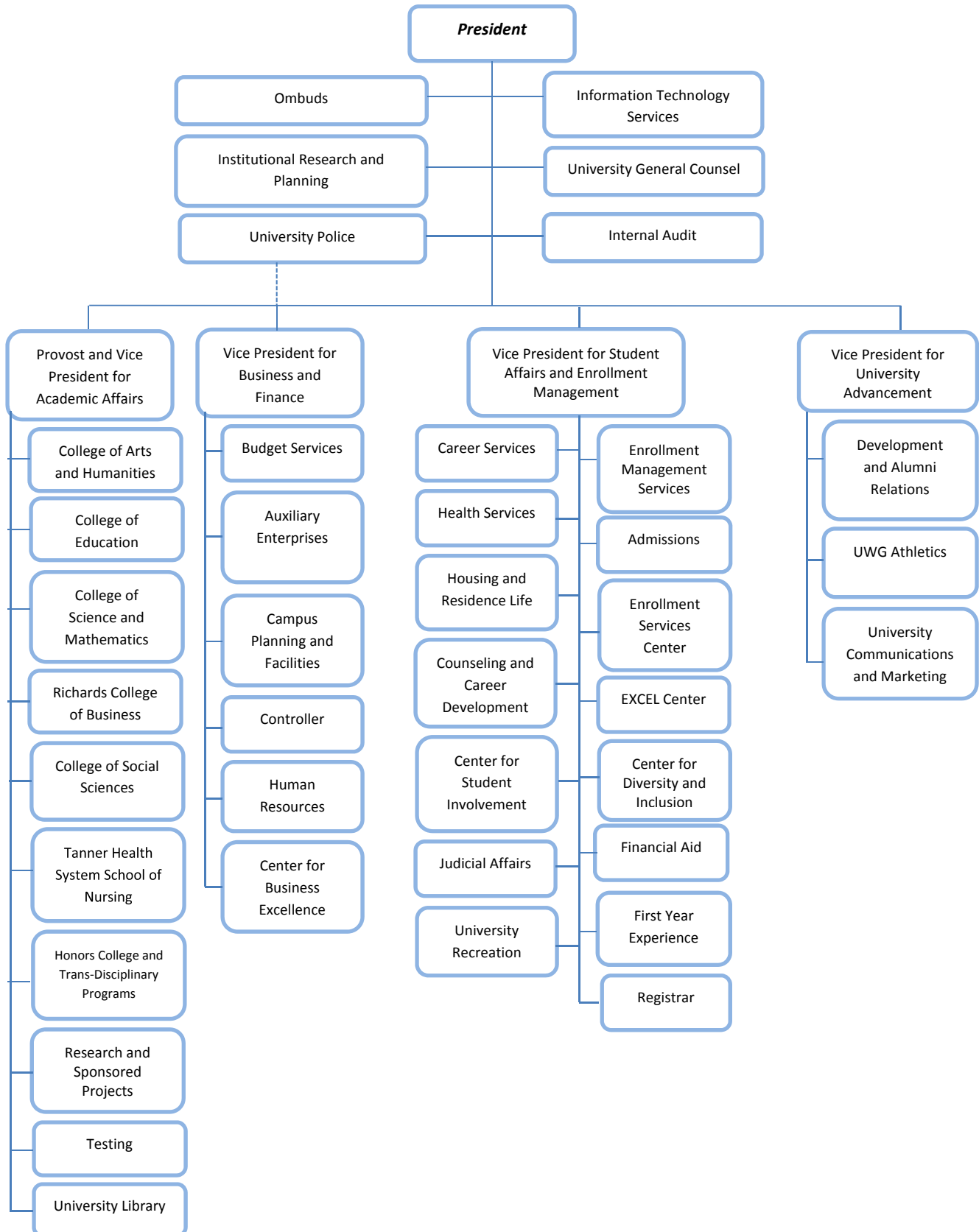
Dr. Lisa Gezon	Anthropology
Dr. David Jenks	Criminology
Dr. Camilla Gant	Mass Communications
Dr. Robert M. Schaefer	Political Science and Planning
Dr. Lisa Osbeck	Psychology
Dr. Paul Luken	Sociology

### Tanner Health System School of Nursing

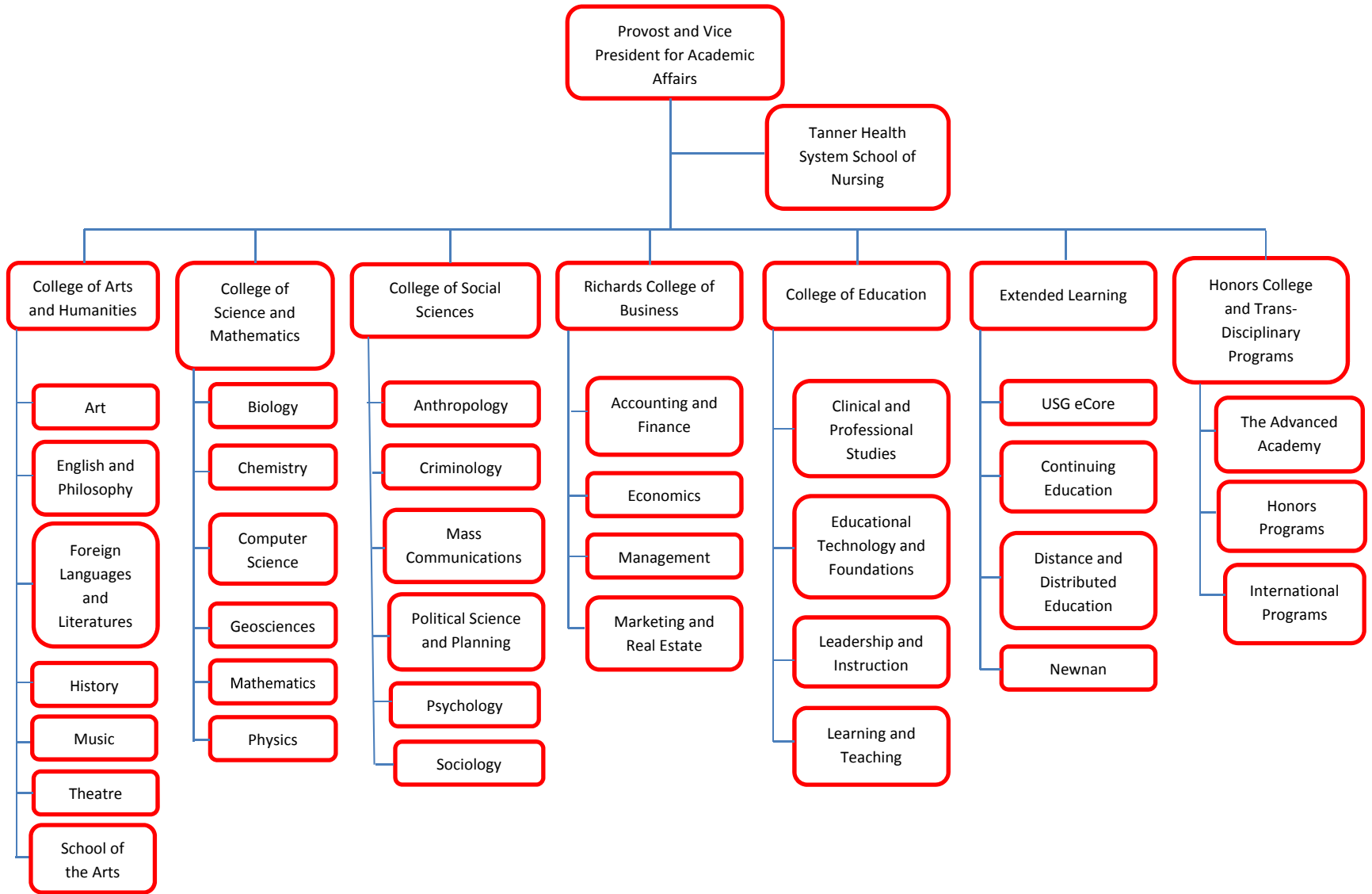
Dr. Kathryn Grams	Nursing
-------------------	---------



## Fall 2013 Administration Organization Chart

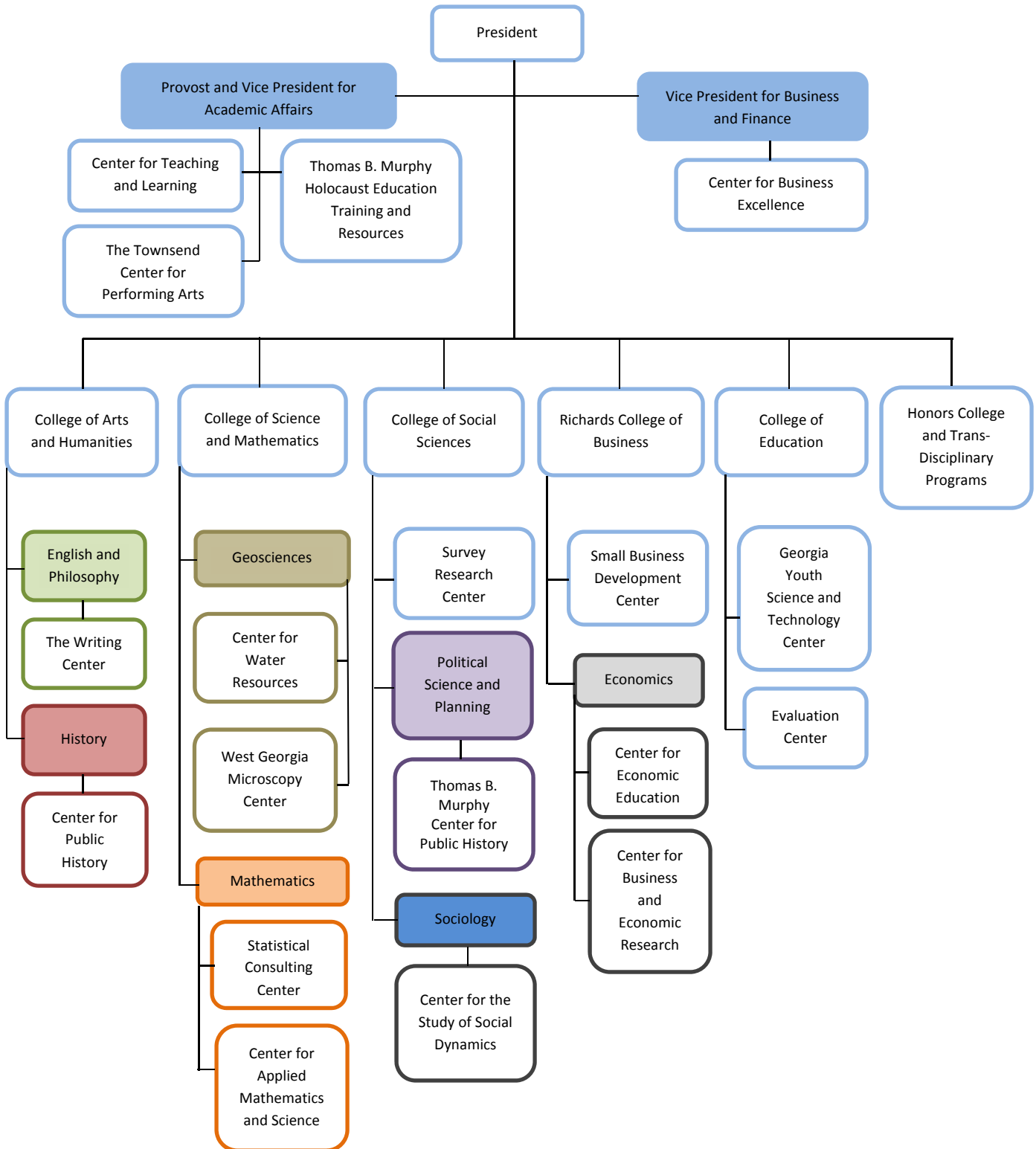


## Colleges, School, and Departments Fall 2013





## Fall 2013 University of West Georgia Centers





## Accreditations and Affiliations

The University of West Georgia is accredited by the Commission on Colleges of the Southern Association of Colleges and Schools to award baccalaureate, master, and doctorate degrees. For questions about accreditation of the University of West Georgia contact the Commission on Colleges at 1866 Southern Lane, Decatur, Georgia 30033-4097 or call 404-679-4501.

The purpose of publishing the Commission's address and contact number is to enable interested constituents (1) to learn about the accreditation status of the institution, (2) to file a third-party comment at the time of the institution's decennial review, or (3) to file a complaint against the institution for alleged non-compliance with a standard or requirements. However, inquiries about the institution, such as admission requirements, financial aid, educational programs, etc., should be addressed directly to the institution and not to the Commission's office.

Accreditations also include the following:

- *The Association to Advance Collegiate Schools of Business (International)*
- *Council for Accreditation of Counseling and Related Educational Programs*
- *Council on Academic Accreditation in Audiology and Speech-Language Pathology of the American Speech-Language Hearing Association*
- *Commission on Collegiate Nursing Education*
- *Computing Accreditation Commission of ABET*
- *National Association of Schools of Arts and Design*
- *National Association of Schools of Music*
- *National Association of Schools of Public Affairs and Administration*
- *National Association of Schools of Theatre*
- *National Council for Accreditation of Teacher Education*

Organizations in which the University holds institutional membership include the American Council on Education, the American Association of State Colleges and Universities, the American Association of Colleges for Teacher Education, the Georgia Association of Colleges, and the National Association for Business Teacher Education, and the National Collegiate Honors Council.

*Source: Institutional Research and Planning*



## Degrees and Majors Offered Fall 2013

### **Bachelor of Arts**

Art  
English\*\*  
Foreign Languages and Literatures\*  
Geography  
Global Studies  
History\*\*  
International Economic Affairs  
Mathematics  
Philosophy  
Political Science  
Psychology  
Theatre

### **Bachelor of Business Administration**

Accounting  
Economics  
Finance  
Management  
Management Information Systems  
Marketing  
Real Estate

### **Bachelors of Fine Arts**

Art\*

### **Bachelor of Music**

Composition  
Music Education\*  
Performance  
Performance, Emphasis in Jazz Studies  
Performance, Emphasis in Piano Pedagogy

### **Bachelor of Science**

Anthropology  
Biology\*\*  
Computer Science  
Criminology  
Earth Science\*\*  
Economics\*\*  
Environmental Science  
Environmental Studies  
Geography  
Geology  
Mass Communications  
Mathematics\*\*  
Physics\*\*  
Political Science  
Sociology  
Sport Management

### **Bachelor of Science in Chemistry**

### **Bachelor of Science in Education**

Early Childhood Education (P-5)  
Physical Education (P-12)  
Special Education - General Curriculum (P-12)  
Speech-Language Pathology (P-12)

### **Bachelor of Science in Nursing**

### **Master of Arts**

Criminology  
English  
History  
Psychology  
Sociology

### **Master of Art in Teaching**

Secondary Education  
Biology  
Broad Field Science  
Business Education  
Chemistry  
Economics  
English  
History  
Mathematics  
Physics  
Political Science



**Master of Business Administration**

**Master of Education**

- Business Education
- Early Childhood Education
- Media
  - Instructional Technology
  - Media Specialist
- Professional Counseling
  - College Student Affairs
  - Community Counseling
  - School Counseling
- Reading Education
- Secondary Education
  - Biology
  - Broad Field Science
  - Earth Science
  - English
  - History
  - Mathematics
- Special Education - General Curriculum
- Speech-Language Pathology

**Master of Music**

- Music Education
- Performance

**Master of Professional Accounting**

**Master of Public Administration**

**Master of Science**

- Applied Computer Science
- Biology
- Mathematics

**Master of Science in Nursing**

**Master in Urban and Regional Planning**

**Specialist in Education**

- Early Childhood Education
- Educational Leadership
- Media
  - Instructional Technology
  - Media Specialist
- Professional Counseling and Supervision
- Special Education

**Doctor of Education**

- Professional Counseling
- School Improvement

**Ed.D. in Nursing Education**

**Doctor of Philosophy in Psychology: Consciousness and Society**

**Post-Master's Certificate**

- Nursing Health Systems Leadership
- Nursing Education

**Non-Degree Initial Certification Programs in Education**

- Art (P-12)
- Early Childhood Education (P-5)
- French (P-12)
- Media Specialist (P-12)
- Music (P-12)
- Spanish (P-12)

**Non-Degree Initial Certification Programs and Endorsement in Education**

- Educational Leadership
- K-5 Mathematics Endorsement
- Media Specialist
- Reading Endorsement

**Non-Degree Add-On Certification Programs and Endorsements in Education**

- Educational Leadership
- K-5 Mathematics Endorsement
- Media Specialist
- Reading Endorsement

*\*Certification obtainable in grades P-12*

*\*\*Certification obtainable in grades 6-12*

Source: Undergraduate Catalog 2013-2014





## Historical Information





## Total Enrollment and Student Credit Hours (SCH) by Course Level Fiscal Years 2008 – 2014

Fiscal Years	Lower Level			Upper Level			Graduate Level			Total	
	Head Count	SCH	Avg. SCH	Head Count	SCH	Avg. SCH	Head Count	SCH	Avg. SCH	SCH	FTE*
<b>2007-2008</b>											
Summer 2007	1,581	14,313	9.1	2,177	11,689	5.4	1,444	8,101	5.6	34,103	2,976
Fall 2007	5,490	77,852	14.2	3,352	36,101	10.8	1,835	9,745	5.3	123,698	9,462
Spring 2008	4,693	71,303	15.2	3,598	36,092	10.0	1,917	10,592	5.5	117,987	8,948
<b>Total</b>		<b>163,468</b>			<b>83,882</b>			<b>28,438</b>		<b>275,788</b>	<b>21,386</b>
<b>2008-2009</b>											
Summer 2008	1,741	15,706	9.0	2,362	13,262	5.6	1,695	9,941	5.9	38,909	3,412
Fall 2008	5,714	82,945	14.5	3,516	37,266	10.6	2,022	11,078	5.5	131,289	9,989
Spring 2009	4,865	73,199	15.0	3,755	39,434	10.5	1,910	10,362	5.4	122,995	9,274
<b>Total</b>		<b>171,850</b>			<b>89,962</b>			<b>31,381</b>		<b>293,193</b>	<b>22,675</b>
<b>2009-2010</b>											
Summer 2009	1,766	16,619	9.4	2,567	14,393	5.6	1,567	8,805	5.6	39,817	3,483
Fall 2009	5,784	85,052	14.7	3,838	40,609	10.6	1,878	10,531	5.6	136,192	10,309
Spring 2010	5,000	75,042	15.0	4,078	42,292	10.4	1,748	9,838	5.6	127,172	9,622
<b>Total</b>		<b>176,713</b>			<b>97,294</b>			<b>29,174</b>		<b>303,181</b>	<b>23,414</b>
<b>2010-2011</b>											
Summer 2010	1,864	17,668	9.5	2,666	14,966	5.6	1,296	7,411	5.7	40,045	3,461
Fall 2010	5,636	84,024	14.9	4,071	41,753	10.3	1,576	9,181	5.8	134,958	10,213
Spring 2011	4,815	74,145	15.4	4,261	42,089	9.9	1,475	8,803	6.0	125,037	9,451
<b>Total</b>		<b>175,837</b>			<b>98,808</b>			<b>25,395</b>		<b>300,040</b>	<b>23,125</b>
<b>2011-2012</b>											
Summer 2011	1,831	18,778	10.3	2,852	15,131	5.3	1,190	6,858	5.8	40,767	3,502
Fall 2011	5,795	84,167	14.5	4,234	44,491	10.5	1,617	9,888	6.1	138,546	10,575
Spring 2012	4,855	73,918	15.2	4,433	44,902	10.1	1,645	10,295	6.3	129,115	9,820
<b>Total</b>		<b>176,863</b>			<b>104,524</b>			<b>27,041</b>		<b>308,428</b>	<b>23,898</b>
<b>2012-2013</b>											
Summer 2012	1,487	15,011	10.1	2,546	13,476	5.3	1,156	6,802	5.9	35,289	3,067
Fall 2012	5,803	83,222	14.3	4,160	44,309	10.7	1,806	11,689	6.5	139,220	10,639
Spring 2013	4,823	72,985	15.1	4,354	44,340	10.2	1,746	11,416	6.5	128,741	9,834
<b>Total</b>		<b>171,218</b>			<b>102,125</b>			<b>29,907</b>		<b>303,250</b>	<b>23,539</b>
<b>2013-2014</b>											
Summer 2013	1,326	12,406	9.4	2,313	12,008	5.2	1,252	7,516	6.0	31,930	2,801
Fall 2013	5,929	85,373	14.4	4,030	44,276	11.0	1,970	13,201	6.7	142,850	10,846
Spring 2014	4,943	75,889	15.4	4,393	44,714	10.2	1,843	12,261	6.7	132,864	10,033
<b>Total</b>		<b>173,668</b>			<b>100,998</b>			<b>32,978</b>		<b>307,644</b>	<b>23,680</b>

\*FTE for all years represents the most current definition set by the Board of Regents (Total full-time undergraduate students taking 12 or more hours + total full-time graduate students taking 9 or more hours) + (Total part-time undergraduate credit hours/12 + total part-time graduate credit hours/9) and totals are rounded to the nearest whole number.

Source: Institutional Research and Planning



## Undergraduate and Graduate Students Total FTE\* Fiscal Years 2008 - 2014

<i>Fiscal Years</i>	<i>Undergraduate</i>	<i>Graduate</i>	<i>Total FTE*</i>
<b>2007-2008</b>			
Summer 2007	2,031	945	2,976
Fall 2007	8,260	1,202	9,462
Spring 2008	7,673	1,275	8,948
<b>Total</b>	<b>17,964</b>	<b>3,422</b>	<b>21,386</b>
<b>2008-2009</b>			
Summer 2008	2,282	1,130	3,412
Fall 2008	8,650	1,339	9,989
Spring 2009	8,000	1,274	9,274
<b>Total</b>	<b>18,932</b>	<b>3,743</b>	<b>22,675</b>
<b>2009-2010</b>			
Summer 2009	2,453	1,030	3,483
Fall 2009	9,022	1,287	10,309
Spring 2010	8,412	1,210	9,622
<b>Total</b>	<b>19,887</b>	<b>3,527</b>	<b>23,414</b>
<b>2010-2011</b>			
Summer 2010	2,589	872	3,461
Fall 2010	9,085	1,128	10,213
Spring 2011	8,390	1,061	9,451
<b>Total</b>	<b>20,064</b>	<b>3,061</b>	<b>23,125</b>
<b>2011-2012</b>			
Summer 2011	2,710	792	3,502
Fall 2011	9,382	1,193	10,575
Spring 2012	8,614	1,206	9,820
<b>Total</b>	<b>20,707</b>	<b>3,191</b>	<b>23,898</b>
<b>2012-2013</b>			
Summer 2012	2,292	775	3,067
Fall 2012	9,315	1,324	10,639
Spring 2013	8,540	1,294	9,834
<b>Total</b>	<b>20,147</b>	<b>3,392</b>	<b>23,539</b>
<b>2013-2014</b>			
Summer 2013	1,959	842	2,801
Fall 2013	9,376	1,469	10,846
Spring 2014	8,670	1,363	10,033
<b>Total</b>	<b>20,006</b>	<b>3,674</b>	<b>23,680</b>

\*FTE for all years represents the most current definition set by the Board of Regents (Total full-time undergraduate students taking 12 or more hours + total full-time graduate students taking 9 or more hours) + (Total part-time undergraduate credit hours/12 + total part-time graduate credit hours/9) and totals are rounded to the nearest whole number.

Source: Institutional Research and Planning



**College of Arts and Humanities  
Student Credit Hours by Course Level  
Fiscal Years 2008 – 2014**

<i>Fiscal Years</i>	<i>Lower Level</i>	<i>Upper Level</i>	<i>Graduate Level</i>	<i>Total</i>
<b>2007-2008</b>				
Summer 2007	4,896	1,406	294	6,596
Fall 2007	24,907	5,003	475	30,385
Spring 2008	24,774	5,313	513	30,600
<b>Total</b>	<b>54,577</b>	<b>11,722</b>	<b>1,282</b>	<b>67,581</b>
<b>2008-2009</b>				
Summer 2008	4,965	1,658	293	6,916
Fall 2008	27,703	4,998	500	33,201
Spring 2009	25,486	5,208	491	31,185
<b>Total</b>	<b>58,154</b>	<b>11,864</b>	<b>1,284</b>	<b>71,302</b>
<b>2009-2010</b>				
Summer 2009	5,497	1,334	248	7,079
Fall 2009	29,595	4,822	551	34,968
Spring 2010	26,133	5,203	531	31,867
<b>Total</b>	<b>61,225</b>	<b>11,359</b>	<b>1,330</b>	<b>73,914</b>
<b>2010-2011</b>				
Summer 2010	5,555	1,714	250	7,519
Fall 2010	29,252	5,004	592	34,848
Spring 2011	26,572	5,103	533	32,208
<b>Total</b>	<b>61,379</b>	<b>11,821</b>	<b>1,375</b>	<b>74,575</b>
<b>2011-2012</b>				
Summer 2011	5,550	1,745	243	7,538
Fall 2011	29,552	5,657	493	35,702
Spring 2012	25,960	5,536	551	32,047
<b>Total</b>	<b>61,062</b>	<b>12,938</b>	<b>1,287</b>	<b>75,287</b>
<b>2012-2013</b>				
Summer 2012	4,226	1,389	200	5,815
Fall 2012	28,958	4,824	646	34,428
Spring 2013	25,812	5,072	652	31,536
<b>Total</b>	<b>58,996</b>	<b>11,285</b>	<b>1,498</b>	<b>71,779</b>
<b>2013-2014</b>				
Summer 2013	3,224	1,239	274	4,737
Fall 2013	29,231	4,542	589	34,362
Spring 2014	27,150	4,708	498	32,356
<b>Total</b>	<b>59,605</b>	<b>10,489</b>	<b>1,361</b>	<b>71,455</b>

Note: UWG 1101, XIDS, and other interdisciplinary credit hours are attributed to individual colleges based on course instructor.

Source: Institutional Research and Planning



**College of Education**  
**Student Credit Hours by Course Level**  
**Fiscal Years 2008 – 2014**

<i>Fiscal Years</i>	<i>Lower Level</i>	<i>Upper Level</i>	<i>Graduate Level</i>	<i>Total</i>
<b>2007-2008</b>				
Summer 2007	1,119	1,135	6,680	8,934
Fall 2007	3,993	8,548	6,982	19,523
Spring 2008	3,759	8,158	7,549	19,466
<b>Total</b>	<b>8,871</b>	<b>17,841</b>	<b>21,211</b>	<b>47,923</b>
<b>2008-2009</b>				
Summer 2008	1,299	1,303	8,205	10,807
Fall 2008	4,127	8,810	7,822	20,759
Spring 2009	4,179	9,403	6,820	20,402
<b>Total</b>	<b>9,605</b>	<b>19,516</b>	<b>22,847</b>	<b>51,968</b>
<b>2009-2010</b>				
Summer 2009	1,645	1,703	6,948	10,296
Fall 2009	4,374	10,051	6,811	21,236
Spring 2010	4,071	9,902	6,231	20,204
<b>Total</b>	<b>10,090</b>	<b>21,656</b>	<b>19,990</b>	<b>51,736</b>
<b>2010-2011</b>				
Summer 2010	1,411	1,855	5,716	8,982
Fall 2010	4,754	10,630	5,830	21,214
Spring 2011	4,034	10,345	5,593	19,972
<b>Total</b>	<b>10,199</b>	<b>22,830</b>	<b>17,139</b>	<b>50,168</b>
<b>2011-2012</b>				
Summer 2011	1,385	1,611	5,438	8,434
Fall 2011	4,011	10,796	6,370	21,177
Spring 2012	3,923	10,522	6,535	20,980
<b>Total</b>	<b>9,319</b>	<b>22,929</b>	<b>18,343</b>	<b>50,591</b>
<b>2012-2013</b>				
Summer 2012	1,016	1,591	5,339	7,946
Fall 2012	3,621	10,223	7,248	21,092
Spring 2013	3,242	10,288	7,152	20,682
<b>Total</b>	<b>7,879</b>	<b>22,102</b>	<b>19,739</b>	<b>49,720</b>
<b>2013-2014</b>				
Summer 2013	576	1,317	5,878	7,771
Fall 2013	3,480	9,535	8,194	21,209
Spring 2014	3,085	9,557	7,578	20,220
<b>Total</b>	<b>7,141</b>	<b>20,409</b>	<b>21,650</b>	<b>49,200</b>

Note: UWG 1101, XIDS, and other interdisciplinary credit hours are attributed to individual colleges based on course instructor.

Source: Institutional Research and Planning



**College of Science and Mathematics  
Student Credit Hours by Course Level  
Fiscal Years 2008 – 2014**

<i>Fiscal Years</i>	<i>Lower Level</i>	<i>Upper Level</i>	<i>Graduate Level</i>	<i>Total</i>
<b>2007-2008</b>				
Summer 2007	4,071	1,089	235	5,395
Fall 2007	27,902	4,468	496	32,866
Spring 2008	24,304	4,499	470	29,273
<b>Total</b>	<b>56,277</b>	<b>10,056</b>	<b>1,201</b>	<b>67,534</b>
<b>2008-2009</b>				
Summer 2008	5,093	1,070	278	6,441
Fall 2008	27,817	5,246	458	33,521
Spring 2009	25,840	5,400	499	31,739
<b>Total</b>	<b>58,750</b>	<b>11,716</b>	<b>1,235</b>	<b>71,701</b>
<b>2009-2010</b>				
Summer 2009	5,555	1,294	290	7,139
Fall 2009	28,592	5,612	549	34,753
Spring 2010	25,567	5,988	514	32,069
<b>Total</b>	<b>59,714</b>	<b>12,894</b>	<b>1,353</b>	<b>73,961</b>
<b>2010-2011</b>				
Summer 2010	6,146	1,619	202	7,967
Fall 2010	28,322	5,322	449	34,093
Spring 2011	25,122	5,731	498	31,351
<b>Total</b>	<b>59,590</b>	<b>12,672</b>	<b>1,149</b>	<b>73,411</b>
<b>2011-2012</b>				
Summer 2011	6,978	1,480	268	8,726
Fall 2011	28,981	6,094	476	35,551
Spring 2012	25,540	6,165	570	32,275
<b>Total</b>	<b>61,499</b>	<b>13,739</b>	<b>1,314</b>	<b>76,552</b>
<b>2012-2013</b>				
Summer 2012	5,668	1,315	294	7,277
Fall 2012	27,421	5,945	601	33,967
Spring 2013	24,921	5,410	523	30,854
<b>Total</b>	<b>58,010</b>	<b>12,670</b>	<b>1,418</b>	<b>72,098</b>
<b>2013-2014</b>				
Summer 2013	4,859	893	270	6,022
Fall 2013	27,717	5,449	831	33,997
Spring 2014	25,358	5,148	672	31,178
<b>Total</b>	<b>57,934</b>	<b>11,490</b>	<b>1,773</b>	<b>71,197</b>

Note: UWG 1101, XIDS, and other interdisciplinary credit hours are attributed to individual colleges based on course instructor.

Source: Institutional Research and Planning



**College of Social Sciences  
Student Credit Hours by Course Level  
Fiscal Years 2008 - 2014**

<i>Fiscal Years</i>	<i>Lower Level</i>	<i>Upper Level</i>	<i>Graduate Level</i>	<i>Total</i>
<b>2007-2008</b>				
Summer 2007	2,016	2,712	249	4,977
Fall 2007	14,605	6,911	838	22,354
Spring 2008	12,161	6,781	827	19,769
<b>Total</b>	<b>28,782</b>	<b>16,404</b>	<b>1,914</b>	<b>47,100</b>
<b>2008-2009</b>				
Summer 2008	1,953	2,535	346	4,834
Fall 2008	15,976	6,188	844	23,008
Spring 2009	11,106	6,712	909	18,727
<b>Total</b>	<b>29,035</b>	<b>15,435</b>	<b>2,099</b>	<b>46,569</b>
<b>2009-2010</b>				
Summer 2009	2,132	2,594	276	5,002
Fall 2009	14,392	6,761	1,058	22,211
Spring 2010	12,427	7,681	1,007	21,115
<b>Total</b>	<b>28,951</b>	<b>17,036</b>	<b>2,341</b>	<b>48,328</b>
<b>2010-2011</b>				
Summer 2010	2,689	2,691	184	5,564
Fall 2010	13,851	7,305	1,072	22,228
Spring 2011	12,859	7,301	1,025	21,185
<b>Total</b>	<b>29,399</b>	<b>17,297</b>	<b>2,281</b>	<b>48,977</b>
<b>2011-2012</b>				
Summer 2011	3,015	3,447	201	6,663
Fall 2011	14,266	7,751	1,247	23,264
Spring 2012	12,682	9,056	1,237	22,975
<b>Total</b>	<b>29,963</b>	<b>20,254</b>	<b>2,685</b>	<b>52,902</b>
<b>2012-2013</b>				
Summer 2012	2,502	3,528	322	6,352
Fall 2012	14,834	9,218	1,525	25,577
Spring 2013	12,508	9,982	1,335	23,825
<b>Total</b>	<b>29,844</b>	<b>22,728</b>	<b>3,182</b>	<b>55,754</b>
<b>2013-2014</b>				
Summer 2013	1,908	3,603	296	5,807
Fall 2013	16,591	9,947	1,481	28,019
Spring 2014	13,966	11,031	1,338	26,335
<b>Total</b>	<b>32,465</b>	<b>24,581</b>	<b>3,115</b>	<b>60,161</b>

Note: UWG 1101, XIDS, and other interdisciplinary credit hours are attributed to individual colleges based on course instructor.

Source: *Institutional Research and Planning*



**Richards College of Business**  
**Student Credit Hours by Course Level**  
**Fiscal Years 2008 – 2014**

<i>Fiscal Years</i>	<i>Lower Level</i>	<i>Upper Level</i>	<i>Graduate Level</i>	<i>Total</i>
<b>2007-2008</b>				
Summer 2007	1,632	4,743	643	7,018
Fall 2007	4,827	8,723	785	14,335
Spring 2008	5,205	8,989	1,130	15,324
<b>Total</b>	<b>11,664</b>	<b>22,455</b>	<b>2,558</b>	<b>36,677</b>
<b>2008-2009</b>				
Summer 2008	1,886	5,919	819	8,624
Fall 2008	5,663	9,272	1,237	16,172
Spring 2009	5,422	9,982	1,478	16,882
<b>Total</b>	<b>12,971</b>	<b>25,173</b>	<b>3,534</b>	<b>41,678</b>
<b>2009-2010</b>				
Summer 2009	1,526	6,148	1,035	8,709
Fall 2009	5,516	10,420	1,317	17,253
Spring 2010	5,418	10,350	1,390	17,158
<b>Total</b>	<b>12,460</b>	<b>26,918</b>	<b>3,742</b>	<b>43,120</b>
<b>2010-2011</b>				
Summer 2010	1,418	5,703	1,059	8,180
Fall 2010	5,366	10,105	1,077	16,548
Spring 2011	4,924	10,234	1,001	16,159
<b>Total</b>	<b>11,708</b>	<b>26,042</b>	<b>3,137</b>	<b>40,887</b>
<b>2011-2012</b>				
Summer 2011	1,754	5,447	708	7,909
Fall 2011	5,540	10,644	828	17,012
Spring 2012	5,225	10,256	1,042	16,523
<b>Total</b>	<b>12,519</b>	<b>26,347</b>	<b>2,578</b>	<b>41,444</b>
<b>2012-2013</b>				
Summer 2012	1,213	4,419	642	6,274
Fall 2012	5,858	10,733	882	17,473
Spring 2013	5,798	10,492	1,041	17,331
<b>Total</b>	<b>12,869</b>	<b>25,644</b>	<b>2,565</b>	<b>41,078</b>
<b>2013-2014</b>				
Summer 2013	1,297	3,983	738	6,018
Fall 2013	5,777	11,161	1,155	18,093
Spring 2014	5,706	11,151	1,380	18,237
<b>Total</b>	<b>12,780</b>	<b>26,295</b>	<b>3,273</b>	<b>42,348</b>

Note: UWG 1101, XIDS, and other interdisciplinary credit hours are attributed to individual colleges based on course instructor.

Source: Institutional Research and Planning



**Tanner Health System School of Nursing  
Student Credit Hours by Course Level  
Fiscal Years 2008 – 2014**

<i>Fiscal Years</i>	<i>Lower Level</i>	<i>Upper Level</i>	<i>Graduate Level</i>	<i>Total</i>
<b>2007-2008</b>				
Summer 2007	243	604		847
Fall 2007		2,448	169	2,617
Spring 2008		2,352	103	2,455
<b>Total</b>	<b>243</b>	<b>5,404</b>	<b>272</b>	<b>5,919</b>
<b>2008-2009</b>				
Summer 2008	333	777		1,110
Fall 2008		2,752	217	2,969
Spring 2009		2,728	165	2,893
<b>Total</b>	<b>333</b>	<b>6,257</b>	<b>382</b>	<b>6,972</b>
<b>2009-2010</b>				
Summer 2009		1,320	8	1,328
Fall 2009	336	2,943	245	3,524
Spring 2010		3,168	165	3,333
<b>Total</b>	<b>336</b>	<b>7,431</b>	<b>418</b>	<b>8,185</b>
<b>2010-2011</b>				
Summer 2010		1,384		1,384
Fall 2010	360	3,387	161	3,908
Spring 2011		3,375	153	3,528
<b>Total</b>	<b>360</b>	<b>8,146</b>	<b>314</b>	<b>8,820</b>
<b>2011-2012</b>				
Summer 2011		1,401		1,401
Fall 2011	385	3,549	474	4,408
Spring 2012		3,367	360	3,727
<b>Total</b>	<b>385</b>	<b>8,317</b>	<b>834</b>	<b>9,536</b>
<b>2012-2013</b>				
Summer 2012	330	1,234	5	1,569
Fall 2012	312	3,366	787	4,465
Spring 2013	12	3,096	713	3,821
<b>Total</b>	<b>654</b>	<b>7,696</b>	<b>1,505</b>	<b>9,855</b>
<b>2013-2014</b>				
Summer 2013	360	973	60	1,393
Fall 2013	387	3,642	951	4,980
Spring 2014	24	3,119	795	3,938
<b>Total</b>	<b>771</b>	<b>7,734</b>	<b>1,806</b>	<b>10,311</b>

Note: UWG 1101, XIDS, and other interdisciplinary credit hours are attributed to individual colleges based on course instructor.

Source: Institutional Research and Planning



**University of West Georgia - Newnan  
Student Credit Hours by Course Level  
Fiscal Years 2008 – 2014**

<i>Fiscal Years</i>	<i>Lower Level</i>	<i>Upper Level</i>	<i>Graduate Level</i>	<i>Total</i>
<b>2007-2008</b>				
Summer 2007	132	462	987	1,581
Fall 2007	858	678	1,095	2,631
Spring 2008	863	716	1,293	2,872
<b>Total</b>	<b>1,853</b>	<b>1,856</b>	<b>3,375</b>	<b>7,084</b>
<b>2008-2009</b>				
Summer 2008	276	642	1,452	2,370
Fall 2008	1,038	1,227	1,719	3,984
Spring 2009	765	1,234	1,485	3,484
<b>Total</b>	<b>2,079</b>	<b>3,103</b>	<b>4,656</b>	<b>9,838</b>
<b>2009-2010</b>				
Summer 2009	477	793	849	2,119
Fall 2009	1,077	1,871	573	3,521
Spring 2010	880	1,431	672	2,983
<b>Total</b>	<b>2,434</b>	<b>4,095</b>	<b>2,094</b>	<b>8,623</b>
<b>2010-2011</b>				
Summer 2010	572	812	768	2,152
Fall 2010	1,090	1,894	582	3,566
Spring 2011	842	1,604	603	3,049
<b>Total</b>	<b>2,504</b>	<b>4,310</b>	<b>1,953</b>	<b>8,767</b>
<b>2011-2012</b>				
Summer 2011	588	920	444	1,952
Fall 2011	1,457	2,149	312	3,918
Spring 2012	1,089	1,781	276	3,146
<b>Total</b>	<b>3,134</b>	<b>4,850</b>	<b>1,032</b>	<b>9,016</b>
<b>2012-2013</b>				
Summer 2012	459	897	39	1,395
Fall 2012	1,376	1,768	309	3,453
Spring 2013	1,051	1,706	267	3,024
<b>Total</b>	<b>2,886</b>	<b>4,371</b>	<b>615</b>	<b>7,872</b>
<b>2013-2014</b>				
Summer 2013	468	705	111	1,284
Fall 2013	1,384	1,914	273	3,571
Spring 2014	921	1,353	195	2,469
<b>Total</b>	<b>2,773</b>	<b>3,972</b>	<b>579</b>	<b>7,324</b>

Source: Institutional Research and Planning



## Degrees and Awards Conferred Fiscal Years 2004 -2013

Fiscal Years	2004	2005	2006	2007	2008	2009	2010	2011	2012	2013
<b>Bachelor of Arts</b>										
Anthropology	11	4	4	5	9	9	10	11	3	-
Art	2	1	2	2	4	4	2	1	5	1
Chemistry	11	9	9	11	11	7	8	10	7	15
Chemistry/Secondary Education	-	1	3	2	-	2	1	-	-	-
English	19	30	45	31	35	27	36	36	53	43
Foreign Languages								5	9	13
French	2	3	5	1	2	2	-	-	-	-
Geography	1	1	-	-	3	1	2	2	2	2
German	1	-	-	-	1	4	3	1	-	-
Global Studies	1	-	2	1	2	1	-	2	2	5
History	19	17	28	32	33	38	34	36	37	37
International Economic Affairs	8	11	2	3	3	4	5	5	3	6
Mass Communications	37	38	49	40	47	40	48	46	53	12
Mathematics	-	-	1	1	-	-	-	-	-	1
Philosophy	1	5	5	4	4	8	14	9	9	11
Political Science	8	9	4	3	8	5	9	5	3	6
Psychology	78	73	64	88	75	92	82	89	109	94
Sociology	1	1	-	-	-	-	-	-	-	-
Spanish	-	6	6	6	12	6	7	4	-	-
Speech and Theatre Arts	2	-	-	-	-	-	-	-	-	-
Theatre	2	6	5	2	4	8	7	8	3	11
<i>Total</i>	<i>204</i>	<i>215</i>	<i>234</i>	<i>232</i>	<i>253</i>	<i>258</i>	<i>268</i>	<i>270</i>	<i>298</i>	<i>257</i>
<b>Bachelor of Business Administration</b>										
Accounting	45	35	46	40	38	58	68	76	69	72
Technology Support Systems	3	4	2	1	-	-	1	-	-	-
Business Information Systems	40	43	-	-	-	-	-	-	-	-
Economics	2	5	8	4	4	2	5	5	10	4
Finance	28	33	33	17	37	37	42	41	63	54
Management	87	86	103	104	88	120	118	126	117	110
Management Information Systems			31	24	16	14	25	14	25	20
Marketing	87	71	91	84	81	87	100	90	96	72
Real Estate	11	19	16	17	19	14	10	4	3	2
<i>Total</i>	<i>303</i>	<i>296</i>	<i>330</i>	<i>291</i>	<i>283</i>	<i>332</i>	<i>369</i>	<i>356</i>	<i>383</i>	<i>334</i>
<b>Bachelor of Fine Arts</b>										
	29	36	35	30	26	37	38	31	32	26
<b>Bachelor of Science in Chemistry</b>										
	4	4	10	11	15	13	12	11	12	13



## Degrees and Awards Conferred Continued

Fiscal Years	2004	2005	2006	2007	2008	2009	2010	2011	2012	2013
<b>Bachelor of Science in Education</b>										
Business Education	8	3	6	7	5	3	7	7	5	2
Early Childhood Education	129	164	160	160	191	191	199	190	189	178
Middle Grades Education	19	25	29	21	19	37	17	23	20	29
Physical Education	27	27	19	14	5	21	26	27	19	21
Secondary Social Science Education	2	3	-	-	-	-	-	-	-	-
Special Education	29	17	22	25	4	-	6	18	19	33
Speech Language Pathology	12	17	12	17	18	15	24	23	30	41
<i>Total</i>	<i>226</i>	<i>256</i>	<i>248</i>	<i>244</i>	<i>242</i>	<i>267</i>	<i>279</i>	<i>288</i>	<i>282</i>	<i>304</i>
<b>Bachelor of Music</b>										
Elective Studies in Business-Music	-	1	-	-	-	-	-	-	-	1
Music Education	5	4	6	6	5	8	9	10	11	1
Performance	4	2	3	1	1	3	5	1	2	4
Theory and Composition	1	-	-	-	-	-	-	-	-	1
<i>Total</i>	<i>10</i>	<i>7</i>	<i>9</i>	<i>7</i>	<i>6</i>	<i>11</i>	<i>14</i>	<i>11</i>	<i>13</i>	<i>7</i>
<b>Bachelor of Science</b>										
Anthropology									17	14
Biology	56	41	44	65	70	76	85	76	106	114
Biology/Secondary Education	1	-	2	4	-	1	5	5	6	-
Computer Science	8	14	7	7	11	5	12	22	16	21
Criminology	38	35	36	28	41	43	42	48	40	67
Earth Science-Secondary Education							1	-	3	-
Economics	12	7	14	7	16	11	17	17	13	24
Economics-Secondary Education	2	-	-	-	-	1	1	2	3	-
Environmental Science	3	1	1	3	1	-	-	3	4	4
Environmental Studies	-	2	3	3	1	2	4	3	4	5
Geography	3	1	2	2	7	3	1	10	6	8
Mass Communications										51
Geology	2	5	8	5	11	8	7	16	11	5
Mathematics	9	16	7	15	12	13	13	16	14	16
Physics	5	2	4	3	7	6	4	3	4	7
Physics/Secondary Education	-	-	-	-	-	1	-	-	-	-
Political Science	23	27	34	26	31	29	26	33	27	32
Sociology	47	66	49	41	55	60	44	43	62	61
Sport Management							17	24	36	39
<i>Total</i>	<i>209</i>	<i>217</i>	<i>211</i>	<i>209</i>	<i>263</i>	<i>259</i>	<i>279</i>	<i>321</i>	<i>372</i>	<i>468</i>
<b>Bachelor of Science in Earth Science</b>	-	1	1	2	1	1	-	-	-	-
<b>Bachelor Science in Nursing</b>	51	65	66	69	107	104	130	179	185	200
<b>Bachelor of Science in Recreation</b>	34	39	39	33	25	49	18	-	-	-



## Degrees and Awards Conferred Continued

Fiscal Years	2004	2005	2006	2007	2008	2009	2010	2011	2012	2013
<b>Master of Arts</b>										
Criminology							4	3	8	4
English	5	10	5	3	6	5	4	7	9	6
Gerontology	3	2	-	1	-	1	-	-	-	-
History	8	8	7	8	6	10	7	10	6	5
Psychology	30	28	25	16	25	14	11	17	19	23
Sociology	4	2	4	1	6	3	4	1	1	4
<i>Total</i>	50	50	41	29	43	33	30	38	43	42
<b>Master of Arts in Teaching</b>										
										13
<b>Master of Arts in Teaching (collaborative)</b>										
										3
<b>Master of Business Administration</b>										
	42	37	30	23	21	49	82	87	62	54
<b>Master of Professional Accounting</b>										
	6	5	3	6	4	10	18	19	14	13
<b>Master of Education</b>										
Administration and Supervision	35	84	43	24	10	24	9	-	-	-
Art Education	1	2	5	4	2	3	1	-	2	3
Business Education	18	31	27	28	26	14	17	20	12	6
Early Childhood Education	48	33	41	26	40	59	44	77	60	34
Educational Leadership							1	12	4	2
Guidance and Counseling	28	55	41	43	40	44	23	-	-	-
Media	41	59	48	39	39	40	53	47	46	41
Middle Grades Education	25	11	22	18	16	12	13	11	5	9
Physical Education	9	9	1	4	4	7	1	2	7	3
Professional Counseling							20	39	48	61
Reading Instruction	13	19	12	11	12	7	11	11	10	3
Secondary Education	18	16	14	17	11	13	11	10	6	3
Spanish Language Teacher Education					2	-	2	3	1	-
Special Education	23	47	36	23	29	24	40	39	54	43
Speech Lanaguage Pathology	17	5	18	14	11	18	20	9	10	22
<i>Total</i>	276	371	308	251	242	265	266	280	265	230
<b>Master of Music</b>										
Music Education	2	-	3	1	2	3	2	-	1	1
Performance	-	3	-	-	-	-	2	3	1	-
<i>Total</i>	2	3	3	1	2	3	4	3	2	1
<b>Master of Public Administration</b>										
	12	10	5	8	12	10	9	14	8	5
<b>Master of Science</b>										
Applied Computer Science	1	4	9	7	6	2	9	10	5	-
Biology	9	4	7	3	6	4	10	4	11	11
Teaching and Applied Mathematics								1	6	4
<i>Total</i>	10	8	16	10	12	6	19	15	22	15



## Degrees and Awards Conferred Continued

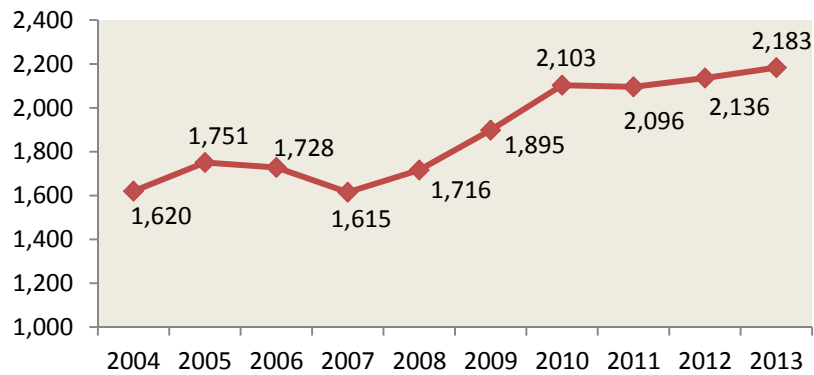
<i>Fiscal Years</i>	<i>2004</i>	<i>2005</i>	<i>2006</i>	<i>2007</i>	<i>2008</i>	<i>2009</i>	<i>2010</i>	<i>2011</i>	<i>2012</i>	<i>2013</i>
<b>Master of Science in Rural and Small Town Planning</b>	2	1	4	-	-	1	1	-	2	-
<b>Master in Urban and Regional Planning</b>										1
<b>Master of Science in Nursing</b>	10	5	5	11	10	11	9	10	6	25
<b>Specialist in Education</b>										
Administration and Supervision	55	46	36	48	46	37	16	-	-	-
Business Education	5	5	1	4	4	4	3	5	1	-
Early Childhood Education	10	3	6	7	12	20	16	22	8	16
Educational Leadership							53	24	28	19
Guidance and Counseling	12	9	13	9	12	14	12	-	-	-
Media	23	32	34	41	31	45	62	52	40	86
Middle Grades Education	13	6	7	4	6	8	10	3	2	2
Physical Education	1	2	-	2	-	4	-	-	-	-
Professional Counseling							3	5	-	-
Professional Counseling and Supervision								2	16	10
Secondary Education	5	6	8	12	5	5	4	7	7	1
Special Education	15	14	17	11	17	20	58	20	9	16
<i>Total</i>	<i>139</i>	<i>123</i>	<i>122</i>	<i>138</i>	<i>133</i>	<i>157</i>	<i>237</i>	<i>140</i>	<i>111</i>	<i>150</i>
<b>Post-Baccalaureate Certificate</b>										
Geographic Information Systems							1	5	-	3
Intergrative Health Studies										1
Museum Studies				1	5	7	8	3	-	3
Public History				-	3	2	-	2	1	
Public Management				3	-	2	5	-	-	3
<i>Total</i>				<i>4</i>	<i>8</i>	<i>11</i>	<i>14</i>	<i>10</i>	<i>1</i>	<i>10</i>
<b>Doctorate in Education (Ed.D.)</b>										
School Improvement	1	2	8	6	8	8	7	13	19	5
Professional Counseling and Supervision									4	6
<i>Total</i>	<i>1</i>	<i>2</i>	<i>8</i>	<i>6</i>	<i>8</i>	<i>8</i>	<i>7</i>	<i>13</i>	<i>23</i>	<i>11</i>
<b>Doctorate of Philosophy (Ph.D.)</b>										
Psychology: Consciousness and Society										1
<b>Total Degrees and Awards by Level</b>										
Bachelor	1,070	1,136	1,183	1,128	1,221	1,331	1,407	1,467	1,577	1,609
Post-Baccalaureate Certificate				4	8	11	14	10	1	10
Education Specialist	139	123	122	138	133	157	237	140	111	150
Master	410	490	415	339	346	388	438	466	424	402
Doctorate	1	2	8	6	8	8	7	13	23	12
<b>Total</b>	<b>1,620</b>	<b>1,751</b>	<b>1,728</b>	<b>1,615</b>	<b>1,716</b>	<b>1,895</b>	<b>2,103</b>	<b>2,096</b>	<b>2,136</b>	<b>2,183</b>

Note: Degrees for double majors are reported by first major only.

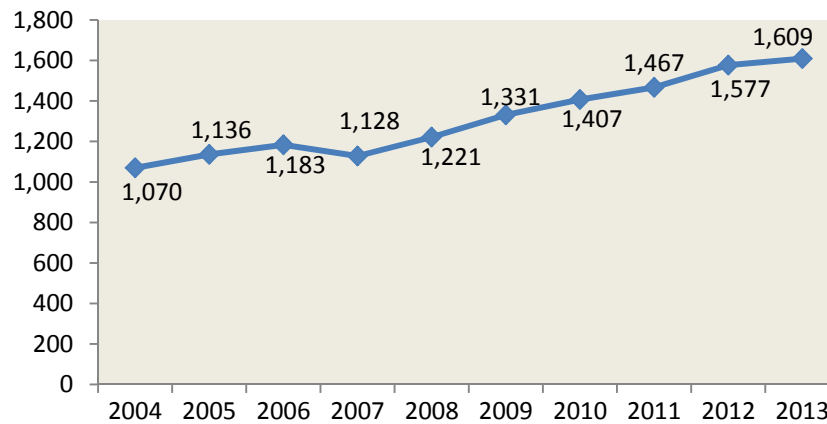
Source: Institutional Research and Planning



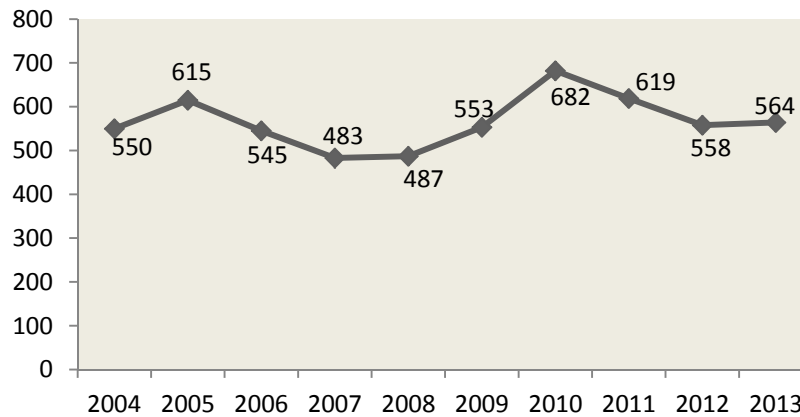
### Total Degrees and Awards Conferred Fiscal Years 2004-2013



### Total Undergraduate Degrees and Awards Conferred Fiscal Years 2004 – 2013



### Total Graduate Degrees and Awards Conferred Fiscal Years 2004 – 2013







## Student Information





## Composition of UWG Student Body Fall 2004-2013

Classification	2004	2005	2006	2007	2008	2009	2010	2011	2012	2013
Freshman	3,316	3,258	3,247	3,424	3,554	3,516	3,293	3,414	3,467	3,477
Sophomore	1,652	1,750	1,812	1,902	2,031	2,117	2,205	2,231	2,162	2,279
Junior	1,548	1,492	1,589	1,581	1,648	1,810	1,915	1,979	1,915	1,882
Senior	1,613	1,698	1,666	1,768	1,867	2,025	2,152	2,251	2,243	2,137
Graduate	1,937	1,808	1,688	1,835	2,022	1,878	1,576	1,617	1,806	1,970
Joint Enrollment	94	93	113	124	86	109	90	105	117	129
*Others	56	55	48	43	44	45	52	49	59	55
<b>Total Enrollment</b>	<b>10,216</b>	<b>10,154</b>	<b>10,163</b>	<b>10,677</b>	<b>11,252</b>	<b>11,500</b>	<b>11,283</b>	<b>11,646</b>	<b>11,769</b>	<b>11,929</b>

Gender										
Female	6,446	6,376	6,406	6,700	7,075	7,182	7,051	7,253	7,376	7,675
Male	3,770	3,778	3,757	3,977	4,177	4,318	4,232	4,393	4,393	4,254

Ethnicity										
Hispanic/Latino						355	348	456	470	484
Non-Hispanic						9,529	9,394	9,867	10,160	11,268
Ethnicity Unknown/Undeclared						1,616	1,541	1,323	1,139	177

Race										
African/Black American	2,367	2,342	2,461	2,707	2,837	2,920	2,959	3,486	3,692	4,002
American Indian/Alaskan Native	24	22	22	29	32	44	36	27	26	23
Asian or Pacific Islander	161	155	161	188	192					
Asian						181	163	179	200	165
Native Hawaiian/Pacific Islander						7	10	14	10	12
Caucasian/White	7,363	7,281	7,136	7,142	7,364	7,059	6,422	6,904	6,755	6,719
Hispanic	151	171	199	214	272		348	456	470	484
Two or More Races	150	183	184	217	259	84	152	308	372	347
Race Unknown/Undeclared				180	296	1,205	1,193	272	244	177

New Students										
Beginning Freshmen	1,719	1,656	1,709	1,828	1,998	1,916	1,825	1,940	1,952	2,121
**Transfers	615	577	591	602	609	661	601	714	692	677
Graduate Students	289	288	317	327	387	385	287	396	487	489
Joint Enrollment	67	74	80	90	54	79	64	75	85	93
*Others	37	36	31	29	39	44	48	46	50	36
<b>Total</b>	<b>2,727</b>	<b>2,631</b>	<b>2,728</b>	<b>2,876</b>	<b>3,087</b>	<b>3,085</b>	<b>2,825</b>	<b>3,171</b>	<b>3,266</b>	<b>3,416</b>

Attendance Status										
Full-time Undergraduate	6,899	6,921	7,002	7,415	7,833	8,126	8,123	8,265	8,178	8,369
Full-time Graduate	381	422	360	453	468	549	529	532	636	698
<b>Total</b>	<b>7,280</b>	<b>7,343</b>	<b>7,362</b>	<b>7,868</b>	<b>8,301</b>	<b>8,675</b>	<b>8,652</b>	<b>8,797</b>	<b>8,814</b>	<b>9,067</b>
Part-time Undergraduate	1,380	1,425	1,473	1,427	1,397	1,496	1,584	1,764	1,785	1,590
Part-time Graduate	1,556	1,386	1,328	1,382	1,554	1,329	1,047	1,085	1,170	1,272
<b>Total</b>	<b>2,936</b>	<b>2,811</b>	<b>2,801</b>	<b>2,809</b>	<b>2,951</b>	<b>2,825</b>	<b>2,631</b>	<b>2,849</b>	<b>2,955</b>	<b>2,862</b>

Students Receiving Veterans Benefits										
Veterans										141
Others receiving benefits										165
<b>Total</b>	<b>174</b>	<b>159</b>	<b>166</b>	<b>168</b>	<b>166</b>	<b>190</b>	<b>250</b>	<b>400</b>	<b>420</b>	<b>306</b>

\*Includes Transients

\*\*Includes transfer freshmen, sophomores, juniors, and seniors

Beginning fall 2013, students receiving veterans benefits are separated to reflect both the veteran and their families.

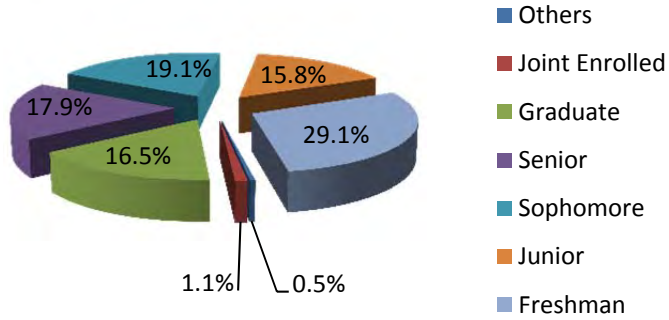
New Race/Ethnicity IPEDS reporting methods effective Summer 2009.

Source: Office of the Registrar and Institutional Research and Planning

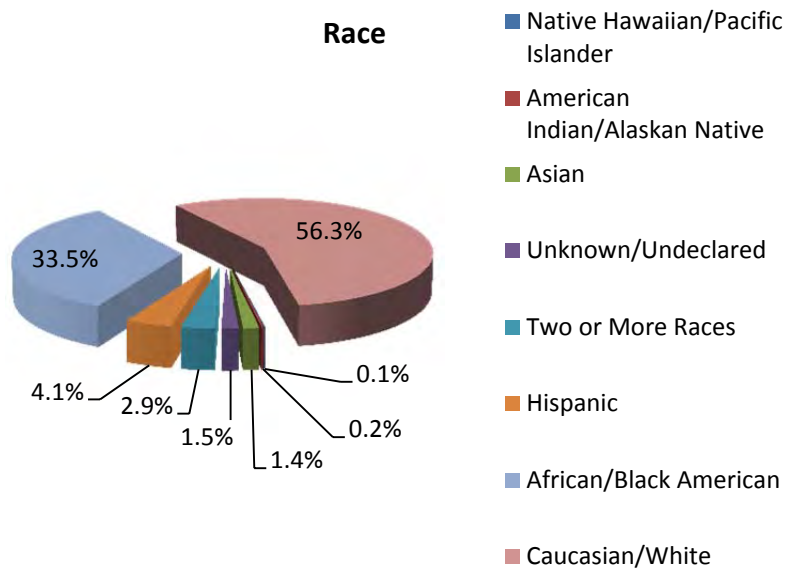


# UWG Students At-A-Glance Fall 2013

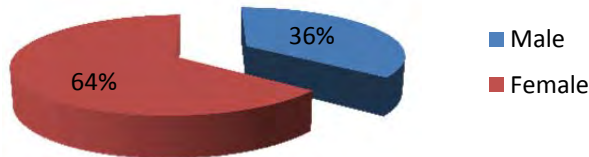
## Classification



## Race



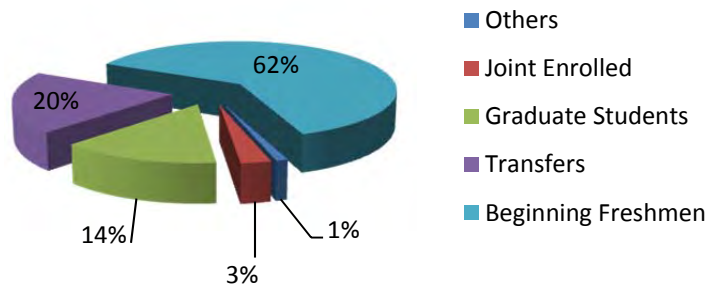
## Gender



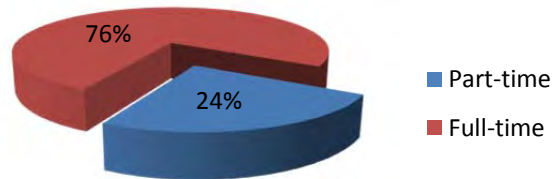
Source: Office of the Registrar and Institutional Research and Planning



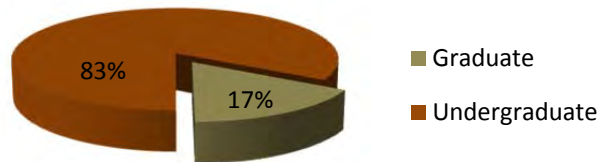
### New Students



### Attendance



### Enrolled



Source: Office of the Registrar and Institutional Research and Planning



## Admissions Fall 2004 – 2013

Admissions policies and procedures are administered by the Office of Admissions. The Office of Admissions evaluates applicant eligibility and recommends policies governing admission to the University. Learn more about admissions policies at <http://www.westga.edu/admissions/>.

<b>All Students Enrolled</b>		<b>2004</b>	<b>2005</b>	<b>2006</b>	<b>2007</b>	<b>2008</b>	<b>2009</b>	<b>2010</b>	<b>2011</b>	<b>2012</b>	<b>2013</b>
Enrolled		10,216	10,154	10,163	10,677	11,252	11,500	11,283	11,646	11,769	11,929
New Enrolled		2,727	2,631	2,728	2,876	3,087	3,085	2,825	3,171	3,266	3,416
New Enrolled		27%	26%	27%	27%	27%	27%	25%	27%	28%	29%
<b>Graduate Students Enrolled</b>											
Enrolled		1,937	1,808	1,688	1,835	2,022	1,878	1,576	1,617	1,806	1,970
New Enrolled		289	288	317	327	387	385	287	396	487	489
New Enrolled		15%	16%	19%	18%	19%	21%	18%	25%	27%	25%
<b>Undergraduate Students Enrolled</b>											
Enrolled		8,279	8,346	8,475	8,842	9,230	9,622	9,707	10,029	9,963	9,959
New Enrolled		2,438	2,343	2,411	2,549	2,700	2,700	2,538	2,775	2,779	2,927
New Enrolled		29%	28%	28%	29%	29%	28%	26%	28%	28%	29%
<b>All Undergraduates Applicants</b>											
Applicants		6,471	6,676	7,331	7,361	7,571	7,528	7,876	8,254	8,244	8,832
Accepted		3,940	3,771	3,842	4,004	4,483	4,429	4,424	4,641	4,732	4,833
Enrolled		2,371	2,269	2,331	2,459	2,646	2,621	2,474	2,630	3,213	2,804
Accepted		61%	56%	52%	54%	59%	59%	56%	56%	57%	55%
Accepted and Enrolled (Yield)		60%	60%	61%	61%	59%	59%	56%	57%	68%	58%
<b>New Freshman Student Applicants Accepted and Enrolled</b>											
Applicants		4,953	5,175	5,696	5,803	6,159	5,981	6,361	6,634	6,435	7,266
Accepted		3,031	2,859	2,937	3,089	3,589	3,444	3,460	3,637	3,589	3,913
Enrolled		1,719	1,656	1,709	1,828	1,998	1,916	1,825	1,991	2,070	2,206
Accepted		61%	55%	52%	53%	58%	58%	54%	55%	56%	54%
Accepted and Enrolled (Yield)		57%	58%	58%	59%	56%	56%	53%	55%	58%	56%
<b>New Transfer Student Applicants Accepted and Enrolled</b>											
Applicants		1,518	1,501	1,635	1,558	1,412	1,547	1,515	1,620	1,809	1,566
Accepted		909	912	905	915	894	985	964	1,004	1,143	920
Enrolled		652	613	622	631	648	705	649	639	638	598
Accepted		60%	61%	55%	59%	63%	64%	64%	62%	63%	59%
Accepted and Enrolled (Yield)		72%	67%	69%	69%	72%	72%	67%	64%	56%	65%
<b>Mean Scores</b>											
SAT Critical Reading		508	515	507	509	510	503	494	499	485	485
SAT Math		498	506	501	502	502	496	488	492	477	476
SAT Writing		-	-	-	484	485	482	477	475	467	470
HSGPA First-time Full-time		2.97	3.01	3.00	3.09	3.04	3.04	3.06	3.06	3.08	3.11

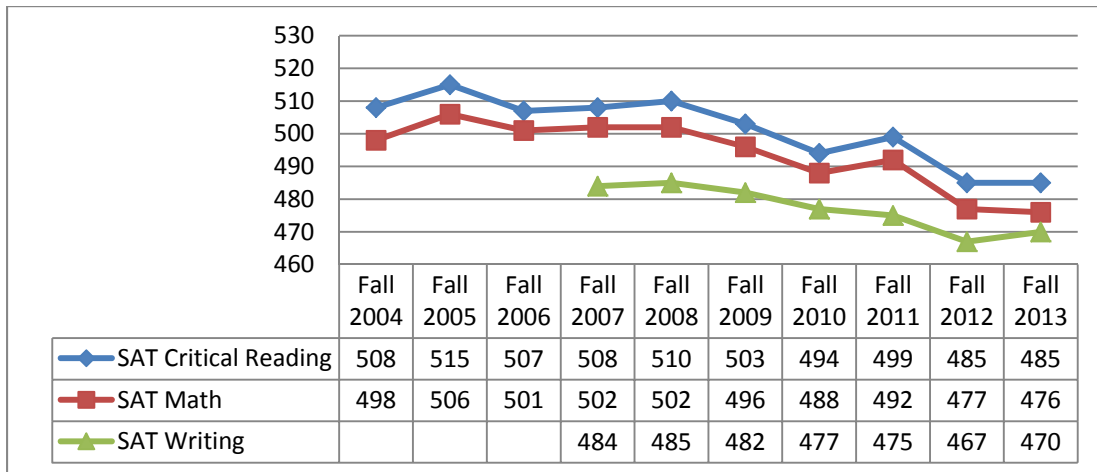
Note: Fall 2012, the Office of Admissions began including all ACT or SAT scores submitted by first-time, full-time freshmen to calculate the mean scores. Prior to fall 2012 the mean scores were calculated by only the ACT or SAT score used to admit the student.

*High School GPA (HSGPA) – First-time, Full-time*

*Source: Office of Admissions, Registrar, and Institutional Research and Planning*



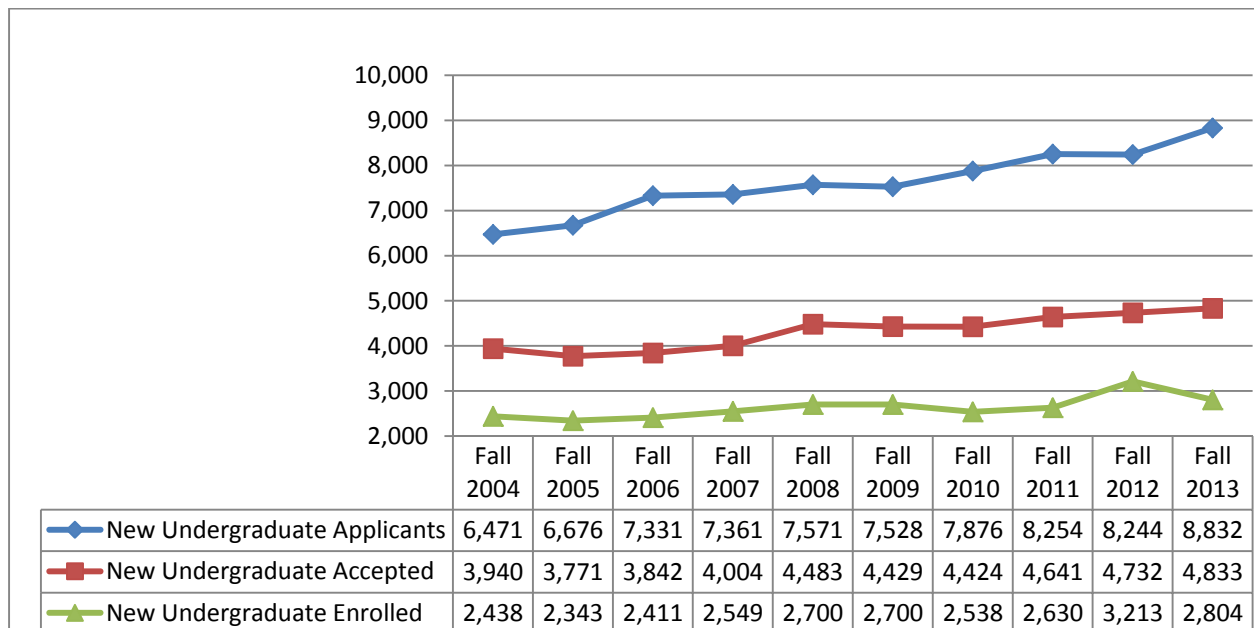
### First Time Entering Freshmen Average SAT Scores\*



\*SAT Scores are from the re-centered scale.

Note: SAT Verbal became SAT Critical and SAT Writing was added fall 2007.  
Scores reported are for first-time, full-time freshmen.

### New Undergraduate Applicants





## Geographic Origin by County Fall 2013

Service Area				Five Metro Area			
Counties	Undergraduate	Graduate	Total	Counties	Undergraduate	Graduate	Total
Bartow	88	20	108	Clayton	252	44	296
Butts	17	1	18	Cobb	656	184	840
Carroll	1,382	267	1,649	Dekalb	567	97	664
Catoosa	31	12	43	Fulton	614	156	770
Chattooga	33	5	38	Gwinnett	543	54	597
Cherokee	118	19	137	<b>Total</b>	<b>2,632</b>	<b>535</b>	<b>3,167</b>
Coweta	991	151	1,142				
Dade	4	3	7				
Dawson	10	2	12				
Douglas	828	123	951				
Fannin	2	3	5				
Fayette	401	78	479				
Floyd	137	33	170				
Forsyth	88	4	92				
Gilmer	4	2	6				
Gordon	58	12	70				
Haralson	262	23	285				
Harris	29	7	36				
Heard	82	4	86				
Henry	339	37	376				
Lamar	7	1	8				
Meriwether	36	6	42				
Monroe	9	1	10				
Murray	15	4	19				
Muscogee	71	21	92				
Newton	118	17	135				
Paulding	322	87	409				
Pickens	8	2	10				
Pike	5	5	10				
Polk	81	19	100				
Rockdale	131	14	145				
Spalding	55	13	68				
Talbot	5	-	5				
Troup	185	21	206				
Upson	24	2	26				
Walker	55	8	63				
Whitfield	63	10	73				
<b>Total</b>	<b>6,094</b>	<b>1,037</b>	<b>7,131</b>				

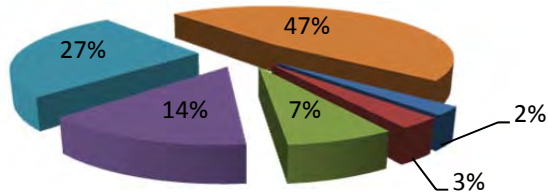
	Undergraduate	Graduate	Total
<i>Other Georgia Counties</i>	705	151	856
<i>Out of Country</i>	293	73	366
<i>Out of State</i>	235	174	409
<b>Total</b>	<b>1,233</b>	<b>398</b>	<b>1,631</b>

Source: Institutional Research and Planning



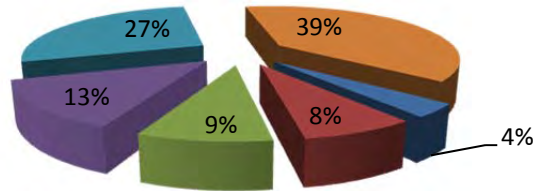
### Undergraduates

- Out of State
- Out of Country
- Other Georgia Counties
- Carroll County
- Metro Atlanta
- Primary Service Area



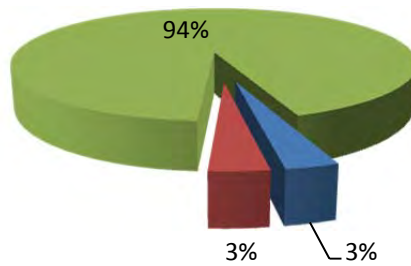
### Graduates

- Out of Country
- Other Georgia Counties
- Out of State
- Carroll County
- Metro Atlanta
- Primary Service Area



### All Students

- Other Countries
- Out of State
- Georgia Residents





## Geographic Origin by State or Territory Fall 2013

<i>State</i>	<i>Undergraduate</i>	<i>Graduate</i>	<i>Total</i>
Alabama	69	25	94
Arizona	5	-	5
Arkansas	1	2	3
California	12	9	21
Colorado	3	1	4
Connecticut	1	4	5
Florida	21	16	37
Georgia	9,431	1,723	11,154
Hawaii	1	-	1
Idaho	1	-	1
Illinois	8	5	13
Indiana	3	5	8
Iowa	1	1	2
Kansas	1	-	1
Kentucky	2	2	4
Louisiana	3	3	6
Maryland	6	5	11
Massachusetts	1	3	4
Michigan	6	5	11
Minnesota	5	3	8
Mississippi	4	5	9
Missouri	4	2	6
Nebraska	1	-	1
Nevada	1	-	1
New Hampshire	1	1	2
New Jersey	5	-	5
New York	11	7	18
North Carolina	5	15	20
Ohio	6	5	11
Oklahoma	-	1	1
Oregon	-	1	1
Pennsylvania	4	5	9
Puerto Rico*	1	-	1
Rhode Island	2	-	2
South Carolina	5	13	18
South Dakota	1	-	1
Tennessee	11	15	26
Texas	5	5	10
Utah	-	4	4
Virgin Islands*	1	-	1
Virginia	10	2	12
Washington	2	3	5
Wisconsin	3	1	4
<b>Total</b>	<b>9,664</b>	<b>1,897</b>	<b>11,561</b>

	<i>Undergraduate</i>	<i>Graduate</i>	<i>Total</i>
Out of the Country	293	73	366
Overseas Military	2	-	2

\* US Territory

Source: Institutional Research and Planning



## Geographic Origin by Country Fall 2013

Country	Under-graduate	Graduate	Total	Country	Under-graduate	Graduate	Total
Antigua and Barbuda	2	-	2	Jamaica	23	3	26
Argentina	-	1	1	Jersey	1	-	1
Australia	5	-	5	Kenya	13	1	14
Azerbaijan	1	-	1	Korea, Republic of	8	-	8
Bahamas	1	1	2	Lebanon	1	-	1
Bangladesh	1	-	1	Liberia	3	-	3
Bermuda	-	1	1	Mexico	7	1	8
Brazil	3	1	4	Nepal	-	1	1
Burundi	1	-	1	New Zealand	-	1	1
Cameroon	10	-	10	Nicaragua	2	1	3
Canada	16	5	21	Niger	-	1	1
Cayman Islands	1	-	1	Nigeria	33	5	38
Central African Republic	1	-	1	Norway	1	1	2
Chile	-	1	1	Pakistan	-	2	2
China	52	2	54	Peru	1	-	1
Columbia	3	1	4	Poland	3	-	3
Comoros	-	1	1	Romania	1	1	2
Cote D'Ivoire	1	1	2	Russia	4	3	7
Cuba	1	-	1	Sierra Leone	1	-	1
Dominican Republic	1	-	1	South Africa	1	2	3
East Timor	-	1	1	Spain	5	1	6
Ecuador	1	-	1	Sri Lanka	2	-	2
Egypt	-	1	1	Sweden	1	-	1
El Salvador	1	-	1	Syria	1	-	1
Eritrea	-	1	1	Taiwan	1	-	1
Ethiopia	4	1	5	Tanzania	1	-	1
Finland	2	-	2	Thailand	1	1	2
France	8	-	8	Trinidad and Tobago	1	4	5
Gabon	1	2	3	Turkey	-	2	2
Gambia	1	-	1	Uganda	-	1	1
Germany	11	1	12	United Kingdom	9	-	9
Ghana	9	2	11	United States of America	9,666	1,897	11,563
Guatemala	2	-	2	Uruguay	-	1	1
Guinea	1	1	2	Venezuela	4	-	4
Haiti	6	-	6	Yemen	2	2	4
India	11	8	19	Zambia	2	-	2
Iran	-	3	3	Zimbabwe	2	2	4
				<b>Total</b>	<b>9,959</b>	<b>1,970</b>	<b>11,929</b>

Source: Institutional Research and Planning



## Geographic Origin of Students Fall 2013

Undergraduates	Graduates
<b>Top Five Counties</b>	
<ol style="list-style-type: none"><li>1 Coweta</li><li>2 Douglas</li><li>3 Cobb</li><li>4 Fulton</li><li>5 Dekalb</li></ol> <p><i>Excluding Carroll County</i></p>	<ol style="list-style-type: none"><li>1 Cobb</li><li>2 Fulton</li><li>3 Coweta</li><li>4 Douglas</li><li>5 Dekalb</li></ol>
<b>Top Five States</b>	
<ol style="list-style-type: none"><li>1 Alabama</li><li>2 Florida</li><li>3 California</li><li>4 New York</li><li>5 Tennessee</li></ol> <p><i>Excluding Georgia</i></p>	<ol style="list-style-type: none"><li>1 Alabama</li><li>2 Florida</li><li>3 North Carolina</li><li>4 Tennessee</li><li>5 South Carolina</li></ol>
<b>Top Five Countries</b>	
<ol style="list-style-type: none"><li>1 China</li><li>2 Nigeria</li><li>3 Jamaica</li><li>4 Canada</li><li>5 Kenya</li></ol> <p><i>Excluding USA</i></p>	<ol style="list-style-type: none"><li>1 India</li><li>2 Nigeria</li><li>3 Canada</li><li>4 Trinidad and Tobago</li><li>5 Russia</li></ol>

Source: Institutional Research and Planning



## Off Campus Site Profile

### Summer 2013

Off Campus Sites	No. of Courses	No. of Students*	Credit Hours		
			Undergraduate	Graduate	Total
Newnan	29	275	1,168	111	1,279
Middle Georgia	3	22	48	12	60
Atlanta Area	10	113	0	448	448

### Fall 2013

Off Campus Sites	No. of Courses	No. of Students*	Credit Hours		
			Undergraduate	Graduate	Total
Newnan	45	449	3,142	273	3,415
Middle Georgia	3	20	0	84	84
North Georgia	11	34	460	0	460
Atlanta Area	11	136	0	627	627

\*Unduplicated Headcount

Note: Distance courses (N) taught 95 percent or more online are not included.

Source: *Off-Campus Course Report*

## Fall Retention and Graduation Rates First-Time Full-Time Freshman Students\*

		Entered	Entered	Entered	Entered	Entered	Entered	Entered	Entered	Entered	Entered	Entered
		Fall 2002	Fall 2003	Fall 2004	Fall 2005	Fall 2006	Fall 2007	Fall 2008	Fall 2009	Fall 2010	Fall 2011	Fall 2012
First Year	N=	1,625	1,728	1,701	1,653	1,700	1,793	2,007	1,909	1,848	1,931	2,021
Second Year	Fall	1,127	1,240	1,203	1,163	1,238	1,345	1,471	1,397	1,346	1,355	1,430
		69.35%	71.76%	70.72%	70.36%	72.82%	75.01%	73.29%	73.18%	72.84%	70.17%	70.76%
Third Year	Fall	813	920	879	921	917	1,022	1,126	1,100	1,053	1,070	
		50.03%	53.24%	51.68%	55.72%	53.94%	57.00%	56.10%	57.62%	56.98%	55.41%	
Fourth Year	Fall	691	811	751	809	808	932	1,014	924	887		
		42.52%	46.93%	44.15%	48.94%	47.53%	51.98%	50.52%	48.40%	48.00%		
Fifth Year	Fall	471	544	524	563	489	587	651	572			
		28.98%	31.48%	30.81%	34.06%	28.76%	32.74%	32.44%	29.96%			
Sixth Year	Fall	192	225	228	235	201	209	240				
		11.82%	13.02%	13.40%	14.22%	11.82%	11.66%	11.96%				
<b>Graduation</b>	N=	177	208	198	207	248	298	316	298			
<b>Rate</b>	4 yr	10.89%	12.04%	11.64%	12.52%	14.59%	16.62%	15.74%	15.61%			
	N=	417	507	474	492	533	641	687				
	5 yr	25.66%	29.34%	27.87%	29.76%	31.35%	35.75%	34.23%				
	N=	513	627	587	632	618	761					
	6 yr	31.57%	36.28%	34.51%	38.23%	36.35%	42.44%					

NOTE: Graduation Rates updated as of end of summer 2013 and Retention Rates as of census date fall 2013.

The data reported above may differ from data reported to federal, state, and regional agencies due to differences in reporting guidelines, reporting definitions, and the timing of when the information was prepared.

\*Each entering cohort includes all entering freshmen enrolled full-time whose first-term is the fall indicated or the previous summer.

Source: *Institutional Research and Planning*



## Extended Learning

Extended Learning is responsible for the administration of UWG Online/Distance and Distributed education Evening/Weekend University, the Newnan Center, eCore, Continuing Education, and various off-campus instructional sites.

### Headcount and Credit Hours Enrolled in Online Courses by Delivery Method Fall 2009 - 2013

Method	Fall 2009		Fall 2010		Fall 2011		Fall 2012		Fall 2013	
	Head Count*	Credit Hours	Head Count*	Credit Hours	Head Count*	Credit Hours	Head Count*	Credit Hours	Head Count*	Credit Hours
G - eCore	585	2,899	586	2,867	606	2,728	674	3,053	625	2,800
D - 51-94% Distance	1,808	6,349	1,937	6,724	1,836	6,608	1,605	5,734	1,652	6,490
N - 95% or more Distance	2,532	8,452	2,706	9,754	3,436	14,269	3,895	17,669	4,133	19,693
Y - GML	.	.	3	18	3	21	.	.	.	.
<b>Unduplicated - All</b>	<b>4,254</b>	<b>17,700</b>	<b>4,492</b>	<b>19,363</b>	<b>4,952</b>	<b>23,626</b>	<b>5,384</b>	<b>26,456</b>	<b>5,615</b>	<b>28,983</b>

\*Unduplicated Count

**Note:** e-Core means electronic core curriculum courses which enable the University of Georgia students to complete the first two years of their college courses entirely online, except to occasional proctored exams.

G - Designates e-Core courses.

D - Designates courses in which 51-94% are delivered online.

N - Designates courses in which 95% or more are delivered online

Y- GML (GeorgiaOnMyLine)

Source: *Institutional Research and Planning*



## Continuing Education

Continuing Education is an extension of traditional on-campus learning. Non-credit classes are developed and offered to citizens of the University community at convenient locations and flexible schedules to accommodate a wide variety of participants.

Continuing Education's mission is to provide non-credit opportunities to enhance the quality of life for local citizens and training support to business and industry that serve as catalysts for economic development.

Ten contact hours of participation in a qualified continuing education program is a Continuing Education Unit (CEU). The CEU is the national standard for measuring and individual's participation in a non-credit program. Programs qualifying for CEU credit are referred to as Category I and Category II. Category I activities are designed to enhance occupational skills and individual permanent records as transcripts are maintained. Category II activities are designed for personal enrichment that is social, cultural, and/or recreational in nature; no permanent records or transcripts are maintained.

### Continuing Education Programs Fiscal Years 2005-2013

<i>Fiscal Year</i>	<i>Programs</i>	<i>Participants</i>	<i>CEUs</i>
2005	332	4,403	6,478
2006	226	2,589	2,617
2007	266	2,909	2,945
2008	260	2,261	2,689
2009	250	2,816	2,594
2010	242	2,255	2,742
2011	191	2,553	2,476
2012	189	1,834	2,209
2013	210	1,556	2,546

**Note:** Numbers include Categories I and II.

*Source: Continuing Education*



## Georgia Alumni by County December 2013

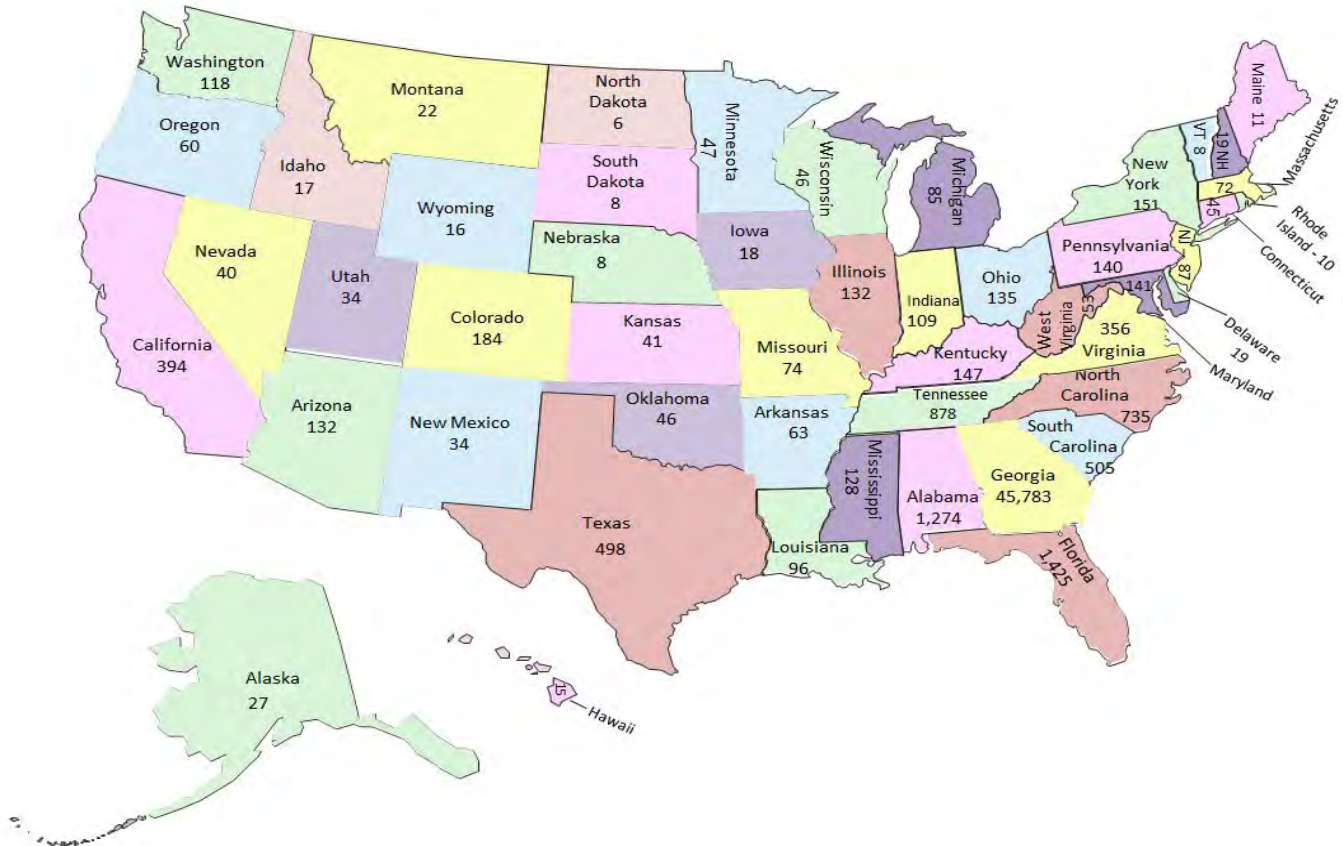
<b>County</b>	<b>Total</b>	<b>County</b>	<b>Total</b>	<b>County</b>	<b>Total</b>	<b>County</b>	<b>Total</b>
Appling	7	Dade	56	Jefferson	9	Richmond	80
Atkinson	2	Dawson	53	Jenkins	3	Rockdale	366
Bacon	10	Decatur	19	Johnson	4	Schley	3
Baker	1	Dekalb	2,101	Jones	36	Screven	5
Baldwin	32	Dodge	11	Lamar	119	Seminole	6
Banks	25	Dooly	5	Lanier	2	Spalding	451
Barrow	162	Dougherty	57	Laurens	29	Stephens	32
Bartow	807	Douglas	2,591	Lee	36	Stewart	1
Ben Hill	10	Early	7	Liberty	18	Sumter	27
Berrien	6	Echols	0	Lincoln	5	Talbot	19
Bibb	179	Effingham	22	Long	2	Taliaferro	1
Bleckley	7	Elbert	32	Lowndes	46	Tattnall	5
Brantley	2	Emanuel	11	Lumpkin	56	Taylor	7
Brooks	10	Evans	5	Macon	7	Telfair	3
Bryan	22	Fannin	103	Madison	36	Terrell	3
Bulloch	34	Fayette	1,744	Marion	5	Thomas	33
Burke	13	Floyd	1,298	McDuffie	13	Tift	33
Butts	107	Forsyth	655	McIntosh	18	Toombs	22
Calhoun	1	Franklin	28	Meriwether	184	Towns	30
Camden	33	Fulton	2,869	Miller	8	Treutlen	5
Candler	6	Gilmer	133	Mitchell	9	Troup	691
Carroll	6,903	Glascok	1	Monroe	61	Turner	5
Catoosa	466	Glynn	130	Montgomery	5	Twiggs	3
Charlton	3	Gordon	500	Morgan	78	Union	57
Chatham	172	Grady	12	Murray	347	Upson	163
Chattahoochee	0	Greene	53	Muscogee	238	Walker	453
Chattooga	200	Gwinnett	2,263	Newton	354	Walton	306
Cherokee	1,097	Habersham	81	Oconee	115	Ware	28
Clarke	191	Hall	440	Oglethorpe	21	Warren	4
Clay	2	Hancock	6	Paulding	1,658	Washington	12
Clayton	786	Haralson	1,197	Peach	12	Wayne	13
Clinch	1	Harris	113	Pickens	160	Webster	1
Cobb	3,984	Hart	51	Pierce	13	Wheeler	1
Coffee	13	Heard	300	Pike	190	White	55
Colquitt	17	Henry	1,054	Polk	851	Whitfield	990
Columbia	93	Houston	144	Pulaski	4	Wilcox	1
Cook	6	Irwin	7	Putnam	47	Wilkes	17
Coweta	3,208	Jackson	129	Quitman	2	Wilkinson	8
Crawford	8	Jasper	50	Rabun	52	Worth	11
Crisp	10	Jeff Davis	3	Randolph	9	<b>Total</b>	<b>45,783</b>

Note: Lost and deceased are 2,759

Source: Development and Alumni Relations



## Alumni in the United States December 2013



**54,492 Total Alumni**

The alumni of the University of West Georgia constitute its largest single constituency and represent its most valuable resource. Membership in the Alumni Association is open to all graduates of the Fourth District Agricultural and Mechanical School, West Georgia College, the State University of West Georgia, and the University of West Georgia. The Association's activities are directed by a 36-member Board of Directors with several lifetime members. The Association informs alumni of institutional plans, progress, opportunities, and needs.

*Perspective*, the alumni publication, is mailed to all alumni and friends three times a year. The spring issue includes the Honor Roll of Giving and is presented in a magazine format.

Major activities sponsored by the Alumni Association include Homecoming, dinner with 12 strangers, as well as reunions and special events that involve hundreds of alumni each year.

*Note:* 5,088 lost, deceased, or in foreign countries

*Source:* *Development and Alumni Relations*



## Student Services





## Student Housing

The Department of Housing and Residence Life provides a living/learning community environment that complements the University's educational process. More than 3,000 students are housed in seven residence halls and the Greek Village Complex. Co-ed housing options are for students who live on campus. Traditional residence halls have separate areas for men and women, typically separated by units. Residence halls provide students with the convenience of being close to campus life and its activities as well as comfortable and attractive surroundings. On campus living provides each student with the community living experience, which fosters the development of disciplined minds, social conscientiousness, and responsibility for governing hall affairs. In addition, the department offers a variety of social, educational, and recreational programs that promote individual growth and development.

<b>Student Housing Occupancy</b>			
<b>Residence Hall</b>	<b>Type</b>	<b>Fall 2012</b>	<b>Fall 2013</b>
Arbor View	Co-ed	588	574
Bowdon	Co-ed	0	275
Center Pointe Suites	Co-ed	590	592
Gunn	Co-ed	113	81
Strozier Complex	Co-ed	172	113
Tyus	Co-ed	169	165
University Suites	Co-ed	578	566
Watson	Women	260	0
Greek Village		263	251
The Oaks	Co-ed	0	460
<b>By Level</b>			
Academy		89	60
Freshman		2,098	2,143
Sophomore		462	517
Junior		48	232
Senior		21	122
Graduate		5	3
Other		10	0
<b>Total</b>		<b>2,733</b>	<b>3,077</b>

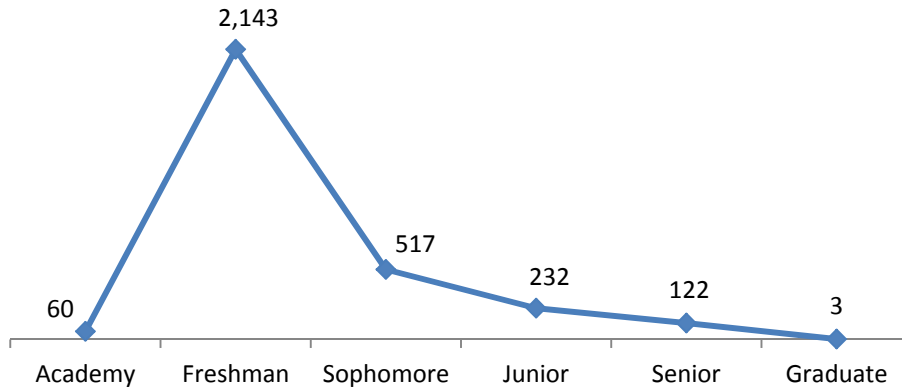
Note: Fall 2012 Bowdon Hall was renovated.

Fall 2013 Watson Hall was renovated and the Oaks opened.

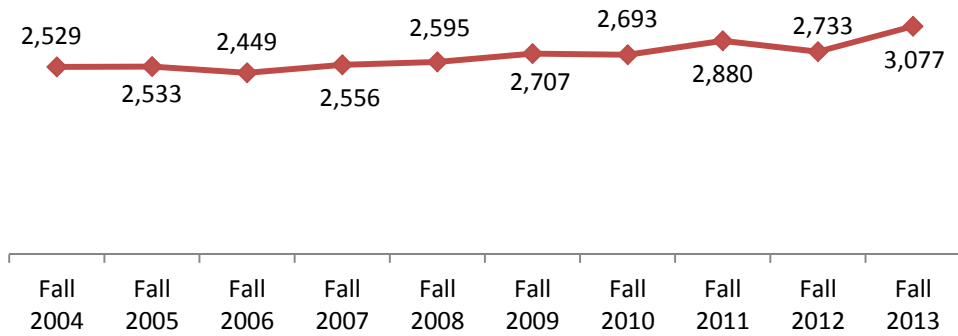
Source: *Housing and Residence Life*



### Housing Occupancy by Level Fall 2013



### Housing Occupancy Fall 2004 -2013



Source: *Housing and Residence Life*



The *Counseling and Career Development Center* provides career, mental health, academic counseling, and support services for students with disabilities. The Center provides training and supervision for select graduate students. In the past year, approximately 1,500 students were seen for personal, academic and career counseling. More than 5,400 students participated in group, developmental, and educational programs offered. Fifteen of the sixteen counselors on staff are licensed in the state of Georgia and hold a specialist or doctoral degree. The Center also provided 726 students with disabilities assistance in academic and physical access to campus and classroom programs.

The *University Bookstore* carries textbooks and school supplies necessary for students' class use and offers a selection of imprinted gifts, clothing, art and office supplies, and general books. It is also a UPS pick-up station. New and used textbooks are available online at [www.bookstore.westga.edu](http://www.bookstore.westga.edu).

*Health Services* provides diagnosis, first aid, and treatment of minor or short-term acute illnesses or injuries under the supervision of a physician. Health Services is open from 8:00 a.m. to 6:00 p.m. Monday through Thursday and 8:00 a.m. to 5:00 p.m. Friday. Students are referred to other medical personnel or facilities for special services such as x-ray, surgery, and dentistry. Medication necessary for treatment is usually available at the Center. In addition, many tests performed in the Health Center laboratory are covered by the student's health fee. Health Services saw 23,998 patients and filled 43,376 prescriptions in fiscal year 2013.

*University Recreation (UREC)* provides comprehensive, high-quality, student-focused programs, facilities, and services that inspires, empowers, and educates the university community to connect and develop exceptional leaders who value and embody healthy lifestyles. The department manages club sports, event management, fitness/wellness, intramural sports, outdoor recreation, and the Campus Center operations. The Campus Center contains a fitness center, four basketball courts, climbing walls, two group exercise studios, an indoor track, a game room, a ballroom, meeting spaces, locker rooms, and an equipment rental center. It offers 50 group exercise classes per week, 200 personal training sessions, and specialized programs. UREC employs between 100-150 students a year to assist with the management and operation of programs and services in the facilities.

*Enrollment Services Center* provides Financial Aid and Registrar's customer service and is located in Parker Hall. The center assists with applications for graduation, transcripts, general financial aid questions, and completing FAFSA and other forms.



## Career Services

*Career Services* provides a comprehensive career development employment program for students and alumni. Services include job search/career coaching, resume referral to organizations, and career related learning experiences through professional practice programs.

### ***Career Services*** ***Fiscal Years 2010 - 2013***

	<b>2010</b>	<b>2011</b>	<b>2012</b>	<b>2013</b>
<b><i>Student Employment Program</i></b>				
Student Visits to Office	7,478	8,865	12,270	9,201
Student Referrals	10,389	12,925	14,932	13,561
Hired	602	744	1,111	792
Wages Generated	\$1,790,624	\$2,458,816	\$3,258,754	\$2,558,589
<b><i>Volunteer Services Office</i></b>				
Student Visits to Office <sup>1</sup>	666	651	779	640
Student Referrals	782	677	682	447
Student Opportunities	154	160	168	155
<b><i>Professional Practice</i></b>				
Counseling Contacts <sup>1</sup>	1,128	1,001	1,112	809
Student Referrals	209	187	297	322
Students Hired	116	128	113	47
Participating Employers	59	82	56	36
Wages Generated	\$245,242	\$341,467	\$219,440	\$66,987
<b><i>Career Employment Program</i></b>				
Student Visits to Office	818	1,545	1,743	1,185
Resume Referrals	467	441	494	536
Overall Employer Recruitment	210	232	291	316

<sup>1</sup>Combined number of students for Volunteer Services and Professional Practice Program

Source: *Career Services*



## Irvine Sullivan Ingram Library

The academic heart of the campus, Ingram Library provides online and in-house collections and services to meet curricular needs. The 85,000 square feet, four story building is open 24 hours a day from Sunday afternoons through Friday evenings, and during the day on Saturday. The main floor is designed for individual and group study and project development. A Starbucks is on the west side of the library. The library contains electronic classrooms, conference rooms, group study rooms, and computers and other equipment for accessing materials in print, online, recorded, and micro formats.

Wireless access to internet resources is available. Student Technology Assistants are on duty all hours to assist with technology-related needs, and laptops and other equipment are available for student check-out or in-house use. Those seeking assistance with resources and research can utilize reference services at the reference desk on the main floor, via telephone, and through the online *QuestionPoint* 24/7 chat service through the web site. Individuals needing research support may book appointments with librarians through the GoPRO (Personalized Research Option).

Library collections include 400,000 cataloged volumes, over 1,100,000 microforms, 11,000 audiovisual items, and more than 20,000 maps and charts. It provides access to some 400 electronic databases, and 50,000 print and electronic serials, including magazines, scholarly journals, and newspapers. A depository for federal documents, the library houses a collection of United States government publications and provides access to government information online and other electronic formats.

The library facilitates access to the university system resources and other libraries. The catalog through Georgia Interconnected Libraries (GIL), lists materials available in Ingram Library collections and provides links to catalogs of other libraries. West Georgia students, faculty, and staff may request books from any university system library through the online GIL Express service. The university is a member of the Atlanta Regional Council for Higher Education (ARCHE), which allows students, faculty and staff to utilize the resources of member libraries. Ingram Library provides interlibrary loan service through its web site, facilitating borrowing books from libraries throughout the country. Articles can be requested and transmitted electronically through interlibrary loan.

Library users have access to Georgia Library Learning Online (GALILEO), an online library of databases, full text electronic journals, and reference resources available to all Georgians, as well as to a range of electronic materials selected to support the university's academic programs. All licensed electronic materials are available to university students and faculty through internet access. By providing access to an extensive range of online materials, developing an electronic reserve system and online request systems for obtaining materials from other libraries, the library ensures that students enrolled at remote class sites and in online courses are afforded the same support as those attending classes on campus. Fax and courier services to off campus class sites and arrangements with libraries in Newnan and other locations also support off campus students.

The library offers an instructional program. LIBR 1101, a for-credit course taught face to face or online, is part of Area B of the Core curriculum. LIBR 1101 is designed to orient students to do research in academic libraries and to critically evaluate information and media resources. Specific assignments instruction sessions, requested by faculty are developed for undergraduate and graduate courses.

The library is named in honor of Irvine Sullivan Ingram, the institution's first president. The glass enclosed lobby overlooks a study garden designed in honor of Maurice K. Townsend, fifth president of the university, and the Thomas B. Murphy Reading Room, which honors Georgia's longest-serving House speaker. Speaker Murphy's State Capitol office was re-created on the ground floor. The Murphy office installation is supported with panel and digital exhibits exploring Georgia history from the Depression era through the twenty-first century.

The Annie Belle Weaver Special Collections provides the history of the university and the geographic area it serves. Photographs, family histories, and other materials associated with the west Georgia region are included in Special Collections, as are materials on sacred harp music and American psalmody.



## Library Acquisitions and Services Fiscal Years 2004 – 2013

<b>Holdings</b>	<b>2004</b>	<b>2005</b>	<b>2006</b>	<b>2007</b>	<b>2008</b>
Volumes added during the year	9,681	7,543	12,704	8,667	5,524
Year-end Volumes	391,330	397,169	404,580	413,782	423,903
Year-end Microfilm Reels	22,773	24,447	24,554	24,544	24,544
Other microtext (Physical Units) at year-end	1,132,936	1,143,479	1,142,429	1,098,523	1,143,479
Year-end Periodical Titles Received	1,194	1,101	1,228	1,228	1,247
Electronic Periodical Titles	-	-	-	21,000	27,142
<b>Documents</b>					
U.S. Documents	201,779	201,779	202,339	212,545	204,774
U.S. Documents (Volumes on Microfiche)*	75,198	65,854	58,655	59,655	31,734
<b>Collection</b>					
Supplies and Books Expenditures	\$ 554,758	\$ 699,840	\$ 683,620	\$ 269,618	\$ 497,447
Periodicals Expenditures	\$ 331,843	\$ 534,350	\$ 371,710	\$ 464,806	\$ 458,844
Audio Visual Expenditures	\$ 5,482	\$ 10,953	\$ 19,668	\$ 8,200	\$ 19,378
<b>Circulation**</b>	48,524	46,401	45,667	55,187	51,631
<b>Interlibrary Loans</b>					
Borrowed	3,097	5,538	3,045	2,270	2,347
Loaned	5,239	8,106	4,968	4,696	4,891
Full text retrievals from electronic databases	235,622	319,747	343,268	***	702,377
<b>LIBR 1101 Credit Hours</b>	807	604	492	442	496
<b>Reference Questions ***</b>	23,504	13,200	13,200	9,850	10,750

<b>Holdings</b>	<b>2009</b>	<b>2010</b>	<b>2011</b>	<b>2012</b>	<b>2013</b>
Volumes added during the year	12,567	6,063	2,375	3,253	2,928
Year-end Volumes	406,989	433,661	436,036	456,034	435,334
Year-end Microfilm Reels	22,046	24,554	22,217	21,052	21,052
Other microtext (Physical Units) at year-end	1,118,882	1,092,995	1,051,048	150,457	176,565
Year-end Periodical Titles Received	932	823	766	897	628
Electronic Periodical Titles	30,040	51,672	71,239	76,037	87,845
<b>Documents</b>					
U.S. Documents	198,883	182,966	174,531	64,890*	66,207
U.S. Documents (Volumes on Microfiche)*	46,708	30,204	30,204	20,053	5,223
<b>Collection</b>					
Supplies and Books Expenditures	\$ 378,757	\$ 576,345	\$ 506,800	\$ 413,833	\$ 458,444
Periodicals Expenditures	\$ 412,439	\$ 456,458	\$ 485,844	\$ 300,809	\$ 168,253
Audio Visual Expenditures	\$ 5,207	\$ 6,104	\$ 1,708	\$ 2,856	\$ 4,265
<b>Circulation**</b>	60,924	49,142	33,872	37,301	38,078
<b>Interlibrary Loans</b>					
Borrowed	1,858	1,753	1,640	2,075	2,679
Loaned	5,316	4,600	4,591	4,313	5,992
Full text retrievals from electronic databases	370,939	405,267	425,530	451,062	348,454
<b>LIBR 1101 Credit Hours</b>	484	610	1,134	1,216	1,382
<b>Reference Questions ***</b>	10,641	8,816	10,407	11,196	6,257

\*Decline due to electronic resources

\*\*Vendor Statistics incomplete as of the reporting date

\*\*\*Statistical Change for Reference Questions

Source: Irvine Sullivan Ingram Library





## Employee Information





## Institution Total Fall 2013 Faculty Profile

	Teaching Faculty		Administrators			Total	Percent
	Full time	Part time	General <sup>1</sup>	Academic <sup>2</sup>	Librarians		
<b>Rank</b>							
Professor	67	6	3	41	2	119	19.0%
Associate Professor	91		1	16	1	109	18.0%
Assistant Professor	138	5		7	11	161	26.0%
Instructor	58	119		3	2	182	29.0%
Lecturer	49			2		51	8.0%
<b>College/Department</b>							
College of Arts and Humanities	113	29		15		157	25.0%
College of Education	76	51	2	13		142	23.0%
College of Science and Mathematics	81	15		10		106	17.0%
College of Social Sciences	65	18	1	10		94	15.0%
Richards College of Business	46	5	1	11		63	10.0%
School of Nursing	22	11		8		41	7.0%
Library		1		2	16	19	3.0%
<b>Highest Degree Earned</b>							
Doctorate	287	32	4	60		383	62.0%
Masters or EDS	114	92		9	16	231	37.0%
Professional Bachelor	2	6				8	1.0%
<b>Tenure Status</b>							
Tenured	152		4	56	2	214	34.0%
Tenure track	117			6	12	135	22.0%
Non-Tenure track	134	130		7	2	273	44.0%
<b>Ethnicity</b>							
Black or African American	28	11		4		43	6.9%
American Indian or Alaskan Native	2			1		3	0.5%
Asian	42	1		3		46	7.4%
Native Hawaiian or Pacific Islander						0	0.0%
Hispanic	11			1		12	1.9%
Two or More Races	1					1	0.2%
Caucasian/White	319	117	4	60	15	515	82.8%
Unknown/Not Reported		1			1	2	0.3%
<b>Gender</b>							
Female	228	92	2	33	13	368	59.0%
Male	175	38	2	36	3	254	41.0%
<b>Total Faculty</b>	<b>403</b>	<b>130</b>	<b>4</b>	<b>69</b>	<b>16</b>	<b>622</b>	<b>100.0%</b>

<sup>1</sup>General Administrators include the Provost and Vice President for Academic Affairs, Deputy Provost, Associate Vice President for Academic Affairs, and Interim Director of Institutional Research and Planning.

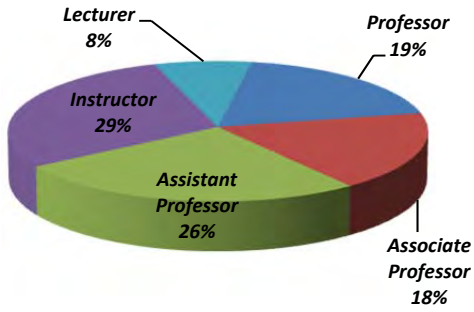
<sup>2</sup>Academic Administrators include Deans, Associate Deans, Department Chairs, and Academic Directors.

**Note:** Graduate Teaching Assistants and staff who teach courses are not included.

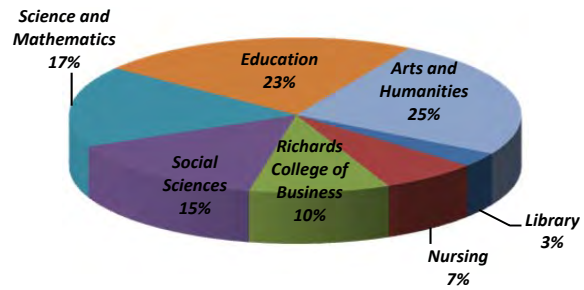
Source: Academic Affairs



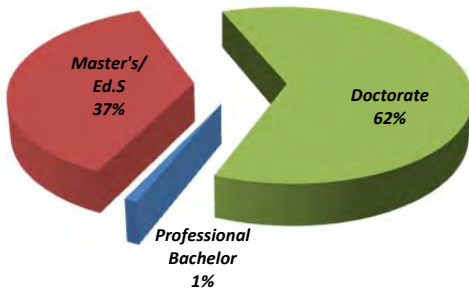
**Rank**



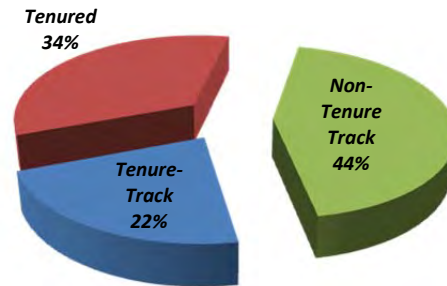
**College/Department**



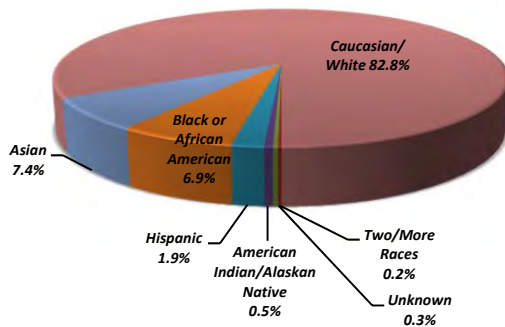
**Highest Degree Earned**



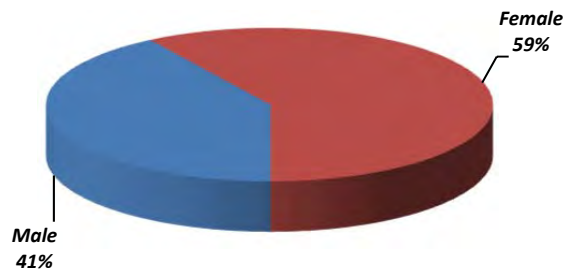
**Tenure**



**Ethnicity**



**Gender**





## College of Arts and Humanities Fall 2013 Faculty Profile

	Teaching Faculty		Administrators	Total	Percent
	Full time	Part time	Academic <sup>1</sup>		
<b>Rank</b>					
Professor	15		9	24	15.0%
Associate Professor	25		3	28	18.0%
Assistant Professor	33	1	1	35	22.0%
Instructor	28	28		56	36.0%
Lecturer	12		2	14	9.0%
<b>Highest Degree Earned</b>					
Doctorate	61	5	12	78	50.0%
Masters or EDS	51	23	3	77	49.0%
Professional Bachelor	1	1		2	1.0%
<b>Tenure Status</b>					
Tenured	40		12	52	33.0%
Tenure track	29		1	30	19.1%
Non-Tenure track	44	29	2	75	48.0%
<b>Ethnicity</b>					
Black or African American	3	1		4	2.6%
American Indian or Alaskan Native	1			1	0.6%
Asian	2			2	1.3%
Native Hawaiian or Pacific Islander				0	0.0%
Hispanic	3			3	1.9%
Two or More Races				0	0.0%
Caucasian/White	104	27	15	146	93.0%
Unknown/Not Reported		1		1	0.6%
<b>Gender</b>					
Female	70	17	6	93	59.0%
Male	43	12	9	64	41.0%
<b>Total Faculty</b>	<b>113</b>	<b>29</b>	<b>15</b>	<b>157</b>	<b>100.0%</b>

<sup>1</sup>Academic Administrators include Deans, Associate Deans, Department Chairs, and Academic Directors.

Source: Academic Affairs



## College of Education Fall 2013 Faculty Profile

	Teaching Faculty		Administrators		Total	Percent
	Full time	Part time	General <sup>1</sup>	Academic <sup>2</sup>		
<b>Rank</b>						
Professor	10	2	1	4	17	12.0%
Associate Professor	18		1	5	24	16.9%
Assistant Professor	29	4		2	35	24.6%
Instructor	12	45		2	59	41.6%
Lecturer	7				7	4.9%
<b>Highest Degree Earned</b>						
Doctorate	61	17	2	12	92	64.8%
Masters or EDS	15	32		1	48	33.8%
Professional Bachelor		2			2	1.4%
<b>Tenure Status</b>						
Tenured	28		2	8	38	26.8%
Tenure track	26			3	29	20.4%
Non-Tenure track	22	51		2	75	52.8%
<b>Ethnicity</b>						
Black or African American	9	4			13	9.2%
American Indian or Alaskan Native	1			1	2	1.4%
Asian	6	1			7	4.9%
Native Hawaiian or Pacific Islander					0	0.0%
Hispanic	2				2	1.4%
Two or More Races					0	0.0%
Caucasian/White	58	46	2	12	118	83.1%
<b>Gender</b>						
Female	56	46	1	8	111	78.2%
Male	20	5	1	5	31	21.8%
<b>Total Faculty</b>	<b>76</b>	<b>51</b>	<b>2</b>	<b>13</b>	<b>142</b>	<b>100.0%</b>

<sup>1</sup>General Administrators include the Associate Vice President for Academic Affairs.

<sup>2</sup>Academic Administrators include Deans, Associate Deans, Department Chairs, and Academic Directors.

Source: Academic Affairs



## College of Science and Mathematics Fall 2013 Faculty Profile

		Teaching Faculty		Administrators	Total	Percent
		Full time	Part time	Academic <sup>1</sup>		
<b>Rank</b>						
	Professor	13	3	9	25	24.0%
	Associate Professor	27		1	28	26.0%
	Assistant Professor	24			24	23.0%
	Instructor	8	12		20	19.0%
	Lecturer	9			9	8.0%
<b>Highest Degree Earned</b>						
	Doctorate	70	4	10	84	79.0%
	Masters or EDS	11	11		22	21.0%
	Professional Bachelor				0	0.0%
<b>Tenure Status</b>						
	Tenured	40		10	50	47.0%
	Tenure track	21			21	20.0%
	Non-Tenure Track	20	15		35	33.0%
<b>Ethnicity</b>						
	Black or African American	2		1	3	3.0%
	American Indian or Alaskan Native				0	0.0%
	Asian	20		2	22	21.0%
	Native Hawaiian or Pacific Islander				0	0.0%
	Hispanic	1			1	1.0%
	Two or More Races				0	0.0%
	Caucasian/White	58	15	7	80	75.0%
<b>Gender</b>						
	Female	34	6	10	50	47.0%
	Male	47	9		56	53.0%
	<b>Total Faculty</b>	<b>81</b>	<b>15</b>	<b>10</b>	<b>106</b>	<b>100.0%</b>

<sup>1</sup> Academic Administrators include Deans, Associate Deans, Department Chairs, and Academic Directors.

Source: Academic Affairs



## College of Social Sciences Fall 2013 Faculty Profile

	Teaching Faculty		Administrators		Total	Percent
	Full time	Part time	General <sup>1</sup>	Academic <sup>2</sup>		
<b>Rank</b>						
Professor	13		1	6	20	21.3%
Associate Professor	10			4	14	14.9%
Assistant Professor	27				27	28.7%
Instructor	9	18			27	28.7%
Lecturer	6				6	6.4%
<b>Highest Degree Earned</b>						
Doctorate	54	3	1	10	68	72.3%
Masters or EDS	11	14			25	26.6%
Professional Bachelor		1			1	1.1%
<b>Tenure Status</b>						
Tenured	23		1	10	34	36.2%
Tenure track	23				23	24.4%
Non-Tenure track	19	18			37	39.4%
<b>Ethnicity</b>						
Black or African American	9	2		2	13	13.8%
American Indian or Alaskan Native					0	0.0%
Asian	3				3	3.2%
Native Hawaiian or Pacific Islander					0	0.0%
Hispanic	2				2	2.1%
Two or More Races					0	0.0%
Caucasian/White	51	16	1	8	76	80.9%
<b>Gender</b>						
Female	27	9	1	5	42	44.7%
Male	38	9		5	52	55.3%
<b>Total Faculty</b>	<b>65</b>	<b>18</b>	<b>1</b>	<b>10</b>	<b>94</b>	<b>100.0%</b>

<sup>1</sup>General Administrators include the Interim Provost and Vice President for Academic Affairs.

<sup>2</sup>Academic Administrators include Deans, Associate Deans, Department Chairs, and Academic Directors.

Source: Academic Affairs



## Richards College of Business Fall 2013 Faculty Profile

		Teaching Faculty		Administrators		Total	Percent
		Full time	Part time	General <sup>1</sup>	Academic <sup>2</sup>		
<b>Rank</b>							
	Professor	13	1	1	7	22	35.0%
	Associate Professor	10			3	13	20.6%
	Assistant Professor	8				8	12.7%
	Instructor	1	4		1	6	9.5%
	Lecturer	14				14	22.2%
<b>Highest Degree Earned</b>							
	Doctorate	33	1	1	10	45	71.4%
	Masters or EDS	13	4		1	18	28.6%
	Professional Bachelor					0	0.0%
<b>Tenure Status</b>							
	Tenured	20		1	10	31	49.2%
	Tenure track	11				11	17.5%
	Non-Tenure track	15	5		1	21	33.3%
<b>Ethnicity</b>							
	Black or African American	3				3	4.8%
	American Indian or Alaskan Native					0	0.0%
	Asian	10			1	11	17.5%
	Native Hawaiian or Pacific Islander					0	0.0%
	Hispanic	3			1	4	6.3%
	Two or More Races					0	0.0%
	Caucasian/White	30	5	1	9	45	71.4%
<b>Gender</b>							
	Female	20	3		5	28	44.4%
	Male	26	2	1	6	35	55.6%
<b>Total Faculty</b>		<b>46</b>	<b>5</b>	<b>1</b>	<b>11</b>	<b>63</b>	<b>100.0%</b>

<sup>1</sup>General Administrators include the Deputy Provost for Academic Affairs.

<sup>2</sup>Academic Administrators include Deans, Associate Deans, Department Chairs, and Academic Directors.

Source: Academic Affairs



**Tanner Health System  
School of Nursing  
Fall 2013 Faculty Profile**

	Teaching Faculty		Administrators	Total	Percent
	Full time	Part time	Academic <sup>1</sup>		
<b>Rank</b>					
Professor	3		4	7	17.1%
Associate Professor	1			1	2.4%
Assistant Professor	17		4	21	51.3%
Instructor		11		11	26.8%
Lecturer	1			1	2.4%
<b>Highest Degree Earned</b>					
Doctorate	8	2	6	16	39.0%
Masters or EDS	13	7	2	22	53.7%
Professional Bachelor	1	2		3	7.3%
<b>Tenure Status</b>					
Tenured	1		4	5	12.2%
Tenure track	7		2	9	21.9%
Non-Tenure track	14	11	2	27	65.9%
<b>Ethnicity</b>					
Black or African American	2	4	1	7	17.1%
American Indian or Alaskan Native				0	0.0%
Asian	1			1	2.4%
Native Hawaiian/Pacific Islander				0	0.0%
Hispanic	1			1	2.4%
Two or More Races				0	0.0%
Caucasian/White	18	7	7	32	78.1%
<b>Gender</b>					
Female	21	11	8	40	97.6%
Male	1			1	2.4%
<b>Total Faculty</b>	<b>22</b>	<b>11</b>	<b>8</b>	<b>41</b>	<b>100.0%</b>

<sup>1</sup>Academic Administrators include Deans, Associate Deans, Department Chairs, and Academic Directors.

Source: Academic Affairs



## Ingram Library Fall 2013 Faculty Profile

	Teaching Faculty		Administrators	Librarians	Total	Percent
	Full time	Part time	Academic <sup>1</sup>			
<b>Rank</b>						
Professor			1	2	3	16.0%
Associate Professor			1	1	2	11.0%
Assistant Professor				11	11	58.0%
Instructor		1		2	3	16.0%
Lecturer					0	0.0%
						5
<b>Highest Degree Earned</b>						
Doctorate			1		1	5.0%
Masters or EDS		1	1	16	18	95.0%
Professional Bachelor					0	0.0%
<b>Tenure Status</b>						
Tenured			2	2	4	21.0%
Tenure track				12	12	63.0%
Non-Tenure track		1		2	3	16.0%
<b>Ethnicity</b>						
Black or African American					0	0.0%
American Indian or Alaskan Native					0	0.0%
Asian					0	0.0%
Native Hawaiian or Pacific Islander					0	0.0%
Hispanic					0	0.0%
Two or More Races					0	0.0%
Caucasian/White		1	2	15	18	95.0%
Unknown/Not Reported				1	1	5.0%
<b>Gender</b>						
Female			1	13	14	74.0%
Male		1	1	3	5	26.0%
<b>Total</b>	<b>0</b>	<b>1</b>	<b>2</b>	<b>16</b>	<b>19</b>	<b>100.0%</b>

<sup>1</sup>Academic Administrators include Deans, Associate Deans, Department Chairs, and Academic Directors.

Source: *Academic Affairs*



## Average Salary by Employee Category Fiscal Years 2007-2014

Faculty	FY 2007		FY 2008		FY 2009		FY 2010	
	Number	Average	Number	Average	Number	Average	Number	Average
Professor	60	73,374	65	77,201	59	76,830	62	81,923
Associate Professor	82	57,552	82	58,814	86	59,871	94	60,656
Assistant Professor	134	52,320	148	51,659	145	52,511	157	51,791
Instructor	78	35,452	64	37,424	76	38,137	73	38,543
Lecturer	24	44,758	26	44,598	30	44,288	30	44,381
<b>All Faculty</b>	<b>378</b>	<b>\$52,691</b>	<b>385</b>	<b>\$53,939</b>	<b>396</b>	<b>\$54,327</b>	<b>416</b>	<b>\$55,459</b>

Staff								
Administrative	331	48,861	248	47,512	315	49,139	320	47,636
Clerical	135	23,489	190	26,254	187	26,633	187	26,994
Maintenance	119	23,131	154	26,215	149	26,795	155	27,865
<b>All Staff</b>	<b>585</b>	<b>\$31,827</b>	<b>592</b>	<b>\$35,128</b>	<b>651</b>	<b>\$37,560</b>	<b>662</b>	<b>\$37,560</b>

Faculty	FY 2011		FY 2012		FY 2013		FY 2014	
	Number	Average	Number	Average	Number	Average	Number	Average
Professor	99	86,019	107	87,236	104	87,753	112	89,157
Associate Professor	98	63,389	101	63,327	107	61,661	110	64,796
Assistant Professor	144	51,961	141	53,550	146	53,098	156	53,897
Instructor	68	38,318	67	37,858	74	38,247	63	38,961
Lecturer	39	42,749	40	43,543	47	44,724	51	46,420
<b>All Faculty</b>	<b>448</b>	<b>\$56,487</b>	<b>456</b>	<b>\$57,103</b>	<b>478</b>	<b>\$57,097</b>	<b>492</b>	<b>\$61,512</b>

Staff								
Administrative	316	57,061	383	54,032	410	53,137	416	51,635
Clerical	173	28,460	210	28,367	214	29,204	210	30,091
Maintenance	125	26,958	143	26,365	155	25,225	170	27,146
<b>All Staff</b>	<b>614</b>	<b>\$42,966</b>	<b>736</b>	<b>\$41,334</b>	<b>779</b>	<b>\$41,009</b>	<b>796</b>	<b>\$40,721</b>

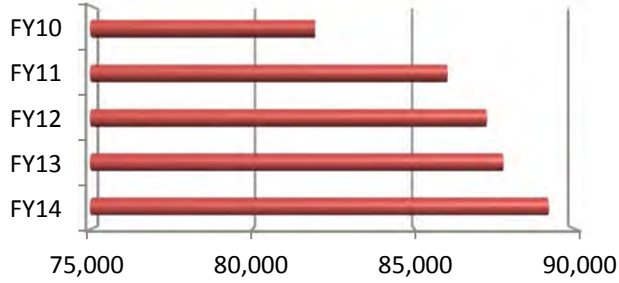
**Note:** Faculty totals include all full-time teaching faculty, librarians, and other (f-t) faculty with temporary appointment.

Sources: Academic Affairs and Human Resources

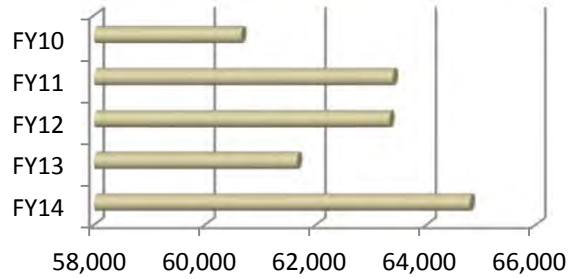


## Faculty Salary Fiscal Years 2010 - 2014

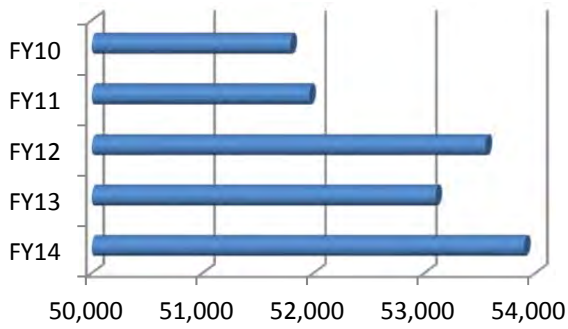
### Professor



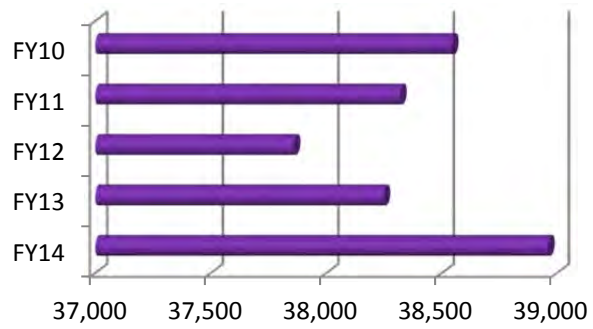
### Associate Professor



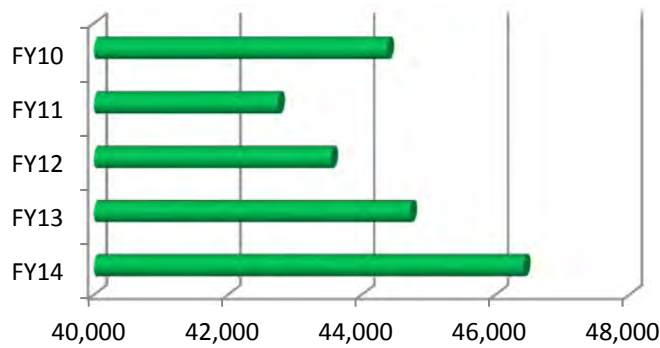
### Assistant Professor



### Instructor



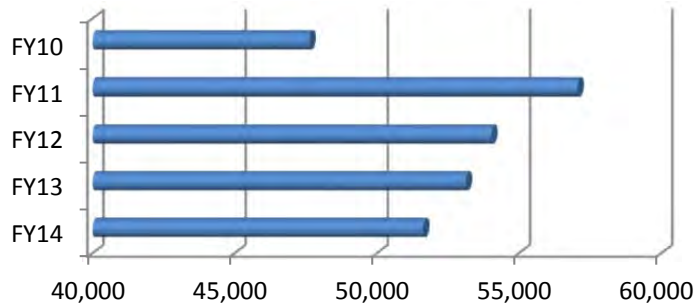
### Lecturer



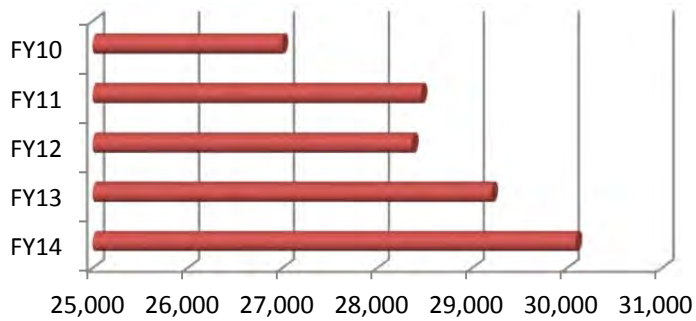


## Staff Salary Fiscal Years 2010 - 2014

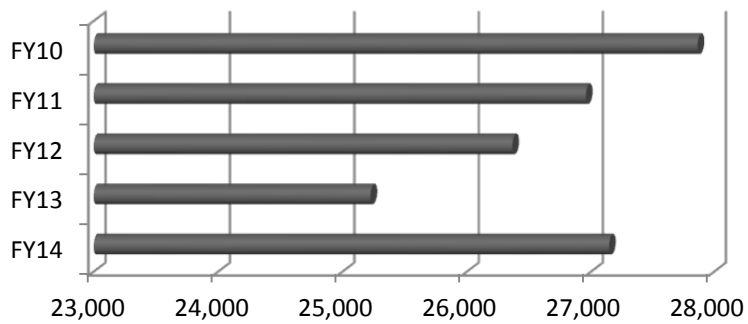
### Administrative



### Clerical



### Maintenance



Source: Academic Affairs and Human Resources





## Financial Information





## UWG Operating Expenses

	July 1, 2013	June 30, 2013
Operating Expenses	Budgeted	Actual
Salaries:		
Faculty	\$ 36,077,737	\$34,697,821
Staff	32,996,596	34,368,891
Benefits	24,247,293	21,527,433
Other Personal Services	5,958,986	371,368
Travel	1,388,840	1,379,644
Scholarships and Fellowships	12,381,689	10,820,701
Utilities	2,045,676	3,427,681
Supplies and Other Services	54,440,413	38,196,190
Depreciation/Equipment	11,097,770	12,279,581
Unallocated	1,264,275	-
Total Operating Expenses	181,899,275	157,069,310
Non-Operating Expenses		
Interest Expense (Capital Assets)	-	7,288,660
<b>Total Expenses</b>	<b>\$ 181,899,275</b>	<b>\$ 164,357,970</b>

EXPENSES BY CLASSIFICATION		
	July 1, 2013	June 30, 2013
Operating Expenses	Budgeted	Actual
Instruction	\$ 58,358,546	\$56,104,999
College of Arts & Humanities	7,790,526	9,030,663
College of Science & Mathematics	7,897,135	8,663,964
College of Social Sciences	5,566,408	6,188,267
Richards College of Business	5,827,594	6,945,967
College of Education	6,893,814	8,066,697
School of Nursing	3,440,181	3,507,171
Other Instruction	20,942,888	13,702,270
Research	897,463	1,740,696
Public Service	248,004	312,193
Academic Support	16,131,154	16,947,665
Student Services (Excl Fund 13000)	8,899,272	7,869,129
Student Activities (Fund 13000)	3,744,691	2,891,343
Intramural	-	52,181
Social & Entertainment Activities	-	1,021,615
Student Government	-	39,997
Student Publications	-	58,305
Scholarships, Study Abroad	134,024	131,411
Other Programs/Unassigned <sup>1</sup>	3,610,667	1,587,834
Institutional Support	19,542,894	14,063,119
Plant Operations and Maintenance	9,697,720	14,284,071
Safety and Security	1,711,315	1,831,466
Scholarships and Fellowships	21,768,421	9,334,021
Auxiliary Enterprises	40,869,103	31,690,608
Student Housing	16,415,918	11,661,200
Food Services	8,294,688	6,662,474
Stores and Shops	5,454,676	4,997,660
Intercollegiate Athletics	4,768,224	3,110,947
Scholarships, Athletic	1,206,500	1,305,953
Other Service Units	4,729,097	3,952,374
Unallocated Expenses	30,692	
Total Operating Expenses	181,899,275	157,069,310
Non-Operating Expenses		
Interest Expense (Capital Assets)	-	7,288,660
<b>Total Expenses</b>	<b>\$ 181,899,275</b>	<b>\$ 164,357,970</b>

- Includes all fund groups: resident instruction, auxiliary, student activities, continuing education, indirect
- Salaries for Graduate Assistants are included in Staff Salaries

Source: Budget Services and Office of the Controller



## UWG Operating Expenses Continued

<i>June 30, 2012</i>	
<b>Operating Expenses</b>	<b>Actual</b>
Salaries:	
Faculty	\$ 33,016,529
Staff	32,172,417
Benefits	19,519,045
Other Personal Services	377,627
Travel	1,294,682
Scholarships and Fellowships	11,136,039
Utilities	4,112,198
Supplies and Other Services	36,682,393
Depreciation/Equipment	10,185,764
Unallocated	-
Total Operating Expenses	148,496,694
Non-Operating Expenses	
Interest Expense (Capital Assets)	6,026,139
<b>Total Expenses</b>	<b>\$ 154,522,833</b>

<b>EXPENSES BY CLASSIFICATION</b>	
<i>June 30, 2012</i>	
<b>Operating Expenses</b>	<b>Actual</b>
Instruction	\$ 52,678,753
College of Arts & Humanities	8,979,626
College of Science & Mathematics	8,428,267
College of Social Sciences	5,586,145
Richards College of Business	5,906,791
College of Education	6,937,352
School of Nursing	2,696,358
Other Instruction	14,144,214
Research	1,624,407
Public Service	290,376
Academic Support	17,080,448
Student Services (Excl Fund 13000)	7,742,184
Student Activities (Fund 13000)	3,212,082
Intramural	8,985
Social & Entertainment Activities	1,197,389
Student Government	44,245
Student Publications	78,009
Scholarships, Study Abroad	127,606
Other Programs/Unassigned <sup>1</sup>	1,883,454
Institutional Support	13,104,091
Plant Operations and Maintenance	11,966,236
Safety and Security	1,587,011
Scholarships and Fellowships	9,655,181
Auxiliary Enterprises	29,555,925
Student Housing	10,165,311
Food Services	7,462,866
Stores and Shops	4,490,253
Intercollegiate Athletics	2,842,060
Scholarships, Athletic	1,273,483
Other Service Units	4,595,435
Unallocated Expenses	
Total Operating Expenses	148,496,694
Non-Operating Expenses	
Interest Expense (Capital Assets)	6,026,139
<b>Total Expenses</b>	<b>\$ 154,522,833</b>



## University Revenue by Source

	<i>July 1, 2013</i> <i>Budgeted</i>	<i>June 30, 2013</i> <i>Actual</i>	<i>June 30, 2012</i> <i>Actual</i>
<b>Operating Revenue</b>			
Tuition and Fees	\$ 68,856,148	\$ 71,875,500	\$ 69,305,908
Less: Scholarship allowances	\$ (12,381,689)	\$ (16,003,530)	\$ (17,574,133)
Grants and Contracts			
Federal	\$ -	\$ 1,292,024	\$ 1,686,821
State	\$ -	\$ 325,618	\$ 401,507
Other	\$ -	\$ 1,655,128	\$ 1,519,309
Sales and Services	\$ 4,280,682	\$ 646,117	\$ 512,140
Rents and Royalties	\$ -	\$ 28,446	\$ 30,959
Auxiliary			
Residence Halls	\$ 16,415,918	\$ 14,143,114	\$ 13,302,342
Bookstore	\$ 5,454,676	\$ 4,211,880	\$ 4,346,758
Food Services	\$ 8,294,688	\$ 7,246,956	\$ 7,179,168
Parking/Transportation	\$ 1,491,040	\$ 1,432,370	\$ 1,583,433
Health Services	\$ 2,284,833	\$ 2,268,183	\$ 2,412,697
Intercollegiate Athletics	\$ 5,974,724	\$ 5,508,354	\$ 5,754,519
Other Organizations	\$ 953,224	\$ 522,049	\$ 490,173
Other	\$ -	\$ 3,335,930	\$ 4,009,074
<b>Total Operating Revenue</b>	<b><u>\$ 101,624,244</u></b>	<b><u>\$ 98,488,139</u></b>	<b><u>\$ 94,960,675</u></b>
<b>Non-Operating Revenue</b>			
State Appropriations	\$ 44,301,877	\$ 42,936,722	\$ 38,030,957
Federal Stimulus - Stabilization Fu	\$ -	\$ -	\$ -
Grants and Contracts	\$ 23,091,465	\$ 21,251,807	\$ 22,032,594
Gifts	\$ -	\$ 503,031	\$ 921,705
Investment Income	\$ 500,000	\$ 268,502	\$ 277,667
Other	\$ -	\$ (774,741)	\$ 267,388
<b>Total Nonoperating Revenue</b>	<b><u>\$ 67,893,342</u></b>	<b><u>\$ 64,185,321</u></b>	<b><u>\$ 61,530,311</u></b>
<b>Capital Gifts and Grants</b>			
State	\$ -	\$ 17,984,983	\$ 2,459,263
Other Capital Gifts and Grants	\$ -	\$ -	\$ -
<b>Total Capital Gifts and Grants</b>	<b><u>\$ -</u></b>	<b><u>\$ 17,984,983</u></b>	<b><u>\$ 2,459,263</u></b>
<b>Total Revenues</b>	<b><u>\$ 169,517,586</u></b>	<b><u>\$ 180,658,443</u></b>	<b><u>\$ 158,950,249</u></b>

- Includes all funding sources, internal revenue, special initiative, departmental sales and service, and sponsored operations.

- Grants and contracts does not include federal tuition scholarships.



## Total Resident Instruction Expenditures Per Full-time Equivalent Student Fiscal Years 2010-2014

<i>Fiscal Year</i>	<i>Resident Instruction Expenditures*</i>	<i>Fall Term FTE Enrollment**</i>	<i>Total Expenditures per FTE Student</i>
2010	\$96,732,567	10,309	\$9,384
2011	\$117,649,114	10,213	\$11,520
2012	\$121,754,826	10,575	\$11,514
2013	\$129,776,019	10,638	\$12,200
2014	\$137,285,481	10,845	\$12,659

- \* Calculated as Total Operating Expenses per Annual Financial Report less Auxiliary Services and Student Activities
- \*\* FTE definition set by the Board of Regents is the total full-time undergraduate students taking 12 or more hours plus the total full-time graduate students taking 9 or more hours plus the total part-time undergraduate credit hours /12 plus the total part-time graduate credit hours/9.

## Student Dollar Distribution Fall 2013

- |                                    |      |
|------------------------------------|------|
| 1. Tuition                         | 0.72 |
| 2. Special Institutional Fee       | 0.09 |
| 3. Facility Fee - Athletic Complex | 0.02 |
| 4. Facility Fee - Campus Center    | 0.03 |
| 5. Athletic Fee                    | 0.05 |
| 6. Health Fee                      | 0.03 |
| 7. Student Activity Fee            | 0.02 |
| 8. Parking & Transportation Fee    | 0.02 |
| 9. Technology Fee                  | 0.02 |





## Condensed Statement of Net Assets Fiscal Years 2012-2013

	2013	2012
<b>Assets:</b>		
Current Assets	\$ 55,857,444	\$51,102,796
Capital Assets, net	258,736,231	218,741,747
Other Assets	2,690,529	2,525,797
<b>Total Assets</b>	<b>317,284,204</b>	<b>272,370,340</b>
<b>Liabilities:</b>		
Current Liabilities	14,566,551	14,775,926
Noncurrent Liabilities	142,317,072	116,171,687
<b>Total Liabilities</b>	<b>156,883,623</b>	<b>130,947,613</b>
<b>Net Assets:</b>		
Invested in Capital Assets, net of Restricted - nonexpendable	115,179,013	103,859,942
Restricted - expendable	2,851,979	2,660,009
Capital Projects		
Unrestricted	42,369,589	33,257,037
<b>Total Net Assets</b>	<b>\$ 160,400,581</b>	<b>\$ 139,776,988</b>

**Assets** are cash, investments, receivables, prepaid items, inventories, capital equipment, etc.

**Liabilities** are accounts payable, deposits from others to the University (i.e. deposits for room rentals, breakage, etc.), and payroll deductions.

*Source: Budget Services and Office of the Controller*



## Undergraduate Student Financial Aid Fiscal Years 2010 - 2013

The Office of Financial Aid coordinates financial assistance for nearly seventy-three percent of West Georgia's students. Its staff determines eligibility for aid awarded and records aid received from other sources, such as the West Georgia Foundation, corporations, and individuals. The Office coordinates and reports awards to the University System Board of Regents and the University.

Undergraduate	2010		2011		2012		2013	
	No. of Awards*	Amount	No. of Awards*	Amount	No. of Awards*	Amount	No. of Awards*	Amount
<b>Loans</b>								
Perkins	327	315,249	201	242,603	82	148,665	68	114,025
Ford Direct Stafford	4,428	32,133,794	4,849	35,709,111	6,993	48,591,459	7,188	49,270,261
PLUS	328	2,961,893	393	3,323,700	718	4,394,447	809	6,658,311
UWG Emergency	400	262,197	455	299,663	446	245,679	335	187,061
Private	175	1,183,849	170	1,307,468	256	1,745,205	266	1,840,895
HOPE Promise <sup>1</sup>	3	1,130	0	0	0	0	0	0
Service Cancelable <sup>1</sup>	0	0	0	0	0	0	0	0
<b>Total</b>	<b>5,661</b>	<b>36,858,112</b>	<b>6,068</b>	<b>40,882,545</b>	<b>8,495</b>	<b>55,125,455</b>	<b>8,666</b>	<b>58,070,553</b>
<b>Scholarships</b>								
Institutional	437	1,614,893	439	1,576,803	646	1,817,231	676	1,860,612
Private	252	736,963	283	660,832	490	669,883	539	778,453
State	12	40,616	11	28,732	19	26,500	16	40,500
<b>Total</b>	<b>701</b>	<b>2,392,472</b>	<b>733</b>	<b>2,266,367</b>	<b>1,155</b>	<b>2,513,614</b>	<b>1,231</b>	<b>2,679,565</b>
<b>Grants</b>								
Hope	2,331	14,614,345	2,341	16,136,906	3,302	11,473,125	3,481	11,516,228
Pell	2,891	15,846,773	3,761	21,011,951	5,197	21,418,421	5,249	20,811,558
SEOG	319	241,093	271	192,350	303	222,165	272	191,364
Vocational Rehabilitation <sup>2</sup>	146	388,701	122	379,001	0	0	0	0
LEAP	38	35,217	33	31,297	0	0	0	0
ACG	209	726,538	254	868,676	0	0	0	0
SMART	70	228,922	110	316,447	0	0	0	0
<b>Total</b>	<b>6,004</b>	<b>32,081,589</b>	<b>6,892</b>	<b>38,936,628</b>	<b>8,802</b>	<b>33,113,711</b>	<b>9,002</b>	<b>32,519,150</b>
<b>Federal Programs</b>								
College Work Study	231	381,080	198	309,169	220	330,378	210	291,797
Americorps	2	7,507	2	10,276	2	3,675	3	7,820
<b>Total</b>	<b>233</b>	<b>388,587</b>	<b>200</b>	<b>319,445</b>	<b>222</b>	<b>334,053</b>	<b>213</b>	<b>299,617</b>
<b>Grand Total</b>	<b>12,599</b>	<b>71,720,760</b>	<b>13,893</b>	<b>82,404,985</b>	<b>18,674</b>	<b>91,086,833</b>	<b>19,112</b>	<b>93,568,885</b>

\* Number of awards may represent duplicated headcount because some students received more than one type of financial aid.

<sup>1</sup> Previous years HOPE Promise and Service Cancellable were included in Stafford Loans.

<sup>2</sup> The Bursar's Office can no longer track these students because they receive checks directly from Vocational Rehabilitation.

Note: Fiscal term (summer, fall, and spring) numbers for 2008 through 2010 were adjusted because of reporting error.

Source: Financial Aid



## Undergraduate Student Financial Aid Fiscal Years 2004 - 2013

Fiscal Year	Loans	HOPE Scholarships	Other Scholarships	Grants	Work Study	Total
2004	22,158,711	10,755,456	1,443,160	6,195,410	338,265	40,891,002
2005	24,438,516	11,368,110	1,617,131	6,184,011	357,340	43,965,108
2006	26,779,221	10,814,832	1,639,918	6,300,158	322,800	45,856,929
2007	23,523,562	10,999,142	1,869,232	7,214,380	294,769	43,901,085
2008	27,565,951	11,289,044	2,382,087	9,127,307	321,900	50,686,289
2009	34,004,268	13,944,390	2,680,174	14,219,667	158,131	65,006,630
2010	36,858,112	14,614,345	2,392,472	17,467,244	388,587	71,720,760
2011	40,882,545	16,136,906	2,266,367	22,799,722	319,445	82,404,985
2012	55,125,455	11,473,125	2,513,614	21,640,586	334,053	91,086,833
2013	58,070,553	11,516,228	2,679,565	21,002,922	299,617	93,568,885

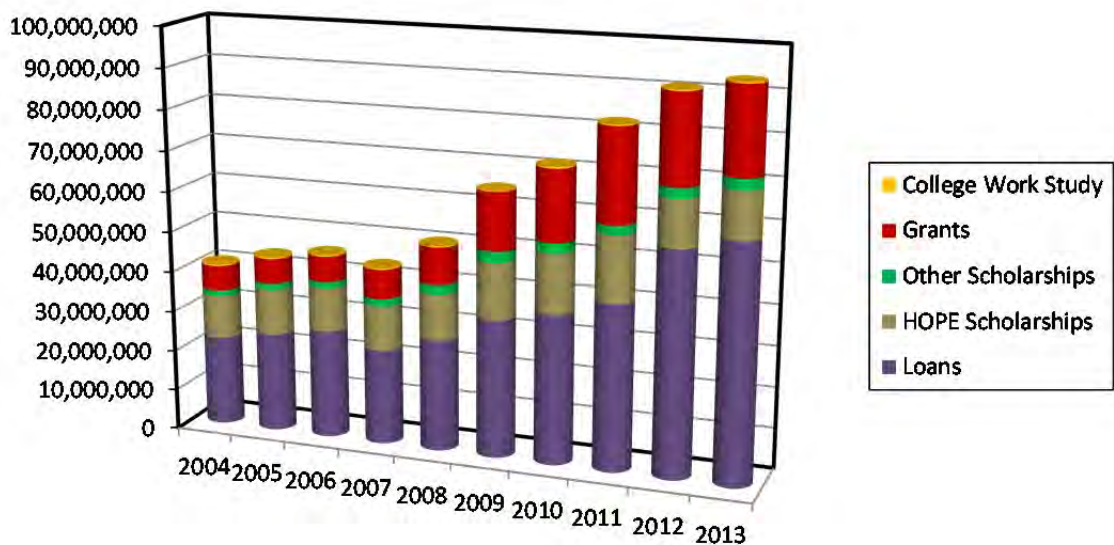
### Number of Students Served\*

Fiscal Year	Loans	HOPE Scholarships	Other Scholarships	Grants	Work Study	Total
2004	7,253	4,135	833	2,863	328	15,412
2005	6,851	4,618	876	2,443	314	15,102
2006	9,280	4,453	901	2,831	279	17,744
2007	7,670	4,453	901	2,831	279	17,744
2008	5,159	1,953	680	2,508	279	10,579
2009	5,837	2,294	760	3,256	133	12,280
2010	5,661	2,331	701	3,673	233	12,599
2011	6,068	2,341	733	4,551	200	13,893
2012	8,495	3,302	1,155	5,500	222	18,674
2013	8,666	3,481	1,231	5,521	213	19,112

\*Unduplicated headcount within categories of aid.

Note: 2010 Numbers were adjusted due to fiscal term (summer, fall, and spring) reporting error.

Source: Financial Aid





## Graduate Student Financial Aid Fiscal Years 2010 - 2013

Graduate	2010		2011		2012		2013	
	No. of Awards*	Amount	No. of Awards*	Amount	No. of Awards*	Amount	No. of Awards*	Amount
<b>Loans</b>								
Perkins	4	2,834	13	7,500	15	33,632	4	10,279
Ford Direct Stafford	869	9,827,991	839	10,251,166	1,043	14,806,446	1,363	17,185,321
GRAD PLUS	2	19,308	7	40,155	2	11,944	16	105,002
Emergency	69	43,321	63	46,550	55	35,000	73	47,550
Private	8	54,675	7	58,109	13	105,513	22	139,479
HOPE Teacher	98	124,250	0	0	0	0	0	0
<b>Loans Total</b>	<b>1,050</b>	<b>10,072,379</b>	<b>929</b>	<b>10,403,480</b>	<b>1,128</b>	<b>14,992,535</b>	<b>1,478</b>	<b>17,487,631</b>
<b>Scholarships</b>								
Institutional	20	40,102	27	5,116	24	32,366	62	92,695
Private	12	13,615	18	19,923	25	37,446	38	34,503
<b>Scholarships Total</b>	<b>32</b>	<b>53,717</b>	<b>45</b>	<b>25,039</b>	<b>49</b>	<b>69,812</b>	<b>100</b>	<b>127,198</b>
<b>Federal Programs</b>								
Work Study	3	5,624	1	951	1	1,490	3	2,982
Americorps	2	3,503	2	6,729	0	0	1	2,212
<b>Federal Total</b>	<b>5</b>	<b>9,127</b>	<b>3</b>	<b>7,680</b>	<b>1</b>	<b>1,490</b>	<b>4</b>	<b>5,194</b>
<b>Grand Total</b>	<b>1,087</b>	<b>10,135,223</b>	<b>977</b>	<b>10,436,199</b>	<b>1,178</b>	<b>15,063,837</b>	<b>1,582</b>	<b>17,620,023</b>

\* Awards may represent duplicated headcount, some students received more than one type of financial aid.

Note: 2010 Numbers were adjusted because of fiscal term (summer, fall, and spring) reporting error.

Source: Financial Aid

Fiscal Year	Loans	Scholarships	Work Study	Total
2010	10,072,379	53,717	9,127	10,135,223
2011	10,403,480	25,039	7,680	10,436,199
2012	14,992,535	69,812	1,490	15,063,837
2013	17,487,631	127,198	5,194	17,620,023

### Number of Students Served\*

Fiscal Year	Loans	Scholarships	Work Study	Total
2010	1,050	32	5	1,087
2011	929	45	3	977
2012	1,128	49	1	1,178
2013	1,478	100	4	1,582

\*Duplicated headcount within categories

Source: Financial Aid



## Research and Sponsored Projects

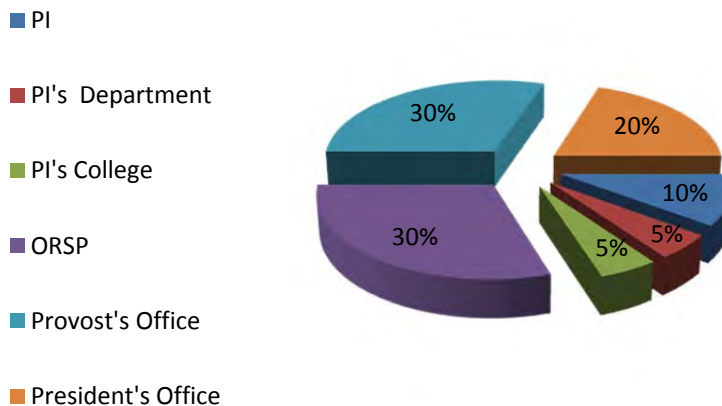
### Sponsored Projects Metrics Fiscal Years 2005 - 2013

Fiscal Year	Number of Proposals Submitted	Number of Proposals Funded	Amount Requested	Amount Awarded
2005	66	47	4,649,668	2,056,983
2006	48	38	2,681,068	1,909,258
2007	74	60	4,144,252	2,396,349
2008	74	59	4,027,924	2,097,703
2009	75	46	7,411,645	2,494,825
2010	75	53	7,152,437	2,422,145
2011	82	40	6,521,438	3,176,203
2012	63	59	10,642,057	4,053,061
2013	85	48	8,923,279	3,731,569

Source: Office of Research and Sponsored Projects

Facilities and Administrative costs (F&A)-formerly Indirect costs (IDCs), are general operating costs incurred by the University in support of sponsored research, public service, and instruction. ORSP distributes the IDCs it receives in accordance with OMB Circular A-21 ([http://www.whitehouse.gov/omb/circulars\\_a021\\_2004](http://www.whitehouse.gov/omb/circulars_a021_2004)) and according to the following schedule:

In FY 2013 the University of West Georgia was reimbursed \$187,530 in Indirect Costs incurred by sponsored grants and contracts. Of these recovered costs, a total of \$13,947 was returned to the Project Investigators (PI's) to further their individual research efforts. In addition, \$13,697 was returned to the Colleges and \$9,863 to the Departments to further research within their units.





## Faculty Research Grants Fiscal Year 2013

In addition to resources acquired from external sources, the University budgets state-allocated funds and a portion of the Indirect costs the Office receives to assist faculty research efforts through the Faculty Research Grant Program. Established in 1967, the Faculty Research Grant Program provides limited seed funding for approved faculty research projects. These funds are intended to spur research, generate preliminary data, and lead to follow-on external funding.

In fiscal year 2013, faculty members submitted formal proposals to the ORSP requesting University support for Internal Development Grants. A committee of faculty reviewers, selected by the Provost, evaluated proposals and made funding recommendations for ORSP review. The ORSP approved proposals and suggested levels of funding to the Provost. Internal funding resulted in \$9,400 (20.89%) funding student wages on the IDGs.

In compliance with these procedures, the Internal Development Grant funds awarded for Fiscal Year 2013 were as follows:

### **College of Education**

#### **Dr. Yan Yang – Educational Technology & Foundations**

Validation of Multicultural Teaching Inventory  
\$6,151.  
Resulting grant application: Spencer Foundation Major Grant Proposal  
Amount: \$156,466.

#### **Dr. Mautusi Mitra – Biology**

Employing functional genomics to study chlorophyll biosynthesis and photo-acclimation of photosynthesis in the green micro-alga *Chlamydomonas reinhardtii* - \$8,207.  
Resulting grant application: National Science Foundation CAREER Grant  
Amount: \$730,121.

### **College of Science and Mathematics**

#### **Dr. Andrew Edelman – Biology**

Response to terrestrial vertebrates to fire-based restoration of mountain longleaf pine forests  
\$7,499.  
Resulting grant application: Pending  
Amount: \$ Pending

#### **Dr. Sara Molesworth-Kenyon – Biology**

Identification of the T-cell recruiting chemokines produced during interactions between HSV-1 infected corneas and neutrophils  
\$7,500.  
Resulting grant application: National Institute of Health AREA Grant  
Amount: \$ 313,665.59

#### **Dr. Megumi Fujita – Chemistry**

From ion-pair receptor to amino-acid sensors: Toward a practical application  
\$7,447.  
Resulting grant application: Pending  
Amount: \$ Pending

### **College of School of Nursing**

#### **Dr. Ashley Helvig – Nursing**

Seizure and Behavioral Phenotyping of the Scn1a Mouse Model of Genetic Epilepsy with Febrile Seizures Plus  
\$6,500  
Resulting grant application: pending  
Amount: - Pending

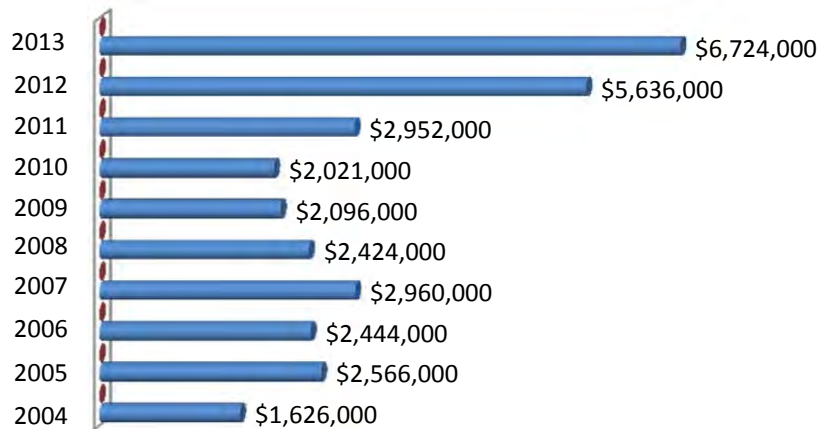
*Source: Office of Research and Sponsored Projects*



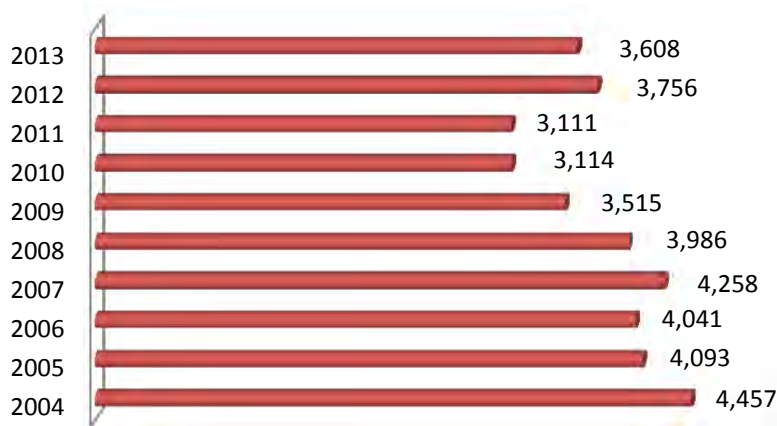
## Fund Raising December 2013

The Division of University Advancement (UA) works to secure the support and financial resources needed to create an environment for UWG students – an environment that supports the pursuit of scholarly achievement, creative expression and service to humanity.

### Dollars



### Donors



Note: Numbers are reported by calendar year (January through December) and are rounded to the nearest thousand. Beginning 2012, total includes gifts, pledges, gifts-in-kind secured, and planned gifts booked..

Source: *Development and Alumni Relations*

